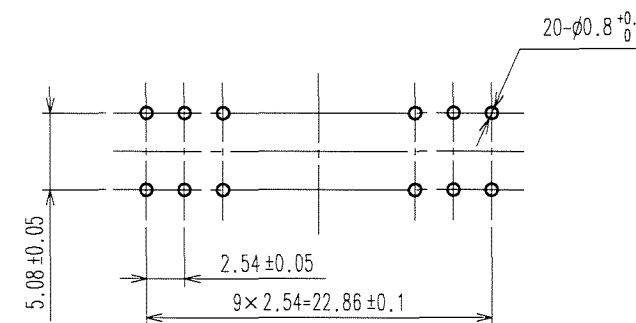
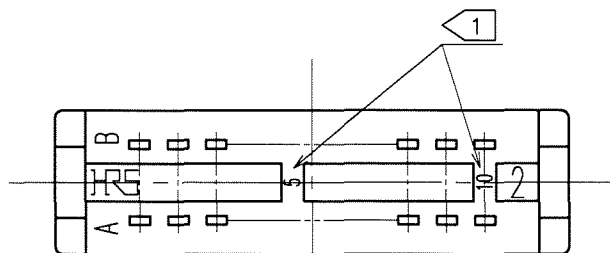
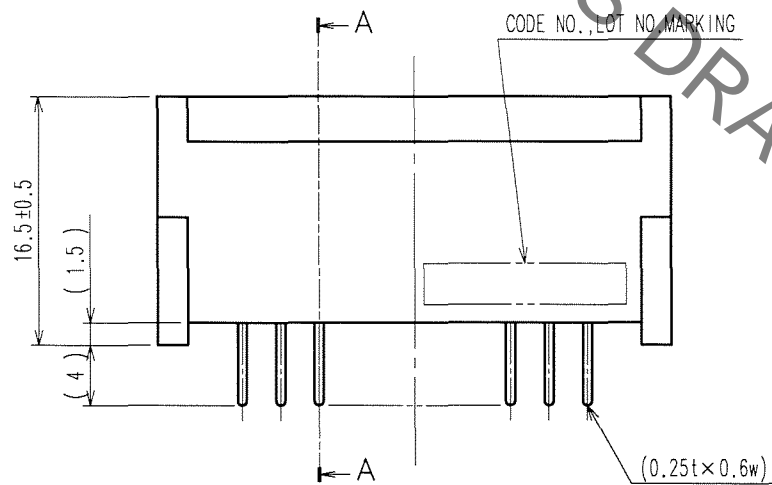
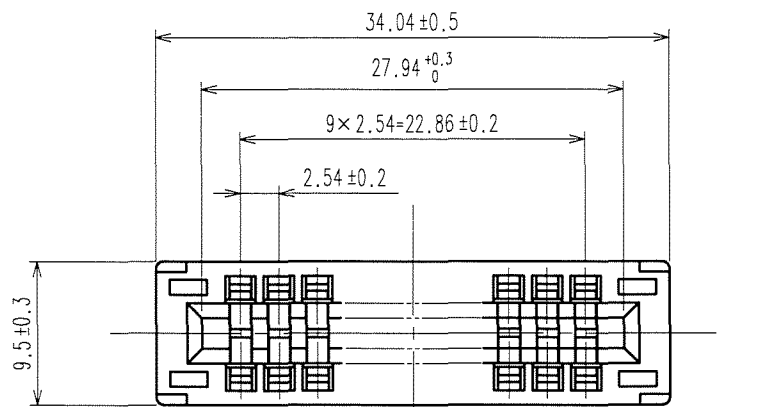


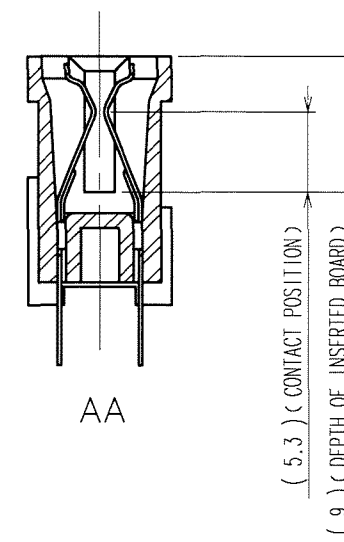
Aug.1.2021 Copyright 2021 HIROSE ELECTRIC CO., LTD. All Rights Reserved.
In case of consideration for using Automotive equipment / device which demand high reliability, kindly contact our sales window correspondents.

TO
PCK

NOTE 1 CONTACT NO. (5,10)
2 A POLARIZING KEY INSERTED BETWEEN THE FOLLOWING CONTACT POSITIONS.
(3~4), (8~9)



RECOMMENDED PC BOARD HOLE PATTERN (t=1.6±0.1)



2	PHOSPHOR BRONZE	CONTACT AREA: Ni2.5μm+Au0.05μm	
		DIP AREA: Ni2.5μm+Sn2μm	
1	PBT	BLACK	UL94V-0
NO.	MATERIAL	FINISH, REMARKS	

CODE NO. (OLD) CL		DRAWN H.Sugimura 07.05.17	DESIGNED H.Sugimura 07.05.17	CHECKED <i>S. Tomioka</i> 07.05.18	APPROVED <i>K. Hiyama</i> 07.05.18	RELEASED .
DRAWING NO. EDC3-018702-01		PART NO. CR22A-20D-2.54DS(70)				
SCALE 2 : 1		CODE NO. CL522-0064-1-70				
UNITS mm		HRS HIROSE ELECTRIC CO., LTD.				

Mouser Electronics

Authorized Distributor

Click to View Pricing, Inventory, Delivery & Lifecycle Information:

[Hirose Electric:](#)

[CR22A-20D-2.54DS\(70\)](#)