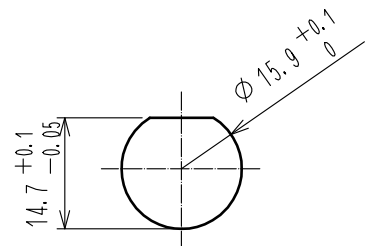


注 1 Indication of label.
 ・ CP-N-JJS-1
 ・ S.NO. *****
 ・ HRS

2. Maximum panel thickness is 7mm.
 Recommended dimension of panel cutout is shown in the right drawing.
 Do not leave any scratches on the surface of a panel, which O-ring of Ref. no. of 11 contacts.

3. If an O-ring came off a groove of a device during transport, please put it back in place and use the device.

RECOMMENDED PANEL CUTOUT



RoHS COMPLIANT

7	BRASS	GOLD PLATING	14		LABEL		
6	PTFE		13	BRASS	NICKEL PLATING		
5	PHOSPHOR BRONZE	GOLD PLATING	12	STAINLESS STEEL	PASSIVATE		
4	BERYLLIUM COPPER	GOLD PLATING	11	SILICONE RUBBER			
3	BRASS	GOLD PLATING	10	SILICONE RUBBER			
2	PTFE		9	BRASS	NICKEL PLATING		
1	BRASS	NICKEL PLATING	8	BRASS	NICKEL PLATING		
NO.	MATERIAL	FINISH .	REMARKS	NO.	MATERIAL	FINISH .	REMARKS

UNITS mm	SCALE 1 : 1	COUNT	DESCRIPTION OF REVISIONS	DESIGNED	CHECKED	DATE
HIROSE ELECTRIC CO., LTD.			APPROVED : KY. SHIMIZU 16.03.11 CHECKED : TO. KATAYAMA 16.03.10 DESIGNED : YI. FUNADA 16.03.09 DRAWN : YI. FUNADA 16.03.09	DRAWING NO. EDC-178986-00-00 PART NO. CP-N-JJS-1 CODE NO. CL355-0134-0-00	1/1	

Mouser Electronics

Authorized Distributor

Click to View Pricing, Inventory, Delivery & Lifecycle Information:

[Hirose Electric:](#)

[CP-N-JJS-1](#)