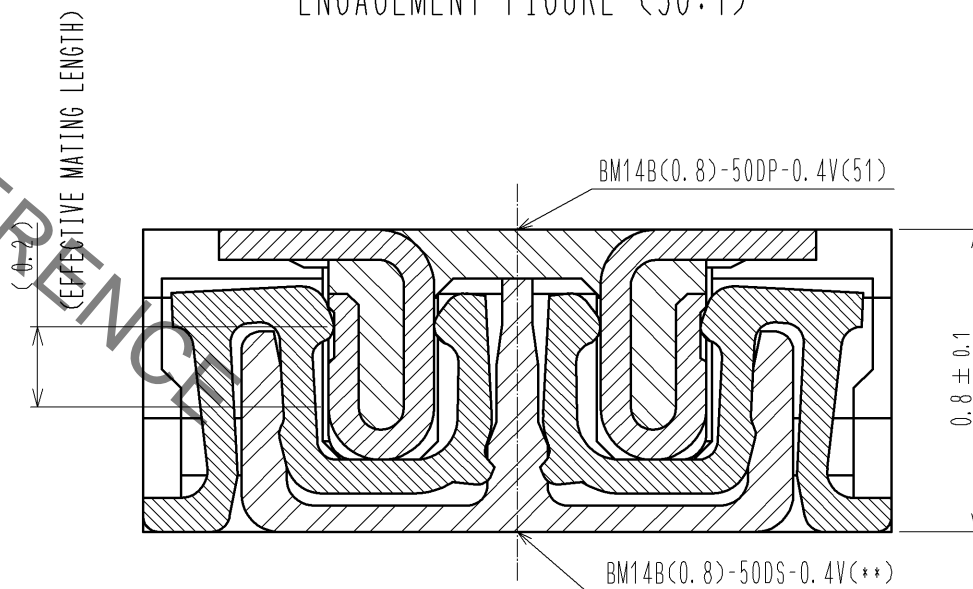


ENGAGEMENT FIGURE (50:1)

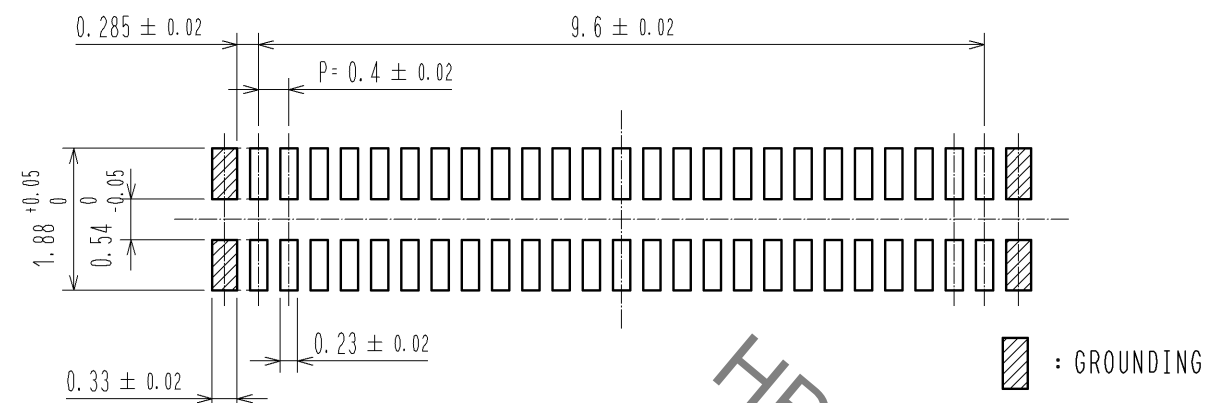


- NOTE) 1. ALL LEAD CO-PLANARITY SHALL BE 0.08mm MAX
2. CONTACT PLATING SPECIFICATIONS
CONTACT AREA : GOLD 0.05 μ m MIN
SMT LEAD : GOLD 0.05 μ m MIN
UNDERPLATING : NICKEL 1 μ m MIN
(SURFACE : SEALING)
3. EACH CONTACTS AT 4 CORNERS ARE PROVIDED FOR METAL FITTINGS AND GROUNDING PURPOSE.
4. HRS MARK AND CAV No. ARE INDICATED IN APPROX POSITION SHOWN.
5. A PART OF THE WALL COULD BE NOTCHED.

3	PS	CLEAR (ENBOSSED CARRIER TAPE)	6	PS	CLEAR (REINFORCEMENT COLLAR)
2	PHOSPHOR BRONZE	2	5	PS	BLACK (PLASTIC REEL)
1	LCP	UL94 V-0, BLACK	4	POLYESTER	CLEAR (COVER TAPE)
NO.	MATERIAL	FINISH , REMARKS	NO.	MATERIAL	FINISH , REMARKS
UNITS mm		SCALE 10 : 1	COUNT 1	DESCRIPTION OF REVISIONS	DESIGNED
		APPROVED : KH. IKEDA	13. 09. 03	DRAWING NO.	EDC3-319851-01
		CHECKED : TS. MIYAZAKI	13. 09. 03	PART NO.	BM14B(0.8)-50DP-0.4V(51)
		DESIGNED : SH. HOSODA	13. 09. 03	CODE NO.	CL684-8016-7-51
		DRAWN : SH. HOSODA	13. 09. 03		
		DATE			

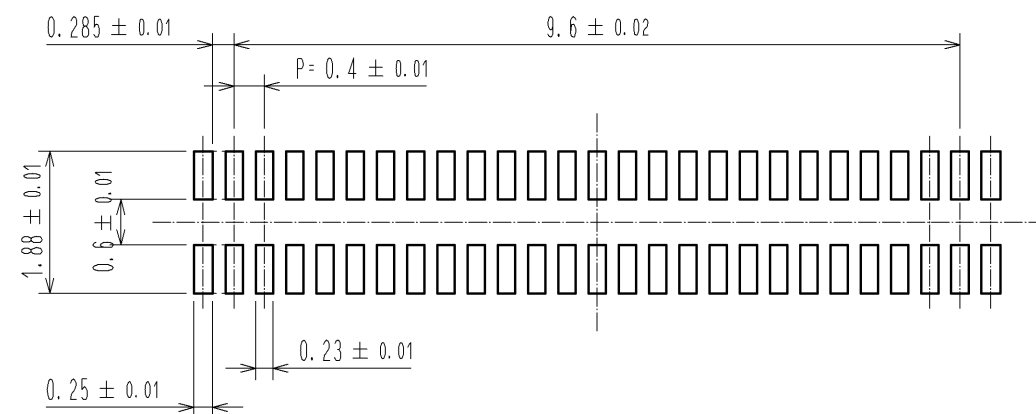
Jul.1.2021 Copyright 2021 HIROSE ELECTRIC CO., LTD. All Rights Reserved.
In case of consideration for using Automotive equipment / device which demand high reliability, kindly contact our sales window correspondents.

◆ RECOMMENDED PCB LAYOUT

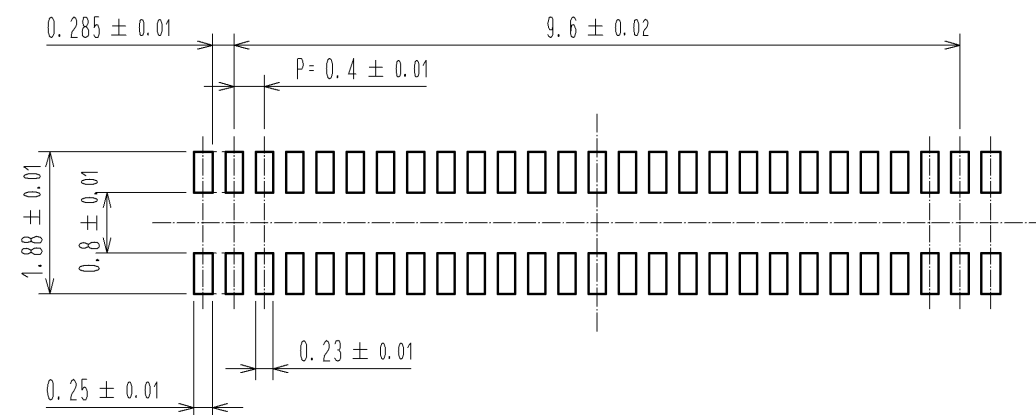


◆ RECOMMENDED METAL MASK DIMENSIONS

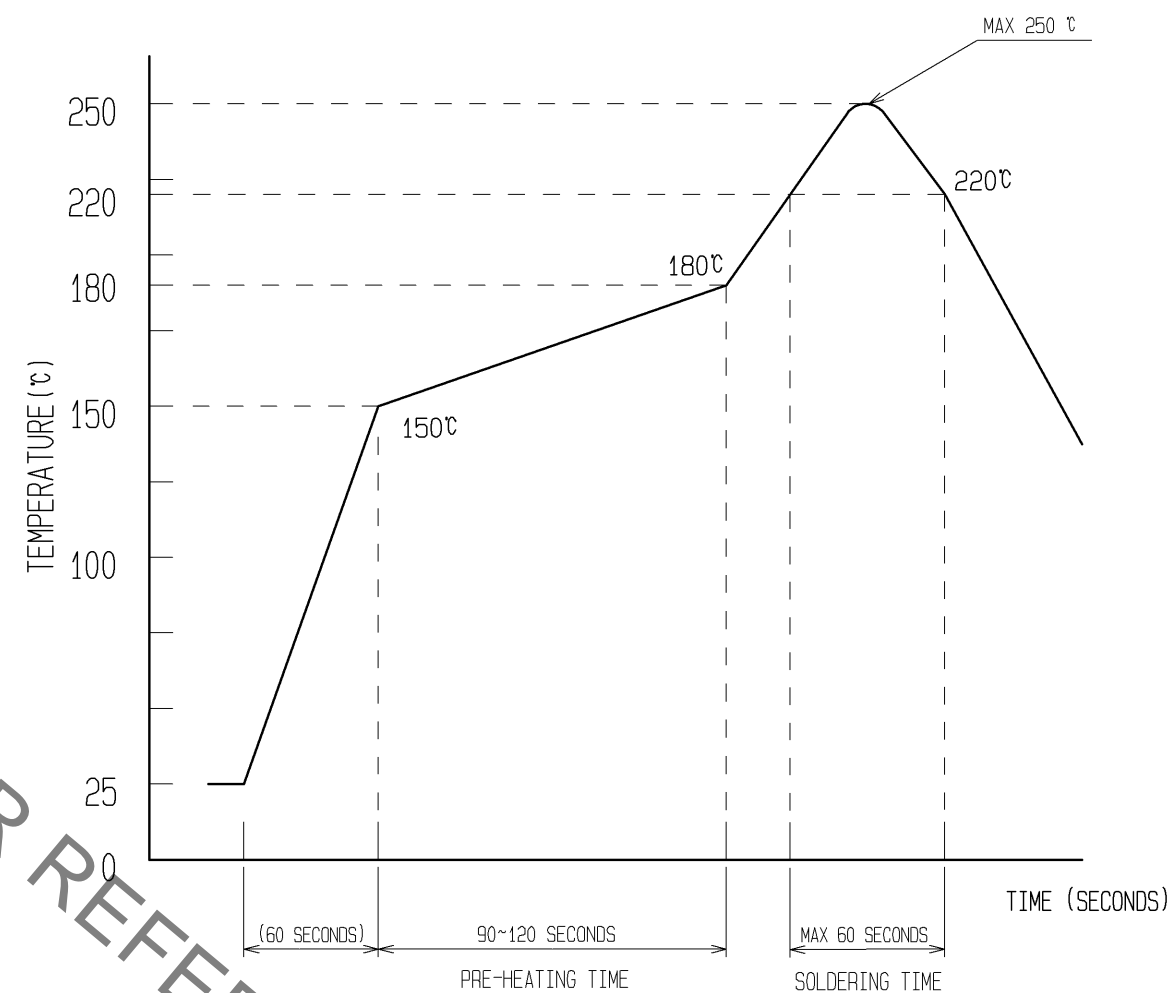
METAL MASK THICKNESS : $100 \mu\text{m}$



METAL MASK THICKNESS : $120 \mu\text{m}$



6) RECOMMENDED REFLOW TEMPERATURE PROFILE USING LEAD-FREE SOLDER PASTE.



REFLOW METHOD: IR REFLOW
NUMBER OF REFLOW CYCLES: 2 CYCLES MAX.

- 1) REFLOW TIME
DURATION ABOVE 220°C , 60 SEC. MAX.
(PEAK TEMPERATURE: 250°C MAX)
- 2) PRE-HEAT TIME
PRE-HEAT TEMPERATURE(MIN): 150°C
PRE-HEAT TEMPERATURE(MAX): 180°C
PRE-HEAT TIME: 90-120 sec.

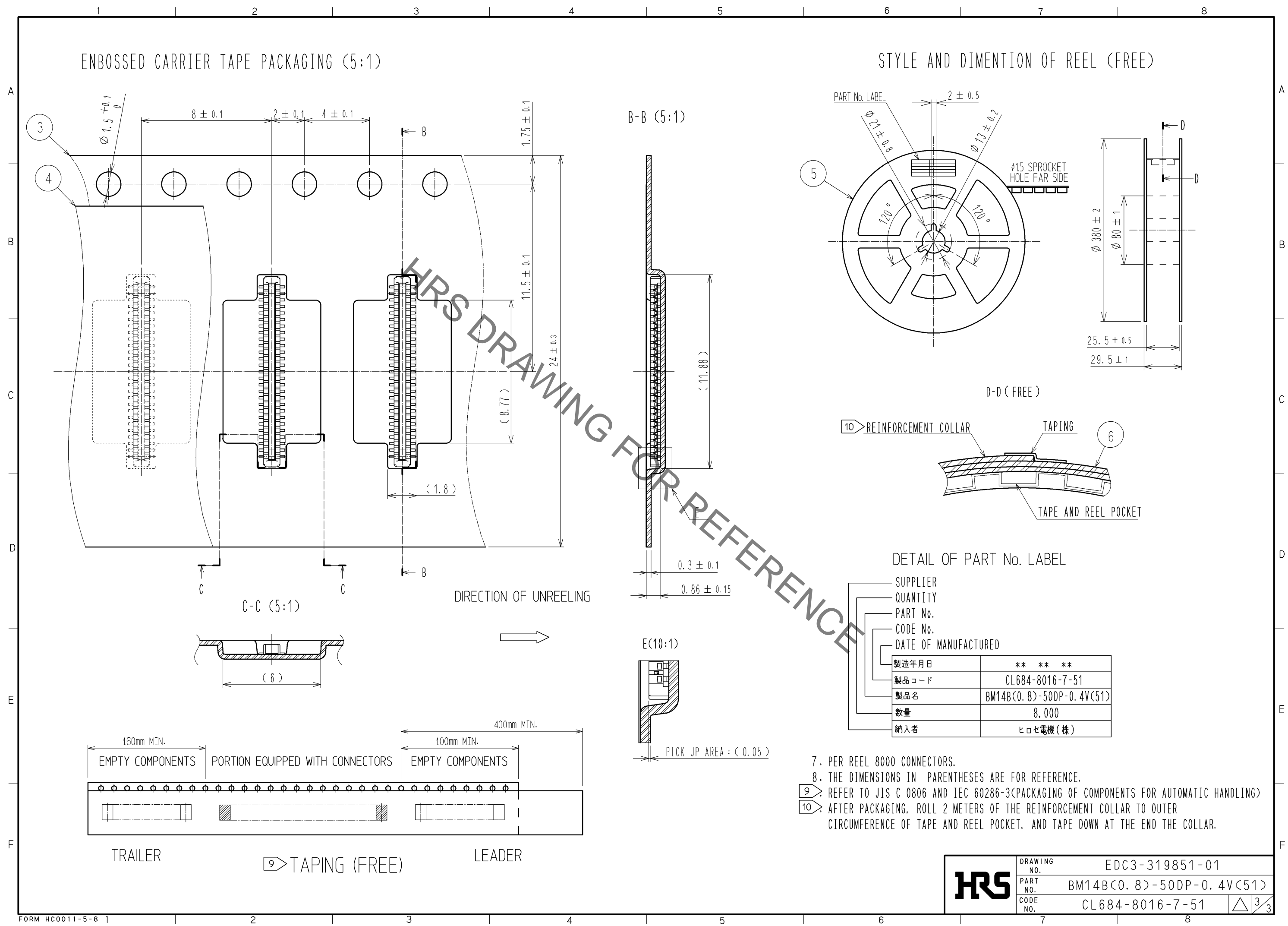
6) THIS TEMPERATURE PROFILE IS PER THE CONDITIONS SHOWN ABOVE.
ADDITIONAL FACTORS, SUCH AS SOLDER PASTE TYPE, PCB SIZE AND
OTHER MOUNTED COMPONENTS COULD AFFECT THE PROFILE, THEREFORE,
A THOROUGH EVALUATION OF MOUNTING CONDITION IS REQUIRED
PRIOR TO PRODUCTION. TEMPERATURE IS MEASURED AT CONTACT LEAD.

HRS

DRAWING NO.	EDC3-319851-01
PART NO.	BM14B(0.8)-50DP-0.4V(51)
CODE NO.	CL684-8016-7-51

2/3

Jul.1.2021 Copyright 2021 HIROSE ELECTRIC CO., LTD. All Rights Reserved.
In case of consideration for using Automotive equipment / device which demand high reliability, kindly contact our sales window correspondents.



HRS	DRAWING NO.	EDC3-319851-01		
	PART NO.	BM14B(0.8)-50DP-0.4V(51)		
	CODE NO.	CL684-8016-7-51	△	3/3

Mouser Electronics

Authorized Distributor

Click to View Pricing, Inventory, Delivery & Lifecycle Information:

[Hirose Electric:](#)

[BM14B\(0.8\)-50DP-0.4V\(51\)](#)