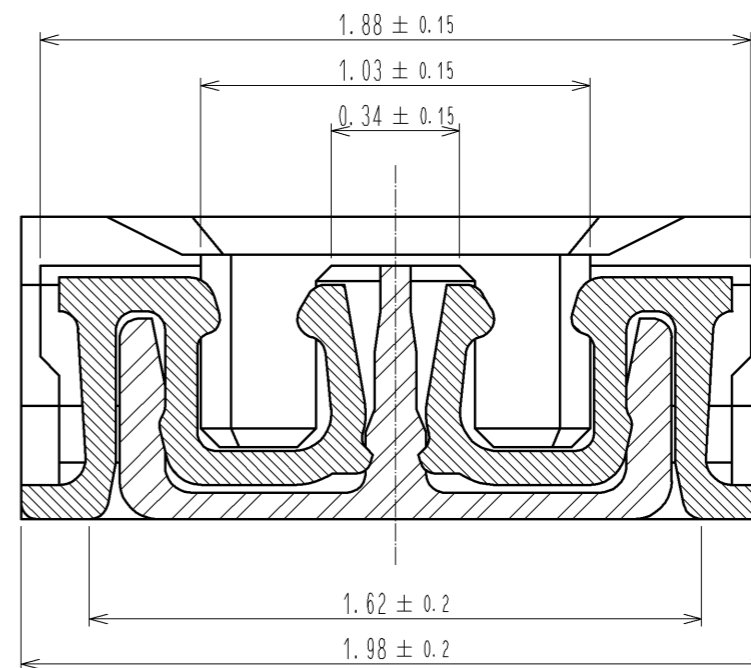
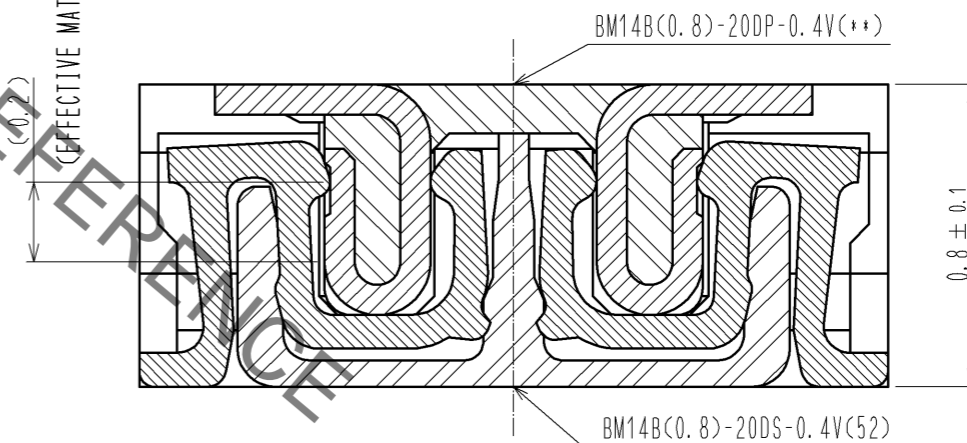


- NOTE) 1. ALL LEAD CO-PLANARITY SHALL BE 0.08mm MAX
2. CONTACT PLATING SPECIFICATIONS.
CONTACT AREA : GOLD $0.05 \mu\text{m}$ MIN
SMT LEAD : GOLD $0.05 \mu\text{m}$ MIN
UNDERPLATING : NICKEL $1 \mu\text{m}$ MIN
(SURFACE : SEALING)
3. EACH CONTACTS AT 4 CORNERS ARE PROVIDED FOR METAL FITTINGS AND GROUNDING PURPOSE.
4. HRS MARK AND CAV NO. ARE INDICATED IN APPROX POSITION SHOWN.
5. GATE POSITION IS INDICATED IN APPROX POSITION SHOWN.

A-A (50:1)



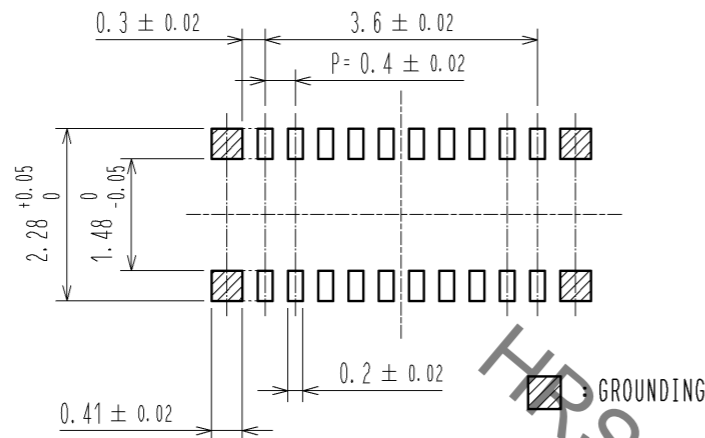
ENGAGEMENT FIGURE (50:1)



3	PS	CLEAR (ENBOSSED CARRIER TAPE)	7	PS	CLEAR (REINFORCEMENT COLLAR)
2	PHOSPHOR BRONZE	2	6	POLYIMIDE	BROWN (HEAT RESISTANCE TAPE)
1	LCP	UL94 V-0, BLACK	5	PS	BLACK (PLASTIC REEL)
NO.	MATERIAL	FINISH, REMARKS	4	POLYESTER	CLEAR (COVER TAPE)
NO.	MATERIAL	FINISH, REMARKS	NO.	MATERIAL	FINISH, REMARKS
UNITS mm		SCALE 10:1	COUNT 1	DESCRIPTION OF REVISIONS	DESIGNED
APPROVED : KH. IKEDA	11.04.11	DRAWING NO.	EDC3-319839-02	CHECKED	DATE
CHECKED : AR. TAKAHASHI	11.04.08	PART NO.	BM14B(0.8)-20DS-0.4V(52)		
DESIGNED : SH. HOSODA	11.04.08	CODE NO.	CL684-8004-8-52		
DRAWN : KR. AJITO	11.04.06				

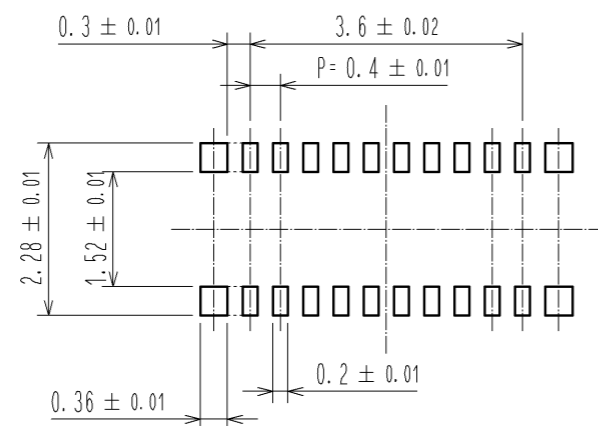
HRS HIROSE ELECTRIC CO., LTD.

◆ RECOMMENDED PCB LAYOUT

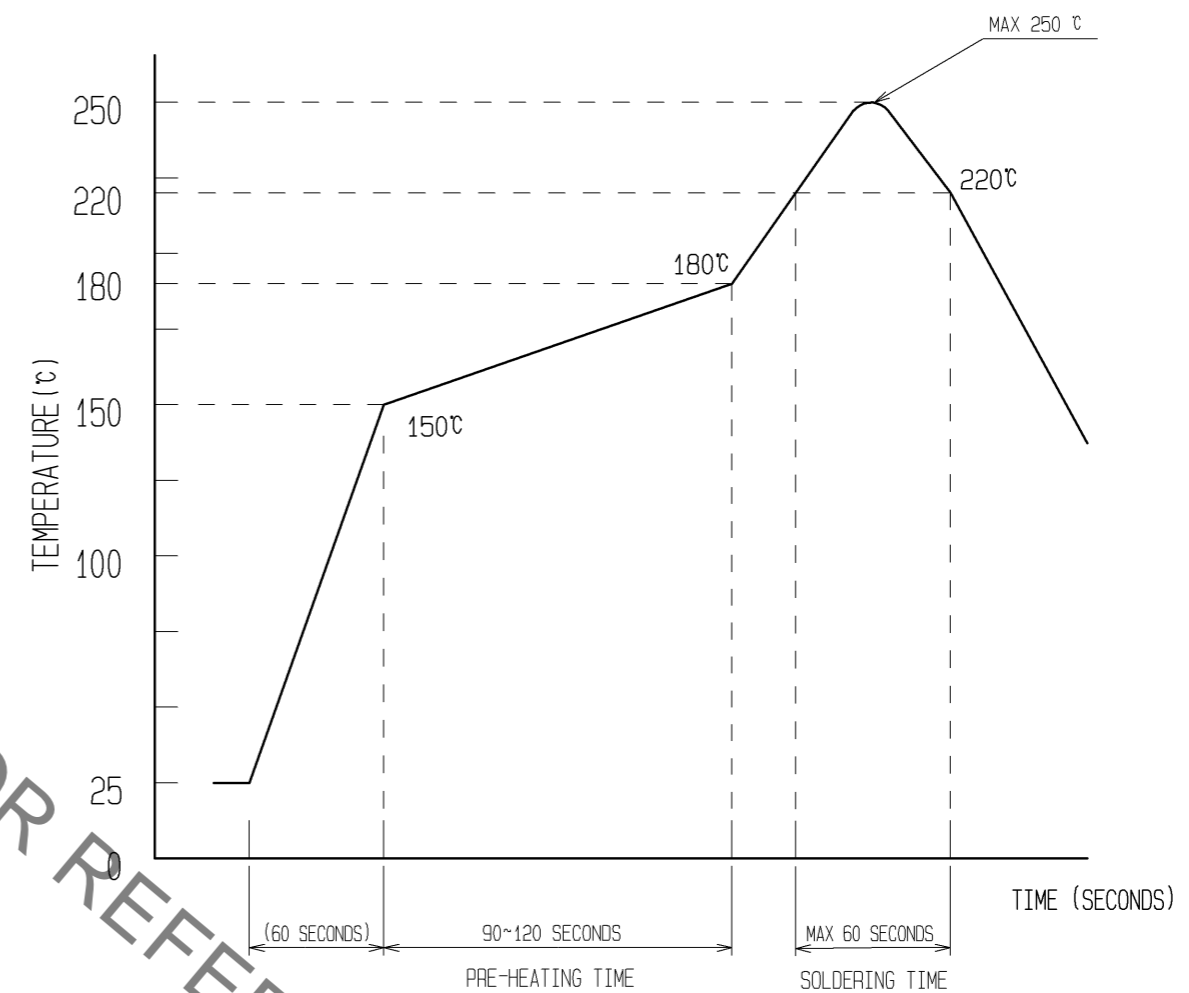


◆ RECOMMENDED METAL MASK DIMENSIONS

METAL MASK THICKNESS : $100 \mu\text{m}$



6 RECOMMENDED REFLOW TEMPERATURE PROFILE USING LEAD-FREE SOLDER PASTE.



REFLOW METHOD: IR REFLOW
NUMBER OF REFLOW CYCLES: 2 CYCLES MAX.

- 1) REFLOW TIME
DURATION ABOVE 220°C , 60 SEC. MAX.
(PEAK TEMPERATURE: 250°C MAX)
- 2) PRE-HEAT TIME
PRE-HEAT TEMPERATURE(MIN): 150°C
PRE-HEAT TEMPERATURE(MAX): 180°C
PRE-HEAT TIME: 90~120 sec.

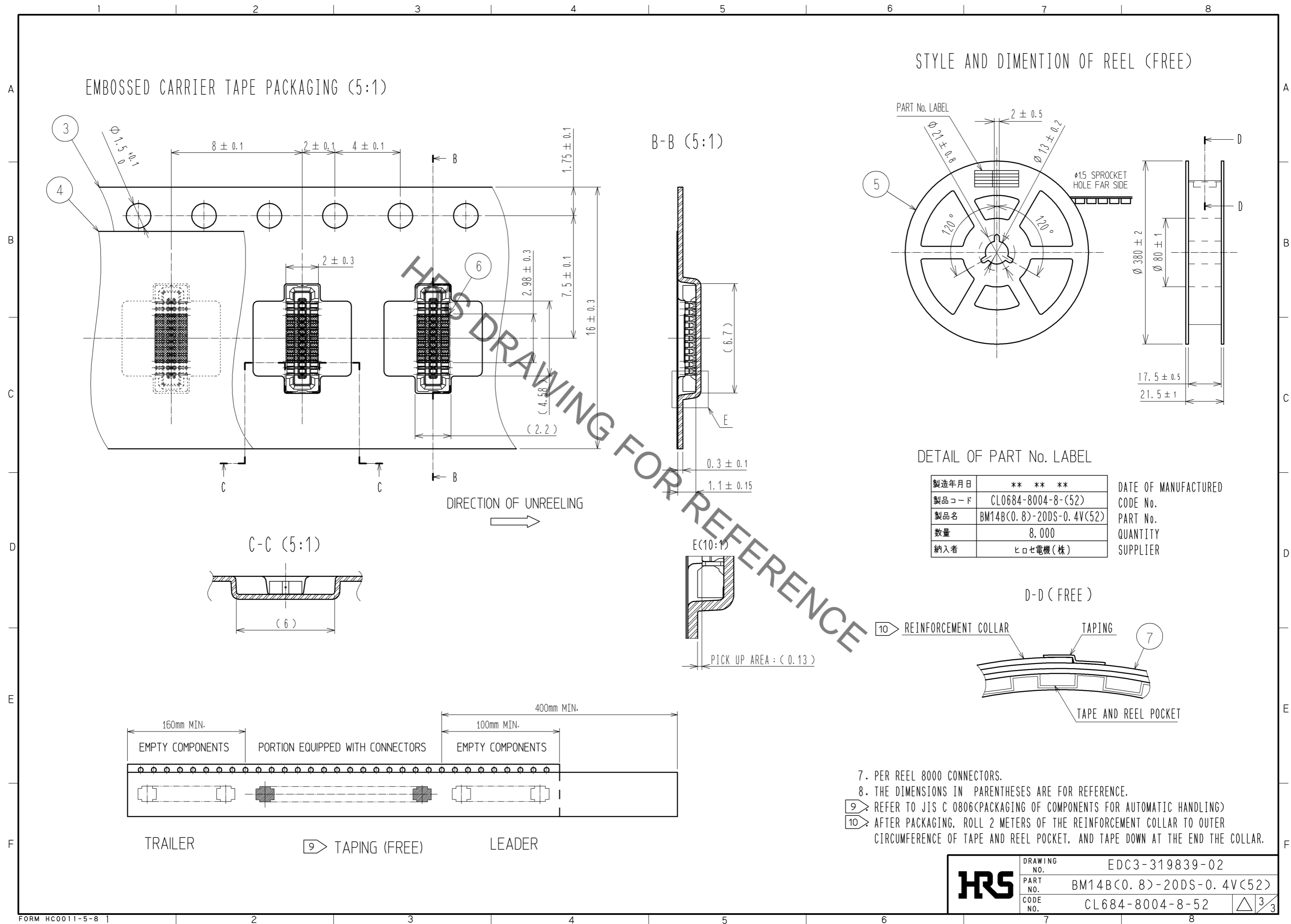
6 THIS TEMPERATURE PROFILE IS PER THE CONDITIONS SHOWN ABOVE.
ADDITIONAL FACTORS, SUCH AS SOLDER PASTE TYPE, PCB SIZE AND
OTHER MOUNTED COMPONENTS COULD AFFECT THE PROFILE, THEREFORE,
A THOROUGH EVALUATION OF MOUNTING CONDITION IS REQUIRED
PRIOR TO PRODUCTION. TEMPERATURE IS MEASURED AT CONTACT LEAD.

HRS

DRAWING NO.	EDC3-319839-02
PART NO.	BM14B(0.8)-20DS-0.4V(52)
CODE NO.	CL684-8004-8-52

2/3

Aug.1.2021 Copyright 2021 HIROSE ELECTRIC CO., LTD. All Rights Reserved.
In case of consideration for using Automotive equipment / device which demand high reliability, kindly contact our sales window correspondents.



Mouser Electronics

Authorized Distributor

Click to View Pricing, Inventory, Delivery & Lifecycle Information:

[Hirose Electric:](#)

[BM14B\(0.8\)-20DS-0.4V\(52\)](#)