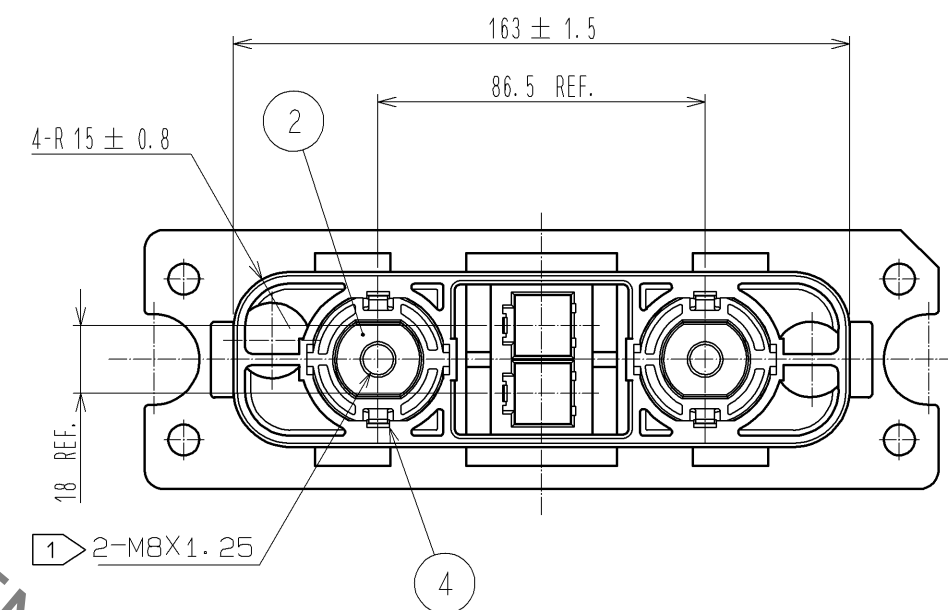
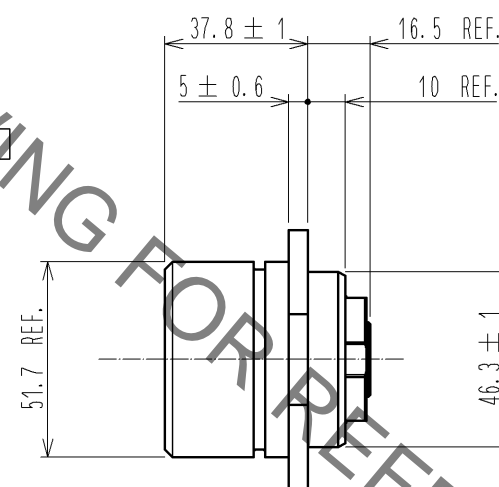
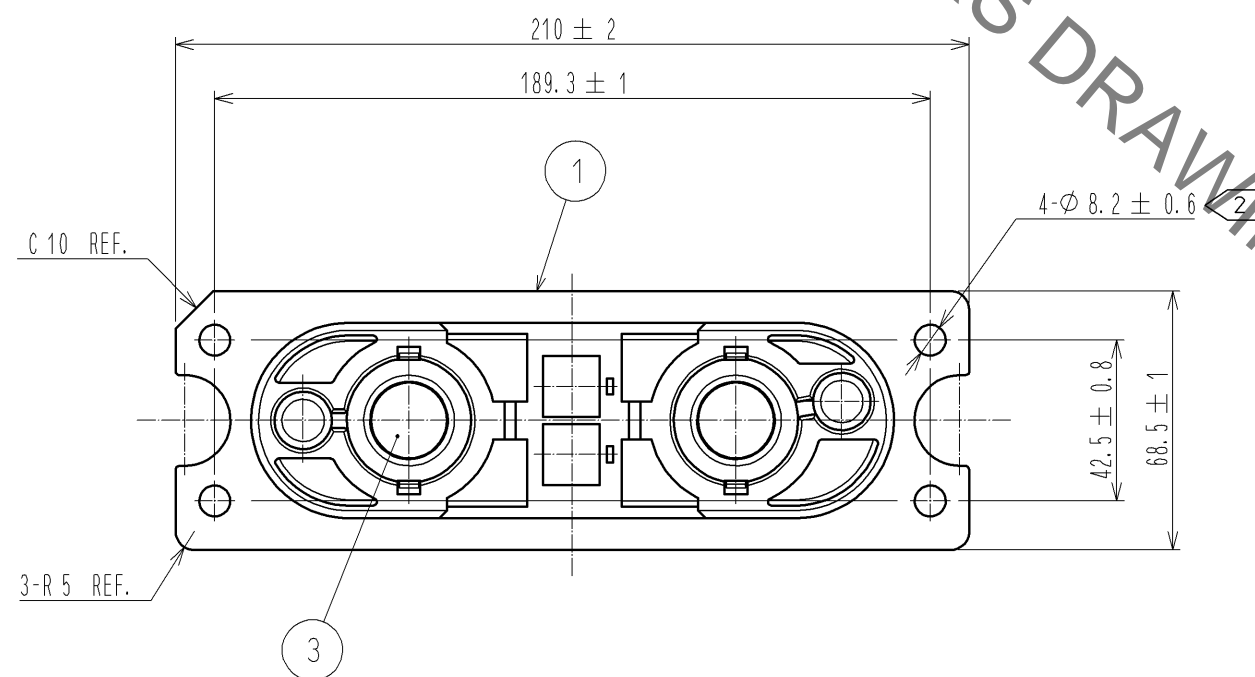
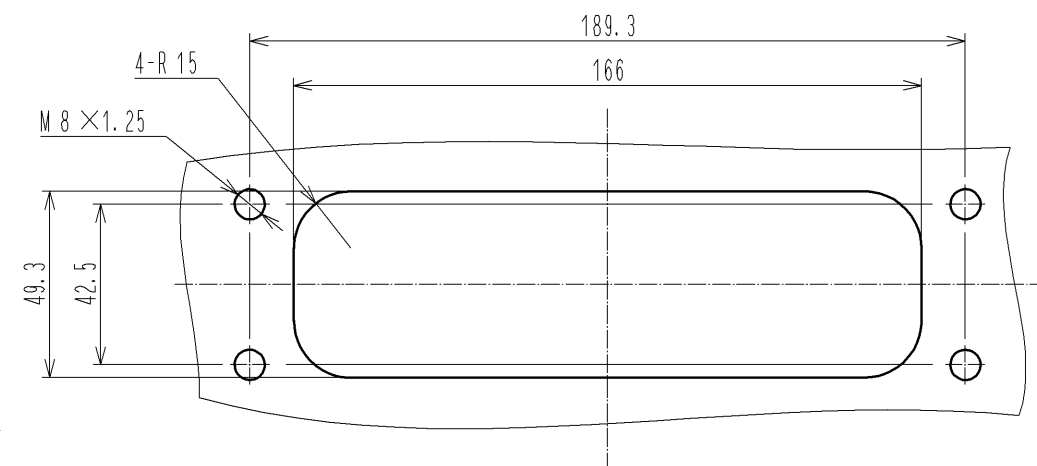
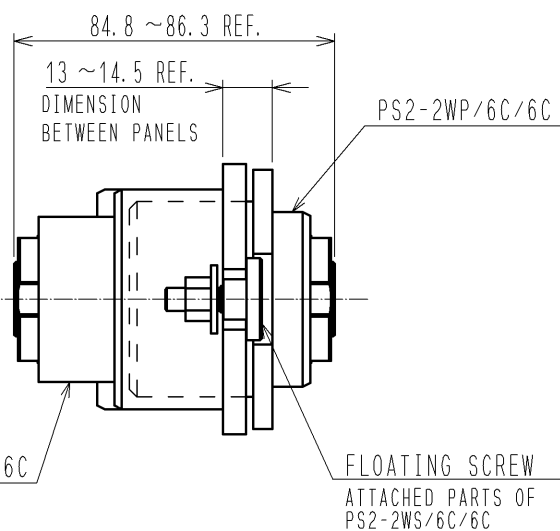


Jan.1.2022 Copyright 2022 HIROSE ELECTRIC CO., LTD. All Rights Reserved.
In case of consideration for using Automotive equipment / device which demand high reliability, kindly contact our sales window correspondents.

MATED CONDITION

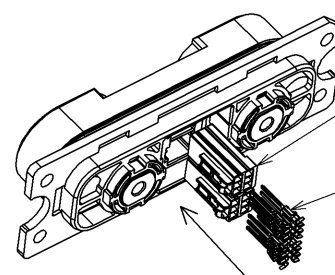
PANEL CUTOUT

TOLERANCES HAS NOT BEEN DESCRIBED
REFERENCE DIMENSION.



- NOTES
- 1 THE RECOMMENDED TIGHTENING TORQUE OF REF NO.2 TO BE 13 N · m.
 - 2 THE SCREW USED FOR PANEL ATTACHMENT IS SET TO M8.
AND THE RECOMMENDED TIGHTENING TORQUE TO BE 13 N · m.
 3. APPLICABLE CONNECTOR IS SHOWN IN THE TABLE BELOW.

PRODUCT NAME	CL CODE
PS2-2WS/6C/6C	CL236-1033-1-00



PS2-6PC(**) X2
CL236-1034-4-**
SOLD SEPARATELY
PS2-1618PCFA X12
CL236-1028-1-00
SOLD SEPARATELY

2	BRASS	SILVER PLATING 3μm min	4	PBT	BLACK , UL94V-0
1	PBT	BLACK , UL94V-0	3	PBT	BLACK , UL94V-0
NO.	MATERIAL	FINISH , REMARKS	NO.	MATERIAL	FINISH , REMARKS
UNITS mm		SCALE 1 : 2	COUNT		DESCRIPTION OF REVISIONS
HRS		APPROVED : RI. TAKAYASU	11.12.08		DRAWING NO. EDC3-127810-01
HIROSE ELECTRIC CO., LTD.		CHECKED : YH. ENAMI	11.12.07		PART NO. PS2-2WP/6C/6C
		DESIGNED : KI. NAGANUMA	11.12.07		CODE NO. CL236-1032-9-00
		DRAWN : KI. NAGANUMA	11.12.07		DATE

Mouser Electronics

Authorized Distributor

Click to View Pricing, Inventory, Delivery & Lifecycle Information:

[Hirose Electric:](#)

[PS2-2WP/6C/6C](#)