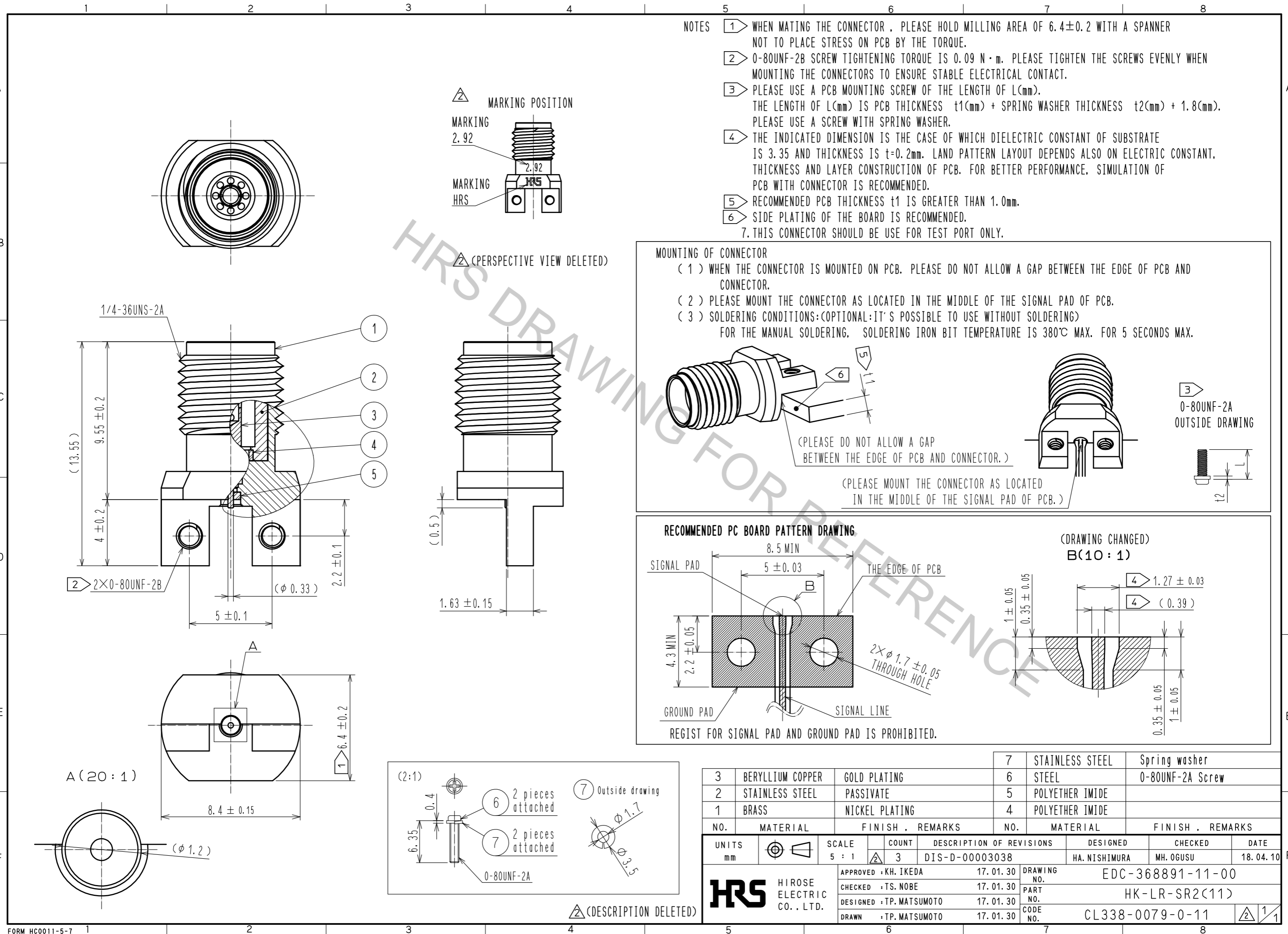


Dec.1.2018 Copyright 2018 HIROSE ELECTRIC CO., LTD. All Rights Reserved.
 In case that the application demands a high level of reliability, such as automotive,
 please contact a company representative for further information.



NO.	MATERIAL	FINISH	REMARKS	NO.	MATERIAL	FINISH	REMARKS
3	BERYLLIUM COPPER	GOLD PLATING		7	STAINLESS STEEL		Spring washer
2	STAINLESS STEEL	PASSIVATE		6	STEEL		0-80UNF-2A Screw
1	BRASS	NICKEL PLATING		5	POLYETHER IMIDE		
				4	POLYETHER IMIDE		

UNITS	SCALE	COUNT	DESCRIPTION OF REVISIONS	DESIGNED	CHECKED	DATE
mm	5:1	3	DIS-D-00003038	HA. NISHIMURA	MH. OGUSU	18.04.10

APPROVED	CHECKED	DESIGNED	DRAWN	DRAWING NO.	PART NO.	CODE NO.
KH. IKEDA	TS. NOBE	TP. MATSUMOTO	TP. MATSUMOTO	EDC-368891-11-00	HK-LR-SR2(11)	CL338-0079-0-11

Mouser Electronics

Authorized Distributor

Click to View Pricing, Inventory, Delivery & Lifecycle Information:

[Hirose Electric:](#)

[HK-LR-SR2\(11\)](#)