

“Stay Connected with” HEYware

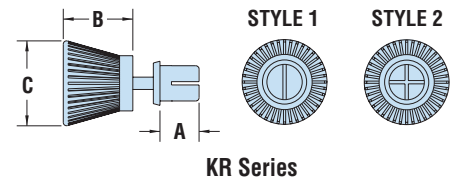


HEYClip™ Releasable Type T Rivets

| WILL FIT THESE PANELS | | | | | PART NO. | | DESCRIPTION | PART DIMENSIONS | | | | | | STYLE | |
|-----------------------|---------------------------|-----|------|------|----------|-------------|-------------|-----------------|-------------|---------------|-----|-----|-----|-------|-----|
| MOUNTING HOLE DIA. | ASSEMBLED PANEL THICKNESS | | | | Black | White | | A | | B | | C | | | |
| | in. | mm. | Min. | Max. | | | | Length | Head Height | Head Diameter | in. | mm. | in. | | mm. |
| KR Series | | | | | | | | | | | | | | | |
| .122 | 3,1 | .04 | 1,0 | .08 | 2,0 | 9088 | 9089 | KR 122-039 | .14 | 3,5 | | | | | 1 |
| | | .08 | 2,0 | .12 | 3,0 | 9090 | 9091 | KR 122-079 | .18 | 4,5 | | | | | |
| | | .12 | 3,0 | .16 | 4,0 | 9092 | 9093 | KR 122-118 | .22 | 5,5 | | | | | |
| | | .16 | 4,0 | .20 | 5,0 | 9094 | 9095 | KR 122-157 | .26 | 6,5 | .32 | 8,0 | .39 | 10,0 | |
| | | .20 | 5,0 | .24 | 6,0 | 9194 | 9195 | KR 122-197 | .30 | 7,5 | | | | | |
| | | .22 | 5,5 | .26 | 6,5 | 9096 | 9097 | KR 122-217 | .32 | 8,0 | | | | | |
| .142 | 3,6 | .04 | 1,0 | .08 | 2,0 | 9098 | 9099 | KR 142-039 | .14 | 3,5 | | | | | 2 |
| | | .08 | 2,0 | .12 | 3,0 | 9100 | 9101 | KR 142-079 | .18 | 4,5 | | | | | |
| | | .12 | 3,0 | .16 | 4,0 | 9102 | 9103 | KR 142-118 | .22 | 5,5 | | | | | |
| | | .14 | 3,5 | .18 | 4,5 | 9104 | 9105 | KR 142-137 | .24 | 6,0 | .32 | 8,0 | .39 | 10,0 | |
| | | .18 | 4,5 | .22 | 5,5 | 9106 | 9107 | KR 142-177 | .28 | 7,0 | | | | | |
| | | .22 | 5,5 | .26 | 6,5 | 9196 | 9197 | KR 142-217 | .32 | 8,0 | | | | | |
| .161 | 4,1 | .10 | 2,5 | .14 | 3,5 | 9108 | 9109 | KR 161-098 | .20 | 5,0 | | | | | 2 |
| | | .14 | 3,5 | .18 | 4,5 | 9110 | 9111 | KR 161-137 | .24 | 6,0 | | | | | |
| | | .18 | 4,5 | .22 | 5,5 | 9112 | 9113 | KR 161-177 | .28 | 7,0 | | | | | |
| | | .22 | 5,5 | .26 | 6,5 | 9114 | 9115 | KR 161-217 | .32 | 8,0 | .32 | 8,0 | .47 | 12,0 | |
| | | .26 | 6,5 | .30 | 7,5 | 9198 | 9199 | KR 161-256 | .35 | 9,0 | | | | | |
| | | .30 | 7,5 | .34 | 8,5 | 9116 | 9117 | KR 161-295 | .39 | 10,0 | | | | | |

Standard colors black and white.

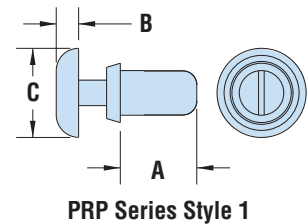
- The “T” style rivet is designed with a **large finger grip**, knob-shaped head for optimal installation and removal by simply pushing or pulling the rivet from the hole.
- Can be used multiple times.
- Part Description Key: KR X-Y where X = Mounting Hole Diameter (inches) and Y = minimum Panel Thickness (inches).
- Standard Material: Nylon 6. Nylon 6/6 UL 94V-0 available by special order, consult Heyco.
- Standard Pack - 1,000/bag.



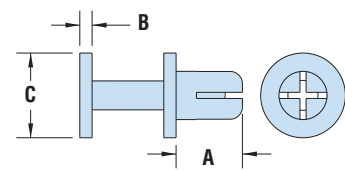
HEYClip™ Type P Snap Rivets Polysulfone High Temperature Snap Rivets

| WILL FIT THESE PANELS | | | | | PART NO. | | DESCRIPTION | PART DIMENSIONS | | | | | | STYLE |
|-----------------------|---------------------------|------|------|------|----------|-------------|-------------|-----------------|-------------|---------------|-----|-----|-----|-------|
| MOUNTING HOLE DIA. | ASSEMBLED PANEL THICKNESS | | | | Black | | | A | | B | | C | | |
| | in. | mm. | Min. | Max. | | | | Length | Head Height | Head Diameter | in. | mm. | in. | |
| PRP Series | | | | | | | | | | | | | | |
| .122 | 3,1 | .078 | 2,0 | .118 | 3,0 | 9349 | PRP 122-079 | .18 | 4,5 | .06 | 1,6 | .25 | 6,4 | 1 |
| | | .118 | 3,0 | .157 | 4,0 | 9350 | PRP 122-118 | .22 | 5,6 | | | | | |
| .161 | 4,1 | .157 | 4,0 | .197 | 5,0 | 9351 | PRP 122-157 | .26 | 6,5 | .04 | 1,0 | .28 | 7,0 | 2 |

Standard color black.



PRP Series Style 1



PRP Series Style 2

| | KR | PRP |
|---------------------|------------------------------|-----------------------------|
| Material | Nylon 6 | Polysulfone (PSU) |
| Flammability Rating | 94V-2 | 94-HB |
| Temperature Range | -4°F (-18°C) to 185°F (85°C) | 32°F (0°C) to 302°F (150°C) |

Quick Specs

Mouser Electronics

Authorized Distributor

Click to View Pricing, Inventory, Delivery & Lifecycle Information:

[Heyco:](#)

[9114](#) [9091](#) [9116](#) [9090](#) [9107](#) [9095](#) [9089](#) [9199](#) [9105](#) [9093](#) [9097](#) [9103](#) [9094](#) [9106](#) [9197](#) [9110](#) [9108](#) [9194](#)
[9111](#) [9195](#) [9092](#) [9104](#) [9102](#) [9198](#) [9112](#) [9101](#) [9100](#) [9113](#) [9115](#) [9098](#) [9096](#) [9109](#) [9117](#) [9088](#) [9099](#) [9196](#)
[9350](#) [9349](#) [9351](#)