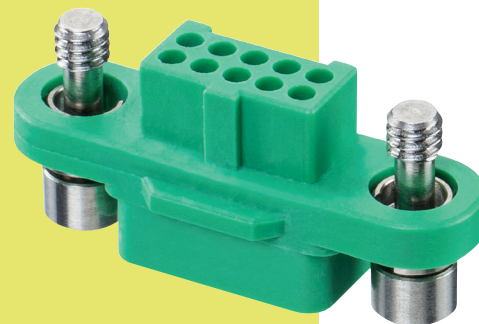


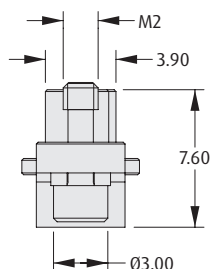
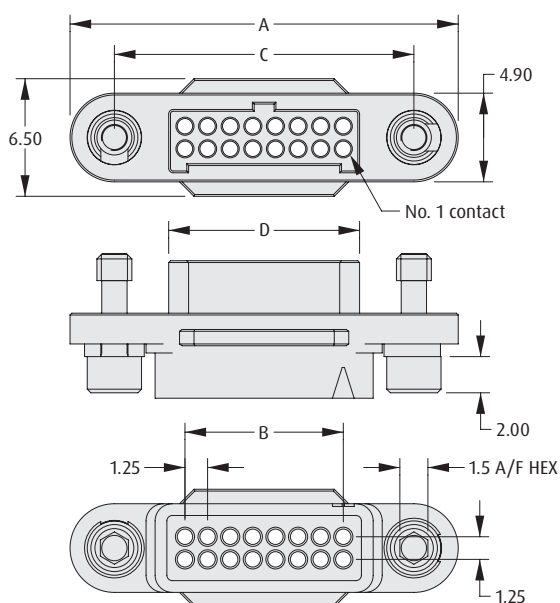
# Gecko Screw-Lok Connectors

## Female Crimp Housings

- Features 2.5mm potting wall for extra security.
- No. 1 position identified on housing.
- 3 polarizing points on each housing prevent mis-mating.
- Available without fixing screws, for use with metal hoods shown on a following page.
- Use with female crimp contacts and pre-cabled contacts shown on following pages.



### FEMALE



### CALCULATION

<b>A</b>	$B + 12.7$
<b>B</b>	$0.625 \times (\text{Total No. of contacts} - 2)$
<b>C</b>	$B + 7.8$
<b>D</b>	$B + 1.8$

### TOOLS

**Recommended Crimp Tool** - Z125-900

**Positioner** - Z125-901

**Contact Insertion/Removal Tool** - Z125-902

Female contacts shown on following pages.

Instruction sheets available at [www.harwin.com/instructions](http://www.harwin.com/instructions).

### HOW TO ORDER

<b>SERIES CODE</b>	<b>G125 - 224 XX 96 XX</b>				
<b>TYPE</b>	<b>224</b> Female Housing				
<b>TOTAL NO. OF CONTACTS</b>	<b>06, 10, 12, 16, 20, 26, 34, 50</b>				
<b>SCREW-LOK</b>	<table border="1"> <tr> <td><b>F1</b></td> <td>Floating Hex Socket fixings</td> </tr> <tr> <td><b>00</b></td> <td>No fixings (use with Metal Hoods)</td> </tr> </table>	<b>F1</b>	Floating Hex Socket fixings	<b>00</b>	No fixings (use with Metal Hoods)
<b>F1</b>	Floating Hex Socket fixings				
<b>00</b>	No fixings (use with Metal Hoods)				
<b>FINISH</b>	<b>96</b> Housing				

All dimensions in mm.

Patent Published

# Mouser Electronics

Authorized Distributor

Click to View Pricing, Inventory, Delivery & Lifecycle Information:

Harwin:

G125-224069600