

# Customer Information Sheet

DRAWING No.: Z80-293

SHEET 2 OF 2

IF IN DOUBT - ASK

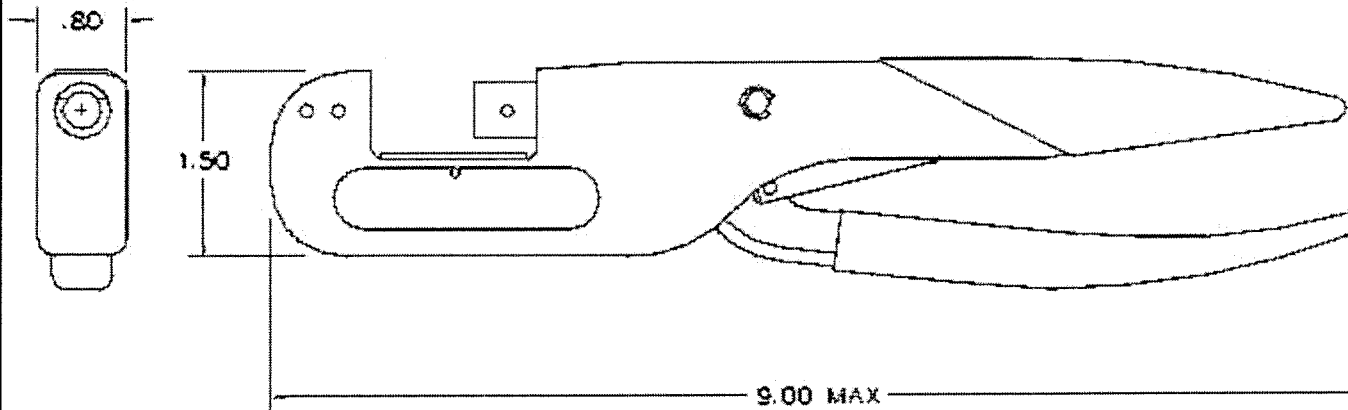
©

THIRD ANGLE PROJECTION

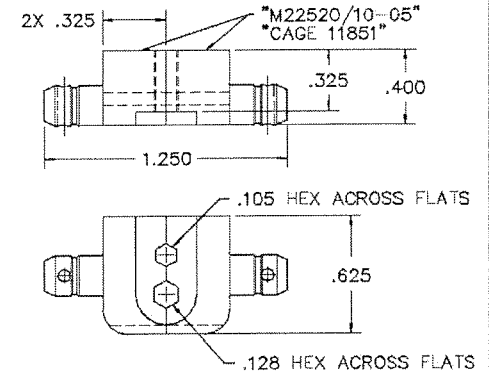
NOT TO SCALE

ALL DIMENSIONS IN mm

HAND CRIMP TOOL



DIE SET



## NOTES:

1. HAND CRIMP TOOL SUPPLIED WITH DIE SET ASSEMBLED AND USED WITH:

CONTACT ASSY PART No.
M80-305, M80-306, M80-307
M80-308, M80-309
M80-315, M80-316, M80-317
M80-318, M80-319

2. ALL DIMENSIONS ARE IN INCHES AND ARE FOR REFERENCE PURPOSES ONLY.

BMK	1	24.11.05	---
NAME	ISS.	DATE	C/NOTE
APPROVED			
CHECKED:			
DRAWN:			B. M. KENT
CUSTOMER REF:			
ASSEMBLY DRG:			

**HARWIN**

HARWIN INC  
U.S.A.  
TEL: (812) 285 0055  
FAX: (812) 285 0056

HARWIN PLC  
U.K.  
TEL: 023 9237 0451  
FAX: 023 9231 4590

HARWIN PTE  
SINGAPORE  
TEL: 65 7794909  
FAX: 65 7793868

THIS INFORMATION AND ANY  
INFORMATION OR DESCRIPTIVE  
MATTER SET OUT HEREON ARE  
CONFIDENTIAL AND COPYRIGHT  
PROPERTY OF THE HARWIN  
GROUP AND MUST NOT BE  
DISCLOSED, LOANED, COPIED  
OR USED FOR MANUFACTURING,  
TENDERING OR FOR ANY  
OTHER PURPOSE WITHOUT  
THEIR WRITTEN PERMISSION.

## TOLERANCES

X. =  $\pm 1\text{mm}$   
X.X =  $\pm 0.25\text{mm}$   
X.XX =  $\pm 0.10\text{mm}$   
X.XXX =  $\pm 0.01\text{mm}$

ANGLES =  $\pm 5^\circ$   
UNLESS STATED

## MATERIAL:

FINISH:

S/AREA:

## TITLE:

DATAMATE SPECIAL CONTACT  
HAND CRIMP TOOL WITH DIE SET

DRAWING NUMBER:

**Z80-293**

SHT

2

OF

2

# Mouser Electronics

Authorized Distributor

Click to View Pricing, Inventory, Delivery & Lifecycle Information:

[Harwin:](#)

[Z80-293](#)