

Customer Information Sheet

DRAWING No.: Z80-290

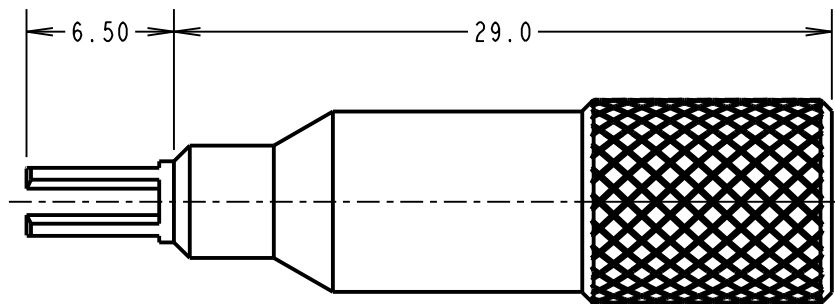
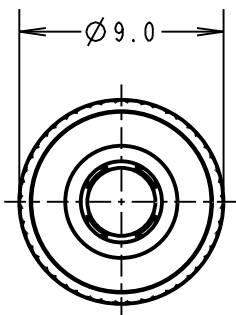
IF IN DOUBT - ASK

©

NOT TO SCALE

THIRD ANGLE PROJECTION

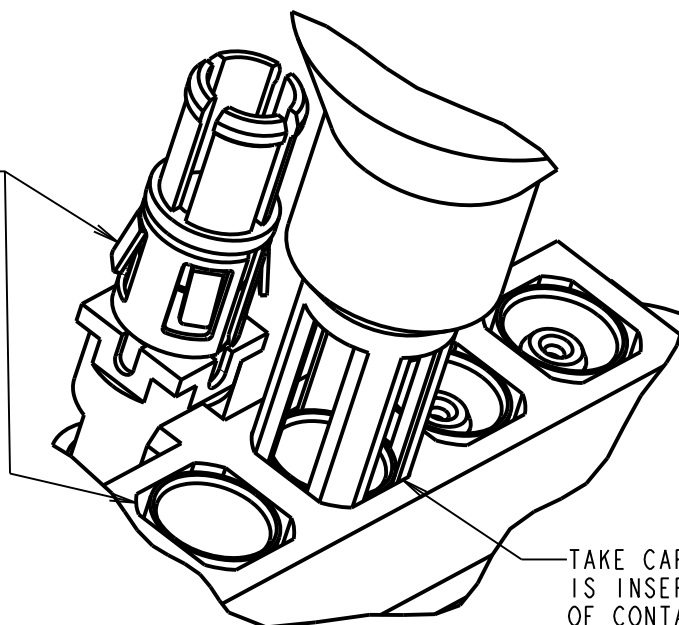
ALL DIMENSIONS IN mm



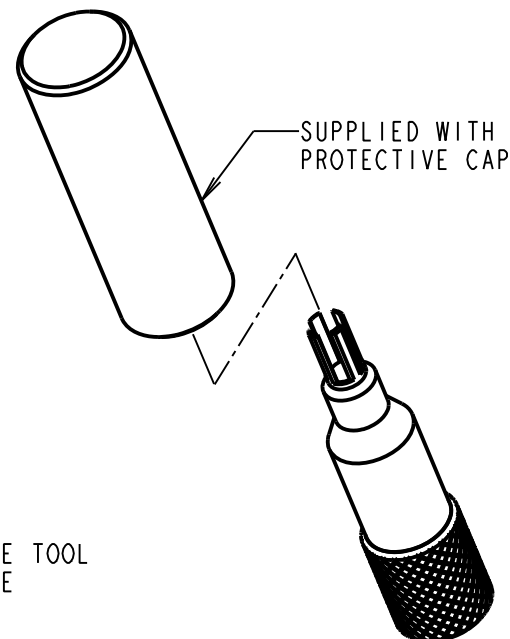
FOR REMOVAL OF
CONTACT PART No.:

| |
|------------------------------------|
| M80-305, M80-307, M80-308, M80-309 |
| M80-315, M80-317, M80-318, M80-319 |
| M80-325, M80-326, M80-327, M80-PF5 |
| M80-328, M80-329 |
| M80-32A, M80-32B, M80-32C |
| M80-335, M80-336, M80-337, M80-PM5 |
| M80-338, M80-339 |

LINE UP TOOL WITH
RETENTION FEATURE
AND INSERT TO RELEASE
CONTACT FROM MOULDING



TAKE CARE TO ENSURE TOOL
IS INSERTED OUTSIDE
OF CONTACT



| | | | |
|------------------|------|----------|--------|
| MGP | 5 | 20.04.20 | 21933 |
| NAME | ISS. | DATE | C/NOTE |
| APPROVED: MGP | | | |
| CHECKED: RP | | | |
| DRAWN: J BROOKES | | | |
| CUSTOMER REF.: | | | |
| ASSEMBLY DRG: | | | |

HARWIN

www.harwin.com
technical@harwin.com

THIS DRAWING AND ANY
INFORMATION OR DESCRIPTIVE
MATTER SET OUT HEREON ARE
CONFIDENTIAL AND COPYRIGHT
PROPERTY OF THE HARWIN
GROUP AND MUST NOT BE
DISCLOSED, LOANED, COPIED
OR USED FOR MANUFACTURING,
TENDERING OR FOR ANY
OTHER PURPOSE WITHOUT
THEIR WRITTEN PERMISSION.

TOLERANCES

X. = $\pm 1\text{mm}$
X.X = $\pm 0.50\text{mm}$
X.XX = $\pm 0.20\text{mm}$
X.XXX = $\pm 0.01\text{mm}$

ANGLES = $\pm 5^\circ$

UNLESS STATED

MATERIAL:

TOOL = STAINLESS STEEL
CAP = BLACK NYLON

FINISH:

S/AREA:

mm²

TITLE:

MIX TEK SPECIAL CONTACT
REMOVAL TOOL

DRAWING NUMBER:

Z80-290

SHT
2
OF
2

Mouser Electronics

Authorized Distributor

Click to View Pricing, Inventory, Delivery & Lifecycle Information:

[Harwin:](#)

[Z80-290](#)