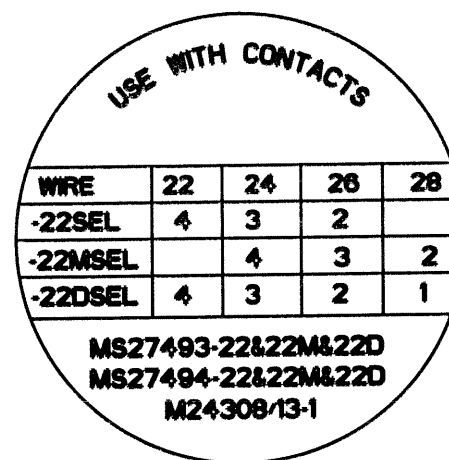
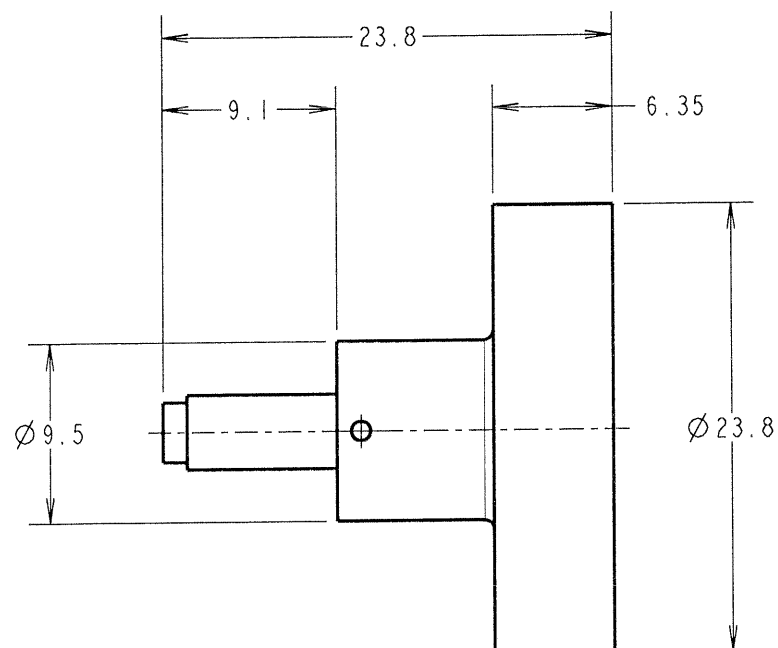


DATAPLATE



JMB	1	13.12.06	----
NAME	ISS.	DATE	C/NOTE
APPROVED: <i>JMB</i>			
CHECKED: <i>[Signature]</i>			
DRAWN: JM BROOKES			
CUSTOMER REF.:			
ASSEMBLY DRG:			

**HARWIN**

HARWIN USA  
TEL: 603 893 5376  
FAX: 603 893 5396  
mis@harwin.com

HARWIN Europe (UK)  
TEL: 023 9231 4545  
FAX: 023 9231 4590  
mis@harwin.co.uk

HARWIN Asia  
TEL: +65 6 779 4909  
FAX: +65 6 779 3868  
mis@harwin.com.sg

THIS DRAWING AND ANY INFORMATION OR DESCRIPTIVE MATTER SET OUT HEREON ARE CONFIDENTIAL AND COPYRIGHT PROPERTY OF THE HARWIN GROUP AND MUST NOT BE DISCLOSED, LOANED, COPIED OR USED FOR MANUFACTURING, TENDERING OR FOR ANY OTHER PURPOSE WITHOUT THEIR WRITTEN PERMISSION.

## TOLERANCES

X. =  $\pm 1\text{mm}$   
X.X =  $\pm 0.25\text{mm}$   
X.XX =  $\pm 0.10\text{mm}$   
X.XXX =  $\pm 0.01\text{mm}$

ANGLES =  $\pm 5^\circ$ 

UNLESS STATED

## MATERIAL:

FINISH:

S/AREA:

mm<sup>2</sup>

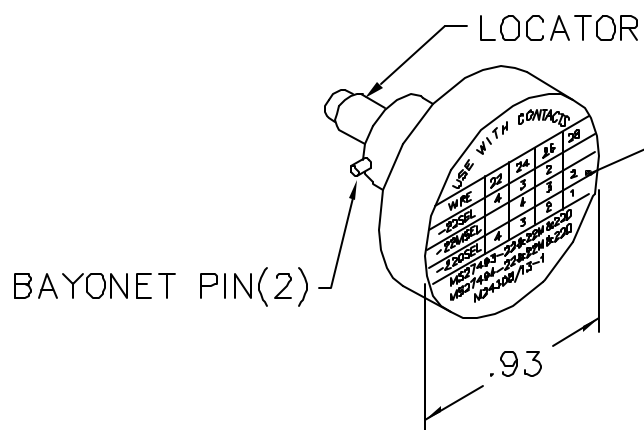
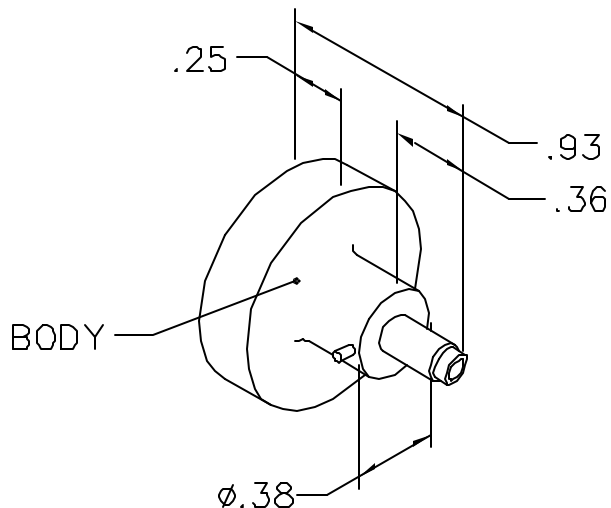
## TITLE:

CRIMP POSITIONER  
M22520/2-09 (K42)

DRAWING NUMBER:

Z108513C

SHT  
1 OF 1



REVISIONS				
REV. SYM.	E.C.D. NUMBER	DESCRIPTION	BY DATE	APP'D DATE
3		CORRECTED P/N M24308/13-1	AAM 9-6-02	RRR 9-6-02

**UNCONTROLLED DOCUMENT  
WILL NOT BE UPDATED**

USE WITH CONTACTS				
WIRE	22	24	26	28
-22SEL	4	3	2	
-22MSEL		4	3	2
-22DSEL	4	3	2	1
MS27493-22&22M&22D				
MS27494-22&22M&22D				
M24308/13-1				

NOTE: FOR USE WITH DANIELS CRIMP TOOLS  
ACCOMMODATING "K" SERIES POSITIONERS

LOCATOR	
HOLE DIMENSIONS	ADDITIONAL FEATURES
$\varnothing .033$ $\nabla .58 \text{ MIN.}$	$\sqcup \varnothing .078$ $\nabla .155$

# RESTRICTED & CONFIDENTIAL

CONFIDENTIAL PROPERTY OF DANIELS MANUFACTURING CORP. NOT TO BE DISCLOSED TO OTHERS, REPRODUCED OR USED FOR ANY OTHER PURPOSE, EXCEPT AS AUTHORIZED IN WRITING BY DANIELS MANUFACTURING. MUST BE RETURNED TO DANIELS MANUFACTURING CORP. ON COMPLETION OF ORDER OR OTHER PURPOSE FOR WHICH LENT.

DO NOT SCALE DRAWING

DRN.	KS	DATE
CHK'D.	DC	DATE
APP'D.	AAM	DATE
APP'D.		DATE



DANIELS MANUFACTURING CORP.  
ORLANDO, FLORIDA  
CAGE 11851

TITLE  
**ENVELOPE DRAWING  
POSITIONER**

WHERE USED: AFM8

SIZE A	SCALE NTS	CAD P/N K42-ENV	SHEET 1	OF 1
POSTING		P/N K42-ENV	REV. 3	

# Mouser Electronics

Authorized Distributor

Click to View Pricing, Inventory, Delivery & Lifecycle Information:

[Harwin:](#)

[Z108512C](#) [Z108513C](#)