

Customer Information Sheet

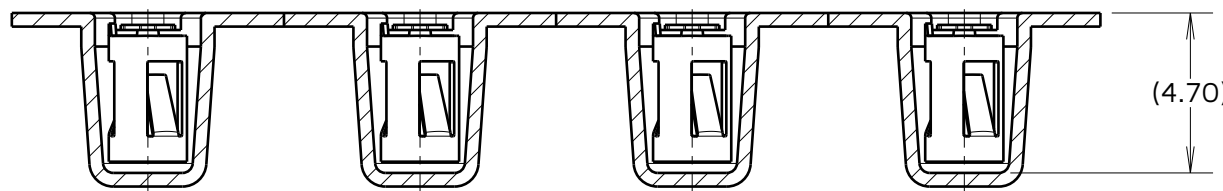
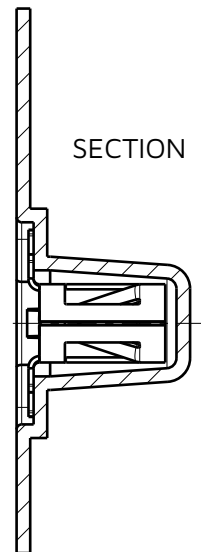
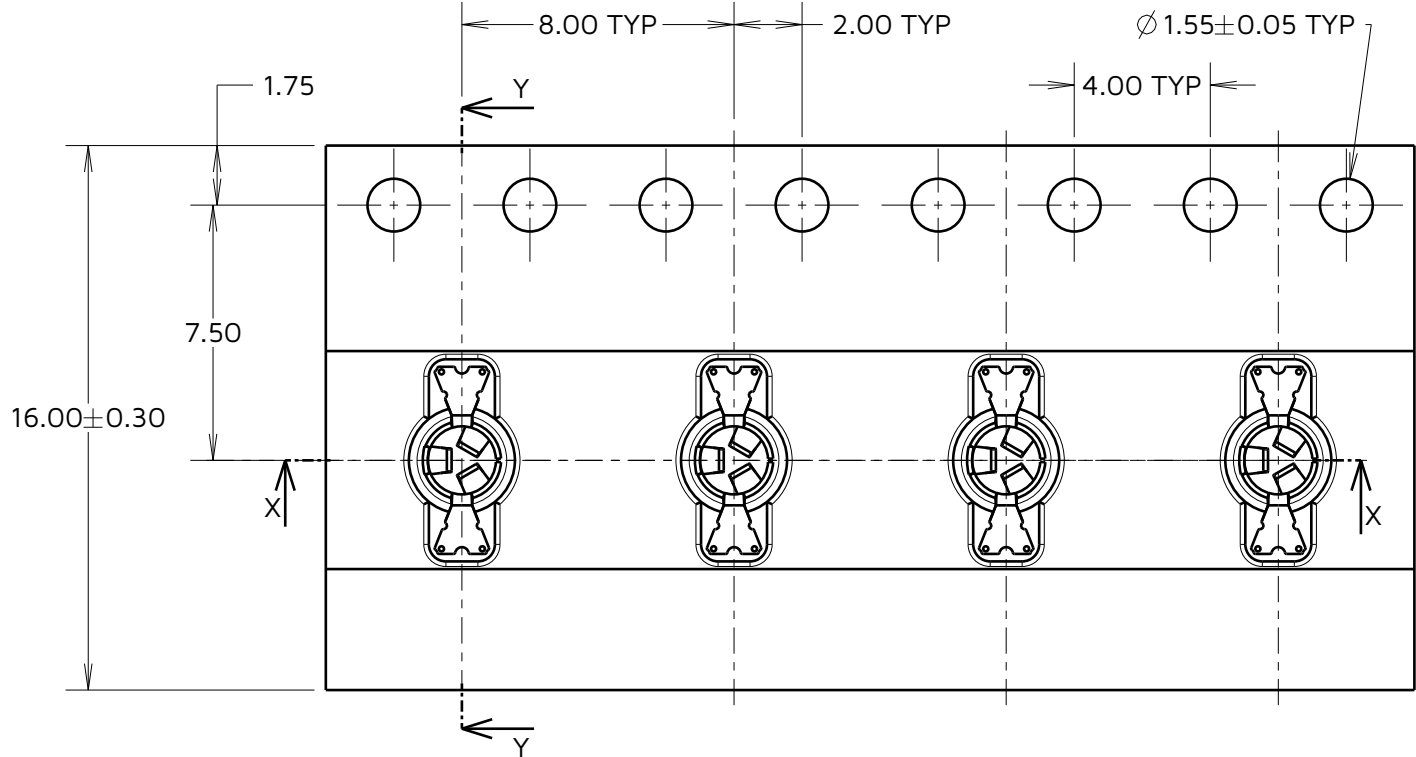
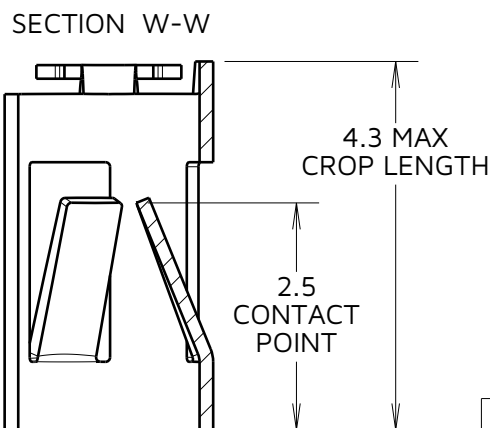
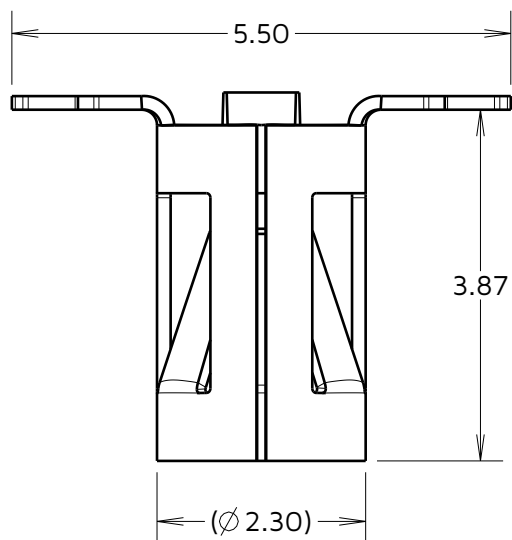
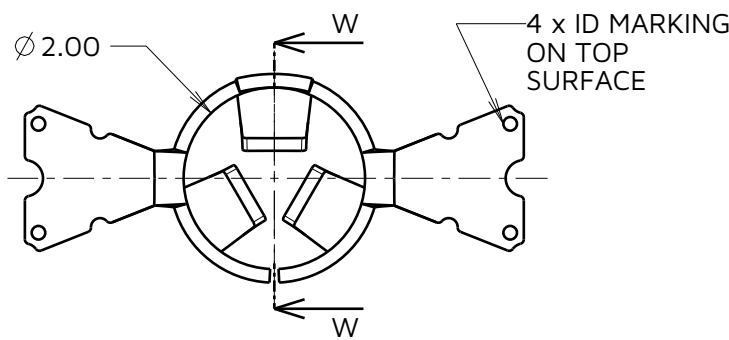
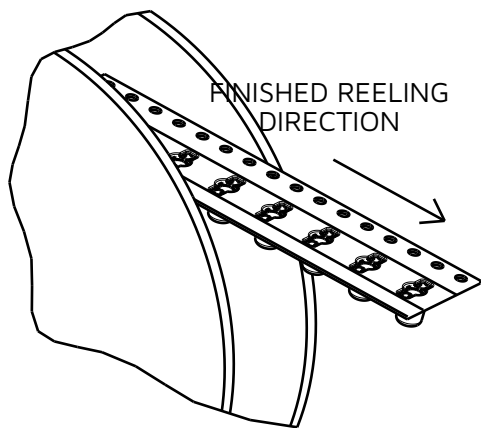
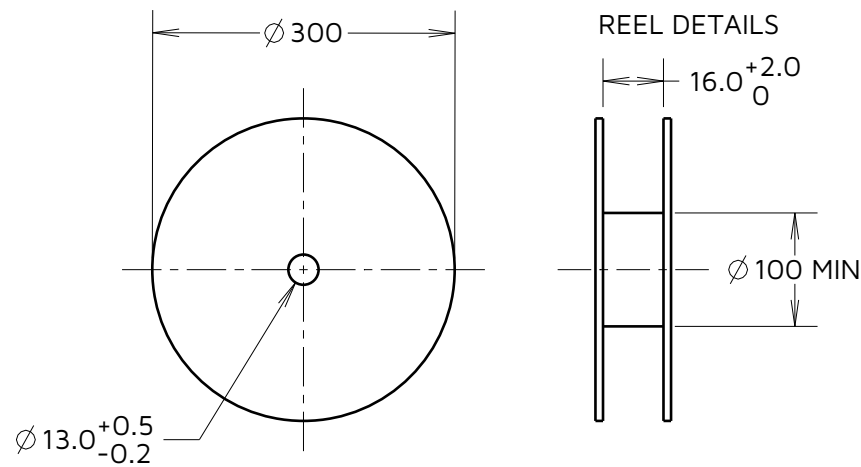
IF IN DOUBT - ASK

©

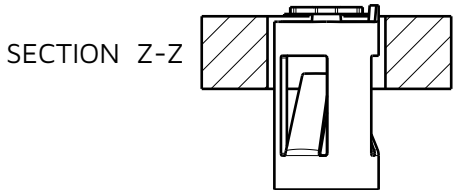
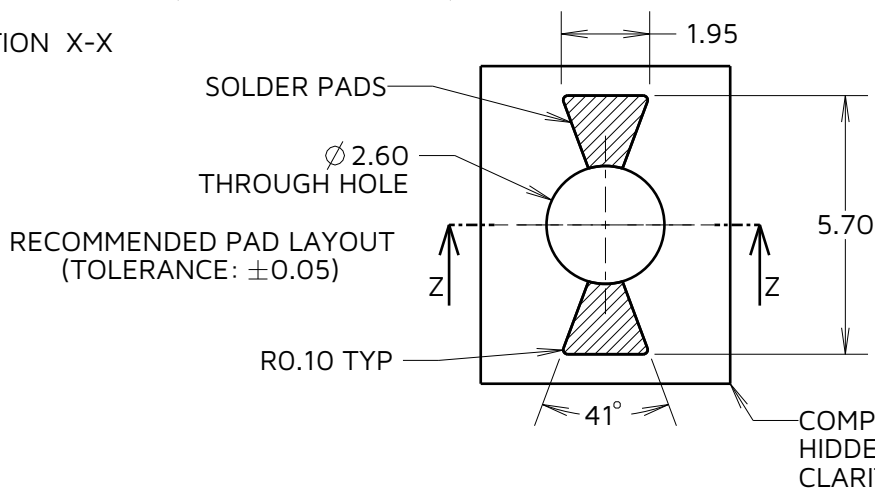
NOT TO SCALE

THIRD ANGLE PROJECTION

ALL DIMENSIONS IN mm



SECTION X-X



SECTION Z-Z

COMPONENT SPECIFICATION
MATERIAL = BERYLLIUM COPPER
FINISH = GOLD OVER NICKEL
ELECTRICAL:
CURRENT RATING = 6A
CONTACT RESISTANCE = 15m Ω MAX
MECHANICAL:
MAX INSERTION FORCE:
 $\varnothing 0.80$ mm PIN = 3.0N
 $\varnothing 1.30$ mm PIN = 6.0N
MIN WITHDRAWAL FORCE:
 $\varnothing 0.80$ mm PIN = 0.3N
 $\varnothing 1.30$ mm PIN = 0.6N
DURABILITY = 500 CYCLES
ENVIRONMENTAL:
OPERATING TEMPERATURE = -50°C TO +125°C

NOTES:
1. QUANTITY OF COMPONENTS PER REEL = 1400.
2. THIS PRODUCT IS TAPED AND REELED IN GENERAL ACCORDANCE WITH EIA-481-2 (ELECTRONICS INDUSTRIES ASSOCIATION).

HARWIN

www.harwin.com

TOLERANCES
X. = ± 1 mm
X.X = ± 0.50 mm
X.XX = ± 0.20 mm
X.XXX = ± 0.01 mm
ANGLES = $\pm 5^\circ$
UNLESS STATED

THIS DRAWING AND ANY INFORMATION OR DESCRIPTIVE MATTER SET OUT HEREON ARE CONFIDENTIAL AND COPYRIGHT PROPERTY OF THE HARWIN GROUP AND MUST NOT BE DISCLOSED, LOANED, COPIED OR USED FOR MANUFACTURING, TENDERING OR FOR ANY OTHER PURPOSE WITHOUT THEIR WRITTEN PERMISSION.

MATERIAL:
SEE ABOVE
SEE ABOVE

TITLE: SYCAMORE CONTACT
 $\varnothing 1.00$ mm BOTTOM ENTRY
SOCKET IN TAPE & REEL

DRAWING NUMBER:
S9141-45R

RTP	8	29.05.24	34137
NAME	ISS.	DATE	CN/CO
APPROVED:	R.PORTLOCK		
CHECKED:	A.YEOMANS		
DRAWN:	S.BENNETT		
ASSEMBLY DRG:			

SHT
2
OF
2

Mouser Electronics

Authorized Distributor

Click to View Pricing, Inventory, Delivery & Lifecycle Information:

[Harwin:](#)

[S9141-45R](#)