

# Customer Information Sheet

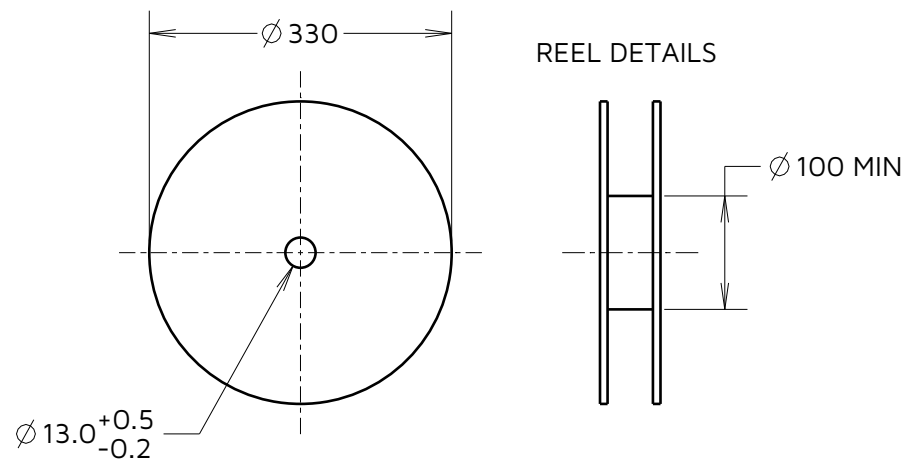
IF IN DOUBT - ASK

©

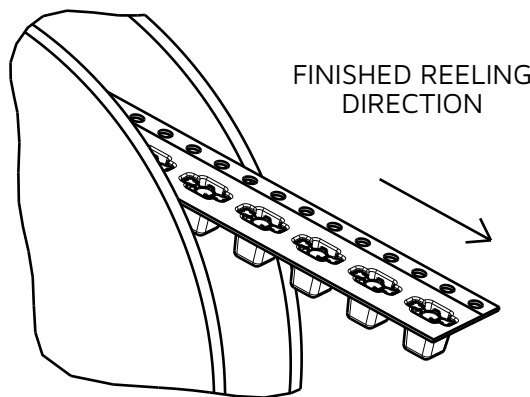
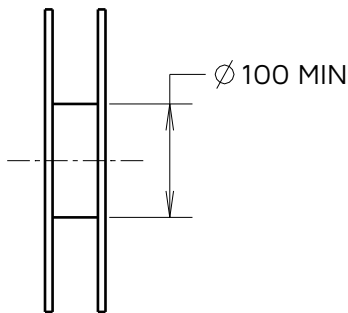
NOT TO SCALE

THIRD ANGLE PROJECTION

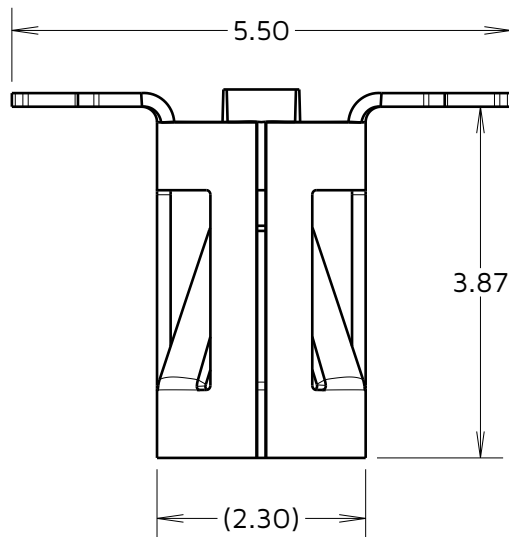
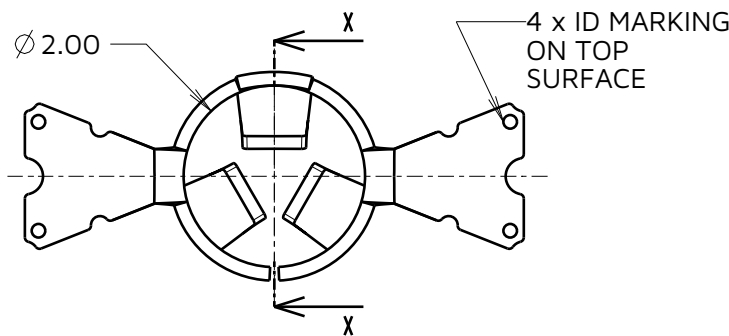
ALL DIMENSIONS IN mm



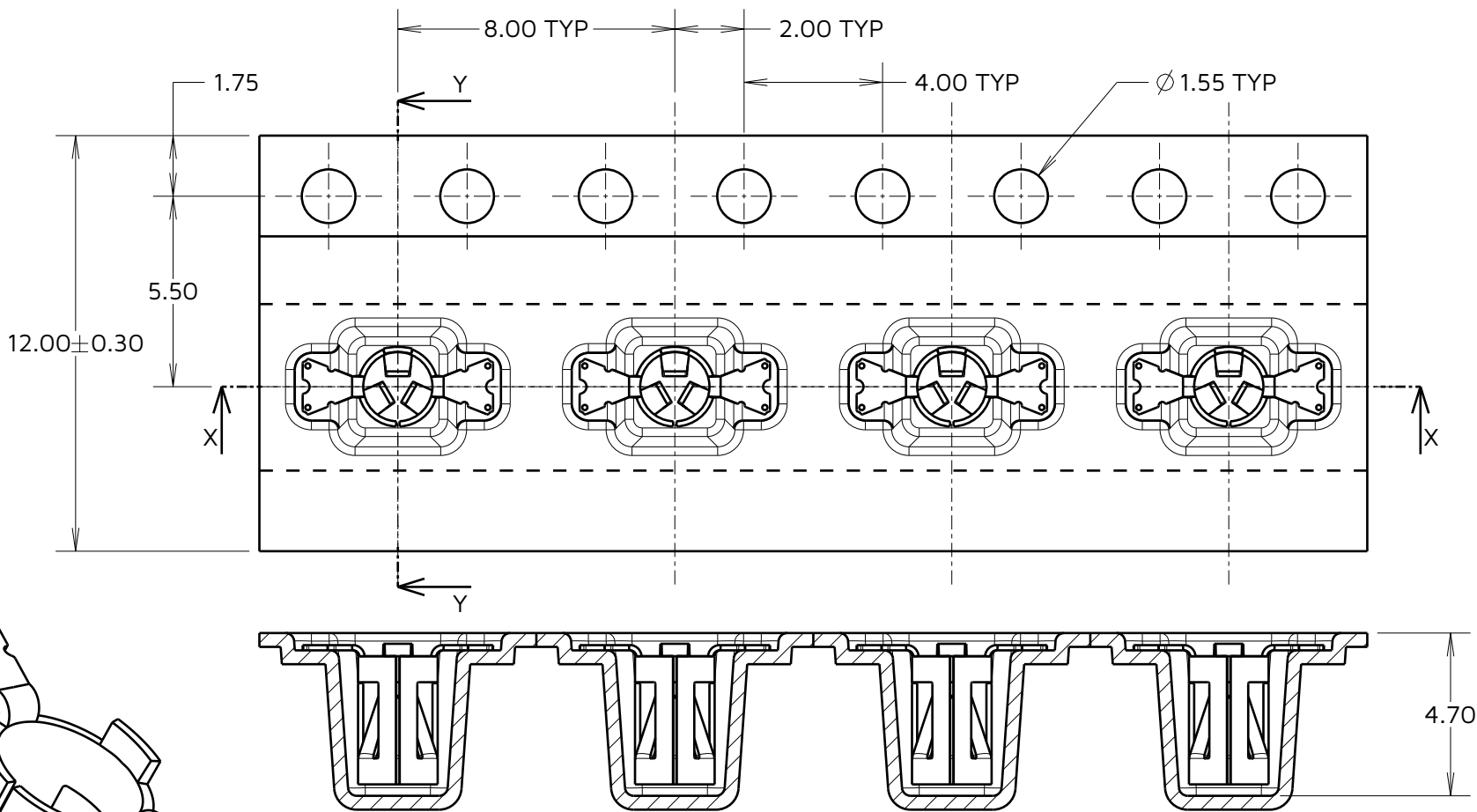
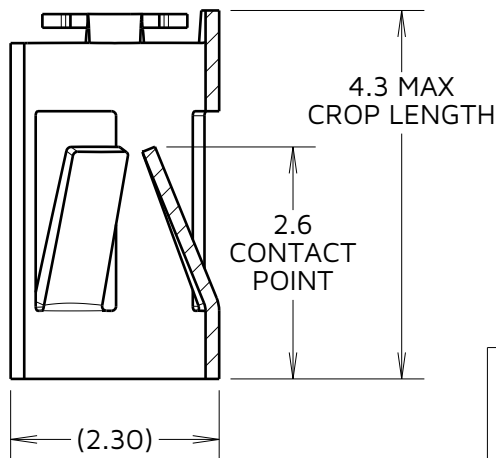
REEL DETAILS



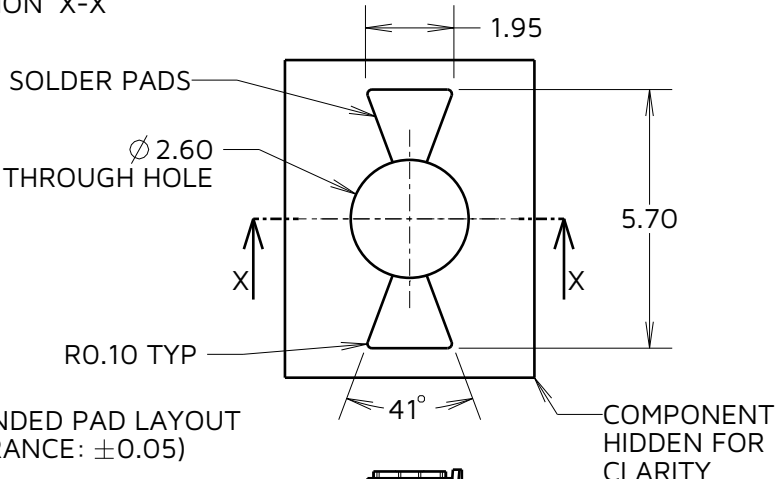
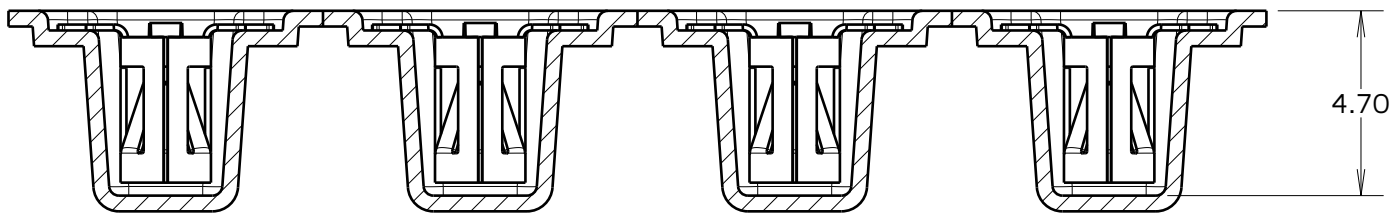
FINISHED REELING DIRECTION



SECTION X-X

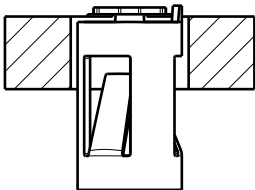


SECTION X-X



RECOMMENDED PAD LAYOUT (TOLERANCE: ±0.05)

SECTION X-X



COMPONENT SPECIFICATION  
MATERIAL = BERYLLIUM COPPER  
FINISH = 0.10µm - 0.17µm GOLD OVER  
1.0µm MIN NICKEL

ELECTRICAL:  
CURRENT RATING = 6A  
CONTACT RESISTANCE = 15mΩ MAX  
MECHANICAL:

MAX INSERTION FORCE:  
Ø 0.80mm PIN = 3.0N  
Ø 1.30mm PIN = 6.0N  
MIN WITHDRAWAL FORCE:  
Ø 0.80mm PIN = 0.3N  
Ø 1.30mm PIN = 0.6N

DURABILITY = 500 CYCLES  
ENVIRONMENTAL:  
OPERATING TEMPERATURE = -50°C TO +125°C

NOTES:  
1. QUANTITY OF COMPONENTS PER REEL = 1400.  
2. THIS PRODUCT IS TAPED AND REELED IN GENERAL ACCORDANCE WITH EIA-481-2 (ELECTRONICS INDUSTRIES ASSOCIATION).

HARWIN

www.harwin.com

TOLERANCES

X. = ±1mm  
X.X = ±0.50mm  
X.XX = ±0.20mm  
X.XXX = ±0.01mm  
ANGLES = ±5°  
UNLESS STATED

THIS DRAWING AND ANY INFORMATION OR DESCRIPTIVE MATTER SET OUT HEREON ARE CONFIDENTIAL AND COPYRIGHT PROPERTY OF THE HARWIN GROUP AND MUST NOT BE DISCLOSED, LOANED, COPIED OR USED FOR MANUFACTURING, TENDERING OR FOR ANY OTHER PURPOSE WITHOUT THEIR WRITTEN PERMISSION.

MATERIAL:

SEE ABOVE

SEE ABOVE

TITLE: SYCAMORE CONTACT  
Ø 1.00mm BOTTOM ENTRY  
SOCKET IN TAPE & REEL

DRAWING NUMBER:  
S9141-45R

SHT  
2 OF 2

RTP	7	22.06.23	31401
NAME	ISS.	DATE	CN/CO
APPROVED:	R.PORTLOCK		
CHECKED:	A.BOXALL		
DRAWN:	S.BENNETT		
ASSEMBLY DRG:			

# Mouser Electronics

Authorized Distributor

Click to View Pricing, Inventory, Delivery & Lifecycle Information:

Harwin:

S9141-45R