

Customer Information Sheet

DRAWING No.: S9121-45R

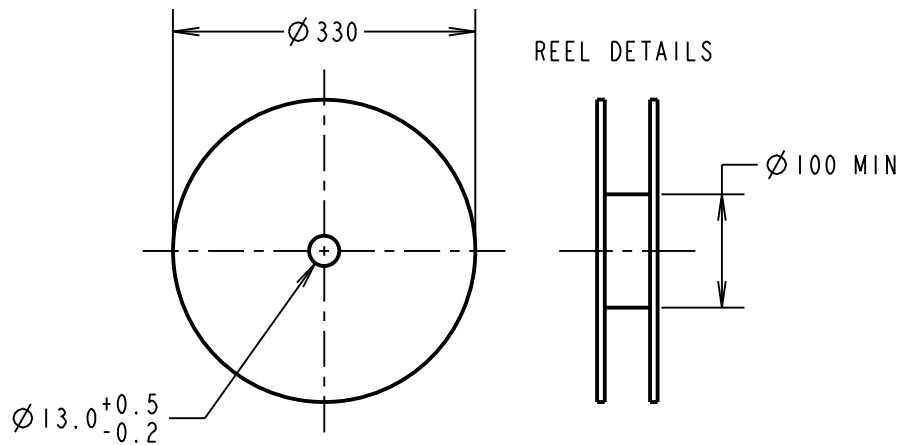
IF IN DOUBT - ASK

©

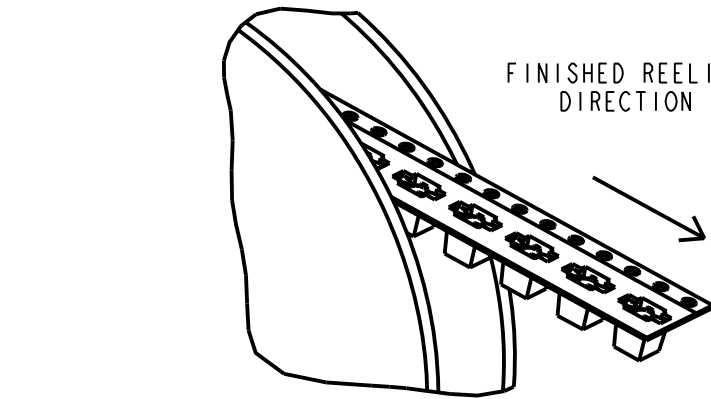
NOT TO SCALE

THIRD ANGLE PROJECTION

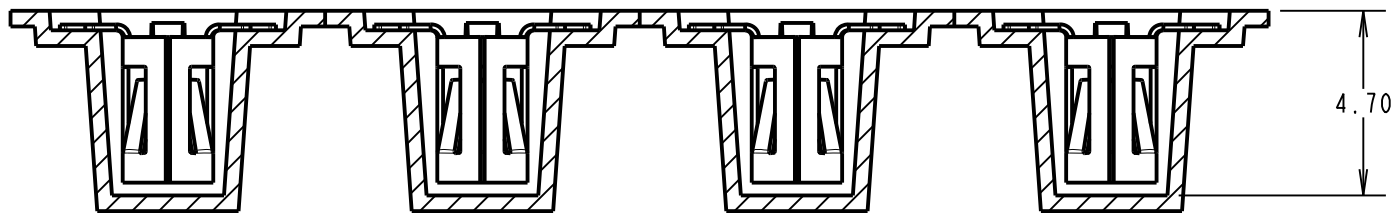
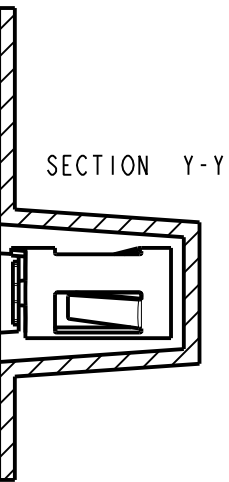
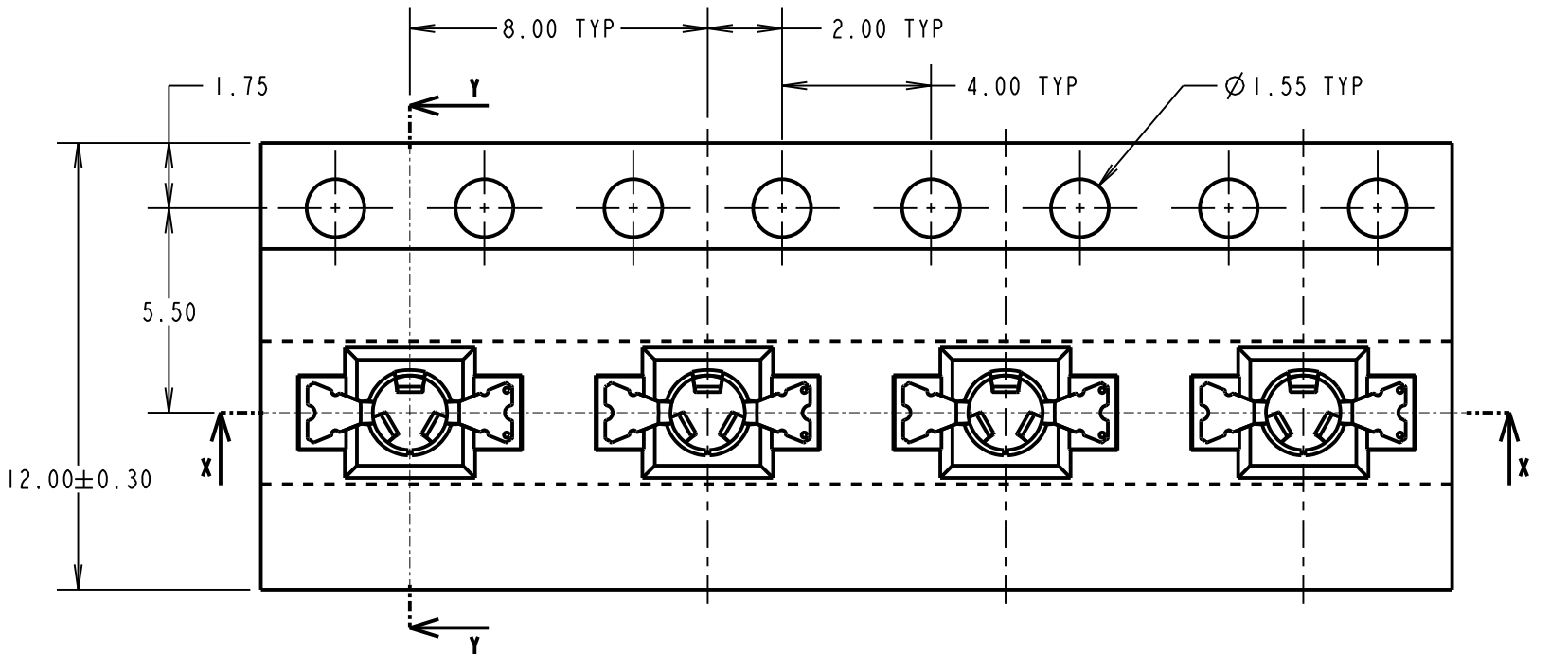
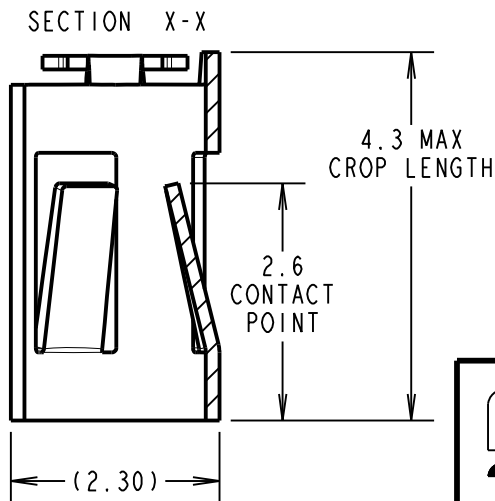
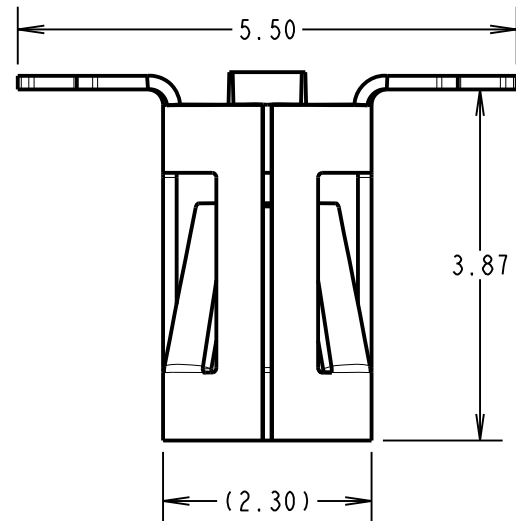
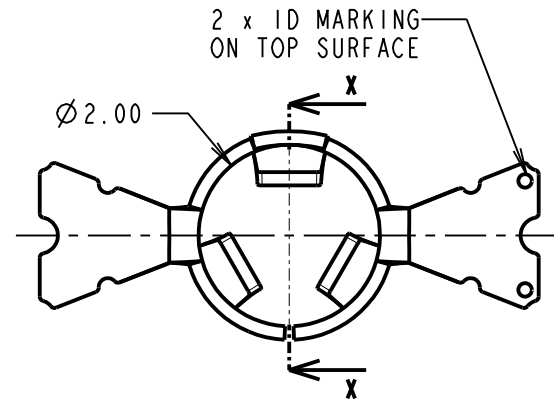
ALL DIMENSIONS IN mm



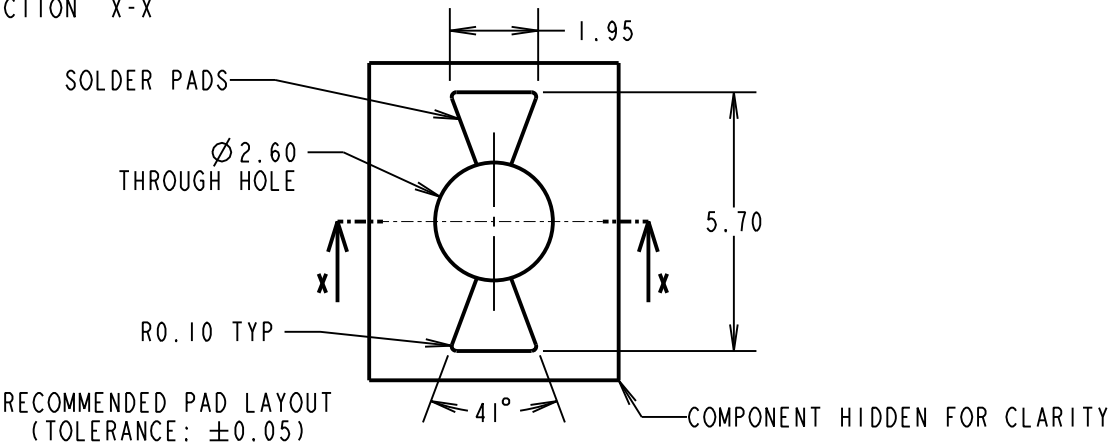
REEL DETAILS



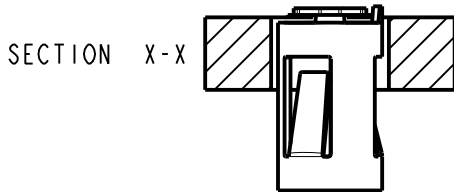
FINISHED REELING DIRECTION



SECTION X-X



RECOMMENDED PAD LAYOUT (TOLERANCE: ±0.05)



SECTION X-X

COMPONENT SPECIFICATION
MATERIAL = BERYLLIUM COPPER
FINISH = 0.10µm - 0.17µm GOLD OVER 1.0µm MIN NICKEL
ELECTRICAL:
CURRENT RATING = 6A
CONTACT RESISTANCE = 15mΩ MAX
MECHANICAL:
MAX INSERTION FORCE:
Ø1.50mm PIN = 3.5N
Ø1.90mm PIN = 17.0N
MIN WITHDRAWAL FORCE:
Ø1.50mm PIN = 0.5N
Ø1.90mm PIN = 1.0N
DURABILITY = 500 CYCLES
ENVIRONMENTAL:
OPERATING TEMPERATURE = -50°C TO +125°C

NOTES:
1. QUANTITY OF COMPONENTS PER REEL = 1400.
2. THIS PRODUCT IS TAPED AND REELED IN GENERAL ACCORDANCE WITH EIA-481-2 (ELECTRONICS INDUSTRIES ASSOCIATION).

RA	5	11.03.20	30020
NAME	ISS.	DATE	C/NOTE
APPROVED:		R.ALEXANDER	
CHECKED:		R.PORTLOCK	
DRAWN:		S.BENNETT	
CUSTOMER REF.:			
ASSEMBLY DRG:			

HARWIN

www.harwin.com
technical@harwin.com

THIS DRAWING AND ANY INFORMATION OR DESCRIPTIVE MATTER SET OUT HEREON ARE CONFIDENTIAL AND COPYRIGHT PROPERTY OF THE HARWIN GROUP AND MUST NOT BE DISCLOSED, LOANED, COPIED OR USED FOR MANUFACTURING, TENDERING OR FOR ANY OTHER PURPOSE WITHOUT THEIR WRITTEN PERMISSION.

TOLERANCES
X. = ±1mm
X.X = ±0.50mm
X.XX = ±0.20mm
X.XXX = ±0.01mm
ANGLES = ±5°
UNLESS STATED

MATERIAL:
SEE ABOVE
FINISH: SEE ABOVE
S/AREA: mm²

TITLE: SYCAMORE CONTACT
Ø1.50mm BOTTOM ENTRY SOCKET IN TAPE & REEL
DRAWING NUMBER: S9121-45R
SHT 2 OF 2

Mouser Electronics

Authorized Distributor

Click to View Pricing, Inventory, Delivery & Lifecycle Information:

Harwin:

S9121-45R