

Customer Information Sheet

DRAWING No.: S9101-46R

IF IN DOUBT - ASK

©

NOT TO SCALE

THIRD ANGLE PROJECTION

ALL DIMENSIONS IN mm

- NOTES:
- 1. QUANTITY OF COMPONENTS PER REEL = 800.
 - 2. TAPE MUST HAVE A MINIMUM OF 400mm LEADER AND A MINIMUM OF 160mm TRAILER.
 - 3. THIS PRODUCT IS TAPED AND REELED IN GENERAL ACCORDANCE WITH EIA-481-2 (ELECTRONICS INDUSTRIES ASSOCIATION).
 - 4. RECOMMENDED MINIMUM PIN SIZE IS $\varnothing 1.10$ OR 1.10 SQUARE. RECOMMENDED MAXIMUM PIN SIZE IS $\varnothing 1.80$ OR 1.40 SQUARE. MATING PIN SHOULD HAVE 30° LEAD IN CHAMFER WITH MAXIMUM STARTING DIAMETER OF $\varnothing 1.10$.

COMPONENT SPECIFICATION:

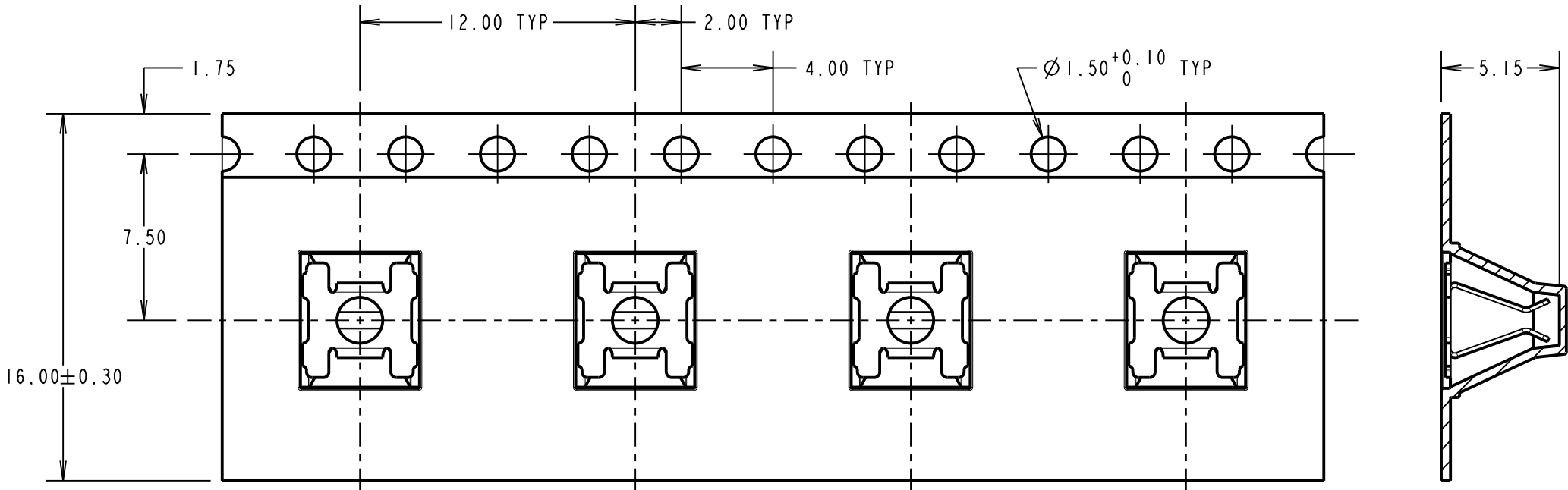
MATERIAL:
PHOSPHOR BRONZE

FINISH:
 $4.0\mu\text{m}$ MIN 100% TIN OVER $2.0\mu\text{m}$ MIN NICKEL

ELECTRICAL:
CURRENT RATING = 9A MAX WITH A $\varnothing 1.10\text{mm}$ PIN
CONTACT RESISTANCE (BEFORE CYCLING) = $2.67\text{m}\Omega$
CONTACT RESISTANCE (50 CYCLES) = $2.67\text{m}\Omega$
DURABILITY = 100 OPERATIONS

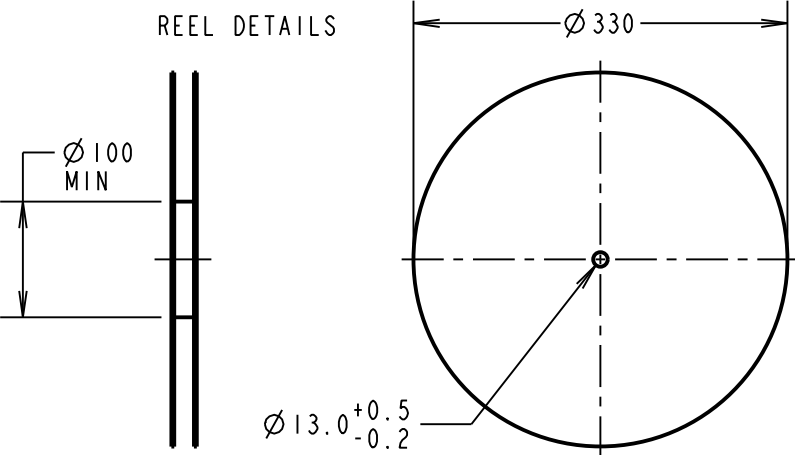
MECHANICAL:
MAX INSERTION FORCE WITH $\varnothing 1.10\text{mm}$ PIN = 2.8N
MAX INSERTION FORCE WITH $\varnothing 1.80\text{mm}$ PIN = 6.0N
MIN WITHDRAWAL FORCE WITH $\varnothing 1.10\text{mm}$ PIN = 0.3N
MIN WITHDRAWAL FORCE WITH $\varnothing 1.80\text{mm}$ PIN = 0.5N

ENVIRONMENTAL:
OPERATING TEMPERATURE = -40°C TO $+105^\circ\text{C}$
FOR COMPLETE SPECIFICATION, SEE HARWIN
TEST REPORT SUMMARY HT007XX (LATEST ISSUE).

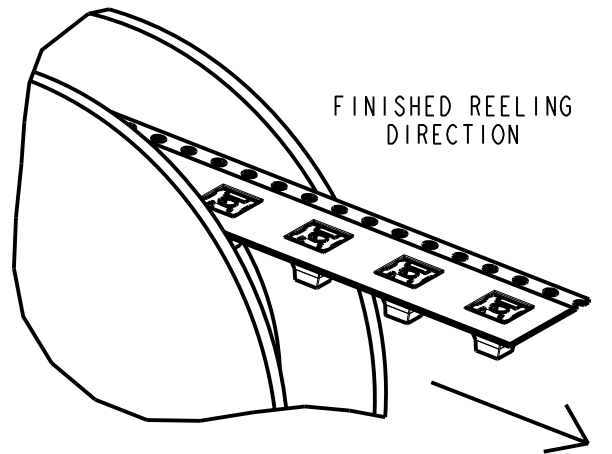


SECTION X-X

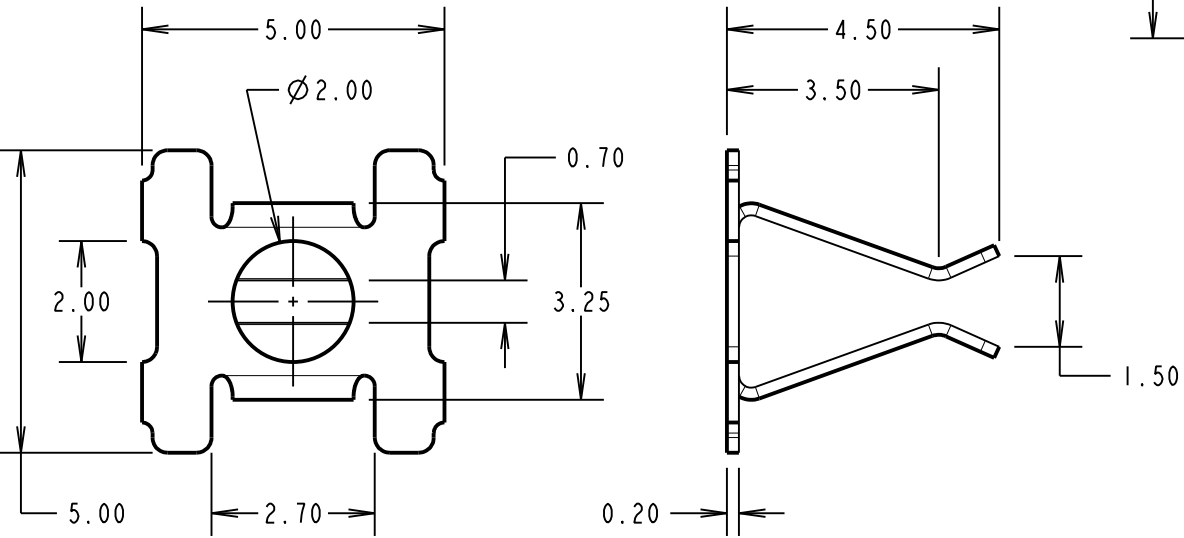
REEL DETAILS



RECOMMENDED PCB PAD LAYOUT
(TOLERANCE = ± 0.05)

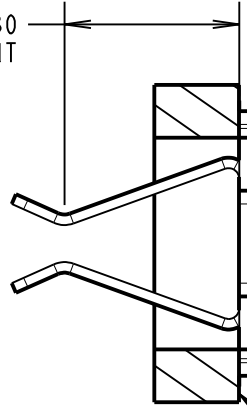


FINISHED REELING
DIRECTION

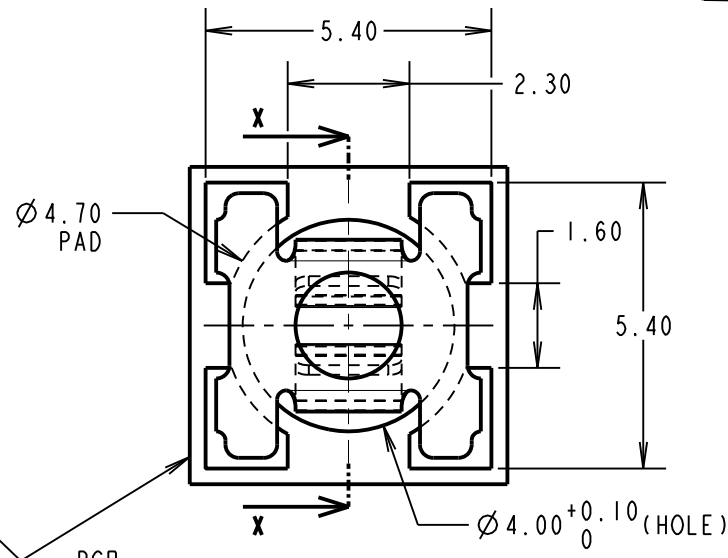


COMPONENT DIMENSIONS

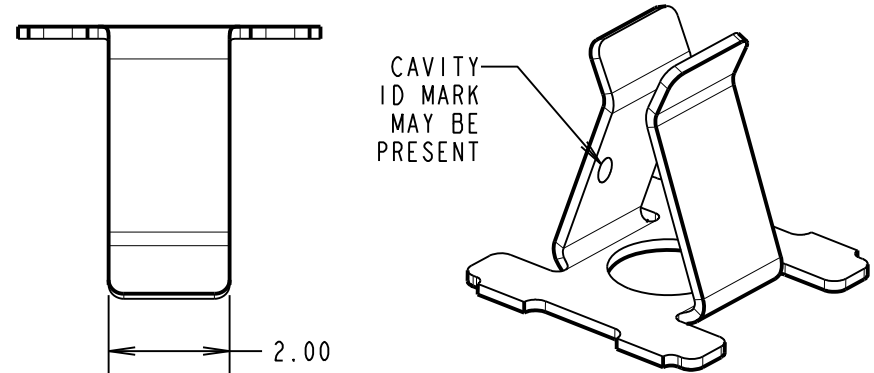
CONTACT POINT



SECTION X-X



PCB



CAVITY
ID MARK
MAY BE
PRESENT

HARWIN

www.harwin.com
technical@harwin.com

THIS DRAWING AND ANY
INFORMATION OR DESCRIPTIVE
MATTER SET OUT HEREON ARE
CONFIDENTIAL AND COPYRIGHT
PROPERTY OF THE HARWIN
GROUP AND MUST NOT BE
DISCLOSED, LOANED, COPIED
OR USED FOR MANUFACTURING,
TENDERING OR FOR ANY
OTHER PURPOSE WITHOUT
THEIR WRITTEN PERMISSION.

TOLERANCES
X. = $\pm 1\text{mm}$
X.X = $\pm 0.50\text{mm}$
X.XX = $\pm 0.20\text{mm}$
X.XXX = $\pm 0.01\text{mm}$
ANGLES = $\pm 5^\circ$
UNLESS STATED

MATERIAL:

SEE ABOVE

FINISH:

SEE ABOVE

S/AREA:

mm²

TITLE:

SMT CONTACT CLIP
IN TAPE & REEL

DRAWING NUMBER:

S9101-46R

MGP	8	26.02.19	21744
NAME	ISS.	DATE	C/NOTE
APPROVED: MGP			
CHECKED: SB			
DRAWN: S.FLOWER			
CUSTOMER REF.:			
ASSEMBLY DRG:			

Mouser Electronics

Authorized Distributor

Click to View Pricing, Inventory, Delivery & Lifecycle Information:

Harwin:

S9101-46R