

# Customer Information Sheet

DRAWING No.: S8401-46

SHEET 2 OF 2

IF IN DOUBT - ASK

(C)

NOT TO SCALE

THIRD ANGLE PROJECTION

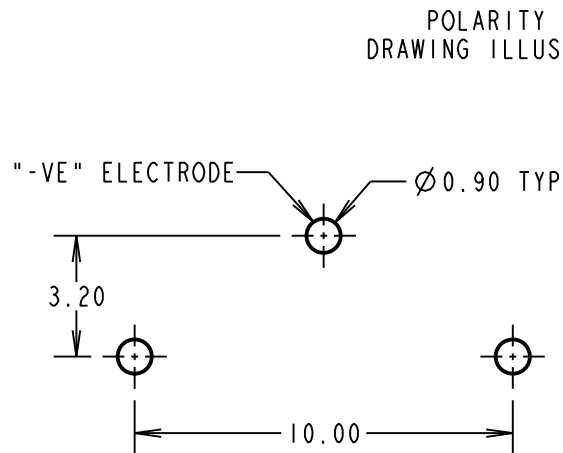
ALL DIMENSIONS IN mm

**SPECIFICATIONS:**

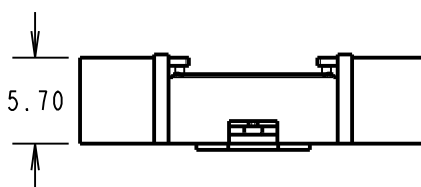
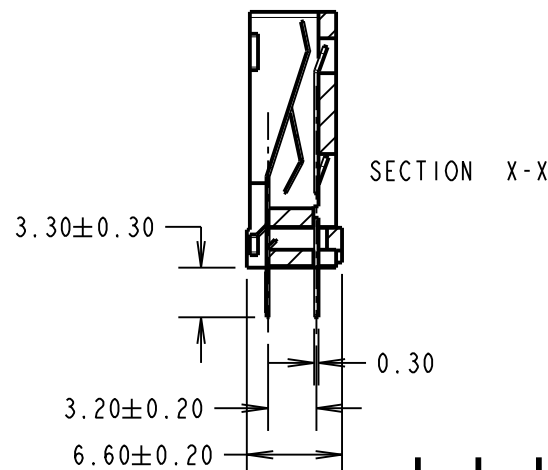
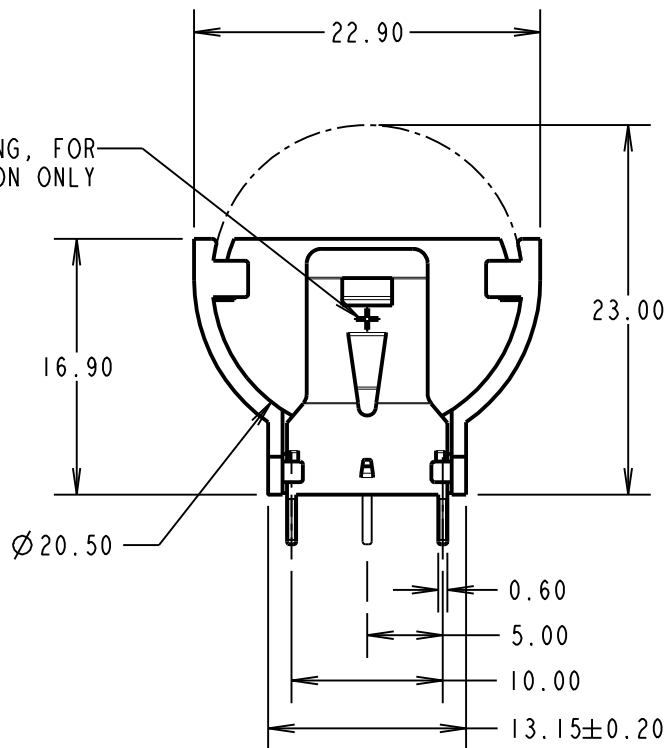
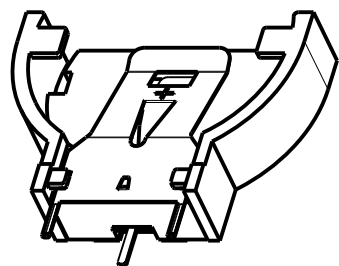
MOULDING:  
 NYLON 46 G/F, UL94V-0, BLACK  
 CONTACT:  
 PHOSPHOR BRONZE  
 FINISH:  
 100% TIN OVER NICKEL

**NOTES:**

- SUITABLE FOR THE FOLLOWING COIN CELLS  
 CR2032 & BR2032.
- ALL TOLERANCES ARE  $\pm 0.25$  UNLESS OTHERWISE STATED.
- PRODUCT IS PACKED IN TAPE AND REEL,  
 300 PER REEL. THIS PRODUCT IS NOT SUITABLE  
 FOR PICK AND PLACE ASSEMBLY.



RECOMMENDED PCB LAYOUT  
 (TOLERANCE  $\pm 0.05$ )



|                |      |           |        |
|----------------|------|-----------|--------|
| MSP            | 6    | 03.10.16  | 20125  |
| NAME           | ISS. | DATE      | C/NOTE |
| APPROVED:      |      | M.PERREN  |        |
| CHECKED:       |      | S.BENNETT |        |
| DRAWN:         |      | R.ADDE    |        |
| CUSTOMER REF.: |      |           |        |
| ASSEMBLY DRG.: |      |           |        |

**HARWIN**

www.harwin.com  
 technical@harwin.com

THIS DRAWING AND ANY INFORMATION OR DESCRIPTIVE MATTER SET OUT HEREON ARE CONFIDENTIAL AND COPYRIGHT PROPERTY OF THE HARWIN GROUP AND MUST NOT BE DISCLOSED, LOANED, COPIED OR USED FOR MANUFACTURING, TENDERING OR FOR ANY OTHER PURPOSE WITHOUT THEIR WRITTEN PERMISSION.

**TOLERANCES**  
~~X =  $\pm 1$ mm  
 X.X =  $\pm 0.50$ mm  
 X.XX =  $\pm 0.10$ mm  
 X.XXX =  $\pm 0.01$ mm  
 ANGLES =  $\pm 5^\circ$   
 UNLESS STATED~~

MATERIAL:

SEE ABOVE

FINISH: SEE ABOVE

S/AREA:

mm<sup>2</sup>

TITLE:

VERTICAL THROUGH BOARD  
 BATTERY HOLDER

DRAWING NUMBER:

**S8401-46**

SHT  
 2 OF 2

# Mouser Electronics

Authorized Distributor

Click to View Pricing, Inventory, Delivery & Lifecycle Information:

[Harwin:](#)

[S8401-46](#)