

Customer Information Sheet

DRAWING No.: R6505-00 TO R6535-00

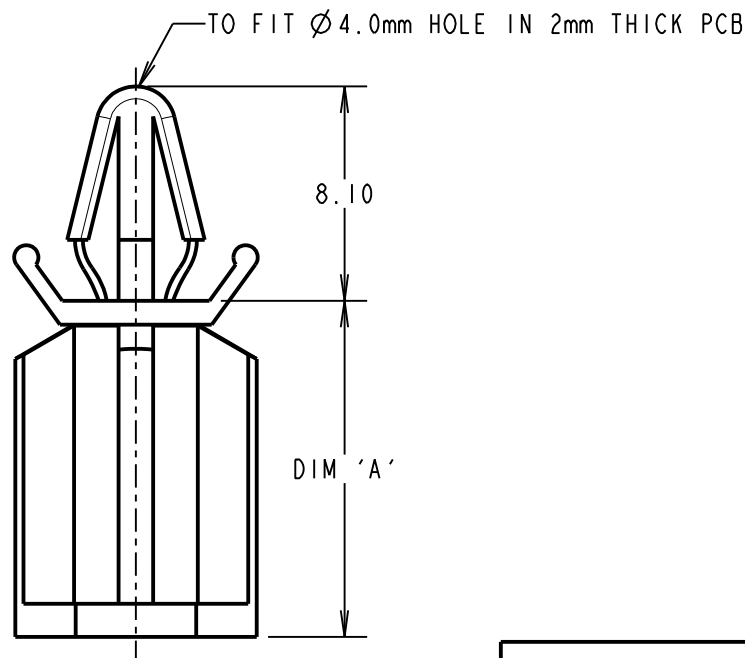
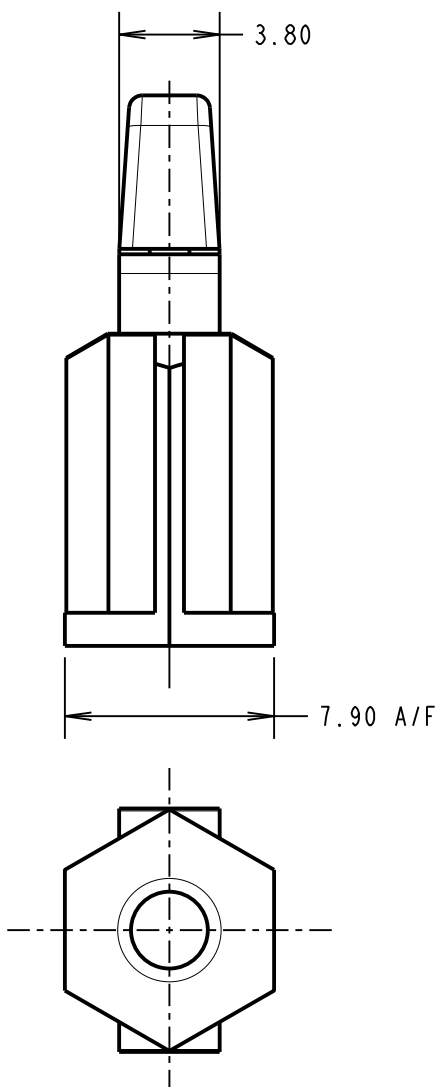
IF IN DOUBT - ASK

(C)

NOT TO SCALE

THIRD ANGLE PROJECTION

ALL DIMENSIONS IN mm



ORDER CODE: **R65XX-00**
HEIGHT CODE (SEE TABLE)

| PART No. | DIM 'A' |
|----------|---------|
| R6505-00 | 4.90 |
| R6510-00 | 9.60 |
| R6513-00 | 12.70 |
| R6519-00 | 19.10 |
| R6528-00 | 28.50 |
| R6535-00 | 35.00 |

| | | | |
|----------------|------|----------|-------|
| MGP | 7 | 02.08.21 | 30722 |
| NAME | ISS. | DATE | CN/CO |
| APPROVED: MGP | | | |
| CHECKED: MR | | | |
| DRAWN: D.BECK | | | |
| CUSTOMER REF.: | | | |
| ASSEMBLY DRG: | | | |

NOTES:

1. ALL TOLERANCES ARE ± 0.25 UNLESS OTHERWISE STATED.
2. TEMPERATURE RANGE = -40°C TO $+85^{\circ}\text{C}$.
3. HOLE TO FIT No. 6 (1/8" SCREW. RECOMMENDED MOUNTING HOLE IN PANEL FOR SCREW = $\varnothing 3.60\text{mm}$.

HARWIN

www.harwin.com
technical@harwin.com

THIS DRAWING AND ANY INFORMATION OR DESCRIPTIVE MATTER SET OUT HEREON ARE CONFIDENTIAL AND COPYRIGHT PROPERTY OF THE HARWIN GROUP AND MUST NOT BE DISCLOSED, LOANED, COPIED OR USED FOR MANUFACTURING, TENDERING OR FOR ANY OTHER PURPOSE WITHOUT THEIR WRITTEN PERMISSION.

~~TOLERANCES~~
~~X = $\pm 1\text{mm}$~~
~~X.X = $\pm 0.50\text{mm}$~~
~~X.XX = $\pm 0.20\text{mm}$~~
~~X.XXX = $\pm 0.01\text{mm}$~~
~~ANGLES = $\pm 5^{\circ}$~~
~~UNLESS STATED~~

MATERIAL:

NYLON 66 NATURAL UL94V-2

FINISH: CLEAN

S/AREA:

mm²

TITLE:

SELF LOCKING SPACER

DRAWING NUMBER:

R6505-00 TO R6535-00

SHT
2 OF 2

Mouser Electronics

Authorized Distributor

Click to View Pricing, Inventory, Delivery & Lifecycle Information:

Harwin:

[R6505-00](#) [R6513-00](#) [R6535-00](#) [R6510-00](#) [R6528-00](#) [R6519-00](#)