

Customer Information Sheet

DRAWING No.: R44-100XX02

SHEET 2 OF 2

IF IN DOUBT - ASK

(C)

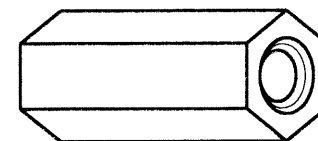
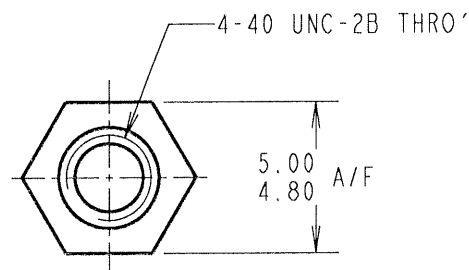
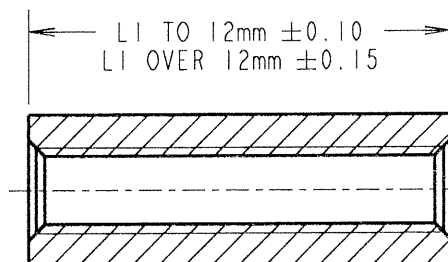
NOT TO SCALE

THIRD ANGLE PROJECTION

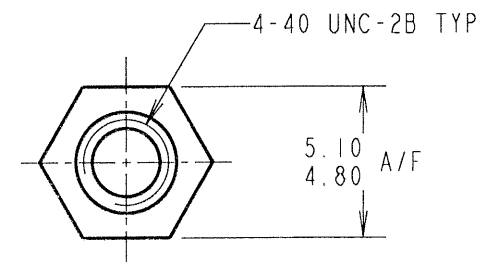
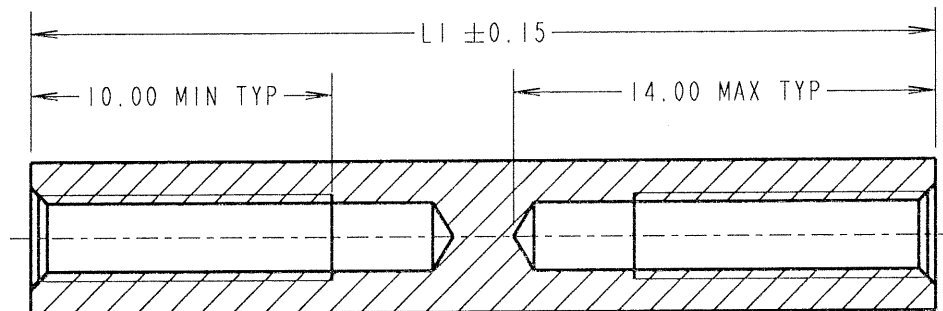
ALL DIMENSIONS IN mm

ALL SPACERS UP TO
& INCLUDING 28mm

22 TO 28mm SPACERS DO NOT HAVE
A THROUGH TAPPED HOLE, BUT
HAVE A MINIMUM THREAD LENGTH
OF 10mm FROM BOTH ENDS.



ALL SPACERS
OVER 28mm



| PART No. | LI |
|-------------|-------|
| R44-1000602 | 6.00 |
| R44-1000902 | 9.00 |
| R44-1001002 | 10.00 |
| R44-1001202 | 12.00 |
| R44-1001302 | 13.00 |

| PART No. | LI |
|-------------|-------|
| R44-1001502 | 15.00 |
| R44-1001602 | 16.00 |
| R44-1001902 | 19.00 |
| R44-1002202 | 22.00 |
| R44-1002302 | 23.00 |

| PART No. | LI |
|-------------|-------|
| R44-1002502 | 25.00 |
| R44-1003002 | 30.00 |
| R44-1003502 | 35.00 |
| R44-1004502 | 45.00 |
| R44-1005002 | 50.00 |

ORDER CODE:
R44-100XX02
LENGTH LI IN mm

| | | | |
|-----------------------------|------|----------|--------|
| JMB | 2 | 15.10.06 | 9512 |
| NAME | ISS. | DATE | C/NOTE |
| APPROVED: <i>JMB</i> | | | |
| CHECKED: <i>[Signature]</i> | | | |
| DRAWN: WJ BOURNE | | | |
| CUSTOMER REF.: | | | |
| ASSEMBLY DRG: | | | |

HARWIN

| | | |
|--|--|---|
| HARWIN INC U.S.A. TEL: (812) 542 2540 FAX: (812) 542 2541 | HARWIN PLC U.K. TEL: 023 9231 4545 FAX: 023 9231 4590 | HARWIN PTE SINGAPORE TEL: 65 6779 4909 FAX: 65 6779 3868 |
|--|--|---|

THIS DRAWING AND ANY
INFORMATION OR DESCRIPTIVE
MATTER SET OUT HEREON ARE
CONFIDENTIAL AND COPYRIGHT
PROPERTY OF THE HARWIN
GROUP AND MUST NOT BE
DISCLOSED, LOANED, COPIED
OR USED FOR MANUFACTURING,
TENDERING OR FOR ANY
OTHER PURPOSE WITHOUT
THEIR WRITTEN PERMISSION.

TOLERANCES
X. = ±1mm
X.X = ±0.25mm
X.XX = ±0.10mm
X.XXX = ±0.01mm
ANGLES = ±5°
UNLESS STATED

MATERIAL:
BRASS
CW614N M TO BS EN 12164
(CuZn39Pb3)
FINISH: NICKEL
S/AREA: mm²

TITLE:
4-40 UNC HEXAGONAL
FEMALE SPACER

DRAWING NUMBER:
R44-100XX02

SHT
2
OF
2

Mouser Electronics

Authorized Distributor

Click to View Pricing, Inventory, Delivery & Lifecycle Information:

Harwin:

[R44-1001902](#) [R44-1000902](#) [R44-1001302](#) [R44-1001002](#) [R44-1000602](#) [R44-1002202](#) [R44-1001202](#) [R44-1001602](#)
[R44-1001502](#) [R44-1002302](#)