

Customer Information Sheet

DRAWING No.: R30-100XX02

SHEET 2 OF 2

IF IN DOUBT - ASK

©

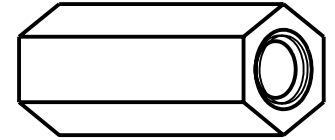
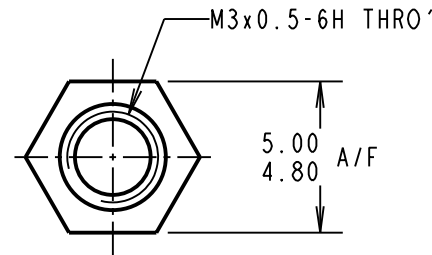
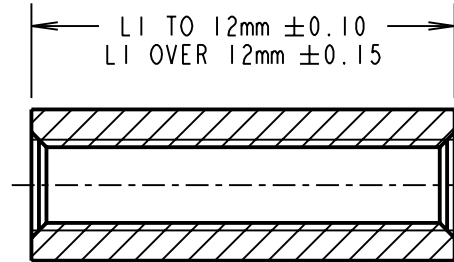
NOT TO SCALE

THIRD ANGLE PROJECTION

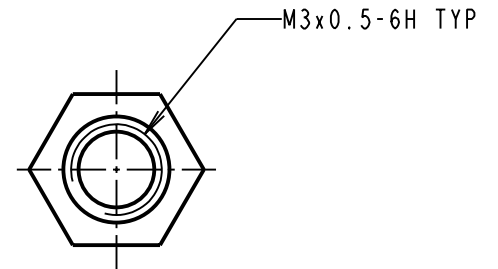
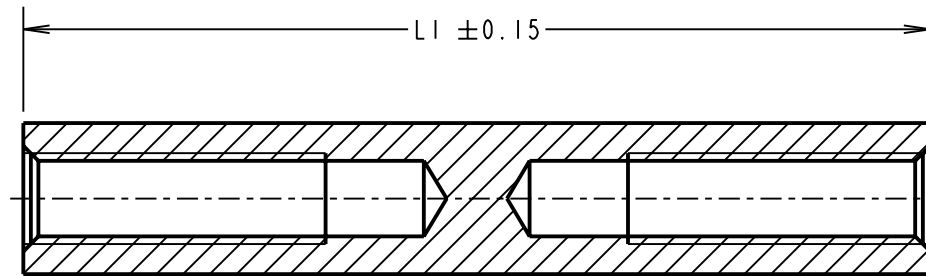
ALL DIMENSIONS IN mm

ALL SPACERS UP TO
& INCLUDING 28mm

22 TO 28mm SPACERS DO NOT HAVE
A THROUGH TAPPED HOLE, BUT
HAVE A MINIMUM THREAD LENGTH
OF 10mm FROM BOTH ENDS.



ALL SPACERS
OVER 28mm



PART No.	LI	PART No.	LI	PART No.	LI	PART No.	LI
R30-1000402	4.00	R30-1001102	11.00	R30-1001802	18.00	R30-1003002	30.00
R30-1000502	5.00	R30-1001202	12.00	R30-1002002	20.00	R30-1003202	32.00
R30-1000602	6.00	R30-1001302	13.00	R30-1002102	21.00	R30-1003402	34.00
R30-1000702	7.00	R30-1001402	14.00	R30-1002202	22.00	R30-1003502	35.00
R30-1000802	8.00	R30-1001502	15.00	R30-1002402	24.00	R30-1003602	36.00
R30-1000902	9.00	R30-1001602	16.00	R30-1002502	25.00	R30-1003902	39.00
R30-1001002	10.00	R30-1001702	17.00	R30-1002802	28.00	R30-1004002	40.00

ORDER CODE:
R30-100XX02
LENGTH LI IN mm

CP	13	19.04.10	10711
NAME	ISS.	DATE	C/NOTE
APPROVED: C.PENROSE			
CHECKED:		R.ADDE	
DRAWN:		A. LIOTTA	
CUSTOMER REF.:			
ASSEMBLY DRG:			

HARWIN

HARWIN USA TEL: 603 893 5376 FAX: 603 893 5396 mis@harwin.com	HARWIN Europe (UK) TEL: 023 9231 4545 FAX: 023 9231 4590 mis@harwin.co.uk	HARWIN Asia TEL: +65 6 779 4909 FAX: +65 6 779 3868 mis@harwin.com.sg
--	--	--

THIS DRAWING AND ANY
INFORMATION OR DESCRIPTIVE
MATTER SET OUT HEREON ARE
CONFIDENTIAL AND COPYRIGHT
PROPERTY OF THE HARWIN
GROUP AND MUST NOT BE
DISCLOSED, LOANED, COPIED
OR USED FOR MANUFACTURING,
TENDERING OR FOR ANY
OTHER PURPOSE WITHOUT
THEIR WRITTEN PERMISSION.

TOLERANCES
X. = ±1mm
X.X = ±0.25mm
X.XX = ±0.10mm
X.XXX = ±0.01mm
ANGLES = ±5°
UNLESS STATED

MATERIAL:
BRASS
CW614N M TO BS EN 12164
(CuZn39Pb3)
FINISH: NICKEL
S/AREA: mm²

TITLE:
M3 HEXAGONAL
FEMALE SPACER
DRAWING NUMBER:
R30-100XX02

SHT
2 OF 2

Mouser Electronics

Authorized Distributor

Click to View Pricing, Inventory, Delivery & Lifecycle Information:

Harwin:

[R30-1002202](#) [R30-1003002](#) [R30-1002002](#) [R30-1002802](#) [R30-1002402](#) [R30-1003202](#) [R30-1001302](#) [R30-1000502](#)
[R30-1000902](#) [R30-1000702](#) [R30-1001502](#) [R30-1001102](#) [R30-1001802](#) [R30-1001002](#) [R30-1000602](#) [R30-1001402](#)
[R30-1001202](#) [R30-1000402](#) [R30-1001602](#) [R30-1000802](#) [R30-1002102](#) [R30-1002502](#) [R30-1003402](#)