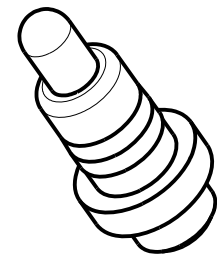
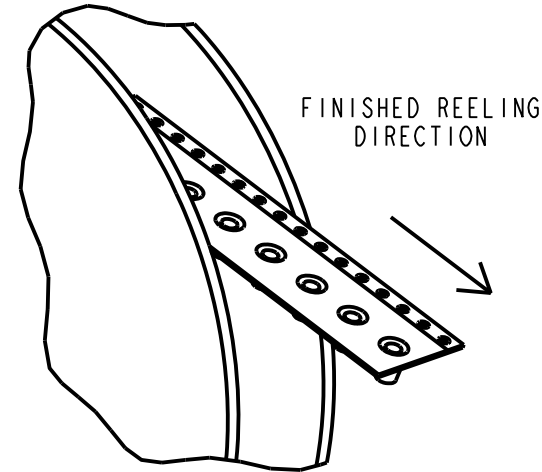
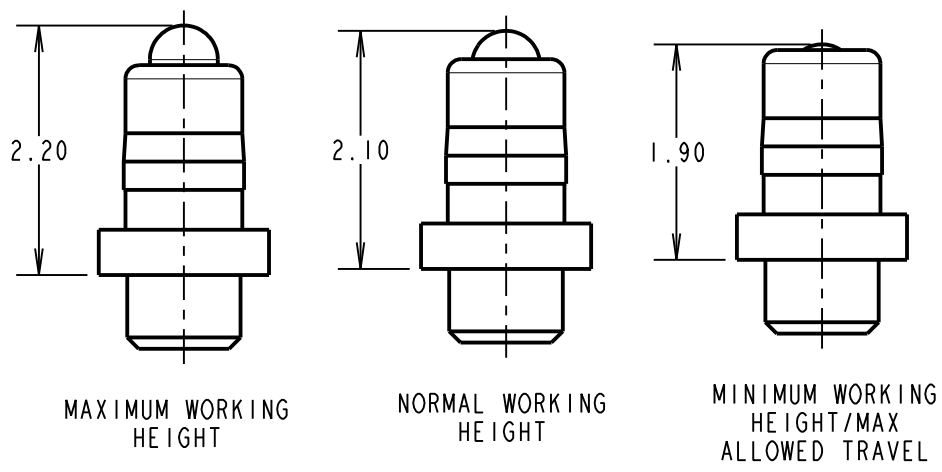
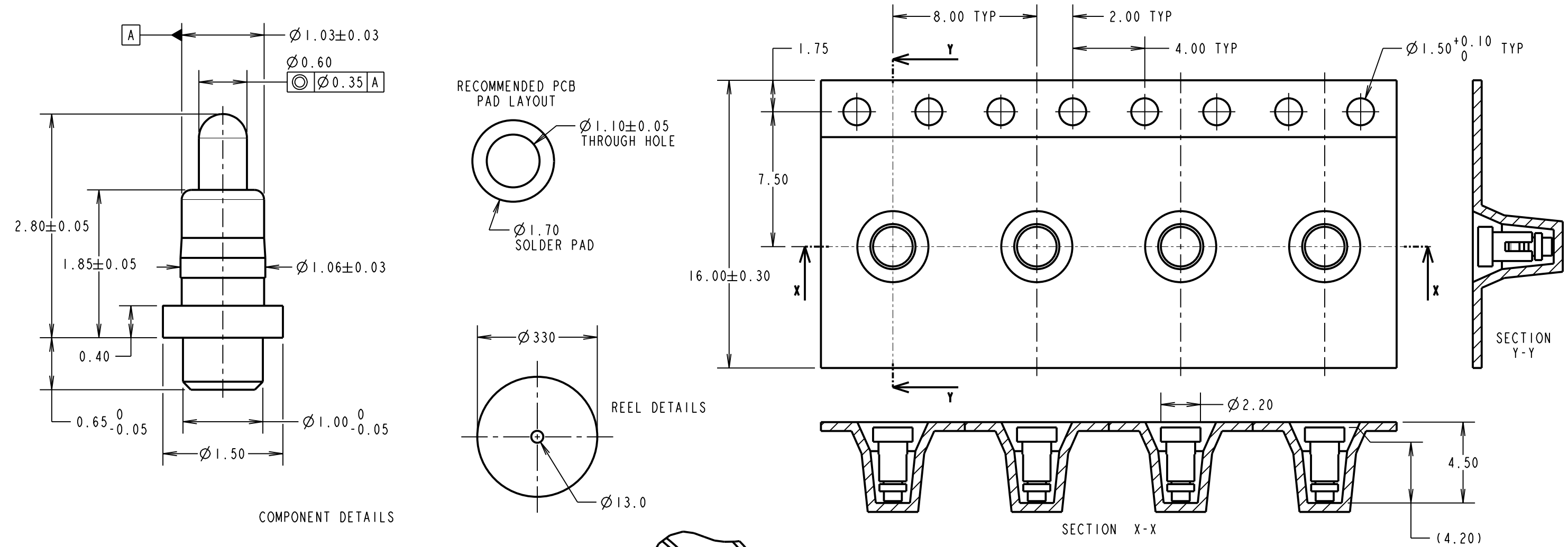


Customer Information Sheet



- NOTES:
- IF ASSEMBLING PIN INTO MOULDING:  
RECOMMENDED HOLE SIZE =  $\varnothing 1.01$  MIN.  
RECOMMENDED MATERIAL = GLASS FILLED PA46.
  - ALL PRODUCTS ARE RoHS COMPLIANT.
  - PRODUCT IS TAPE AND REELED IN GENERAL ACCORDANCE WITH EIA-481 (ELECTRONIC INDUSTRIES ASSOCIATION).

SPECIFICATION:

MATERIAL:  
BODY & PLUNGER = BRASS  
SPRING = STAINLESS STEEL WIRE

PLATING:  
BODY =  $0.1 \mu\text{m}$  GOLD OVER  $1.4 \mu\text{m}$  NICKEL  
PLUNGER =  $0.4 \mu\text{m}$  GOLD OVER  $1.4 \mu\text{m}$  NICKEL

ELECTRICAL:  
CONTACT RESISTANCE =  $30\text{m}\Omega$  MAX  
CURRENT RATING =  $1.0\text{A}$

MECHANICAL:  
FORCE AT NORMAL HEIGHT =  $0.39\text{N} \pm 0.09\text{N}$   
DURABILITY = 10,000 CYCLES

ENVIRONMENTAL:  
OPERATING TEMPERATURE =  $-40^\circ\text{C}$  TO  $85^\circ\text{C}$

PACKING:  
QUANTITY: 1800 COMPONENTS PER REEL

RTP	3	03.06.21	30572
NAME	ISS.	DATE	CN/CO
APPROVED: R.PORTLOCK			
CHECKED: M.RUDKIN			
DRAWN: S.BENNETT			
CUSTOMER REF.:			
ASSEMBLY DRG:			

[www.harwin.com](http://www.harwin.com)  
[technical@harwin.com](mailto:technical@harwin.com)

THIS DRAWING AND ANY INFORMATION OR DESCRIPTIVE MATTER SET OUT HEREON ARE CONFIDENTIAL AND COPYRIGHT PROPERTY OF THE HARWIN GROUP AND MUST NOT BE DISCLOSED, LOANED, COPIED OR USED FOR MANUFACTURING, TENDERING OR FOR ANY OTHER PURPOSE WITHOUT THEIR WRITTEN PERMISSION.

TOLERANCES

X. =  $\pm 1\text{mm}$   
X.X =  $\pm 0.50\text{mm}$   
X.XX =  $\pm 0.20\text{mm}$   
X.XXX =  $\pm 0.01\text{mm}$

ANGLES =  $\pm 5^\circ$

UNLESS STATED

MATERIAL: SEE ABOVE

FINISH: SEE ABOVE

S/AREA: mm<sup>2</sup>

TITLE: SMT SPRING LOADED POGO PIN WITH PEG, IN TAPE AND REEL

DRAWING NUMBER: P70-6000045R

SHT 2 OF 2

# Mouser Electronics

Authorized Distributor

Click to View Pricing, Inventory, Delivery & Lifecycle Information:

Harwin:

P70-6000045R