

# Customer Information Sheet

DRAWING No.: P70-2200045

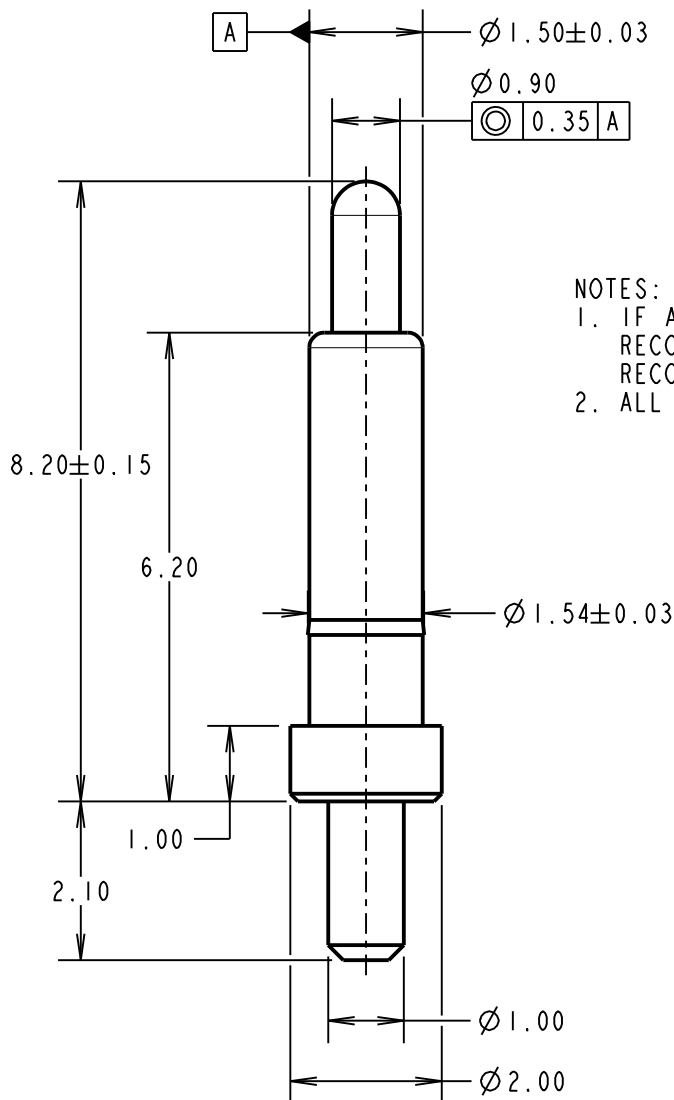
IF IN DOUBT - ASK

(C)

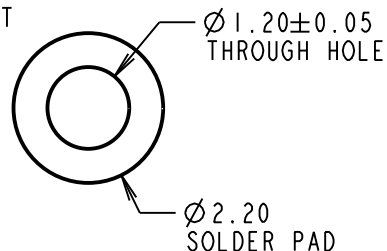
NOT TO SCALE

THIRD ANGLE PROJECTION

ALL DIMENSIONS IN mm



RECOMMENDED PCB  
PAD LAYOUT



## NOTES:

1. IF ASSEMBLING PIN INTO MOULDING:  
RECOMMENDED HOLE SIZE =  $\phi 1.49$  MIN.  
RECOMMENDED MATERIAL = GLASS FILLED PA46.
2. ALL PRODUCTS ARE RoHS COMPLIANT.

## SPECIFICATION:

### MATERIAL:

BODY & PLUNGER = BRASS

SPRING = STAINLESS STEEL WIRE

### PLATING:

BODY =  $0.1 \mu\text{m}$  GOLD OVER  $1.4 \mu\text{m}$  NICKEL

PLUNGER =  $0.4 \mu\text{m}$  GOLD OVER  $1.4 \mu\text{m}$  NICKEL

### ELECTRICAL:

CONTACT RESISTANCE =  $30\text{m}\Omega$  MAX

CURRENT RATING = 2.0A

### MECHANICAL:

FORCE AT NORMAL HEIGHT =  $0.98\text{N} \pm 0.19\text{N}$

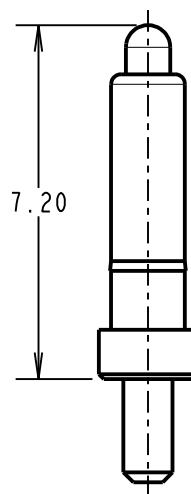
DURABILITY = 10,000 CYCLES

### ENVIRONMENTAL:

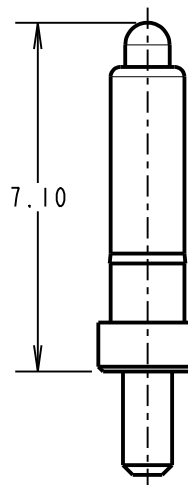
OPERATING TEMPERATURE =  $-40^\circ\text{C}$  TO  $85^\circ\text{C}$

PACKING:

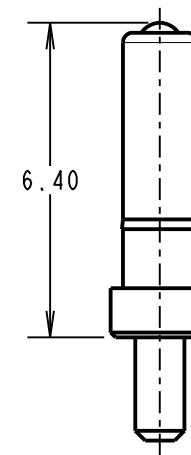
BAG



MAXIMUM WORKING  
HEIGHT



NORMAL WORKING  
HEIGHT



MINIMUM WORKING  
HEIGHT/MAX  
ALLOWED TRAVEL

RTP	2	04.06.21	30572
NAME	ISS.	DATE	CN/CO
APPROVED:		R.PORTLOCK	
CHECKED:		M.RUDKIN	
DRAWN:		S.BENNETT	
CUSTOMER REF.:			
ASSEMBLY DRG:			

# HARWIN

www.harwin.com  
technical@harwin.com

THIS DRAWING AND ANY  
INFORMATION OR DESCRIPTIVE  
MATTER SET OUT HEREON ARE  
CONFIDENTIAL AND COPYRIGHT  
PROPERTY OF THE HARWIN  
GROUP AND MUST NOT BE  
DISCLOSED, LOANED, COPIED  
OR USED FOR MANUFACTURING,  
TENDERING OR FOR ANY  
OTHER PURPOSE WITHOUT  
THEIR WRITTEN PERMISSION.

## TOLERANCES

X. =  $\pm 1\text{mm}$   
X.X =  $\pm 0.50\text{mm}$   
X.XX =  $\pm 0.20\text{mm}$   
X.XXX =  $\pm 0.01\text{mm}$

ANGLES =  $\pm 5^\circ$

UNLESS STATED

## MATERIAL:

SEE ABOVE

FINISH: SEE ABOVE

S/AREA: mm<sup>2</sup>

## TITLE:

SMT SPRING LOADED POGO PIN  
WITH PEG

DRAWING NUMBER:

P70-2200045

SHT  
2 OF 2

# Mouser Electronics

Authorized Distributor

Click to View Pricing, Inventory, Delivery & Lifecycle Information:

Harwin:

P70-2200045