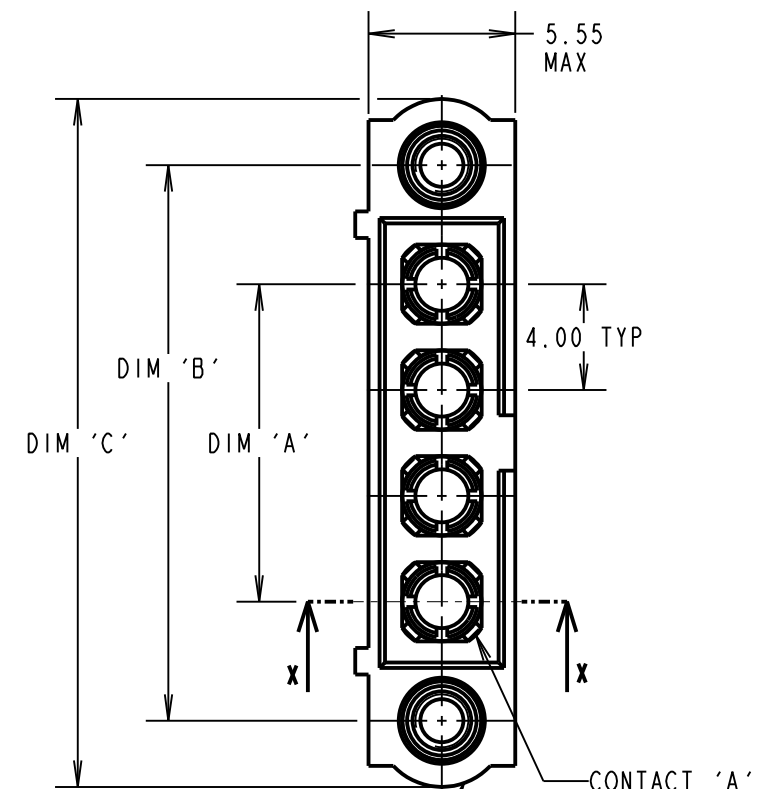
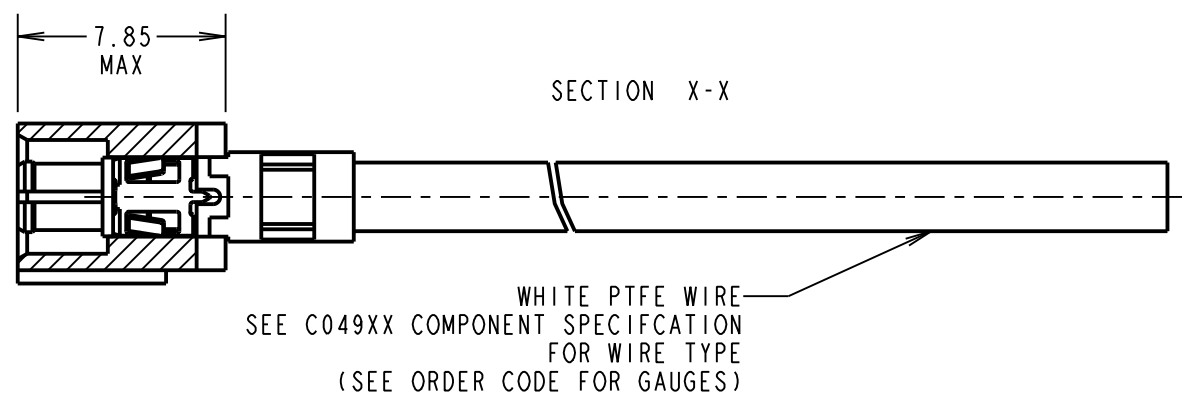
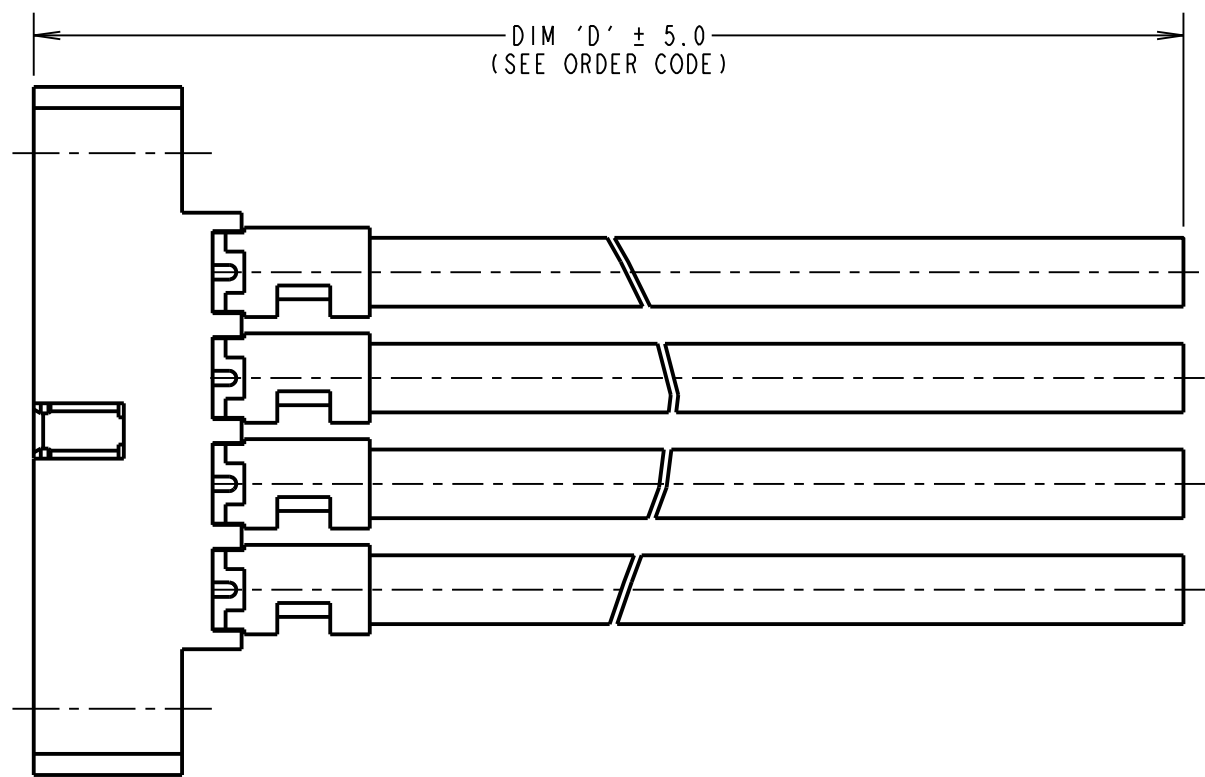


Customer Information Sheet



MALE MOULDING (1-OFF):  
SEE ORDER CODE FOR TOTAL  
No. OF CONTACTS



SOLDERED CONTACTS

M80-336  
M80-337  
  
M80-PM5

CRIMPED CONTACTS

M80-339

NOTES:  
1. CABLE ASSEMBLIES ARE BULK PACKED IN BAGS.  
2. FOR COMPLETE SPECIFICATION SEE COMPONENT SPECIFICATION C005XX AND C049XX (LATEST ISSUES).

DIMENSION	MEASUREMENT
DIM 'A'	(4 x No. OF CONTACTS) - 4.00
DIM 'B'	(4 x No. OF CONTACTS) + 5.00
DIM 'C'	(4 x No. OF CONTACTS) +10.0

EXAMPLE PART No.:  
2 CONTACT CONNECTOR WITH 300mm OF 20AWG WIRE = M80-MC339MI-02-0300L  
10 CONTACT CONNECTOR WITH 150mm OF 10AWG WIRE = M80-MCPM5MI-10-0150L

ORDER CODE: M80-MCXXXMI-XX-XXXXL

POWER CONTACT: \_\_\_\_\_  
335 = POWER CONTACT SOLDER 12AWG M80-335  
336 = POWER CONTACT SOLDER 14AWG M80-336  
337 = POWER CONTACT SOLDER 16AWG M80-337  
338 = POWER CONTACT CRIMP 18AWG M80-338  
339 = POWER CONTACT CRIMP 20AWG M80-339  
PM5 = POWER CONTACT SOLDER 10AWG M80-PM5

DIM 'D' LENGTH: \_\_\_\_\_  
0060 = 60mm MIN  
9999 = 9999mm MAX  
(SEE TABLE FOR EXAMPLES)

TOTAL No. OF CONTACTS: \_\_\_\_\_  
02 TO 12

RTP	3	11.03.21	30101
NAME	ISS.	DATE	CN/CO
APPROVED: R.PORTLOCK			
CHECKED: M.RUDKIN			
DRAWN: F. MCGOWAN			
CUSTOMER REF.:			
ASSEMBLY DRG:			

www.harwin.com  
technical@harwin.com

THIS DRAWING AND ANY INFORMATION OR DESCRIPTIVE MATTER SET OUT HEREON ARE CONFIDENTIAL AND COPYRIGHT PROPERTY OF THE HARWIN GROUP AND MUST NOT BE DISCLOSED, LOANED, COPIED OR USED FOR MANUFACTURING, TENDERING OR FOR ANY OTHER PURPOSE WITHOUT THEIR WRITTEN PERMISSION.

TOLERANCES  
X. = ±1mm  
X.X = ±0.50mm  
X.XX = ±0.20mm  
X.XXX = ±0.01mm  
  
ANGLES = ±5°  
UNLESS STATED

MATERIAL:  
SEE ABOVE  
  
FINISH: SEE ABOVE  
  
S/AREA: mm<sup>2</sup>

TITLE: DATAMATE POWER MALE SINGLE-ENDED CABLE ASSEMBLY WITH JACKSCREW  
  
DRAWING NUMBER:  
M80-MCXXXMI-XX-XXXXL

SHT 2 OF 2

# Mouser Electronics

Authorized Distributor

Click to View Pricing, Inventory, Delivery & Lifecycle Information:

Harwin:

[M80-MC335M1-02-0150L](#) [M80-MC335M1-04-0150L](#) [M80-MC335M1-06-0150L](#) [M80-MC335M1-08-0150L](#) [M80-MCPM5M1-02-0150L](#) [M80-MCPM5M1-04-0150L](#) [M80-MCPM5M1-06-0150L](#) [M80-MCPM5M1-08-0150L](#)