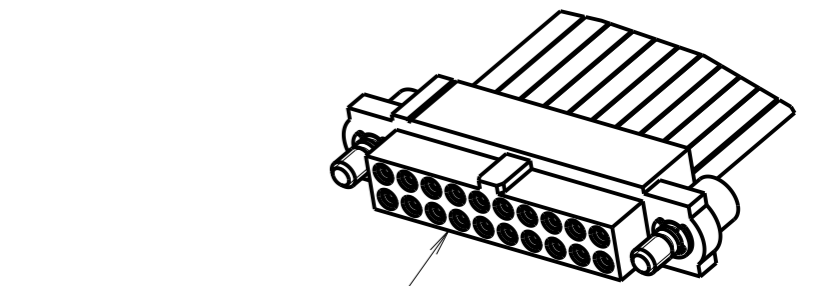
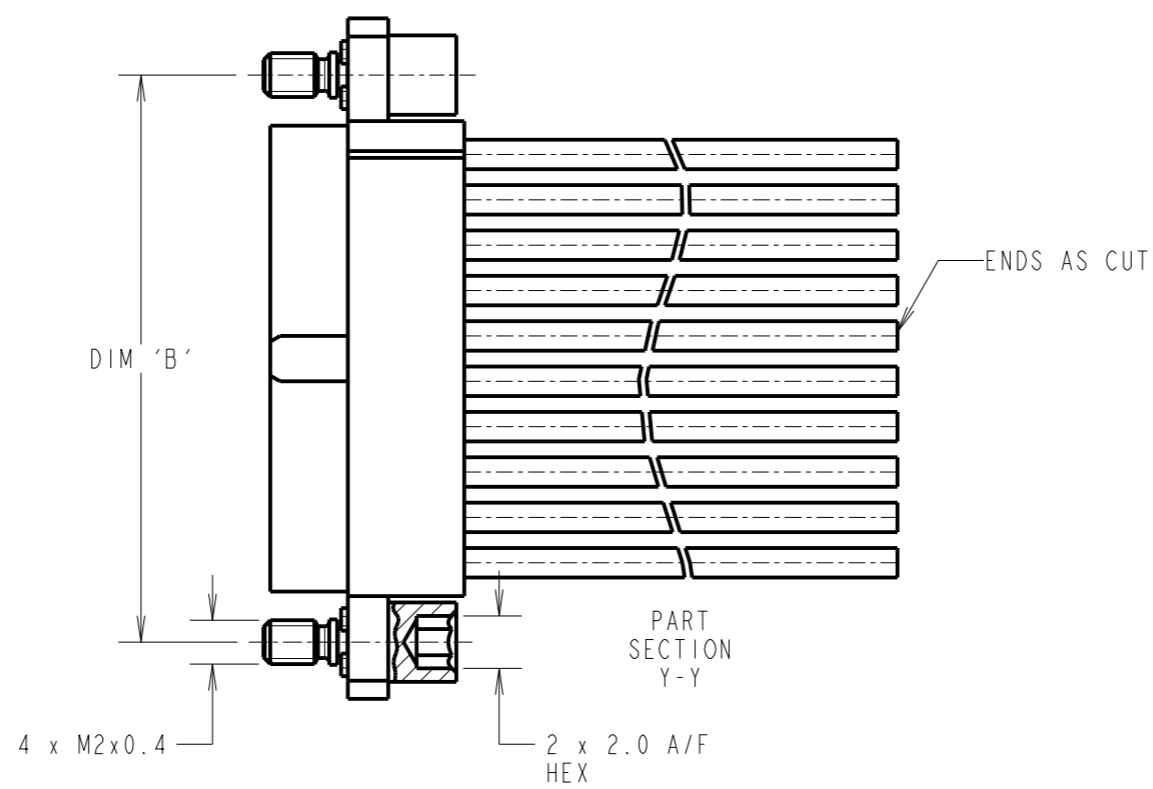
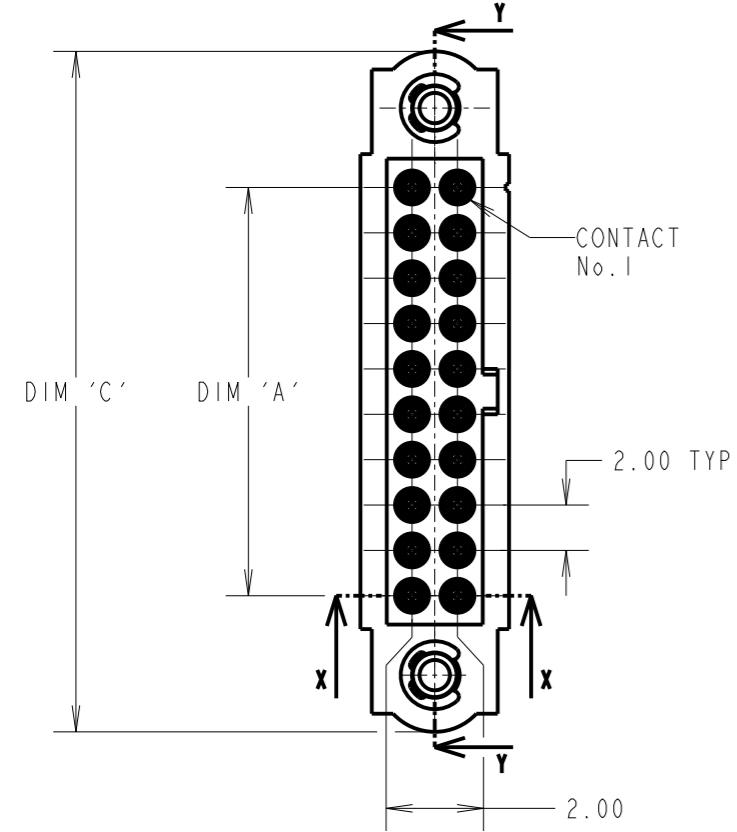
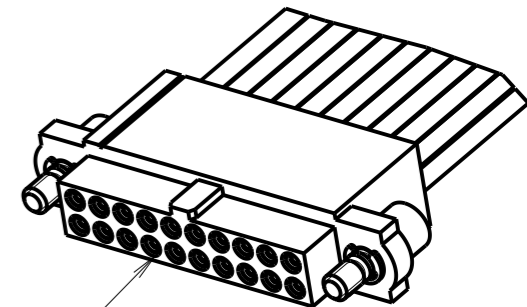


Customer Information Sheet

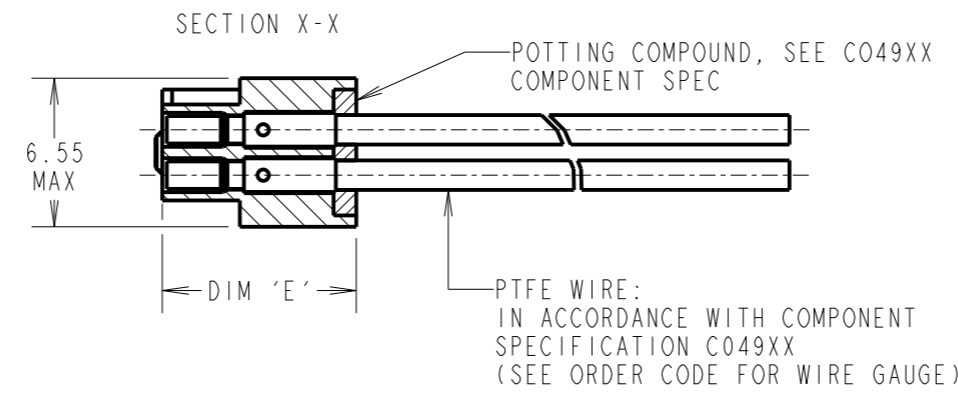


FEMALE MOULDING 1mm  
POTTING WALL (I-OFF):  
SEE ORDER CODE FOR  
TOTAL No. OF CONTACTS



FEMALE MOULDING 5mm  
POTTING WALL (I-OFF):  
SEE ORDER CODE FOR  
TOTAL No. OF CONTACTS

CONTACT No.	WIRE COLOUR
1	BLACK
2	BROWN
3	RED
4	ORANGE
5	YELLOW
6	GREEN
7	BLUE
8	VIOLET
9	GREY
10	WHITE
WIRE COLOURS REPEAT IN ABOVE ORDER FOR ASSEMBLIES OVER 10 CONTACTS	



DIMENSION	MEASUREMENT
DIM 'A'	TOTAL No. OF CONTACTS - 2.0
DIM 'B'	TOTAL No. OF CONTACTS + 5.0
DIM 'C'	TOTAL No. OF CONTACTS + 10.0
DIM 'E'	M80-FEXXXX68F2-XXXXL (5mm WALL) = 12.60±0.10 M80-FFXXXX68F2-XXXXL (1mm WALL) = 8.55±0.10
EXAMPLE PART No.: 10 CONTACT CONNECTOR WITH 150mm OF 22AWG WIRE AND 1mm POTTING WALL = M80-FF11068F2-0150L 50 CONTACT CONNECTOR WITH 450mm OF 24AWG WIRE AND 5mm POTTING WALL = M80-FE25068F2-0450L	

ORDER CODE:  
**M80-FXXXX68F2-XXXXL**

POTTING WALL: E = 5mm, F = 1mm

WIRE AWG: 1 = 22AWG (LARGE BORE), 2 = 24AWG (SMALL BORE), 3 = 26AWG (SMALL BORE), 4 = 28AWG (SMALL BORE)

TOTAL No. OF CONTACTS: 06, 10, 12, 14, 18, 20, 26, 34, 42, 50.

DIM 'D' LENGTH: 0060 = 60mm MIN, 9999 = 9999mm MAX (SEE TABLE FOR EXAMPLES)

RA	3	18.05.22	31469
NAME	ISS.	DATE	CN/CO
APPROVED: R.ALEXANDER			
CHECKED: R.PORTLOCK			
DRAWN: R.ALEXANDER			
CUSTOMER REF.:			
ASSEMBLY DRG:			

- NOTES:
- CABLE ASSEMBLIES WILL BE BULK PACKED IN BAGS.
  - FOR COMPLETE SPECIFICATION, SEE COMPONENT SPECIFICATION C005XX (LATEST ISSUE) AND C049XX (LATEST ISSUE).

# Mouser Electronics

Authorized Distributor

Click to View Pricing, Inventory, Delivery & Lifecycle Information:

[Harwin:](#)

[M80-FE22068F2-0450L](#) [M80-FE21068F2-0450L](#) [M80-FE21468F2-0450L](#) [M80-FE20668F2-0450L](#) [M80-FE21268F2-0450L](#) [M80-FE22668F2-0450L](#) [M80-FF22068F2-0450L](#) [M80-FE23468F2-0450L](#) [M80-FE24268F2-0450L](#) [M80-FE25068F2-0450L](#) [M80-FF20668F2-0450L](#) [M80-FF21068F2-0450L](#) [M80-FF21268F2-0450L](#) [M80-FF10668F2-0300L](#) [M80-FF12668F2-0600L](#)