

Customer Information Sheet

DRAWING No.: M80-4S1XXXXF9

IF IN DOUBT - ASK

©

NOT TO SCALE

THIRD ANGLE PROJECTION

ALL DIMENSIONS IN mm

SPECIFICATIONS:

MATERIAL:

MOULDING = GLASS-FILLED PPS, UL94V-0, BLACK
CONTACT CLIP = BERYLLIUM COPPER
CONTACT SHELL = COPPER ALLOY
JACKSCREW, NUT, WASHER = STAINLESS STEEL

FINISH:

01 = 0.3µm GOLD CLIP, 3.5-5.0µm TIN/LEAD SHELL
05 = 0.3µm GOLD CLIP, 0.25-0.3µm GOLD SHELL
42 = 0.3µm GOLD CLIP,
3.5-5.0µm 100% TIN OVER NICKEL SHELL

ELECTRICAL:

CURRENT RATING AT 25°C = 3.0A MAX
CURRENT RATING AT 85°C = 2.2A MAX
WORKING VOLTAGE = 800V AC/DC
VOLTAGE PROOF = 1200V AC/DC
CONTACT RESISTANCE = 25mΩ MAX
INSULATION RESISTANCE = 100MΩ MIN

MECHANICAL:

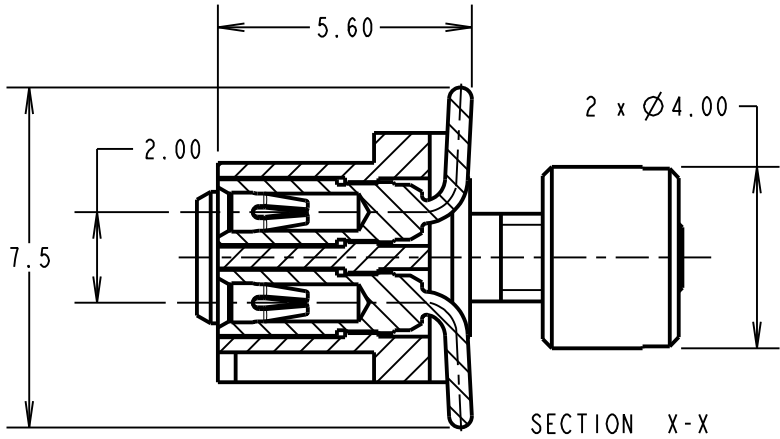
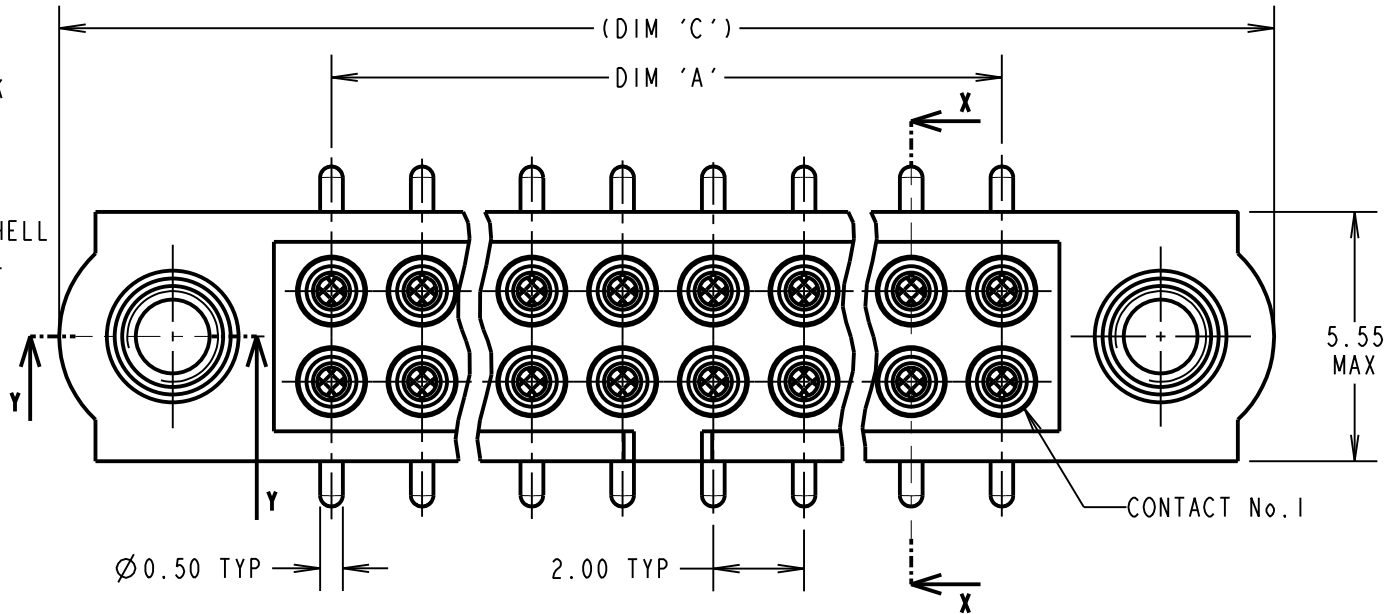
DURABILITY = 500 OPERATIONS
INSERTION FORCE (Ø0.5mm GAUGE) = 2.0N MAX
WITHDRAWAL FORCE (Ø0.5mm GAUGE) = 0.2N MIN

ENVIRONMENTAL:

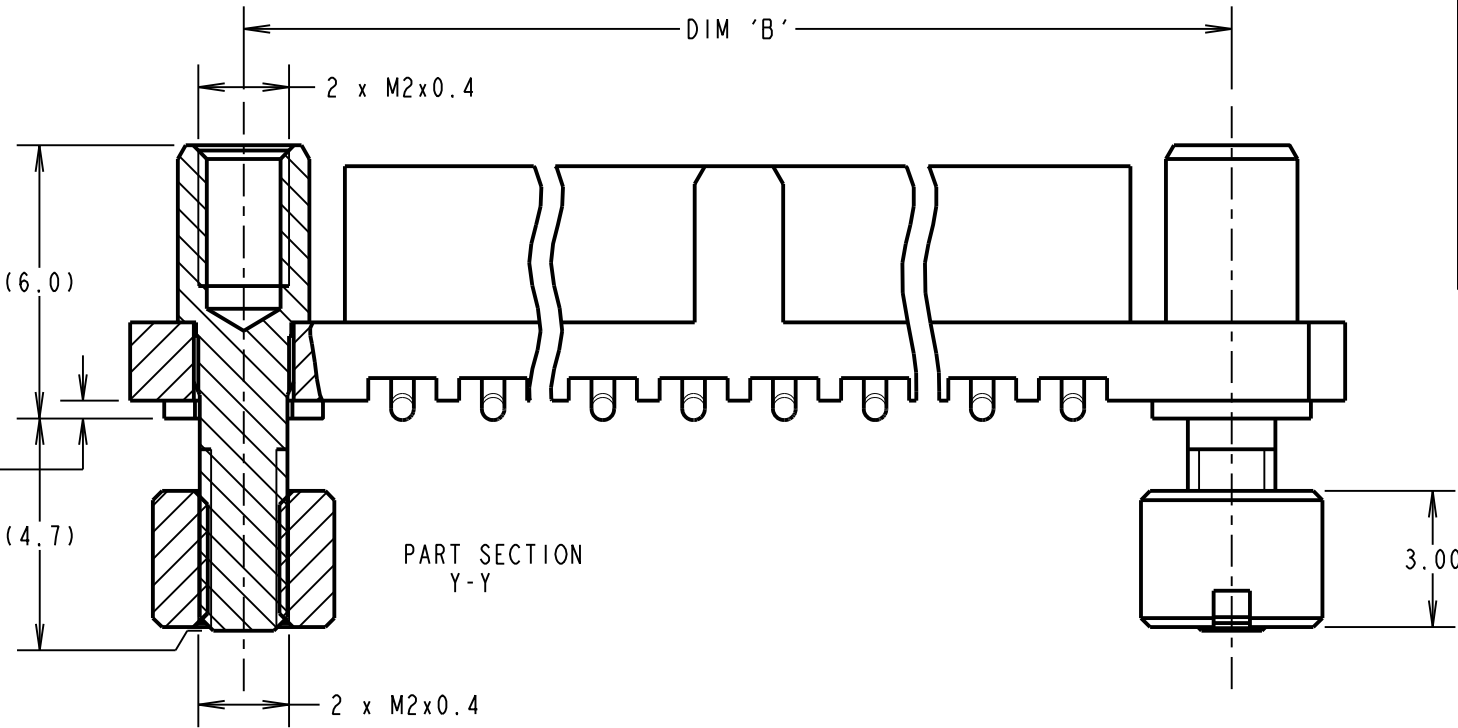
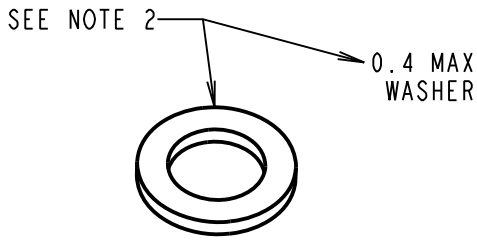
TEMPERATURE RANGE = -55°C TO +125°C

PACKING:

TUBE.
FOR COMPLETE SPECIFICATION, SEE
COMPONENT SPEC C005XX (LATEST ISSUE)

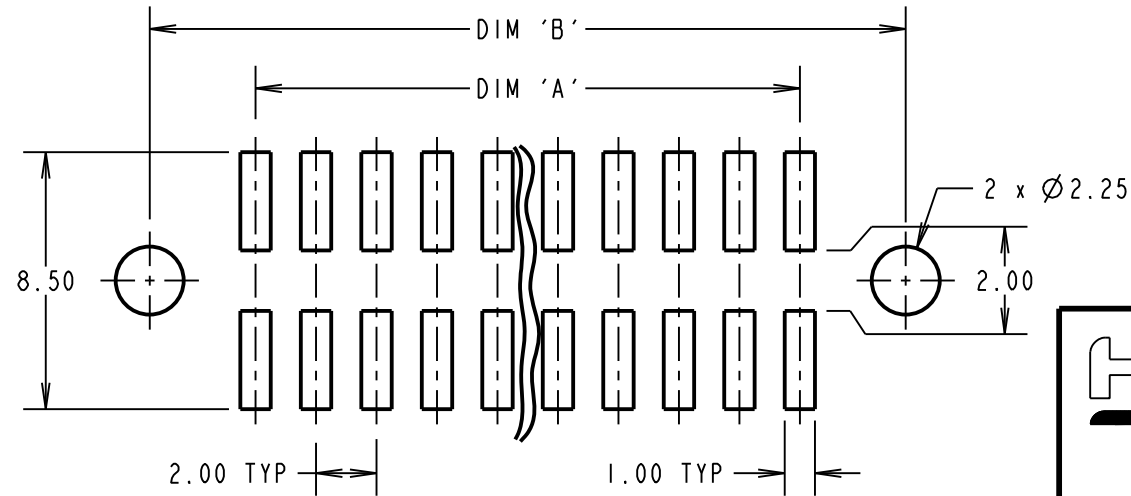


| DIMENSION | CALCULATION |
|--|------------------------------|
| DIM 'A' | TOTAL No. OF CONTACTS - 2.00 |
| DIM 'B' | TOTAL No. OF CONTACTS + 5.00 |
| DIM 'C' | TOTAL No. OF CONTACTS + 10.0 |
| EXAMPLE: CONNECTOR WITH 20 CONTACTS, GOLD CLIP AND 100% TIN OVER NICKEL SHELL, M80-4S12042F9 | |
| DIM 'A' = 18.00mm, DIM 'B' = 25.00mm, DIM 'C' = 30.0mm | |



- NOTES:
- CONNECTOR IS SUPPLIED WITH BOARD MOUNT NUTS AND WASHERS NOT ASSEMBLED AS SHOWN. THEY ARE SUPPLIED IN A BAG ATTACHED TO PACKING TUBE.
 - SUPPLIED M2 WASHERS MUST BE ASSEMBLED BETWEEN MOULDING AND PCB TO PREVENT BOWING WHEN ASSEMBLING BM NUTS.

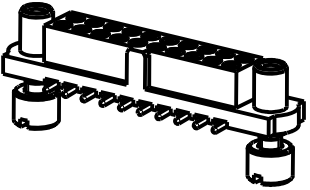
RECOMMENDED PCB LAYOUT
TOLERANCE = ±0.05



ORDER CODE:
M80-4S1XXXXF9

TOTAL No. OF CONTACTS
04 TO 50
(EVEN NUMBERS ONLY)

FINISH CODE
01 - GOLD CLIP, TIN/LEAD SHELL
05 - GOLD CLIP, GOLD SHELL
42 - GOLD CLIP, 100% TIN OVER NICKEL SHELL



HARWIN
www.harwin.com
technical@harwin.com

THIS DRAWING AND ANY INFORMATION OR DESCRIPTIVE MATTER SET OUT HEREON ARE CONFIDENTIAL AND COPYRIGHT PROPERTY OF THE HARWIN GROUP AND MUST NOT BE DISCLOSED, LOANED, COPIED OR USED FOR MANUFACTURING, TENDERING OR FOR ANY OTHER PURPOSE WITHOUT THEIR WRITTEN PERMISSION.

TOLERANCES
X. = ±1mm
X.X = ±0.50mm
X.XX = ±0.20mm
X.XXX = ±0.01mm
ANGLES = 2±5°
UNLESS STATED

MATERIAL:

SEE ABOVE

FINISH:

SEE ABOVE

S/AREA:

mm²

TITLE: DATAMATE J-TEK
FEMALE VERTICAL SMT ASSY
WITH REV FIX BOARD MOUNT

DRAWING NUMBER:
M80-4S1XXXXF9

SHT
2 OF 2

| | | | |
|----------------|------|----------|-------|
| MGP | 6 | 27.05.20 | 30042 |
| NAME | ISS. | DATE | CN/CO |
| APPROVED: MGP | | | |
| CHECKED: RA | | | |
| DRAWN: R. ADDE | | | |
| CUSTOMER REF.: | | | |
| ASSEMBLY DRG: | | | |

Mouser Electronics

Authorized Distributor

Click to View Pricing, Inventory, Delivery & Lifecycle Information:

[Harwin:](#)

[M80-4S11642F9](#) [M80-4S10405F9](#) [M80-4S15042F9](#) [M80-4S13442F9](#) [M80-4S10801F9](#) [M80-4S11842F9](#) [M80-4S10842F9](#) [M80-4S11205F9](#) [M80-4S11042F9](#) [M80-4S10401F9](#) [M80-4S12201F9](#) [M80-4S10642F9](#) [M80-4S10442F9](#)