

Customer Information Sheet

DRAWING No.: M80-301 TO M80-302

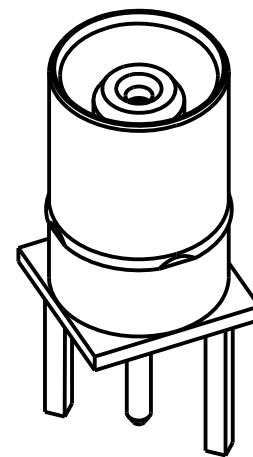
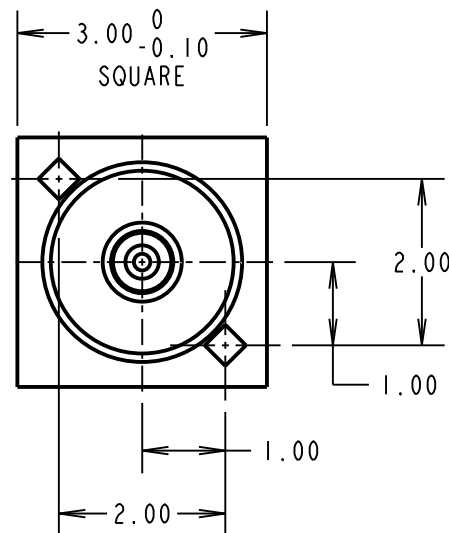
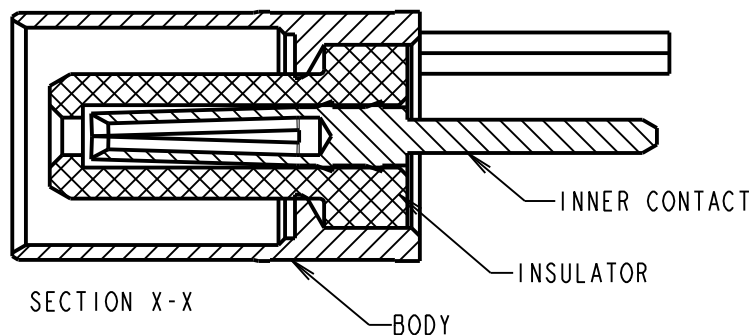
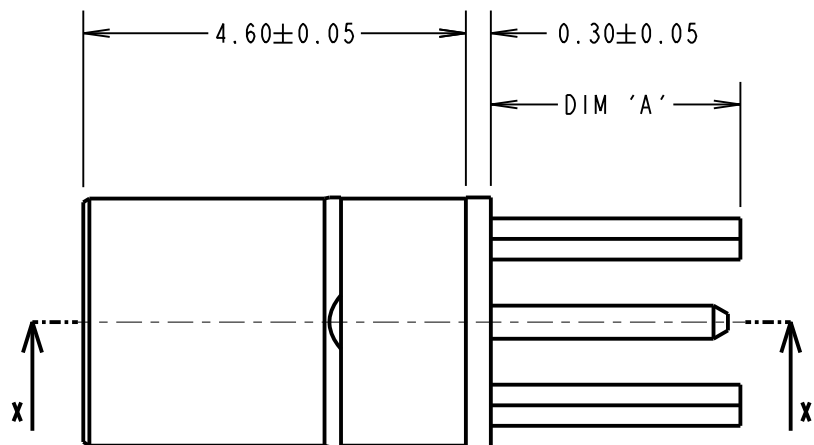
IF IN DOUBT - ASK

©

NOT TO SCALE

THIRD ANGLE PROJECTION

ALL DIMENSIONS IN mm



PART No.	DIM 'A'
M80-301	3.00
M80-302	4.50

NOTES:

1. CONNECTORS COMES SUPPLIED ASSEMBLED.
2. RECOMMENDED PCB HOLE SIZE = $\varnothing 0.60\text{mm}$ MIN.
3. FOR FULL SPECIFICATION SEE COMPONENT SPECIFICATION C005XX (LATEST ISSUE).

RA	6	02.06.21	30568
NAME	ISS.	DATE	CN/CO
APPROVED: R.ALEXANDER			
CHECKED: M.RUDKIN			
DRAWN: B. M. KENT			
CUSTOMER REF.:			
ASSEMBLY DRG:			

HARWIN

www.harwin.com
technical@harwin.com

THIS DRAWING AND ANY INFORMATION OR DESCRIPTIVE MATTER SET OUT HEREON ARE CONFIDENTIAL AND COPYRIGHT PROPERTY OF THE HARWIN GROUP AND MUST NOT BE DISCLOSED, LOANED, COPIED OR USED FOR MANUFACTURING, TENDERING OR FOR ANY OTHER PURPOSE WITHOUT THEIR WRITTEN PERMISSION.

TOLERANCES
X. = $\pm 1\text{mm}$
X.X = $\pm 0.50\text{mm}$
X.XX = $\pm 0.20\text{mm}$
X.XXX = $\pm 0.01\text{mm}$
ANGLES = $\pm 5^\circ$
UNLESS STATED

MATERIAL:
COPPER ALLOY WITH
PTFE INSULATOR

FINISH: GOLD
S/AREA: mm²

TITLE: DATAMATE MIX-TEK
COAX CONTACT
FEMALE VERTICAL PC-TAIL

DRAWING NUMBER:
M80-301 TO M80-302

SHT
2 OF 2

Mouser Electronics

Authorized Distributor

Click to View Pricing, Inventory, Delivery & Lifecycle Information:

Harwin:

[M80-301](#) [M80-302](#)