

Customer Information Sheet

IF IN DOUBT - ASK

©

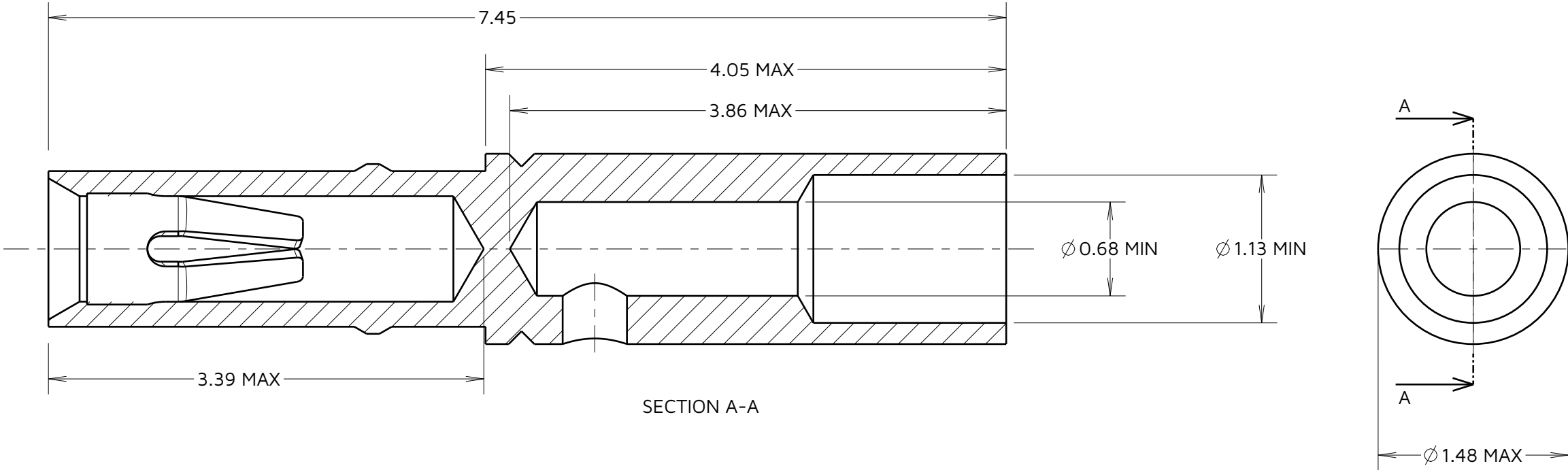
NOT TO SCALE

THIRD ANGLE PROJECTION

ALL DIMENSIONS IN mm

SPECIFICATION:
MATERIAL:
CONTACT SHELL = BRASS
CONTACT CLIP = BERYLLIUM COPPER
FINISH:
01 = 3.5 - 5.0µm 100% TIN OVER NICKEL
SHELL, 0.3µm GOLD CLIP
05 = 0.28µm GOLD SHELL, 0.3µm GOLD CLIP
PACKING:
BULK
FOR COMPLETE CONNECTOR SPECIFICATION, SEE COMPONENT
SPECIFICATION C005XX (LATEST ISSUE)

ORDER CODE:
M80-01300XX
FINISH: _____
01 = 100% TIN SHELL/GOLD CLIP
05 = GOLD SHELL/GOLD CLIP



- NOTES:
- SUITABLE FOR WIRE GAUGE 24, 26 & 28 AWG. MAXIMUM INSULATION DIAMETER $\varnothing 1.10$ mm, BS3G210 TYPE A WIRE RECOMMENDED. STRIP WIRE BY 2.00mm FOR CRIMPING.
 - RECOMMENDED CRIMP TOOL = M22520/2-01, POSITIONER = T5747,
 - FOR INSTRUCTIONS ON HAND CRIMP TOOL M22520/2-01, SEE INSTRUCTION SHEET IS-01.
 - RECOMMENDED MATING PIN SIZE = $\varnothing 0.51$ - 0.46 mm.

RTP	19	19.03.24	33839
NAME	ISS.	DATE	CN/CO
APPROVED:		R.PORTLOCK	
CHECKED:		A.YEOMANS	
DRAWN:		I.SANDY	
ASSEMBLY DRG:			

HARWIN
www.harwin.com

TOLERANCES
X. = ± 1 mm
X.X = ± 0.50 mm
X.XX = ± 0.20 mm
X.XXX = ± 0.01 mm
ANGLES = $\pm 5^\circ$
UNLESS STATED

THIS DRAWING AND ANY
INFORMATION OR DESCRIPTIVE
MATTER SET OUT HEREON ARE
CONFIDENTIAL AND COPYRIGHT
PROPERTY OF THE HARWIN GROUP
AND MUST NOT BE DISCLOSED,
LOANED, COPIED OR USED FOR
MANUFACTURING, TENDERING OR FOR
ANY OTHER PURPOSE WITHOUT THEIR
WRITTEN PERMISSION.

MATERIAL:

SEE ABOVE

TITLE: **CRIMP SOCKET
CONTACT ASSEMBLY
(SMALL BORE)**
DRAWING NUMBER: **M80-01300XX**
SHT 2 OF 2

Mouser Electronics

Authorized Distributor

Click to View Pricing, Inventory, Delivery & Lifecycle Information:

[Harwin:](#)

[M80-0130005](#) [M80-0130001](#)