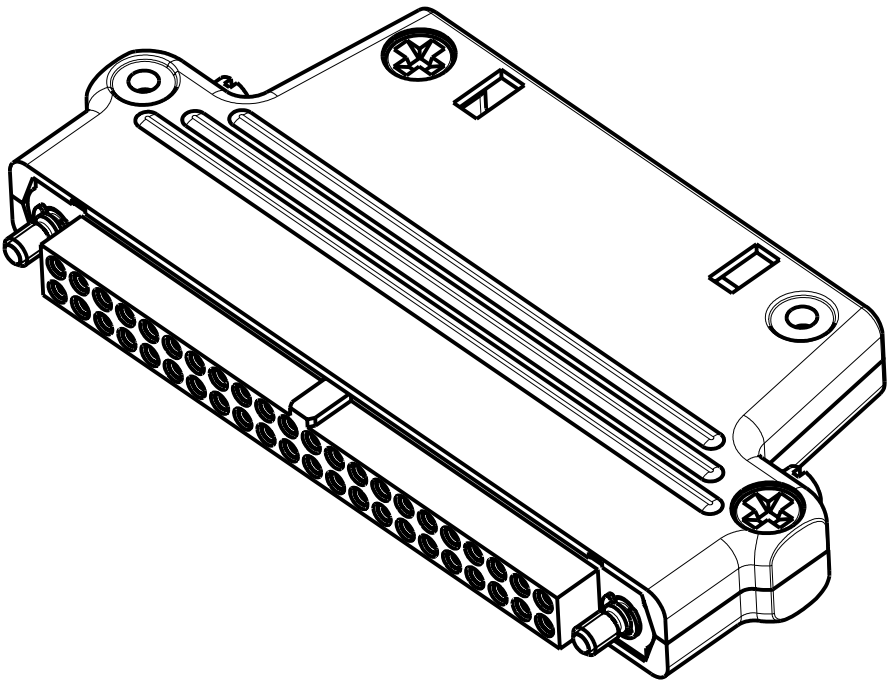
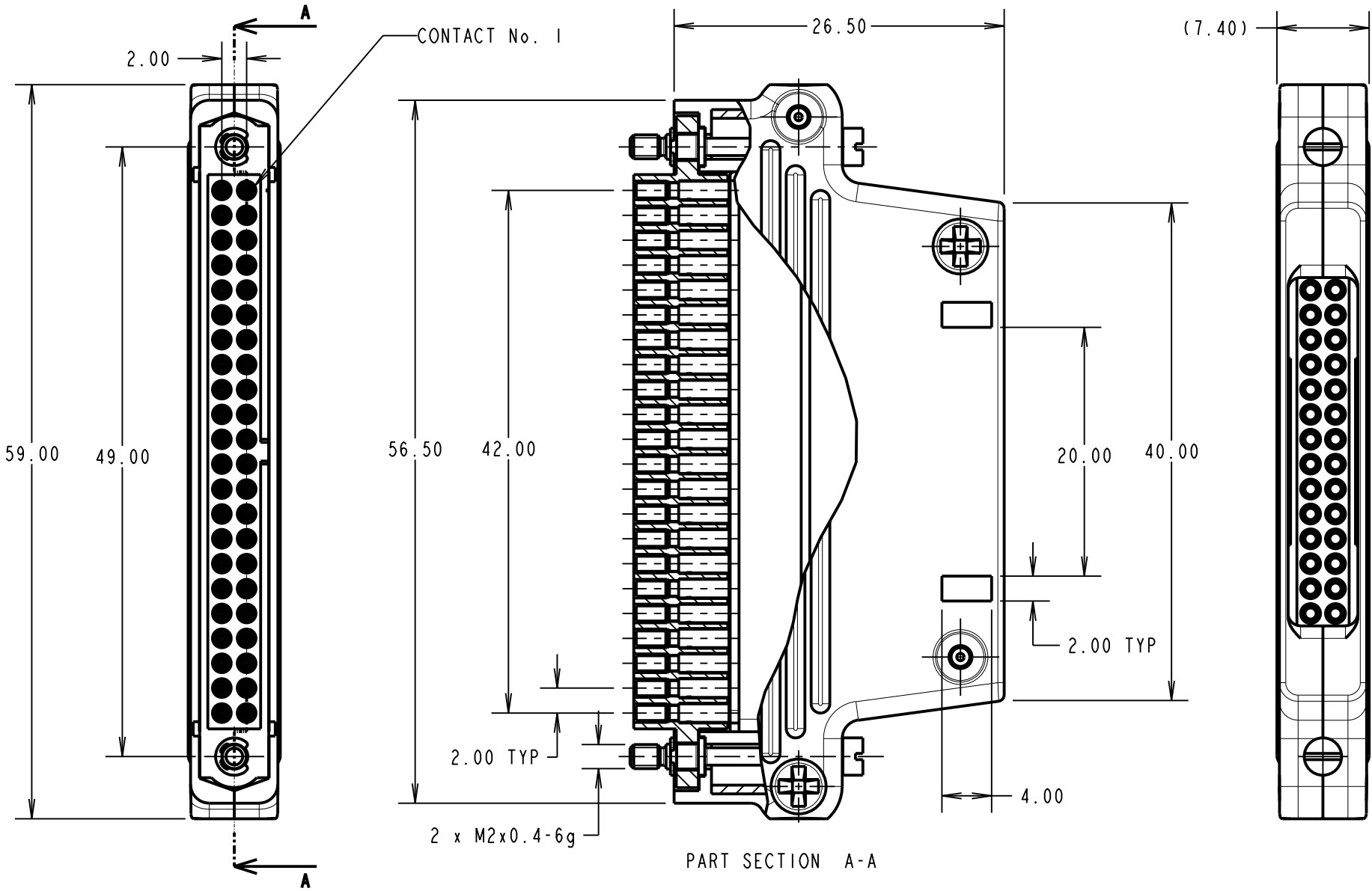


Customer Information Sheet

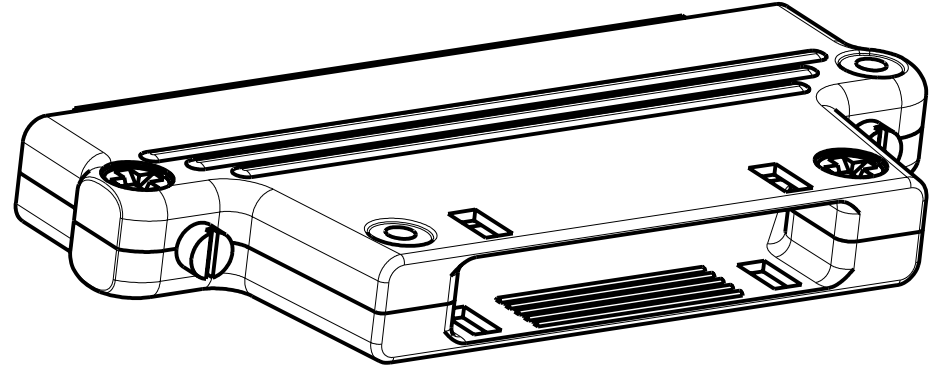
DRAWING No.: M80C108448C SHEET 2 OF 2 IF IN DOUBT - ASK © NOT TO SCALE THIRD ANGLE PROJECTION ALL DIMENSIONS IN mm



SPECIFICATIONS:
MATERIAL:
CABLE HOOD = 30% GLASS-FILLED POLYAMIDE 46, UL94V-0, BLACK
DATAMATE MOULDING = 30% GLASS-FILLED PPS, UL94V-0, BLACK
CONTACT CLIP = BERYLIUM COPPER
CONTACT SHELL = BRASS
JACKSCREW AND CIRCLIP = STAINLESS STEEL
CABLE HOOD FIXING SCREW = MILD STEEL
FINISH:
CONTACT CLIP = 0.3µ GOLD
CONTACT SHELL = 0.25-0.3µ GOLD
CABLE HOOD FIXING SCREW = CHEMI BLACK
ELECTRICAL:
CURRENT RATING AT 25°C = 3.0A MAX
CURRENT RATING AT 85°C = 2.2A MAX
WORKING VOLTAGE = 120V AC/DC
VOLTAGE PROOF = 360V AC/DC
CONTACT RESISTANCE = 25 mΩ MAX
INSULATION RESISTANCE = 100 MΩ MIN
MECHANICAL:
DURABILITY = 500 OPERATIONS
ENVIRONMENTAL:
TEMPERATURE RANGE = -55°C TO +125°C
PACKING:
BAG
FOR COMPLETE SPECIFICATION, SEE COMPONENT SPECIFICATION COO5XX (LATEST ISSUE).

CP	2	11.11.09	10555
NAME	ISS.	DATE	C/NOTE
APPROVED: C.PENROSE			
CHECKED: R.ADDE			
DRAWN: MARK G PLESTED			
CUSTOMER REF.:			
ASSEMBLY DRG:			

- NOTES:
- CONNECTORS ARE SUPPLIED WITH CONTACTS, CABLE HOOD SET, AND CABLE HOOD FIXING SCREWS UNASSEMBLED.
 - FOR EXTRA CONTACTS, USE PART NUMBER M80-0110005.
 - RECOMMENDED WIRE TYPE = BS 3G 210 TYPE A, PTFE INSULATED 22 AWG. MAX INSULATION DIAMETER = Ø1.10mm, STRIP WIRE BY 2.00mm.
 - RECOMMENDED HAND CRIMP TOOL = M22520/2-01 WITH POSITIONER T5747.
 - CONTACT INSERTION AND EXTRACTION TOOL = Z80-280.
 - INSTRUCTION SHEETS ARE AVAILABLE.
 - THIS PART IS THE SAME AS M80-9414405 BUT WITH SPECIAL NARROW HOOD.



<div>HARWIN</div>			THIS DRAWING AND ANY INFORMATION OR DESCRIPTIVE MATTER SET OUT HEREON ARE CONFIDENTIAL AND COPYRIGHT PROPERTY OF THE HARWIN GROUP AND MUST NOT BE DISCLOSED, LOANED, COPIED OR USED FOR MANUFACTURING, TENDERING OR FOR ANY OTHER PURPOSE WITHOUT THEIR WRITTEN PERMISSION.	TOLERANCES	MATERIAL:	TITLE:44 WAY J/SCREW DATAMATE DIL LARGE BORE CRIMP FEMALE WITH SPECIAL NARROW HOOD		
HARWIN USA TEL: 603 893 5376 FAX: 603 893 5396 mis@harwin.com	HARWIN Europe (UK) TEL: 023 9231 4545 FAX: 023 9231 4590 mis@harwin.co.uk	HARWIN Asia TEL: +65 6 779 4909 FAX: +65 6 779 3868 mis@harwin.com.sg		X. = ±1mm X.X = ±0.25mm X.XX = ±0.10mm X.XXX = ±0.01mm ANGLES = ±5° UNLESS STATED	SEE ABOVE	FINISH: SEE ABOVE	DRAWING NUMBER: M80C108448C	SHT 2 OF 2
					S/AREA: mm ²			

Mouser Electronics

Authorized Distributor

Click to View Pricing, Inventory, Delivery & Lifecycle Information:

[Harwin:](#)

[M80C108448C](#)