

# Customer Information Sheet

DRAWING No.: M80-887XXX

SHEET 2 OF 2

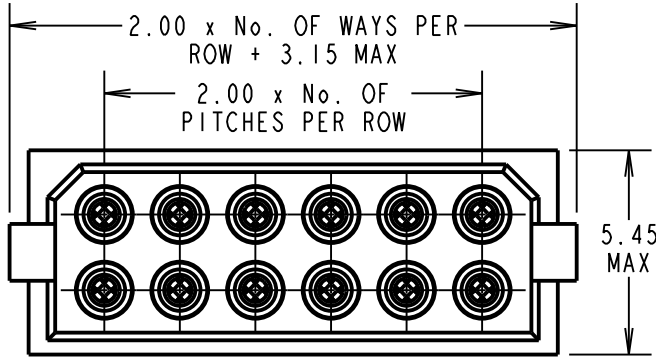
IF IN DOUBT - ASK

(C)

NOT TO SCALE

THIRD ANGLE PROJECTION

ALL DIMENSIONS IN mm



SECTION X-X



**SPECIFICATIONS:**

**MATERIAL:**

MOULDING = GLASS-FILLED POLYESTER, UL94V-0, BLACK

CONTACT CLIP = BERYLLIUM COPPER

CONTACT SHELL = BRASS

**FINISH:**

01 = 0.3µ GOLD CLIP, 3.5-5.0µ TIN/LEAD SHELL

05 = 0.3µ GOLD CLIP, 0.25-0.3µ GOLD SHELL

**ELECTRICAL:**

CURRENT RATING AT 25°C = 3.0A MAX

CURRENT RATING AT 85°C = 2.2A MAX

WORKING VOLTAGE = 800V AC/DC

VOLTAGE PROOF = 1200V AC/DC

CONTACT RESISTANCE = 25 mΩ MAX

INSULATION RESISTANCE = 100 MΩ MIN

**MECHANICAL:**

DURABILITY = 500 OPERATIONS

INSERTION FORCE (∅0.5mm GAUGE) = 2.8N MAX

WITHDRAWAL FORCE (∅0.5mm GAUGE) = 0.2N MIN

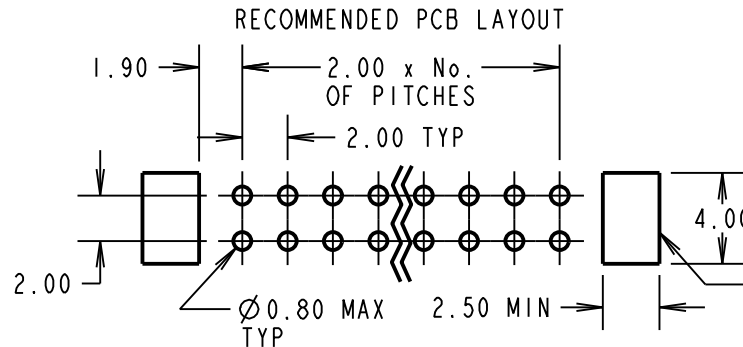
**ENVIRONMENTAL:**

TEMPERATURE RANGE = -55°C TO +125°C

**PACKING:**

TUBE

FOR COMPLETE SPECIFICATION, SEE COMPONENT SPECIFICATION C005XX (LATEST ISSUE)



ORDER CODE:

**M80-887XXX**

TOTAL No. OF WAYS: \_\_\_\_\_

04, 06, 08, 10, 12, 14,  
16, 18, 20, 26, 34, 44

FINISH \_\_\_\_\_

01 = GOLD CLIP, TIN/LEAD SHELL  
05 = GOLD CLIP, GOLD SHELL

BRITISH STANDARD

ORDER CODE:

**B5741-2XX-F-T-X**

TOTAL No. OF WAYS: \_\_\_\_\_

04, 06, 08, 10, 12, 14, 16,  
18, 20, 26, 34, 44

FINISH: \_\_\_\_\_

0 = GOLD CLIP, TIN/LEAD SHELL  
2 = GOLD CLIP, GOLD SHELL

SB	15	05.03.12	11672
NAME	ISS.	DATE	C/NOTE
APPROVED: S.BENNETT			
CHECKED: S.FLOWER			
DRAWN: JM BROOKES			
CUSTOMER REF.:			
ASSEMBLY DRG:			

**HARWIN**

www.harwin.com  
technical@harwin.com

THIS DRAWING AND ANY INFORMATION OR DESCRIPTIVE MATTER SET OUT HEREON ARE CONFIDENTIAL AND COPYRIGHT PROPERTY OF THE HARWIN GROUP AND MUST NOT BE DISCLOSED, LOANED, COPIED OR USED FOR MANUFACTURING, TENDERING OR FOR ANY OTHER PURPOSE WITHOUT THEIR WRITTEN PERMISSION.

**TOLERANCES**

X. = ±1mm  
X.X = ±0.25mm  
X.XX = ±0.10mm  
X.XXX = ±0.01mm

ANGLES = ±5°  
UNLESS STATED

**MATERIAL:**

SEE ABOVE

FINISH: SEE ABOVE

S/AREA: mm<sup>2</sup>

TITLE: DATAMATE 2mm PITCH  
DIL VERTICAL PC TAIL  
SOCKET ASSEMBLY

DRAWING NUMBER:

**M80-887XXX**

SHT  
2 OF 2

# Mouser Electronics

Authorized Distributor

Click to View Pricing, Inventory, Delivery & Lifecycle Information:

## Harwin:

[M80-8870605](#) [M80-8871005](#) [M80-8871205](#) [M80-8870805](#) [M80-8870405](#) [M80-8873401](#) [M80-8872601](#) [M80-8872001](#) [M80-8874401](#) [M80-8874405](#) [B5741-218-F-T-2](#) [B5741-218-F-T-0](#) [B5741-208-F-T-2](#) [B5741-208-F-T-0](#) [B5741-234-F-T-0](#) [B5741-234-F-T-2](#) [B5741-210-F-T-0](#) [B5741-214-F-T-0](#) [B5741-212-F-T-0](#) [B5741-216-F-T-0](#) [B5741-210-F-T-2](#) [B5741-214-F-T-2](#) [B5741-212-F-T-2](#) [B5741-216-F-T-2](#) [B5741-226-F-T-2](#) [B5741-220-F-T-2](#) [B5741-220-F-T-0](#) [B5741-226-F-T-0](#) [B5741-206-F-T-0](#) [B5741-204-F-T-0](#) [B5741-206-F-T-2](#) [B5741-204-F-T-2](#) [M80-8873405](#) [M80-8872605](#) [M80-8872005](#) [M80-8870601](#) [M80-8871801](#) [M80-8871805](#) [M80-8871001](#) [M80-8871401](#) [M80-8871405](#) [M80-8871201](#) [M80-8870801](#) [M80-8871601](#) [M80-8871605](#) [M80-8870401](#)