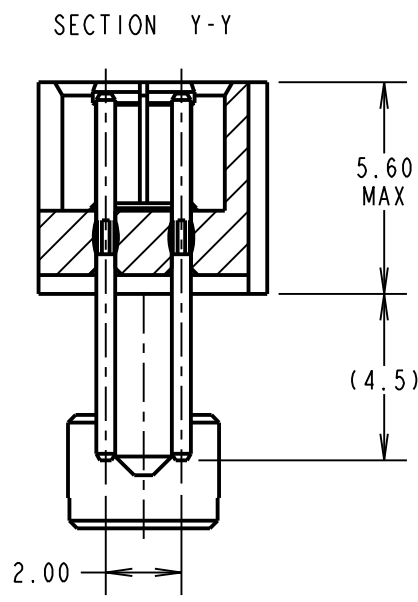
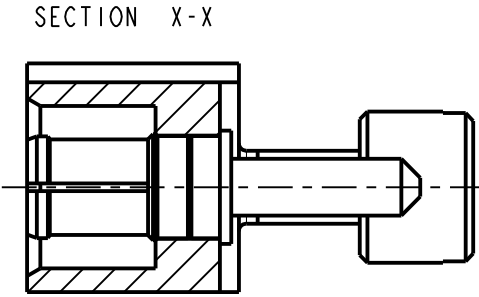
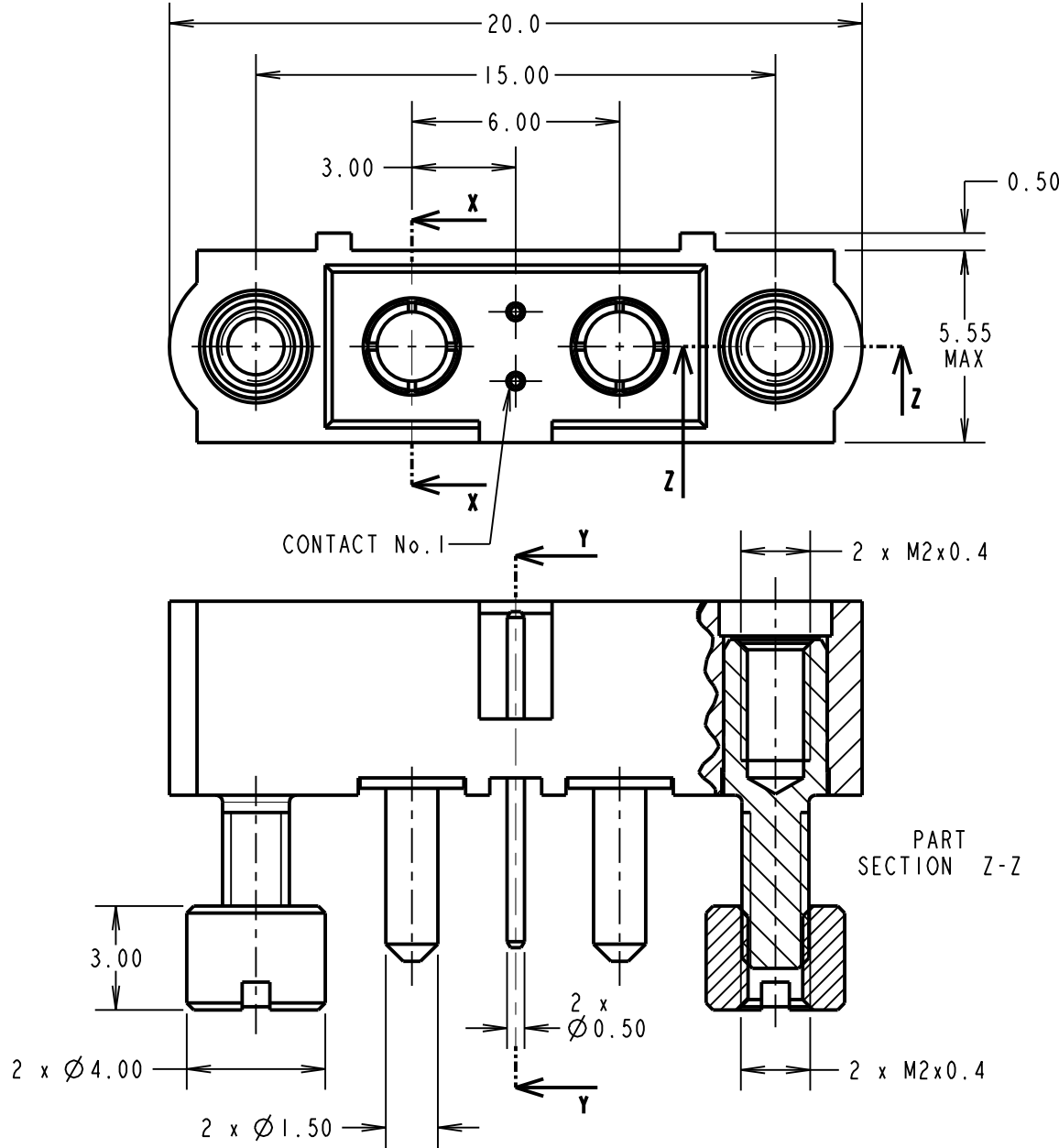


Customer Information Sheet

DRAWING No.: M80-5T204M3-11-332 SHEET 2 OF 2 IF IN DOUBT - ASK © NOT TO SCALE THIRD ANGLE PROJECTION ALL DIMENSIONS IN mm



SPECIFICATIONS:

MATERIAL:

- MOULDING = GLASS-FILLED PPS, UL94V-0, BLACK
- SIGNAL PIN = PHOSPHOR BRONZE
- POWER CONTACT = COPPER ALLOY
- JACKSCREW = STAINLESS STEEL

FINISH:

- SIGNAL PIN = 0.75µ GOLD ON CONTACT AREA, 3µ 100% TIN OVER NICKEL ON TAILS
- POWER CONTACT = GOLD

ELECTRICAL:

- SIGNAL CONTACT:
- CURRENT RATING AT 25°C = 3.0A MAX
- CURRENT RATING AT 85°C = 2.2A MAX
- CONTACT RESISTANCE = 25mΩ MAX
- POWER CONTACT:
- CURRENT RATING = 20A MAX
- CONTACT RESISTANCE = 6mΩ MAX
- WORKING VOLTAGE = 800V AC/DC
- VOLTAGE PROOF = 1200V AC/DC
- INSULATION RESISTANCE = 100MΩ MIN

MECHANICAL:

- DURABILITY = 500 OPERATIONS

SIGNAL CONTACT:

- INSERTION FORCE = 2.0N MAX
- WITHDRAWAL FORCE = 0.2N MIN

POWER CONTACT:

- INSERTION FORCE = 8N MAX
- WITHDRAWAL FORCE = 0.5N MIN

ENVIRONMENTAL:

- TEMPERATURE RANGE = -55°C TO +125°C

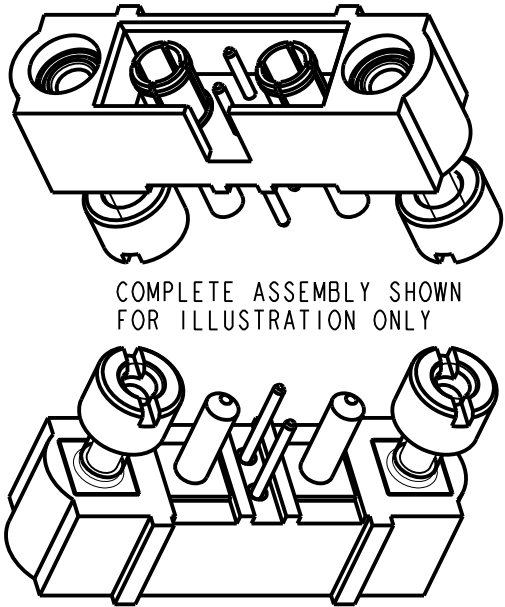
PACKING:

- TUBE

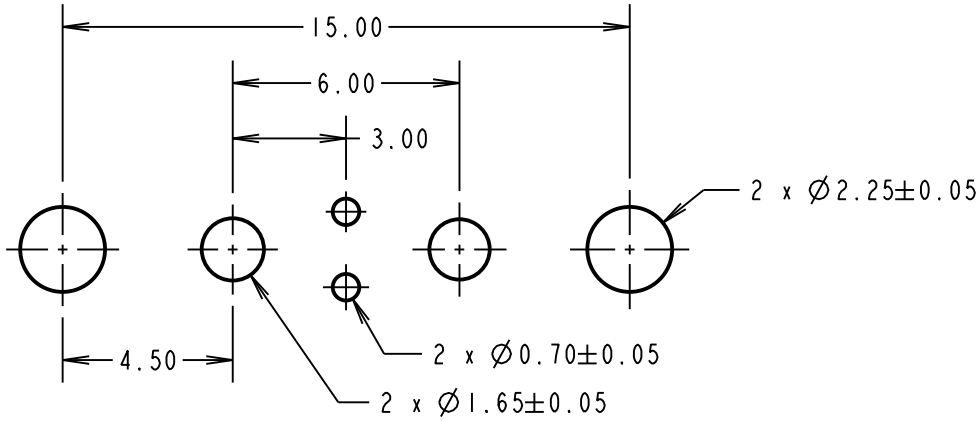
FOR COMPLETE SPECIFICATION, SEE COMPONENT SPECIFICATION C005XX (LATEST ISSUE)

NOTES:

1. CONNECTORS ARE SUPPLIED WITH NUTS LOOSE.



RECOMMENDED PCB LAYOUT



LS	2	24.10.17	13269
NAME	ISS.	DATE	C/NOTE
APPROVED: LS			
CHECKED: SB			
DRAWN: B. M. KENT			
CUSTOMER REF.:			
ASSEMBLY DRG:			

HARWIN

www.harwin.com
technical@harwin.com

THIS DRAWING AND ANY INFORMATION OR DESCRIPTIVE MATTER SET OUT HEREON ARE CONFIDENTIAL AND COPYRIGHT PROPERTY OF THE HARWIN GROUP AND MUST NOT BE DISCLOSED, LOANED, COPIED OR USED FOR MANUFACTURING, TENDERING OR FOR ANY OTHER PURPOSE WITHOUT THEIR WRITTEN PERMISSION.

TOLERANCES

X. = ±1mm
X.X = ±0.50mm
X.XX = ±0.10mm
X.XXX = ±0.01mm

ANGLES = ±5°

UNLESS STATED

MATERIAL:

SEE ABOVE

FINISH: SEE ABOVE

S/AREA: mm²

TITLE: JACKSCREW DATAMATE MIXED TECHNOLOGY VERT PC TAIL MALE ASSEMBLY (BOARD MOUNT)

DRAWING NUMBER: M80-5T202M3-11-332

SHT 2 OF 2

Mouser Electronics

Authorized Distributor

Click to View Pricing, Inventory, Delivery & Lifecycle Information:

Harwin:

[M80-5T202M3-11-332](#)