

# Customer Information Sheet

DRAWING No.: M80-5T10405MI-04-331-00-000

SHEET 2 OF 2

IF IN DOUBT - ASK

©

NOT TO SCALE

### THIRD ANGLE PROJECTION

ALL DIMENSIONS IN mm

**SPECIFICATIONS:**

MATERIAL:  
MOULDING: GLASS FILLED PPS, UL94V-0, BLACK  
SIGNAL CONTACT: PHOSPHOR BRONZE  
POWER CONTACT: COPPER ALLOY  
JACKSCREW: STAINLESS STEEL

FINISH:  
SIGNAL CONTACT:  
0.75 $\mu$  GOLD  
POWER CONTACT: GOLD

ELECTRICAL:  
WORKING VOLTAGE = 800V AC/DC  
VOLTAGE PROOF = 1200V AC/DC  
INSULATION RESISTANCE = 100M $\Omega$  MIN  
SIGNAL CONTACT:  
CURRENT RATING AT 25°C = 3.0A MAX  
CURRENT RATING AT 85°C = 2.2A MAX  
CONTACT RESISTANCE = 25m $\Omega$  MAX

POWER CONTACT:  
CONTACT RESISTANCE  $6\text{m}\Omega$  MAX  
CURRENT RATING = 20A MAX

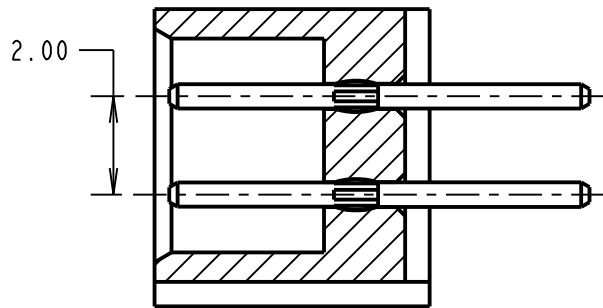
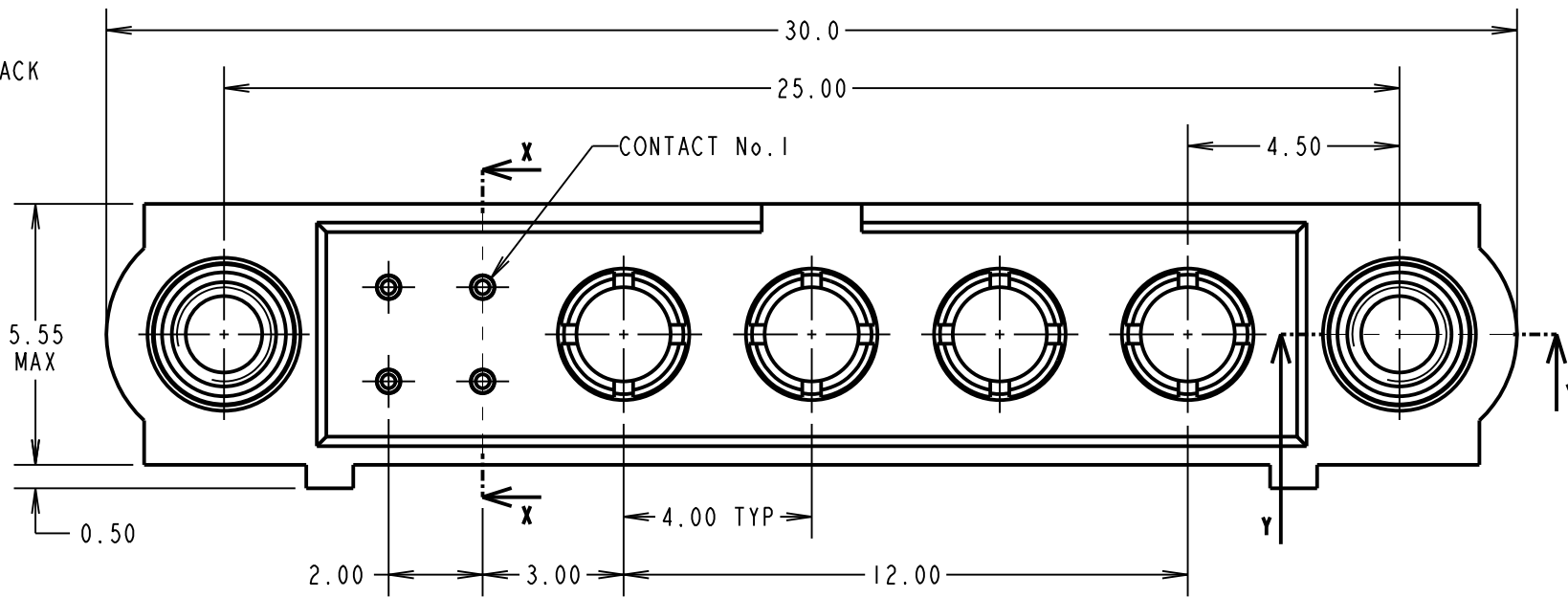
MECHANICAL:  
DURABILITY = 500 OPERATIONS  
SIGNAL CONTACT:  
INSERTION FORCE = 2.0N MAX  
WITHDRAWAL FORCE = 0.2N MIN

POWER CONTACT:  
INSERTION FORCE = 8N MAX  
WITHDRAWAL FORCE = 0.5N MIN

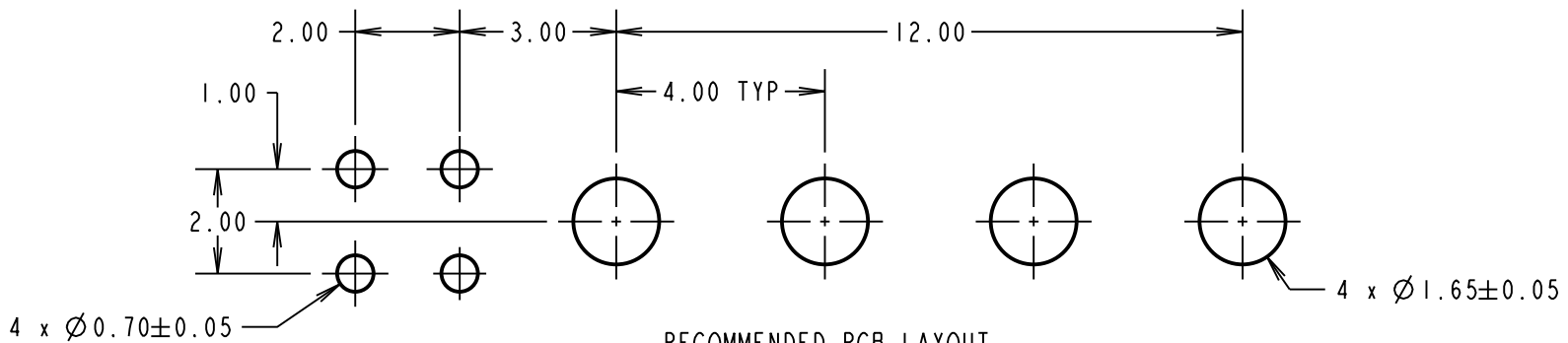
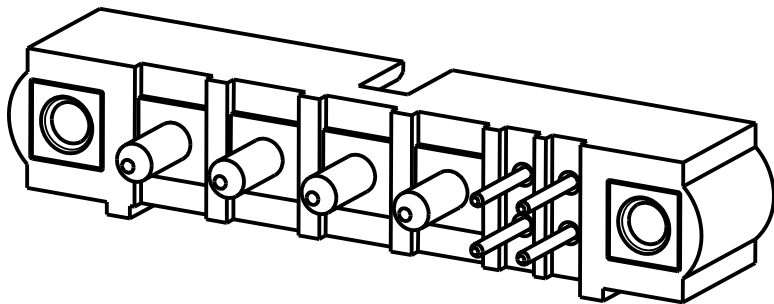
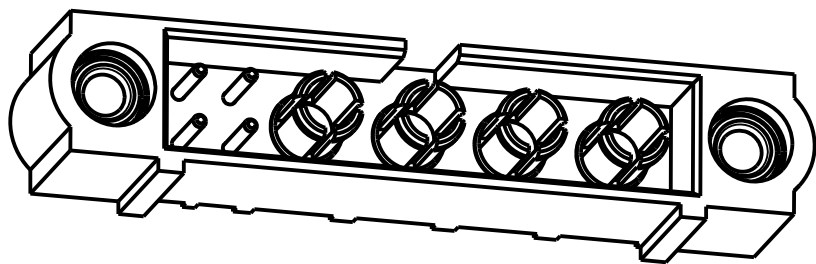
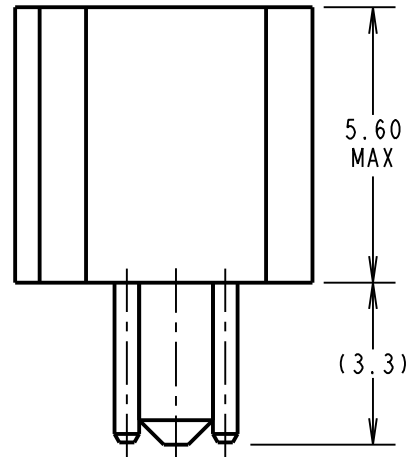
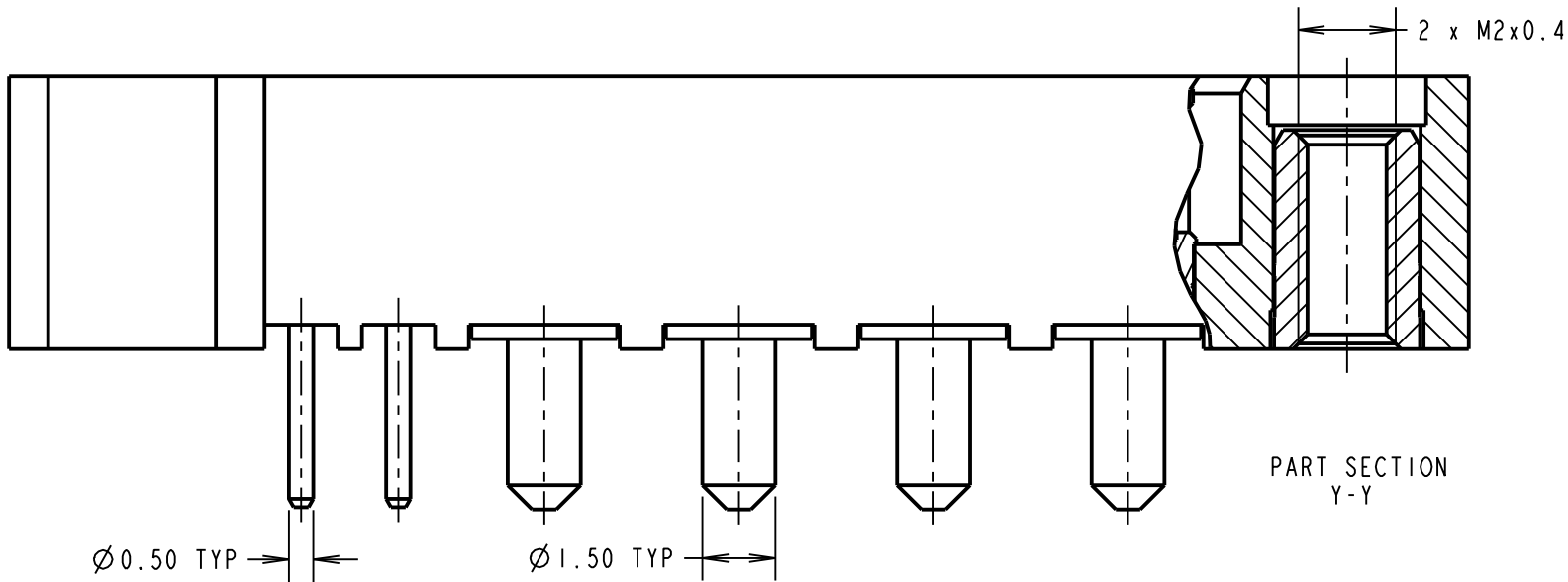
ENVIRONMENTAL:  
TEMPERATURE RANGE = -55°C TO +125°C

PACKING:

TUBE  
FOR COMPLETE SPECIFICATION SEE COMPONENT  
SPECIFICATION C005XX (LATEST ISSUE)



SECTION X-X



## RECOMMENDED PCB LAYOUT

# HARWIN

www.harwin.com  
technical@harwin.com

THIS DRAWING AND ANY INFORMATION OR DESCRIPTIVE MATTER SET OUT HEREON ARE CONFIDENTIAL AND COPYRIGHT PROPERTY OF THE HARWIN GROUP AND MUST NOT BE DISCLOSED, LOANED, COPIED OR USED FOR MANUFACTURING, TENDERING OR FOR ANY OTHER PURPOSE WITHOUT THEIR WRITTEN PERMISSION.

**TOLERANCES**  
X. =  $\pm 1\text{mm}$   
X.X =  $\pm 0.50\text{mm}$   
X.XX =  $\pm 0.10\text{mm}$   
X.XXX =  $\pm 0.01\text{mm}$   
**ANGLES =  $\pm 5^\circ$**   
**UNLESS STATED**

**MATERIAL:**

SEE ABOVE

**FINISH:**

SEE ABOVE

S/AREA:

mm<sup>2</sup>

TITLE: DATAMATE MIX-TEK  
MALE ASSEMBLY  
WITH JACKSCREW

DRAWING NUMBER:

**M80-5T10405MI-04-331-00-000**

SHT  
OF 2

# Mouser Electronics

Authorized Distributor

Click to View Pricing, Inventory, Delivery & Lifecycle Information:

Harwin:

[M80-5T10405M1-04-331-00-000](#)