

Customer Information Sheet

DRAWING No.: M80-4C13405FC-01-325-00-000

IF IN DOUBT - ASK

©

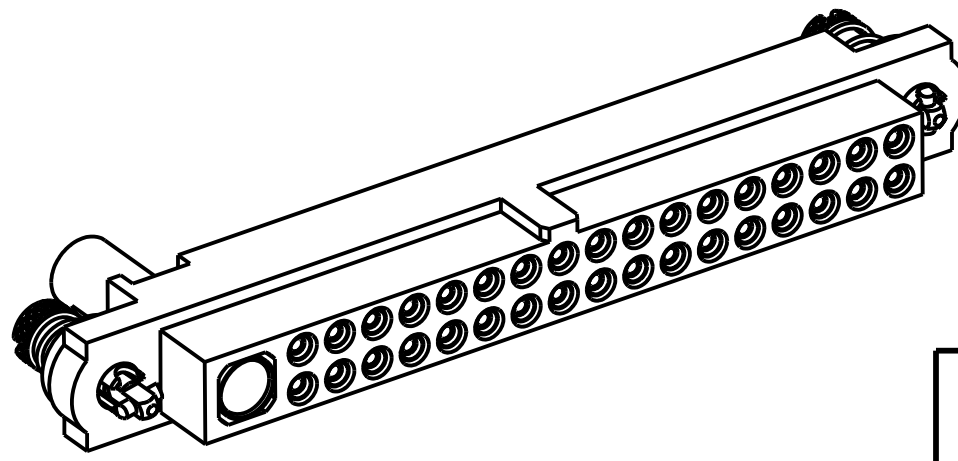
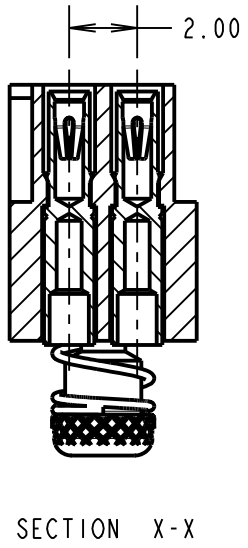
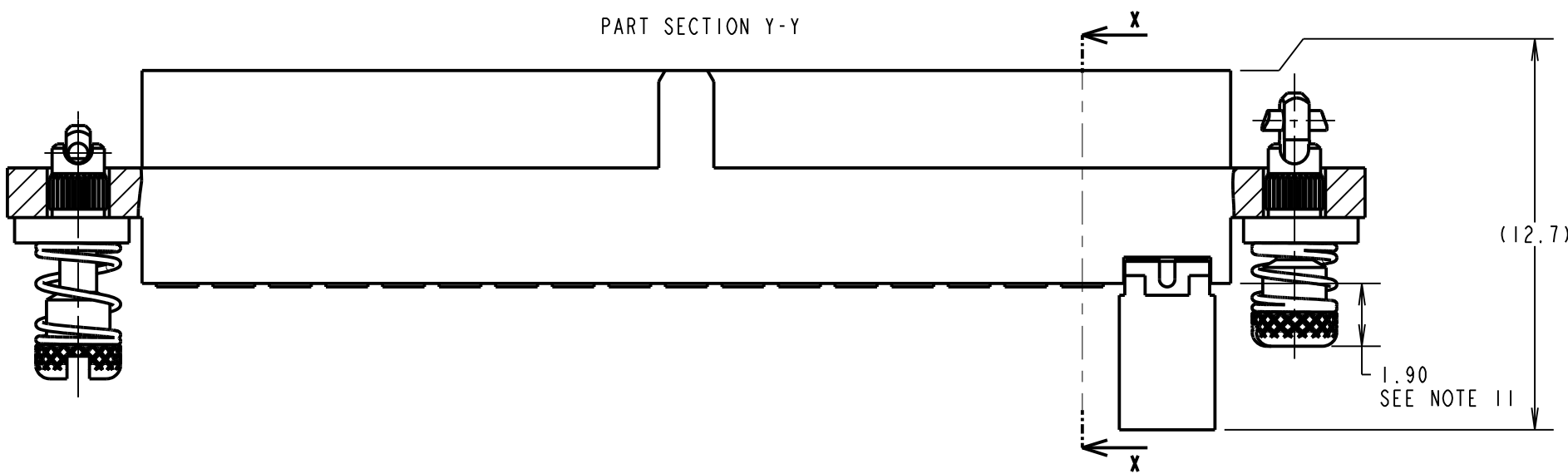
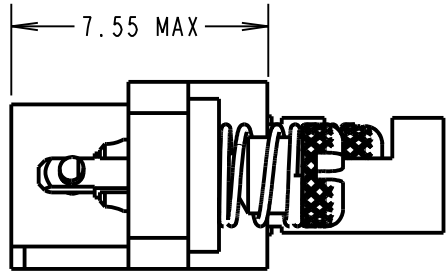
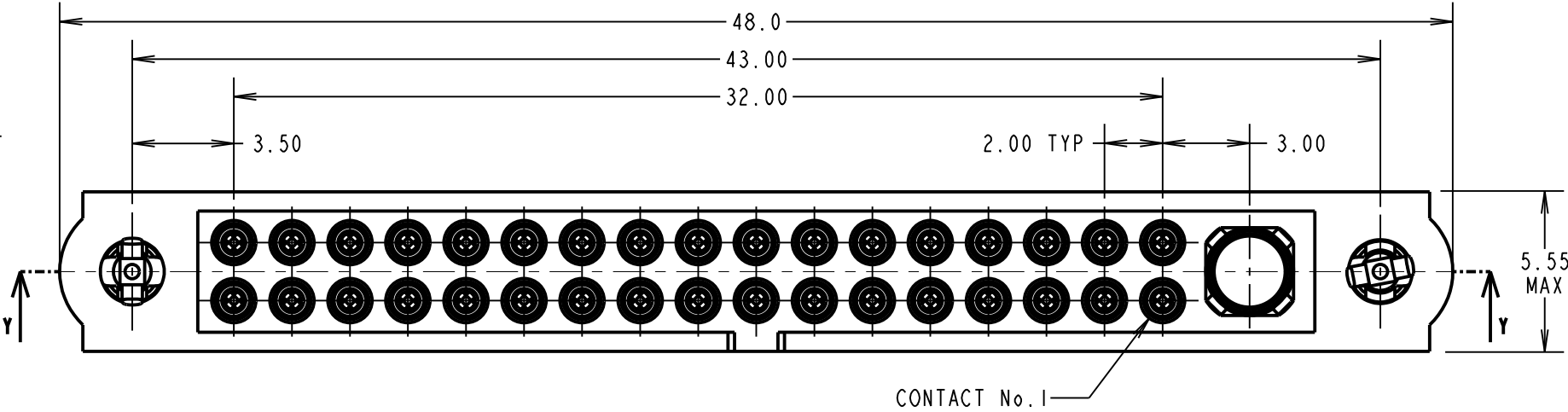
NOT TO SCALE

THIRD ANGLE PROJECTION

ALL DIMENSIONS IN mm

SPECIFICATIONS:

MATERIAL:
MOULDING: GLASS FILLED PPS, UL94V-0, BLACK
SIGNAL CONTACT:
CLIP = BERYLLIUM COPPER
SHELL = BRASS
POWER CONTACT:
BODY = COPPER ALLOY
LATCHING COLLAR = BERYLLIUM COPPER
10ILOK SCREW, COLLAR = STAINLESS STEEL
SPRING = MUSIC WIRE
FINISH:
SIGNAL CONTACT:
CLIP = 0.3µm GOLD
SHELL = 0.25-0.3µm GOLD
POWER CONTACT:
BODY = GOLD
LATCHING COLLAR = NICKEL
SPRING = TIN
ELECTRICAL:
WORKING VOLTAGE = 800V AC/DC
VOLTAGE PROOF = 1200V AC/DC
INSULATION RESISTANCE = 100MΩ MIN
SIGNAL CONTACT:
CURRENT RATING AT 25°C = 3.3A MAX
CURRENT RATING AT 85°C = 2.6A MAX
CONTACT RESISTANCE = 25mΩ MAX
POWER CONTACT:
CONTACT RESISTANCE = 6mΩ MAX
CURRENT RATING = 20A MAX WITH 12AWG
CONTACT AS SPECIFIED
MECHANICAL:
DURABILITY = 500 OPERATIONS
SIGNAL CONTACT:
INSERTION FORCE = 2.0N MAX
WITHDRAWAL FORCE = 0.2N MIN
POWER CONTACT:
INSERTION FORCE = 8.0N MAX
WITHDRAWAL FORCE = 0.5N MIN
ENVIRONMENTAL:
TEMPERATURE RANGE = -55°C TO +125°C
PACKING:
BAG
FOR COMPLETE SPECIFICATION SEE COMPONENT
SPECIFICATION C005XX (LATEST ISSUE)



- NOTES:
- CONNECTORS ARE SUPPLIED WITH CONTACTS LOOSE.
 - FOR EXTRA SIGNAL CONTACTS, USE PART NUMBER M80-0130005.
 - RECOMMENDED SIGNAL WIRE TYPE = BS 3G 210 TYPE A, PTFE INSULATED 24-28 AWG. MAX INSULATION DIAMETER = Ø1.10mm. STRIP WIRE BY 2.00mm FOR CRIMPING.
 - RECOMMENDED HAND CRIMP TOOL FOR SIGNAL CONTACTS = M22520/2-01 WITH POSITIONER T5747.
 - SIGNAL CONTACT INSERTION AND EXTRACTION TOOL = Z80-280.
 - FOR EXTRA POWER CONTACTS, USE PART NUMBER M80-325
 - POWER CONTACT WIRE, STRIP BY 5.00mm MINIMUM
 - POWER CONTACT EXTRACTION TOOL = Z80-290
 - INSTRUCTION SHEETS ARE AVAILABLE.
 - SPRING LOAD WHEN SOLID = 2.642N. SPRING RATE = 1.32N/mm.
 - LENGTH WILL BE 1.90mm WHEN 10ILOK SCREWS ARE ENGAGED WITH RETAINERS IN MATING CONNECTOR.

RTP	3	16.05.19	21531
NAME	ISS.	DATE	C/NOTE
APPROVED: R.PORTLOCK			
CHECKED: M.RUDKIN			
DRAWN: R.ADDE			
CUSTOMER REF.:			
ASSEMBLY DRG:			



www.harwin.com
technical@harwin.com

THIS DRAWING AND ANY INFORMATION OR DESCRIPTIVE MATTER SET OUT HEREON ARE CONFIDENTIAL AND COPYRIGHT PROPERTY OF THE HARWIN GROUP AND MUST NOT BE DISCLOSED, LOANED, COPIED OR USED FOR MANUFACTURING, TENDERING OR FOR ANY OTHER PURPOSE WITHOUT THEIR WRITTEN PERMISSION.	TOLERANCES		MATERIAL:		TITLE: JACKSCREW DATAMATE MIXED TECHNOLOGY CRIMP FEMALE ASSEMBLY	
	X. = ±1mm		SEE ABOVE		DRAWING NUMBER: M80-4C13405FC-01-325-00-000	
	X.X = ±0.50mm					
	X.XX = ±0.20mm					
	X.XXX = ±0.01mm		FINISH: SEE ABOVE		SHT 2 OF 2	
ANGLES = ±5°		S/AREA: mm ²				
UNLESS STATED						

Mouser Electronics

Authorized Distributor

Click to View Pricing, Inventory, Delivery & Lifecycle Information:

Harwin:

[M80-4C13405FC-01-325-00-000](#)