

Customer Information Sheet

DRAWING No.: M80-459XX98

IF IN DOUBT - ASK

©

NOT TO SCALE

THIRD ANGLE PROJECTION

ALL DIMENSIONS IN mm

SPECIFICATION:

MATERIAL:
HOUSING = GLASS-FILLED POLYAMIDE 46,
UL94V-0, BLACK
10ILOK SCREW, COLLAR = STAINLESS STEEL
SPRING = MUSIC WIRE

FINISH:
SPRING = TIN COATED

ELECTRICAL:
CURRENT RATING AT 25°C = 3.3A MAX
CURRENT RATING AT 85°C = 2.6A MAX
WORKING VOLTAGE = 800V AC/DC
VOLTAGE PROOF = 1200V AC/DC
CONTACT RESISTANCE = 25mΩ MAX
INSULATION RESISTANCE = 100MΩ MIN

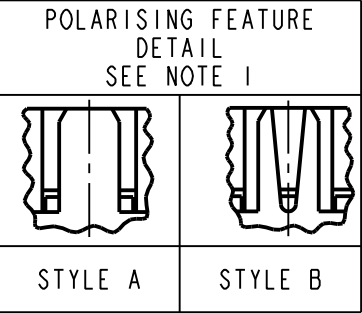
MECHANICAL:
DURABILITY = 400 OPERATIONS
INSERTION FORCE = 2.0N MAX
WITHDRAWAL FORCE = 0.2N MIN

ENVIRONMENTAL:
TEMPERATURE RANGE = -55°C TO +125°C

PACKING:
BAG

FOR COMPLETE SPECIFICATION,
SEE COMPONENT SPECIFICATION
C040XX (LATEST ISSUE)

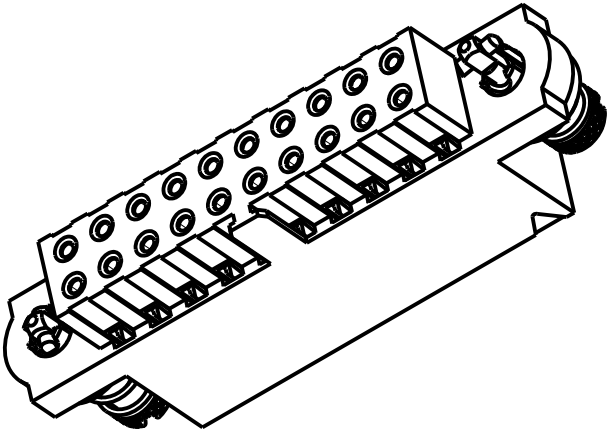
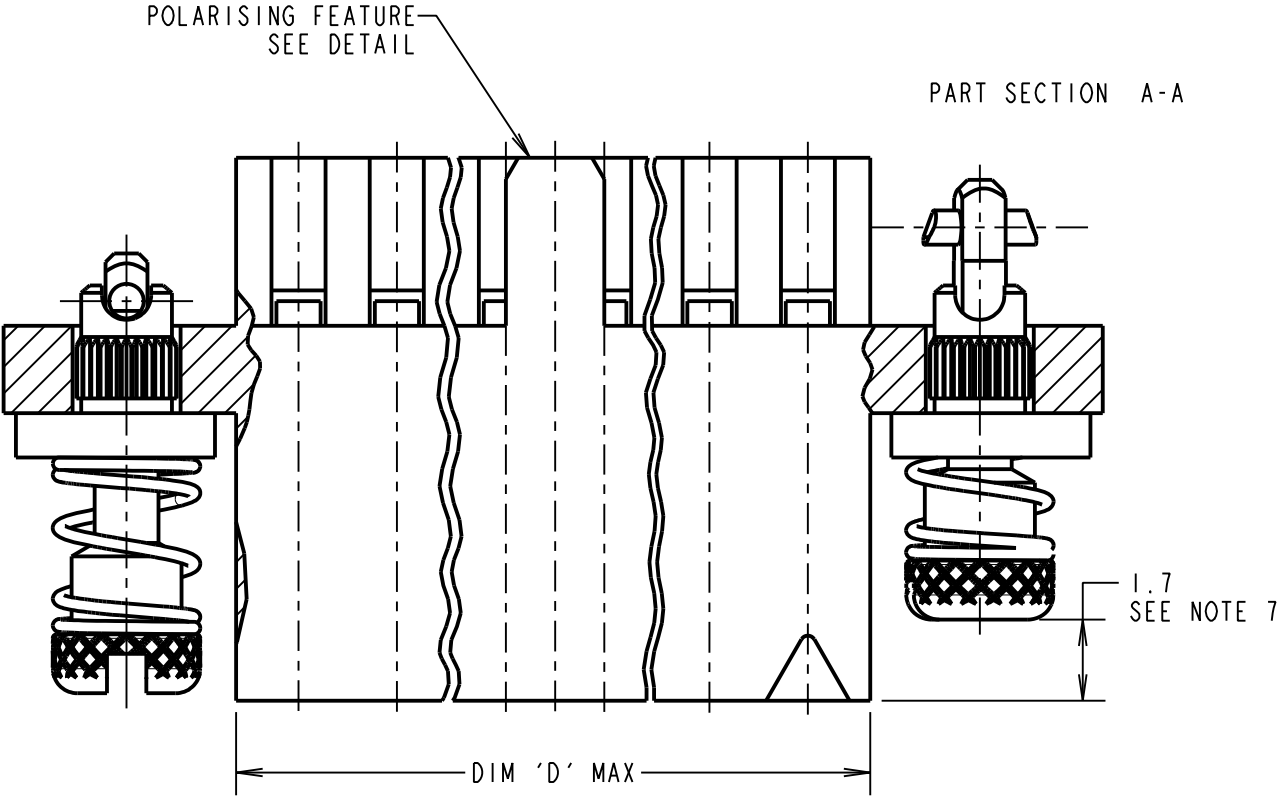
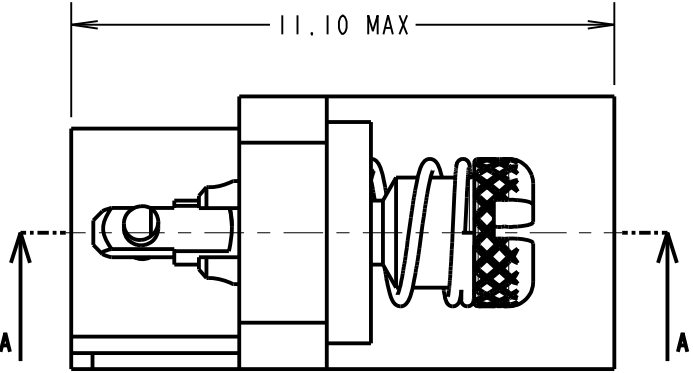
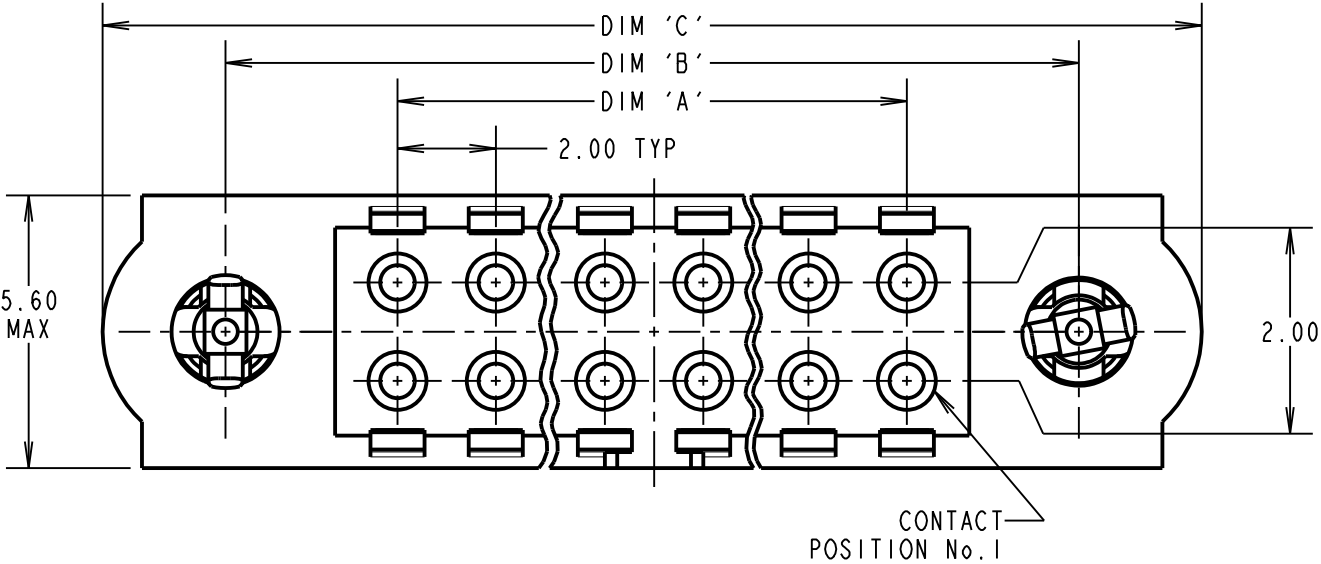
- NOTES:**
1. POLARISING FEATURE STYLE DEPENDANT ON
NUMBER OF CONTACT POSITIONS.
 2. HOUSING TO BE USED WITH DATAMATE TRIO-TEK
CRIMP CONTACTS:
M80-25300XX = 24-22 AWG REELED
M80-25400XX = 28-26 AWG REELED
M80-28300XX = 24-22 AWG LOOSE
M80-28400XX = 28-26 AWG LOOSE
 3. THE SPECIFICATION APPLIES WHEN HOUSING IS
USED WITH THE ABOVE CONTACTS.
 4. CONTACT EXTRACTION TOOL = Z80-258.
 5. INSTRUCTION SHEETS ARE AVAILABLE.
 6. SPRING LOAD WHEN SOLID = 2.64N.
SPRING RATE = 1.32N/mm.
 7. LENGTH WILL BE 1.7mm WHEN 10I-SCREWS ARE
ENGAGED WITH RETAINERS IN MATING CONNECTOR.



DIMENSION	CALCULATION
DIM 'A'	TOTAL No. OF CONTACT POSITIONS - 2
DIM 'B'	TOTAL No. OF CONTACT POSITIONS + 5
DIM 'C'	TOTAL No. OF CONTACT POSITIONS + 10
DIN 'D'	TOTAL No. OF CONTACT POSITIONS + 0.59

EXAMPLE: CONNECTOR WITH 20 CONTACT POSITIONS, M80-4592098

DIM 'A' = 18.00mm, DIM 'B' = 25.00mm, DIM 'C' = 30.00mm



ORDER CODE:
M80-459XX98

TOTAL No. OF
CONTACT POSITIONS
04, 06, 08, 10, 12, 14, 20,
26, 28, 34, 42, 50

PLEASE CONTACT
datamate@harwin.com
FOR CURRENT AVAILABILITY

RTP	7	17.05.19	21531
NAME	ISS.	DATE	C/NOTE
APPROVED:	R.PORTLOCK		
CHECKED:	M.RUDKIN		
DRAWN:	S.FLOWER		
CUSTOMER REF.:			
ASSEMBLY DRG:			

HARWIN

www.harwin.com
technical@harwin.com

THIS DRAWING AND ANY
INFORMATION OR DESCRIPTIVE
MATTER SET OUT HEREON ARE
CONFIDENTIAL AND COPYRIGHT
PROPERTY OF THE HARWIN
GROUP AND MUST NOT BE
DISCLOSED, LOANED, COPIED
OR USED FOR MANUFACTURING,
TENDERING OR FOR ANY
OTHER PURPOSE WITHOUT
THEIR WRITTEN PERMISSION.

TOLERANCES
X. = ±1mm
X.X = ±0.50mm
X.XX = ±0.20mm
X.XXX = ±0.01mm

ANGLES = ±5°
UNLESS STATED

MATERIAL:
SEE ABOVE

FINISH: SEE ABOVE

S/AREA: mm²

TITLE: DATAMATE TRIO-TEK
FEMALE CRIMP HOUSING
WITH 10ILOK JACKSCREWS

DRAWING NUMBER:
M80-459XX98

Mouser Electronics

Authorized Distributor

Click to View Pricing, Inventory, Delivery & Lifecycle Information:

Harwin:

[M80-4590898](#) [M80-4591298](#) [M80-4592098](#) [M80-4590698](#) [M80-4591498](#) [M80-4592698](#) [M80-4593498](#) [M80-4591098](#) [M80-4592898](#) [M80-4594298](#) [M80-4590498](#) [M80-4595098](#)