

Customer Information Sheet

DRAWING No.: M50-470XX45

SHEET 2 OF 2

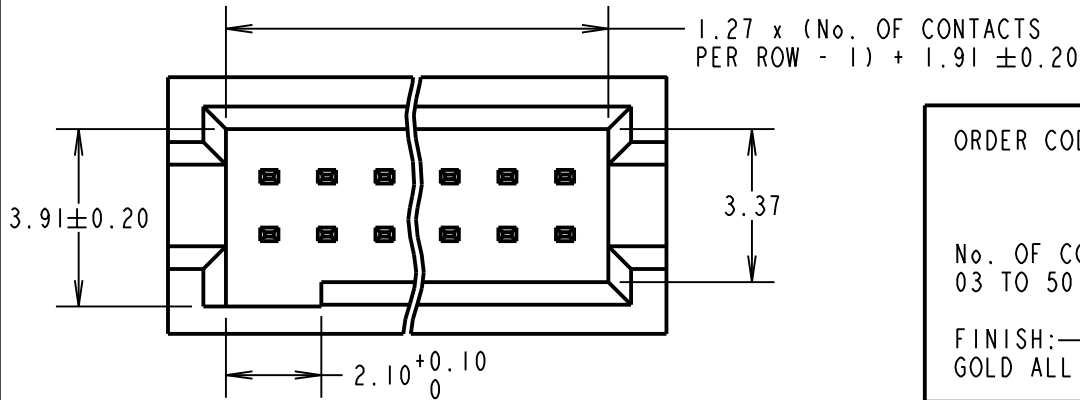
IF IN DOUBT - ASK

©

NOT TO SCALE

THIRD ANGLE PROJECTION

ALL DIMENSIONS IN mm



ORDER CODE:
M50-470XX45

No. OF CONTACTS PER ROW: _____

03 TO 50

FINISH: _____

GOLD ALL OVER CONTACT

SPECIFICATIONS:

MATERIAL:
MOULDING = LCP UL94V-0, BLACK
CONTACT = COPPER ALLOY

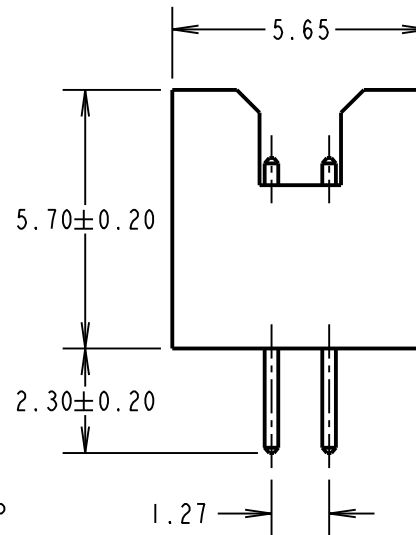
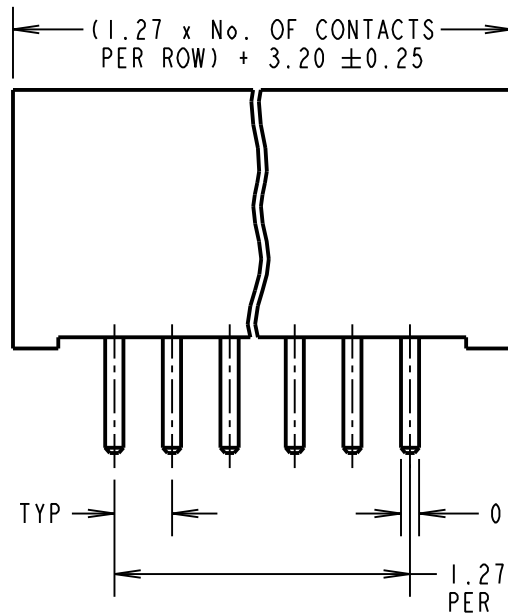
FINISH:
CONTACT = GOLD

ELECTRICAL:
CURRENT RATING = 1A
VOLTAGE PROOF = 300V AC FOR ONE MINUTE
CONTACT RESISTANCE = 20mΩ MAX
INSULATION RESISTANCE = 1000MΩ MIN

MECHANICAL:
DURABILITY = 100 CYCLES MIN

ENVIRONMENTAL:
OPERATING TEMPERATURE = -40°C TO +105°C

PACKING:
TUBE
FOR COMPLETE SPECIFICATION, SEE COMPONENT SPECIFICATION C029XX (LATEST ISSUE).



OBSOLETE
All other size/finish combinations not listed below

NOTES:

1. RECOMMENDED PCB HOLE SIZE = $\varnothing 0.65 \pm 0.05$ mm.
2. ALL TOLERANCES ARE ± 0.15 UNLESS OTHERWISE STATED.

Active products:

- M50-4700545
- M50-4700845
- M50-4701045
- M50-4701545
- M50-4701745
- M50-4702045

SB	7	29.07.13	11873
NAME	ISS.	DATE	C/NOTE
APPROVED:		S.BENNETT	
CHECKED:		S.FLOWER	
DRAWN:		J. ENRIGHT	
CUSTOMER REF.:			
ASSEMBLY DRG:			

HARWIN

www.harwin.com
technical@harwin.com

THIS DRAWING AND ANY INFORMATION OR DESCRIPTIVE MATTER SET OUT HEREON ARE CONFIDENTIAL AND COPYRIGHT PROPERTY OF THE HARWIN GROUP AND MUST NOT BE DISCLOSED, LOANED, COPIED OR USED FOR MANUFACTURING, TENDERING OR FOR ANY OTHER PURPOSE WITHOUT THEIR WRITTEN PERMISSION.

TOLERANCES
~~X = ± 1mm~~
~~X.X = ± 0.25mm~~
~~X.XX = ± 0.10mm~~
~~X.XXX = ± 0.01mm~~
 ANGLES = ± 5°
 UNLESS STATED

MATERIAL:

SEE ABOVE

FINISH:

SEE ABOVE

S/AREA:

mm²

TITLE:

1.27mm PITCH DIL VERTICAL PIN HEADER ASSY

DRAWING NUMBER:

M50-470XX45

SHT
2 OF 2

Mouser Electronics

Authorized Distributor

Click to View Pricing, Inventory, Delivery & Lifecycle Information:

Harwin:

[M50-4703845](#) [M50-4703045](#) [M50-4703445](#) [M50-4703245](#) [M50-4703645](#) [M50-4703545](#) [M50-4703145](#) [M50-4703945](#) [M50-4703745](#) [M50-4703345](#) [M50-4704045](#) [M50-4702645](#) [M50-4701445](#) [M50-4701845](#) [M50-4700645](#) [M50-4702245](#) [M50-4701045](#) [M50-4702045](#) [M50-4701645](#) [M50-4702845](#) [M50-4702445](#) [M50-4701245](#) [M50-4700845](#) [M50-4700745](#) [M50-4701945](#) [M50-4702345](#) [M50-4701145](#) [M50-4701545](#) [M50-4702745](#) [M50-4702545](#) [M50-4701345](#) [M50-4700945](#) [M50-4702945](#) [M50-4701745](#) [M50-4700545](#) [M50-4702145](#)