

# Customer Information Sheet

DRAWING No.: M20-11600XX

SHEET 2 OF 2

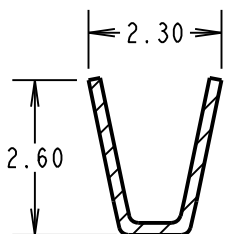
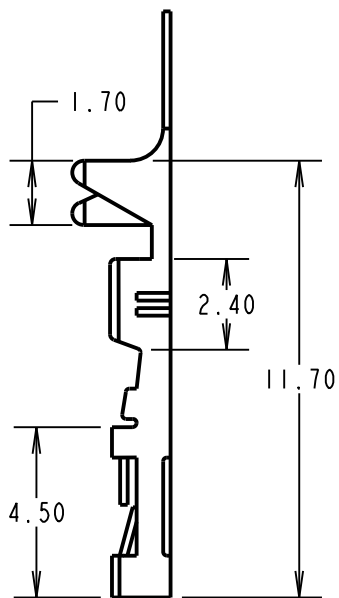
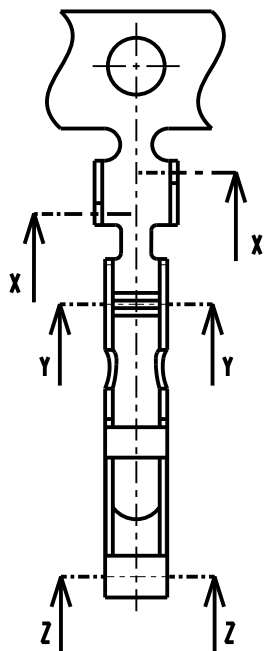
IF IN DOUBT - ASK

©

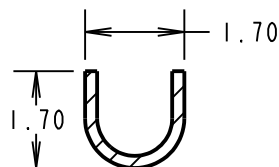
NOT TO SCALE

THIRD ANGLE PROJECTION

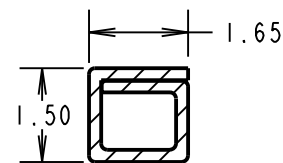
ALL DIMENSIONS IN mm



SECTION X-X

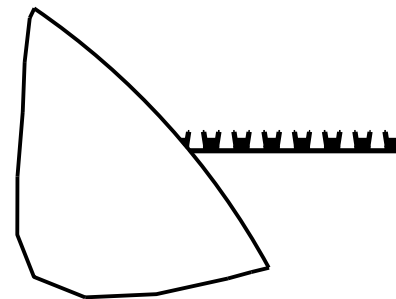


SECTION Y-Y

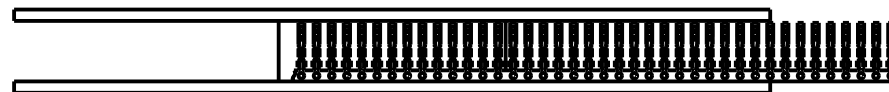


SECTION Z-Z

ORDER CODE:  
**M20-11600XX**  
FINISH: \_\_\_\_\_  
42 = GOLD + 100% TIN  
46 = 100% TIN OVER NICKEL



COMPONENTS REELED AS SHOWN



**NOTES:**

- FOR COMPLETE SPECIFICATION, SEE COMPONENT SPECIFICATION COO1XX (LATEST ISSUE).
- TO BE USED WITH CRIMP MOULDINGS M20-106XX00 AND M20-107XX00. SEE MOULDING DRAWING FOR COMPONENT SPECIFICATION.
- PRODUCT SUPPLIED ON REELS OF 10K.
- STRIP WIRE BY 3.0 - 4.0mm.
- DIAMETER OF WIRE INSULATION =  $\varnothing$  1.60-0.90mm.
- ACCEPTS WIRE RANGE 22-30 AWG.
- PITCH BETWEEN CRIMPS ON REEL 7.0mm.
- TO BE USED WITH HAND TOOL Z20-320, SEE INSTRUCTION SHEET IS-15 FOR DETAILS.
- RECOMMENDED CONDUCTOR CRIMP HEIGHTS:  
FOR 26 - 30 AWG = 0.69 - 0.75mm  
FOR 22 - 24 AWG = 0.83 - 0.89mm

**SPECIFICATIONS:**

MATERIAL = BRASS  
FINISH:  
42 = GOLD + 100% TIN  
46 = 100% TIN OVER NICKEL  
MECHANICAL:  
WITHDRAWAL FORCE = 1.5-0.8N

SB	13	14.06.12	11756
NAME	ISS.	DATE	C/NOTE
APPROVED:		S.BENNETT	
CHECKED:		M.PLESTED	
DRAWN:		W. J. BOURNE	
CUSTOMER REF.:			
ASSEMBLY DRG:			

**HARWIN**

www.harwin.com  
technical@harwin.com

THIS DRAWING AND ANY INFORMATION OR DESCRIPTIVE MATTER SET OUT HEREON ARE CONFIDENTIAL AND COPYRIGHT PROPERTY OF THE HARWIN GROUP AND MUST NOT BE DISCLOSED, LOANED, COPIED OR USED FOR MANUFACTURING, TENDERING OR FOR ANY OTHER PURPOSE WITHOUT THEIR WRITTEN PERMISSION.

**TOLERANCES**

X. =  $\pm$ 1mm  
X.X =  $\pm$ 0.25mm  
X.XX =  $\pm$ 0.10mm  
X.XXX =  $\pm$ 0.01mm

ANGLES =  $\pm$ 5°  
UNLESS STATED

**MATERIAL:**

SEE ABOVE

**FINISH:**

SEE ABOVE

**S/AREA:**

mm<sup>2</sup>

**TITLE:**

2.54mm FEMALE CRIMP TERMINAL (REELED)

**DRAWING NUMBER:**

**M20-11600XX**

SHT

2 OF 2

# Mouser Electronics

Authorized Distributor

Click to View Pricing, Inventory, Delivery & Lifecycle Information:

Harwin:

[M20-1160042](#) [M20-1160046](#)