

Customer Information Sheet

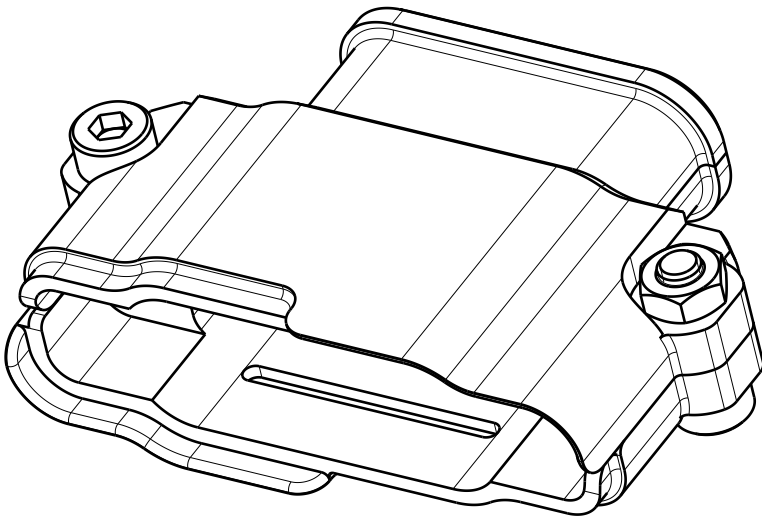
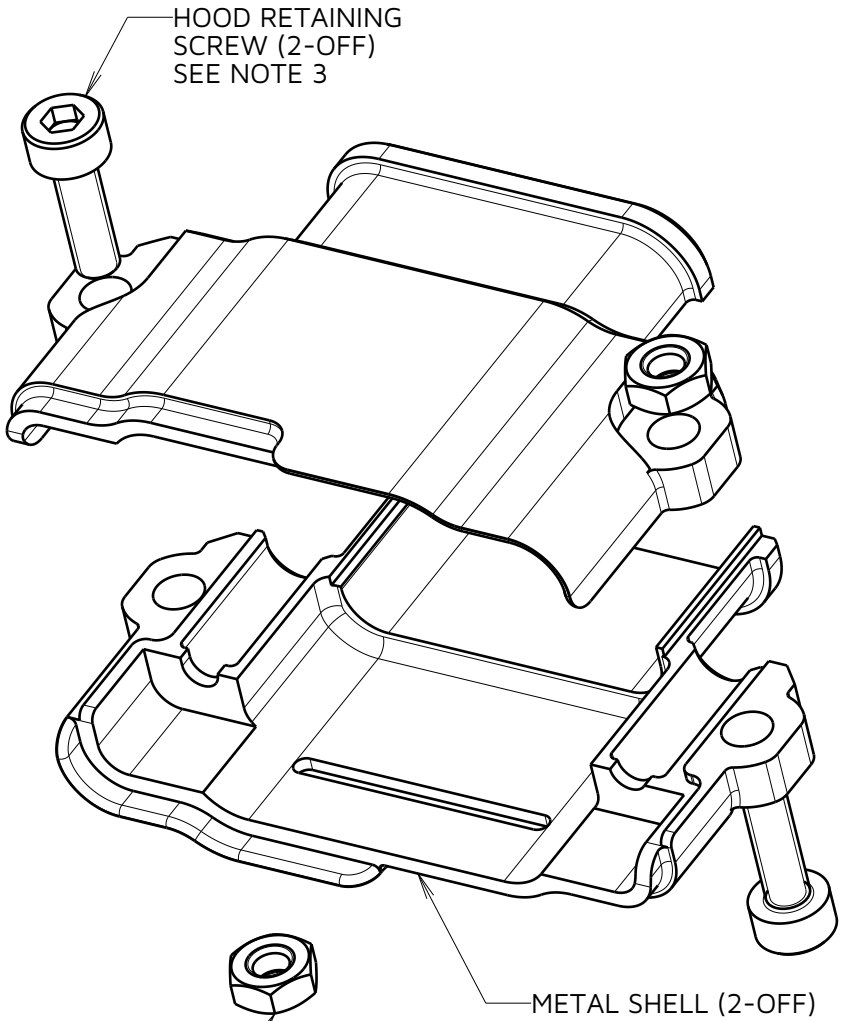
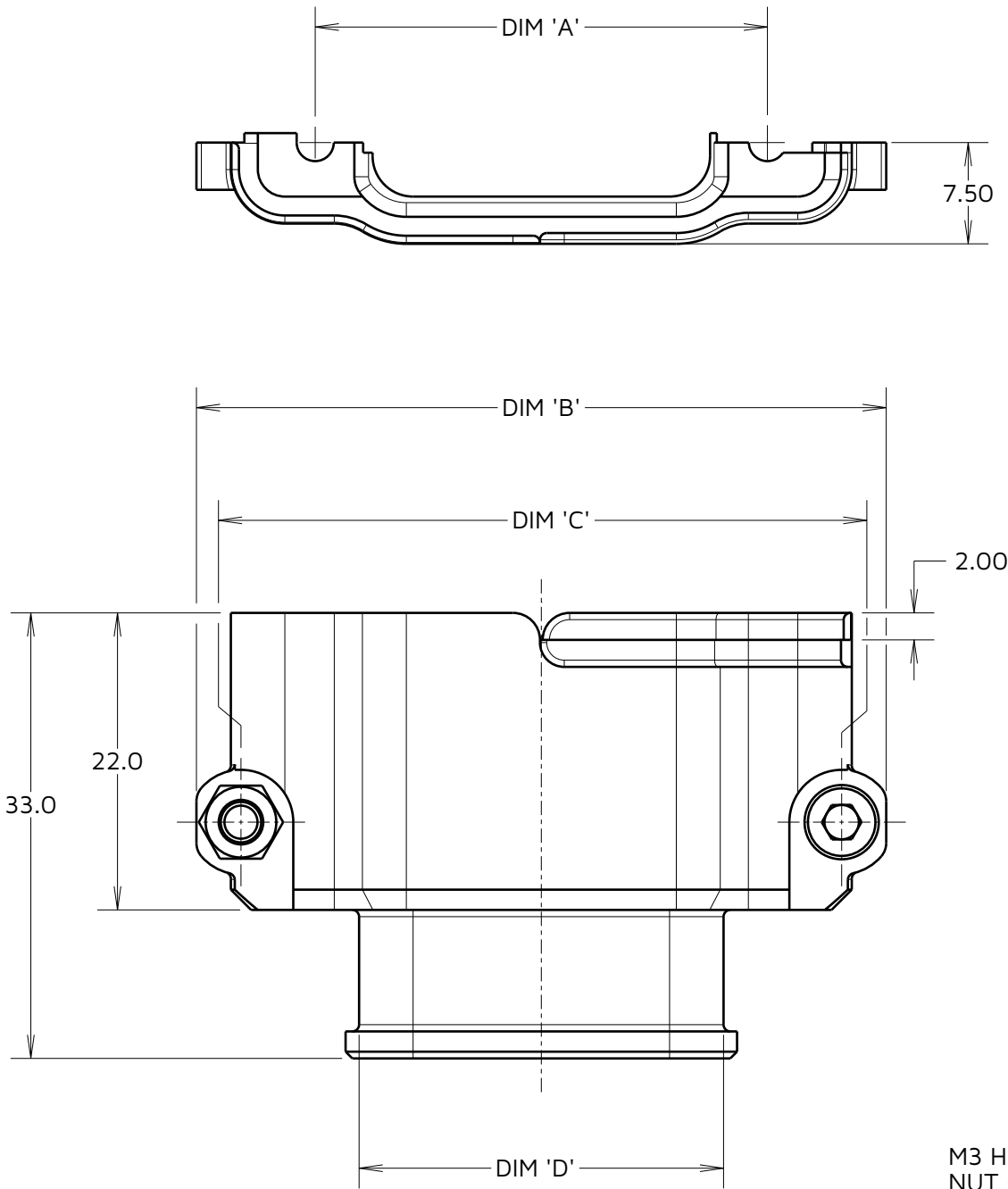
IF IN DOUBT - ASK

©

NOT TO SCALE

THIRD ANGLE PROJECTION

ALL DIMENSIONS IN mm



ASSEMBLY SHOWN FOR ILLUSTRATION PURPOSES ONLY. SUPPLIED AS KIT, NOT ASSEMBLED.

M3 HEXAGONAL RETAINING NUT (2-OFF)
SEE NOTE 3

PRODUCT CODE:
KA1-970XX00

TOTAL No. CONTACTS: _____
02, 03, 04

NOTES:

- SUPPLIED AS KIT OF PARTS TO BE ASSEMBLED TO KA1-301XX98M5 & KA1-201XX98F1.
- FOR BAND-IT TIE, ORDER M80-9480000 SEPERATELY. SEE INDIVIDUAL DRAWING FOR DETAILS.
- FOR SPARES, ORDER SEPERATELY PART NUMBERS:
KA1-4200000 - M3 HOOD RETAINING SCREW
KA1-4300000 - M3 HEXAGONAL RETAINING NUT
SEE INDIVIDUAL DRAWINGS FOR DETAILS.

MR	1	30.03.23	32395
NAME	ISS.	DATE	CN/CO
APPROVED: M.RUDKIN			
CHECKED: M.PLESTED			
DRAWN: F.CHRISPINE			
ASSEMBLY DRG:			

TABLE 1: DIMENSIONS				
PART No.	DIM 'A'	DIM 'B'	DIM 'C'	DIM 'D'
KA1-9700200	25.00	42.60	36.00	18.50
KA1-9700300	33.50	51.10	44.50	27.00
KA1-9700400	42.00	59.60	53.00	35.50

HARWIN

www.harwin.com

TOLERANCES
X. = $\pm 1\text{mm}$
X.X = $\pm 0.50\text{mm}$
X.XX = $\pm 0.20\text{mm}$
X.XXX = $\pm 0.01\text{mm}$
ANGLES = $\pm 5^\circ$
UNLESS STATED

THIS DRAWING AND ANY INFORMATION OR DESCRIPTIVE MATTER SET OUT HEREON ARE CONFIDENTIAL AND COPYRIGHT PROPERTY OF THE HARWIN GROUP AND MUST NOT BE DISCLOSED, LOANED, COPIED OR USED FOR MANUFACTURING, TENDERING OR FOR ANY OTHER PURPOSE WITHOUT THEIR WRITTEN PERMISSION.

MATERIAL:

SEE COMPONENT SPECIFICATION C052XX (LATEST ISSUE)

TITLE:

KONA CABLE BACKSHELL KIT

DRAWING NUMBER:

KA1-970XX00

SHT
2
OF
2

Mouser Electronics

Authorized Distributor

Click to View Pricing, Inventory, Delivery & Lifecycle Information:

Harwin:

[KA1-9700300](#) [KA1-9700200](#) [KA1-9700400](#)