

# Customer Information Sheet

DRAWING No.: S01-806005KIT

SHEET 2 OF 2

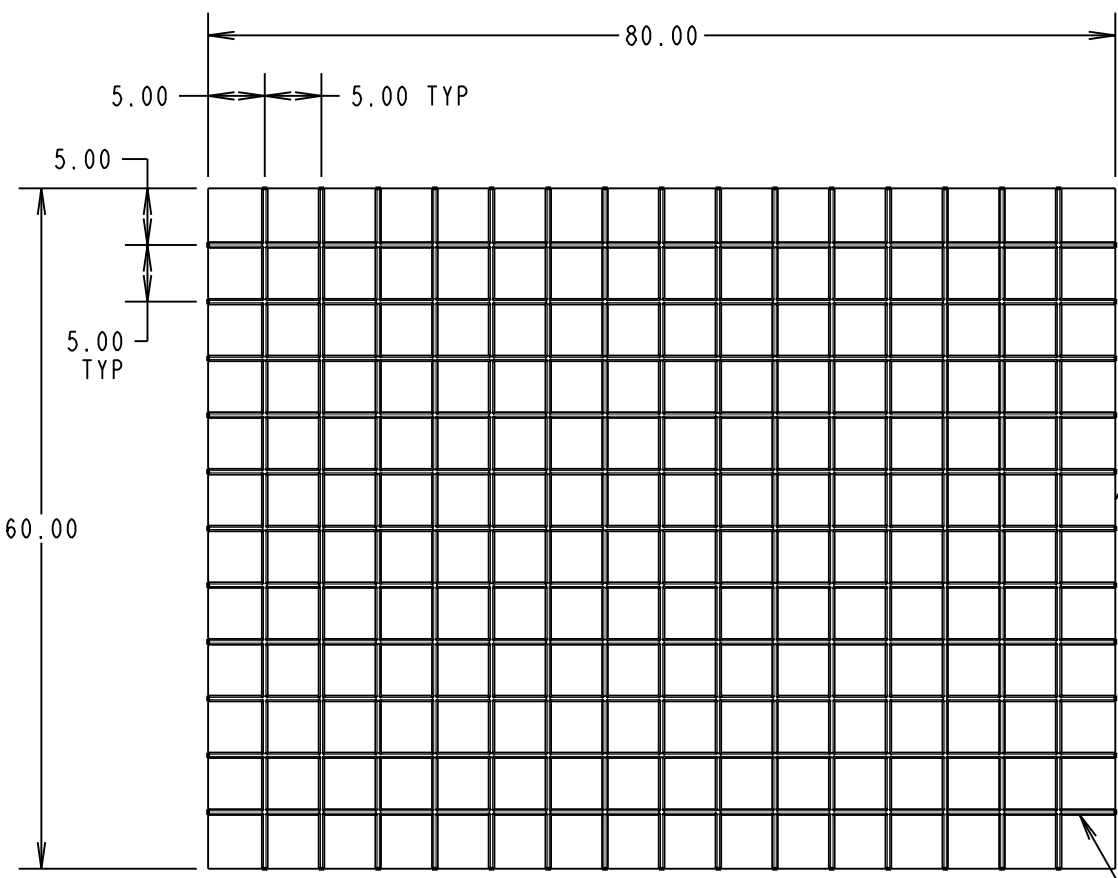
IF IN DOUBT - ASK

©

NOT TO SCALE

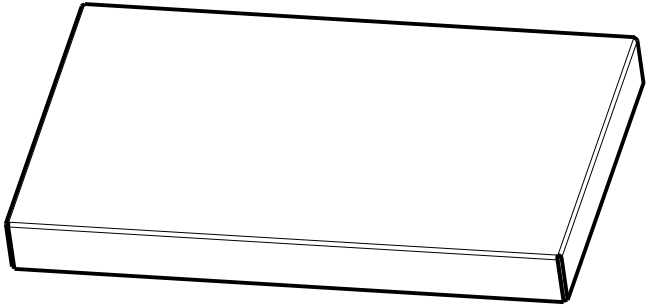
THIRD ANGLE PROJECTION

ALL DIMENSIONS IN mm

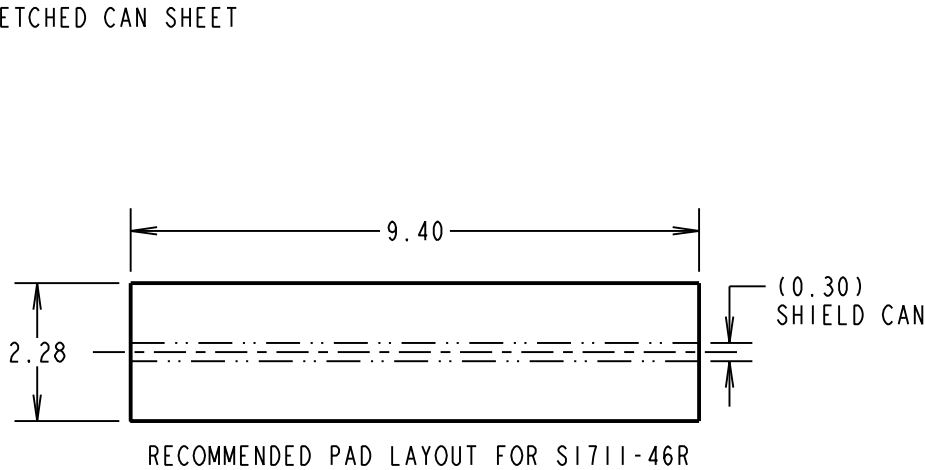
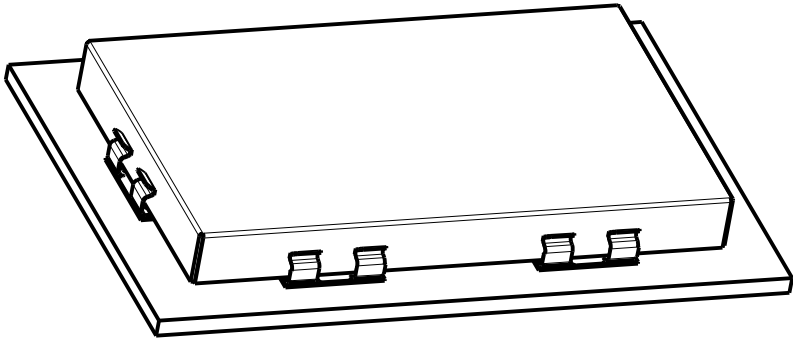


ORDER CODE:  
**S01-806005KIT**

CAN SHEET LENGTH:  
CAN SHEET WIDTH:  
CAN ETCHING PITCH:

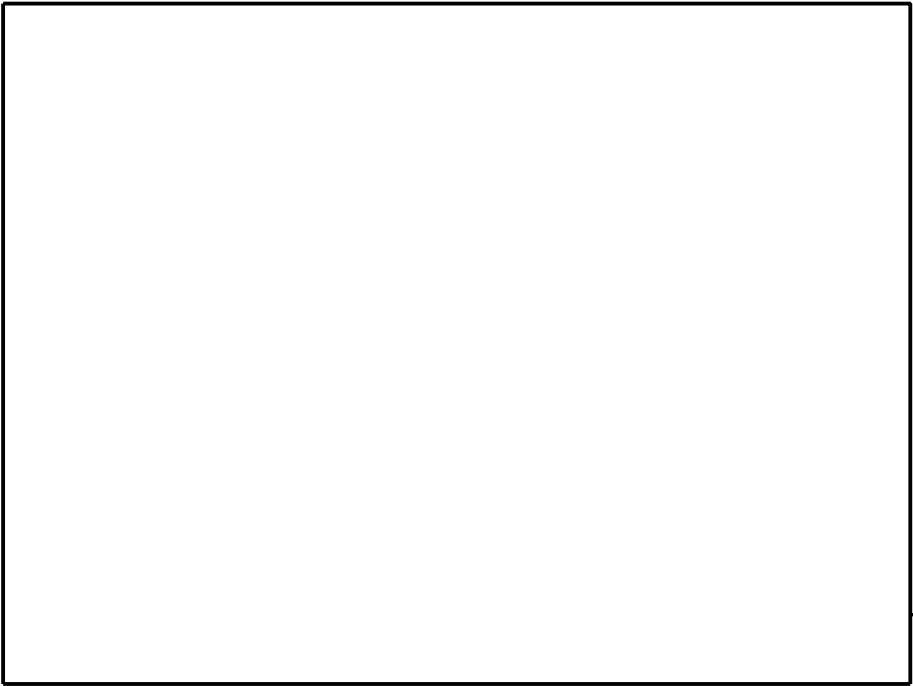
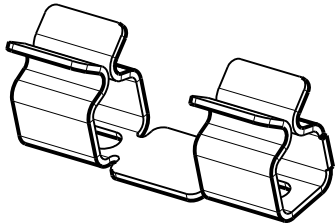
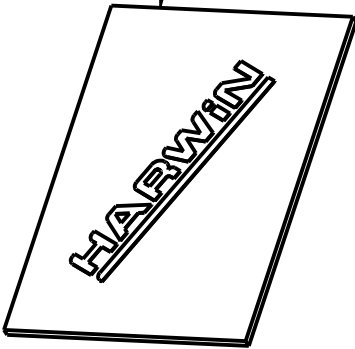


VIEW OF FOLDED CAN  
FOR ILLUSTRATION ONLY

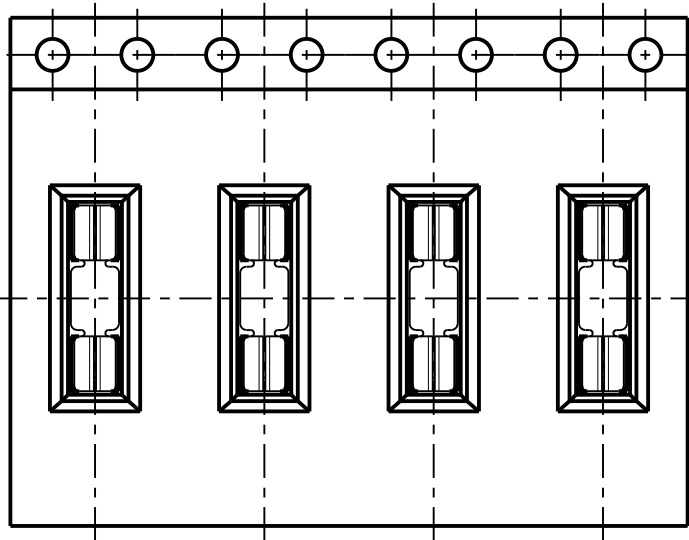


1/2 ETCHED LINES  
FOR FOLDING

SHIELD CAN KIT  
INSTRUCTION SHEET



NICKEL SILVER, HALF  
HARD NS106, TO BS1653  
0.30mm THICK  
(UNPLATED)



RFI SHIELD CLIPS

- NOTES:
- S01-806005KIT IS COMPOSED OF:
    - 1 x Y0905-00: CLEAR HARWIN BOX,
    - 2 x S01-806005SHEET: ETCHED NICKEL SILVER CAN SHEETS,
    - 24 x SI711-46R: RFI SHIELD CLIPS IN STRIPS OF 12,
    - 1 x IS-39: SHIELD CAN KIT INSTRUCTION SHEET.
  - FOR COMPONENT DETAILS OF RFI SHIELD CLIP, SEE DRAWING SI711-46R.

**HARWIN**

www.harwin.com  
technical@harwin.com

THIS DRAWING AND ANY  
INFORMATION OR DESCRIPTIVE  
MATTER SET OUT HEREON ARE  
CONFIDENTIAL AND COPYRIGHT  
PROPERTY OF THE HARWIN  
GROUP AND MUST NOT BE  
DISCLOSED, LOANED, COPIED  
OR USED FOR MANUFACTURING,  
TENDERING OR FOR ANY  
OTHER PURPOSE WITHOUT  
THEIR WRITTEN PERMISSION.

TOLERANCES  
X. =  $\pm 1\text{mm}$   
X.X =  $\pm 0.50\text{mm}$   
X.XX =  $\pm 0.10\text{mm}$   
X.XXX =  $\pm 0.01\text{mm}$   
ANGLES =  $\pm 5^\circ$   
UNLESS STATED

MATERIAL:

SEE ABOVE

FINISH: SEE ABOVE

S/AREA:

mm<sup>2</sup>

TITLE:

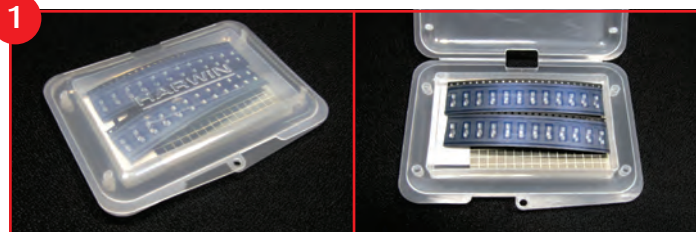
EZ-BOARDWARE SHIELD CAN  
AND SMT RFI SHIELD CLIP KIT

DRAWING NUMBER:

**S01-806005KIT**

SHT  
2 OF 2

SB	3	19.08.14	12554
NAME	ISS.	DATE	C/NOTE
APPROVED:		S.BENNETT	
CHECKED:		M.PLESTED	
DRAWN:		S.BENNETT	
CUSTOMER REF.:			
ASSEMBLY DRG:			



#### Your Kit contains:

- 2 x Shield Can Sheets
- 24 x RFI Shield Clips
- 1 x Instruction Sheet

#### Tools required:

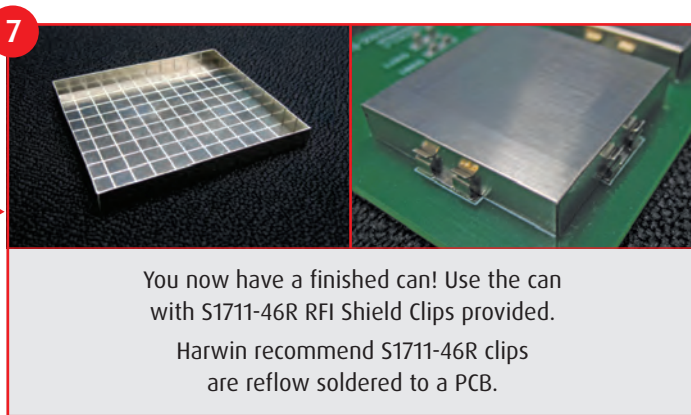
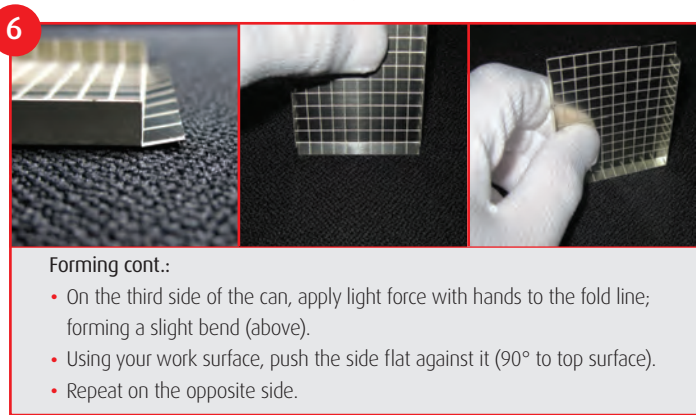
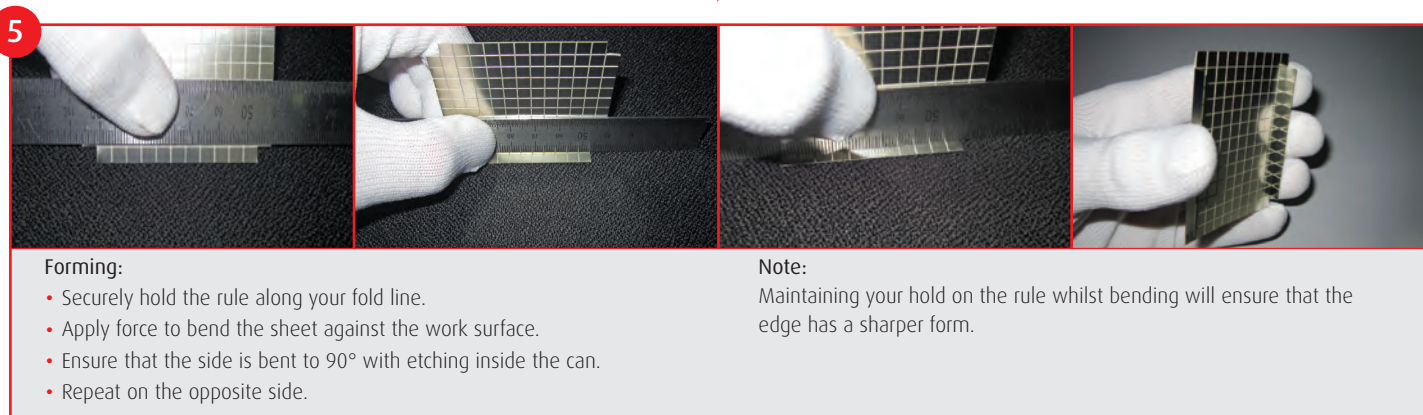
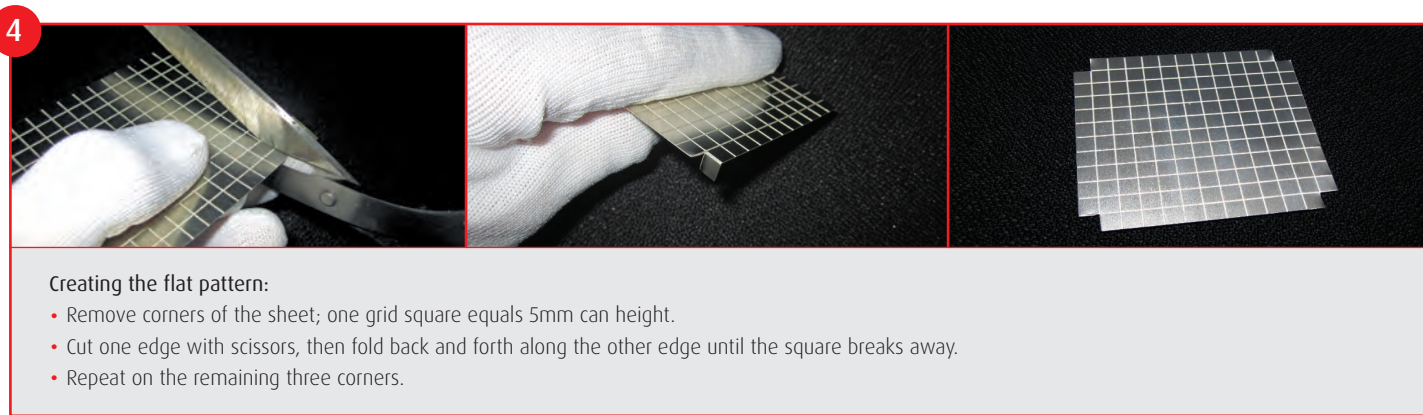
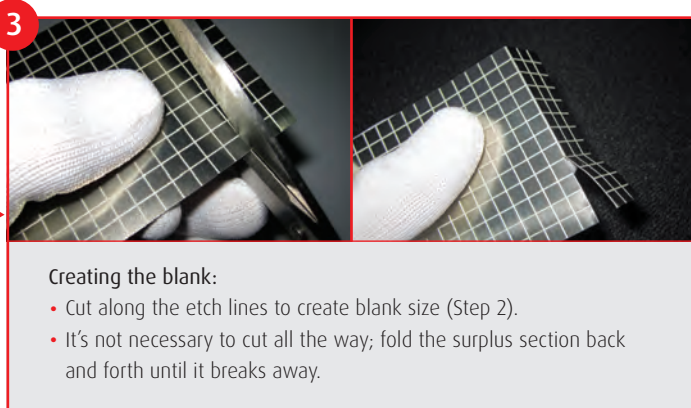
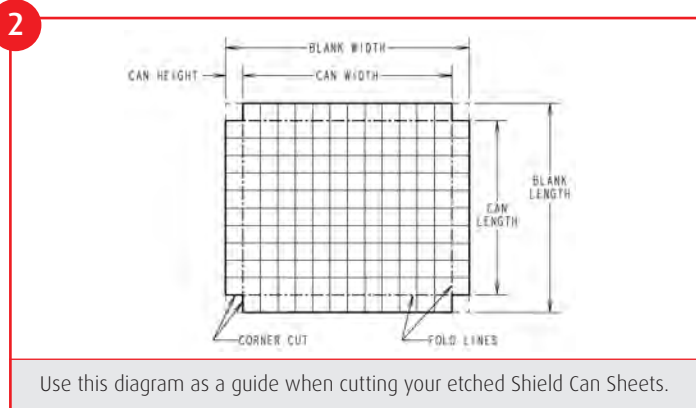
- A pair of scissors
- A rule
- A solid, flat work surface

## Shield Can Kit Instruction Sheet

S01-806005KIT

# HARWIN

IS-39 Issue: 2 Date: 23/03/2015



# Mouser Electronics

Authorized Distributor

Click to View Pricing, Inventory, Delivery & Lifecycle Information:

Harwin:

S01-806005KIT