

# Customer Information Sheet

DRAWING No.: H2176-XX

SHEET 2 OF 2

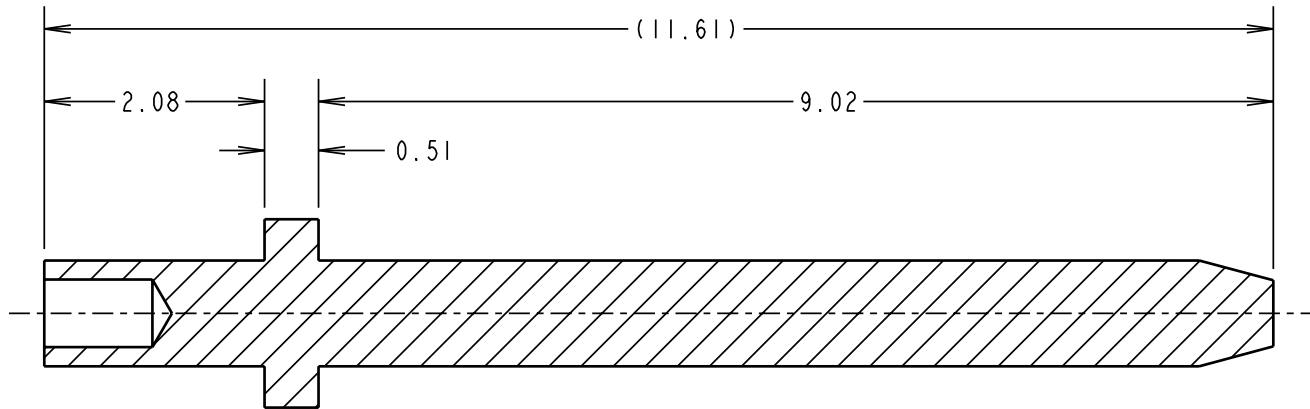
IF IN DOUBT - ASK

©

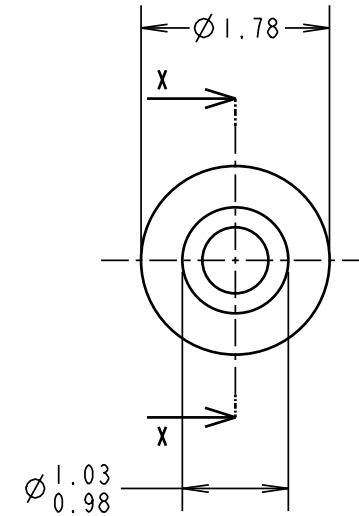
NOT TO SCALE

THIRD ANGLE PROJECTION

ALL DIMENSIONS IN mm



SECTION X-X



## NOTES:

1. RECOMMENDED MOUNTING HOLE SIZE =  $\varnothing 1.04-1.14\text{mm}$ .
2. RECOMMENDED PANEL THICKNESS = 1.6mm.
3. ALL TOLERANCES ARE  $\pm 0.13$  UNLESS OTHERWISE STATED.
4. PUNCH & DIE TOOL PART No. = Z2176-00.

ORDER CODE:

H2176-XX

FINISH: \_\_\_\_\_  
01 = TIN  
05 = GOLD

JAE 6 24.04.03 7380

NAME ISS. DATE C/NOTE

APPROVED: P. COLLINS

CHECKED: W. J. BOURNE

DRAWN: J. PHILIPSON

CUSTOMER REF.:

ASSEMBLY DRG:

**HARWIN**

HARWIN INC U.S.A.	HARWIN PLC U.K.	HARWIN PTE SINGAPORE
TEL: (812) 542 2546	TEL: 023 9237 0451	TEL: 65 6779 4909
FAX: (812) 542 2541	FAX: 023 9231 4590	FAX: 65 6779 3868

THIS DRAWING AND ANY INFORMATION OR DESCRIPTIVE MATTER SET OUT HEREON ARE CONFIDENTIAL AND COPYRIGHT PROPERTY OF THE HARWIN GROUP AND MUST NOT BE DISCLOSED, LOANED, COPIED OR USED FOR MANUFACTURING, TENDERING OR FOR ANY OTHER PURPOSE WITHOUT THEIR WRITTEN PERMISSION.

## TOLERANCES

~~X. =  $\pm 1\text{mm}$~~   
~~X.X =  $\pm 0.25\text{mm}$~~   
~~X.XX =  $\pm 0.10\text{mm}$~~   
~~X.XXX =  $\pm 0.01\text{mm}$~~   
ANGLES =  $\pm 5^\circ$   
UNLESS STATED

## MATERIAL:

BRASS CW603N TO BS EN 12164  
(CuZn36Pb3)

FINISH: SEE ABOVE

S/AREA: mm<sup>2</sup>

## TITLE:

TERMINAL PIN

DRAWING NUMBER:

H2176-XX

SHT  
2  
OF  
2

# Mouser Electronics

Authorized Distributor

Click to View Pricing, Inventory, Delivery & Lifecycle Information:

Harwin:

[H2176-05](#) [H2176-01](#)