

# Customer Information Sheet

DRAWING No.: H2175-XX

SHEET 2 OF 2

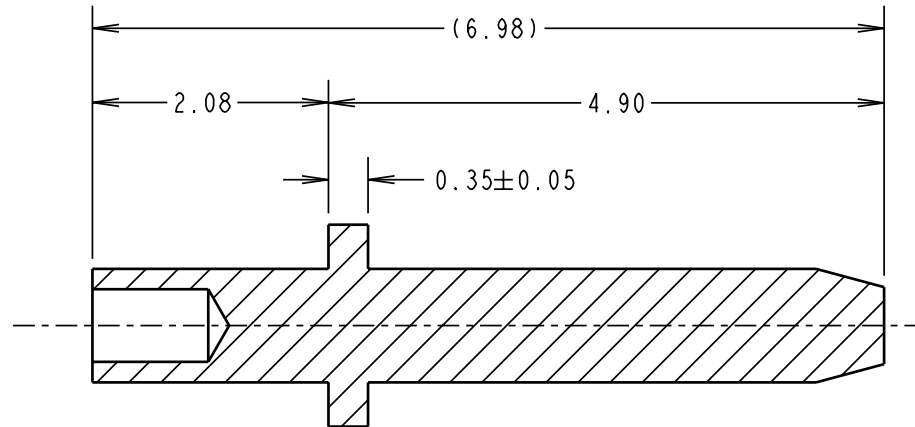
IF IN DOUBT - ASK

©

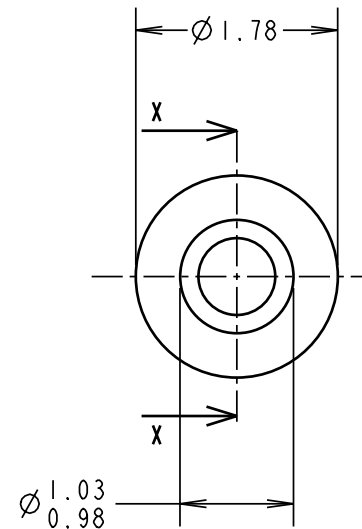
NOT TO SCALE

THIRD ANGLE PROJECTION

ALL DIMENSIONS IN mm



SECTION X-X



## NOTES:

1. RECOMMENDED MOUNTING HOLE SIZE =  $\varnothing 1.04-1.14$ mm.
2. RECOMMENDED PANEL THICKNESS = 1.6mm.
3. PUNCH & DIE PART No. = Z2175-00.

ORDER CODE:

H2175-XX

FINISH:

01 = TIN  
05 = GOLD

JAE	7	24.04.03	7380
-----	---	----------	------

NAME	ISS.	DATE	C/NOTE
------	------	------	--------

APPROVED: P. COLLINS

CHECKED: W. J. BOURNE

DRAWN: N. HOLDER

CUSTOMER REF.:

ASSEMBLY DRG:

**HARWIN**

THIS DRAWING AND ANY  
INFORMATION OR DESCRIPTIVE  
MATTER SET OUT HEREON ARE  
CONFIDENTIAL AND COPYRIGHT  
PROPERTY OF THE HARWIN  
GROUP AND MUST NOT BE  
DISCLOSED, LOANED, COPIED  
OR USED FOR MANUFACTURING,  
TENDERING OR FOR ANY  
OTHER PURPOSE WITHOUT  
THEIR WRITTEN PERMISSION.

## TOLERANCES

X. =  $\pm 1$ mm  
X.X =  $\pm 0.25$ mm  
X.XX =  $\pm 0.10$ mm  
X.XXX =  $\pm 0.01$ mm

ANGLES =  $\pm 5^\circ$ 

UNLESS STATED

## MATERIAL:

BRASS CW603N TO BS EN 12164  
(CuZn36Pb3)

FINISH: SEE ABOVE

S/AREA: mm<sup>2</sup>

## TITLE:

TERMINAL PIN

DRAWING NUMBER:

H2175-XX

SHT  
2  
OF 2

HARWIN INC  
U.S.A.

TEL: (812) 542 2546  
FAX: (812) 542 2541

HARWIN PLC  
U.K.

TEL: 023 9237 0451  
FAX: 023 9231 4590

HARWIN PTE  
SINGAPORE

TEL: 65 6779 4909  
FAX: 65 6779 3868

# Mouser Electronics

Authorized Distributor

Click to View Pricing, Inventory, Delivery & Lifecycle Information:

Harwin:

[H2175-01](#) [H2175-05](#)