

Customer Information Sheet

DRAWING No.: DEV-001

SHEET 2 OF 2

IF IN DOUBT - ASK

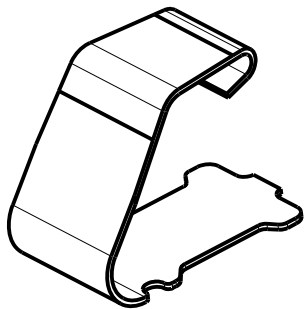
Ⓒ

NOT TO SCALE

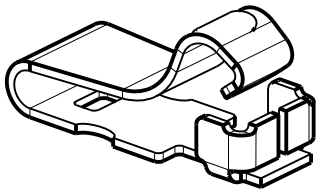
THIRD ANGLE PROJECTION

ALL DIMENSIONS IN mm

BOX DIMENSIONS = 338mm x 261mm x 57mm

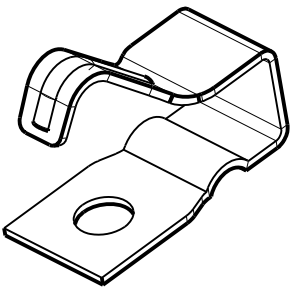


S1761-4XR

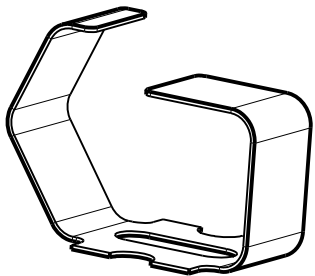


S7221-45R

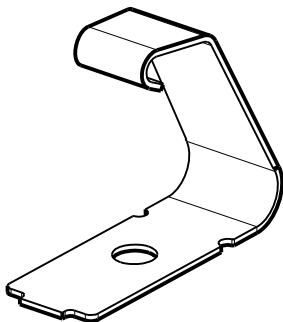
DEV-001 SPRING CONTACTS			
COMPONENT	PART No.	DESCRIPTION	QUANTITY PER KIT
1	S1741-46R	2.50mm SPRING CONTACT IN TAPE AND REEL	20
2	S1761-42R	3.50mm SPRING CONTACT IN TAPE AND REEL	
3	S1761-46R	3.50mm SPRING CONTACT IN TAPE AND REEL	
4	S1791-42R	4.00mm SPRING CONTACT IN TAPE AND REEL	
5	S1941-46R	7.25mm SPRING CONTACT IN TAPE AND REEL	
6	S7051-42R	6.00mm SPRING CONTACT IN TAPE AND REEL	
7	S7061-42R	5.57mm SPRING CONTACT IN TAPE AND REEL	
8	S7061-46R	5.57mm SPRING CONTACT IN TAPE AND REEL	
9	S7071-46R	2.50mm SPRING CONTACT IN TAPE AND REEL	
10	S7081-42R	2.75mm SPRING CONTACT IN TAPE AND REEL	
11	S7101-42R	3.50mm SPRING CONTACT IN TAPE AND REEL	
12	S7121-42R	1.70mm SPRING CONTACT IN TAPE AND REEL	
13	S7131-45R	2.00mm SPRING CONTACT IN TAPE AND REEL	
14	S7161-45R	3.50mm SPRING CONTACT IN TAPE AND REEL	
15	S7221-45R	1.23mm SPRING CONTACT IN TAPE AND REEL	
16	S7271-45R	2.00mm SPRING CONTACT IN TAPE AND REEL	



S7161-45R



S1941-46R



S7061-4XR

- NOTES:
- SEE TABLE FOR DEV-001 DEVELOPMENT KIT CONTENT.
 - FOR REFILLS OF PRODUCT, PLEASE SEND AN EMAIL TO: devkit@harwin.co.uk. INCLUDE YOUR NAME, COMPANY & THE PRODUCT/PART NUMBER(S) REQUIRED.
 - KIT CONTAINS PRODUCT INFORMATION GUIDE.
 - SEE INDIVIDUAL PRODUCT DRAWINGS FOR DIMENSIONS AND SPECIFICATIONS.

MSP	2	16.01.17	20380
NAME	ISS.	DATE	C/NOTE
APPROVED:		M.PERREN	
CHECKED:		S.BENNETT	
DRAWN:		S.BENNETT	
CUSTOMER REF.:			
ASSEMBLY DRG:			

HARWIN

www.harwin.com
technical@harwin.com

THIS DRAWING AND ANY INFORMATION OR DESCRIPTIVE MATTER SET OUT HEREON ARE CONFIDENTIAL AND COPYRIGHT PROPERTY OF THE HARWIN GROUP AND MUST NOT BE DISCLOSED, LOANED, COPIED OR USED FOR MANUFACTURING, TENDERING OR FOR ANY OTHER PURPOSE WITHOUT THEIR WRITTEN PERMISSION.

TOLERANCES
X. = $\pm 1\text{mm}$
X.X = $\pm 0.25\text{mm}$
X.XX = $\pm 0.10\text{mm}$
X.XXX = $\pm 0.01\text{mm}$
ANGLES = $\pm 5^\circ$
UNLESS STATED

MATERIAL:

SEE ABOVE

FINISH:

SEE ABOVE

S/AREA:

mm²

TITLE:

SPRING CONTACT
DEVELOPMENT KIT

DRAWING NUMBER:

DEV-001

SHT
2
OF
2

Mouser Electronics

Authorized Distributor

Click to View Pricing, Inventory, Delivery & Lifecycle Information:

Harwin:

DEV-001