

Features

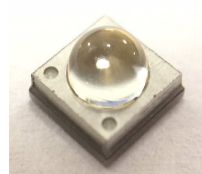
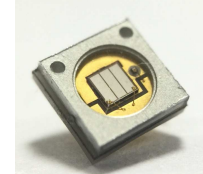
- 3939 UVA LED
- Optional Optical Quartz Lens
- ROHS and REACH Compliant
- MSL 4 qualified according to J-STD 020
- ESD 8KV

Description

The IN-C39(X)TO UVA series is a high-power(5W) UVA LED with Good Thermal Dissipation and High Efficiency. It is a SMD type LED which can be used in various applications.

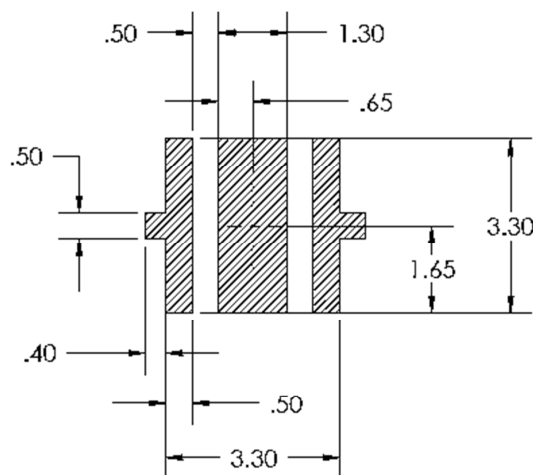
Applications

- UV Curing
- Medical applications
- Counterfeit Detection
- Purification

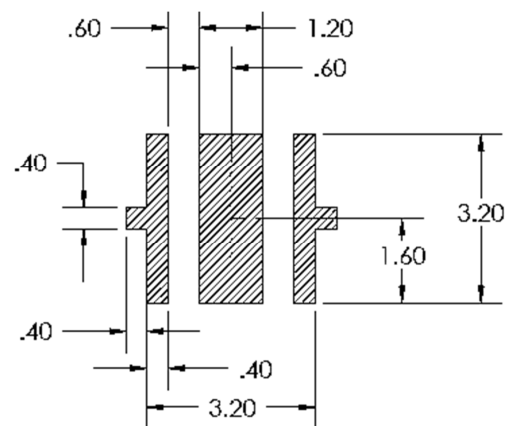
		
IN-C39ATO 30D	IN-C39BTO 60D	IN-C39CTO 120D
3.9*3.9*3.12mm	3.9*3.9*2.56mm	3.9*3.9*1.53mm

Recommended Solder Pattern

(Suggest Stencil t=0.12 mm)



RECOMMENDED PCB SOLDER PAD



RECOMMENDED STENCIL PATTERN
(HATCHED AREA IS OPENING)

Figure 1. IN-C39ATO / IN-C39BTO / IN-C39CTO Recommended Solder Pattern

Note:

- * All dimensions are in millimeters.
- * Tolerance is $\pm 0.13\text{mm}$ unless other specified.

Package Dimensions

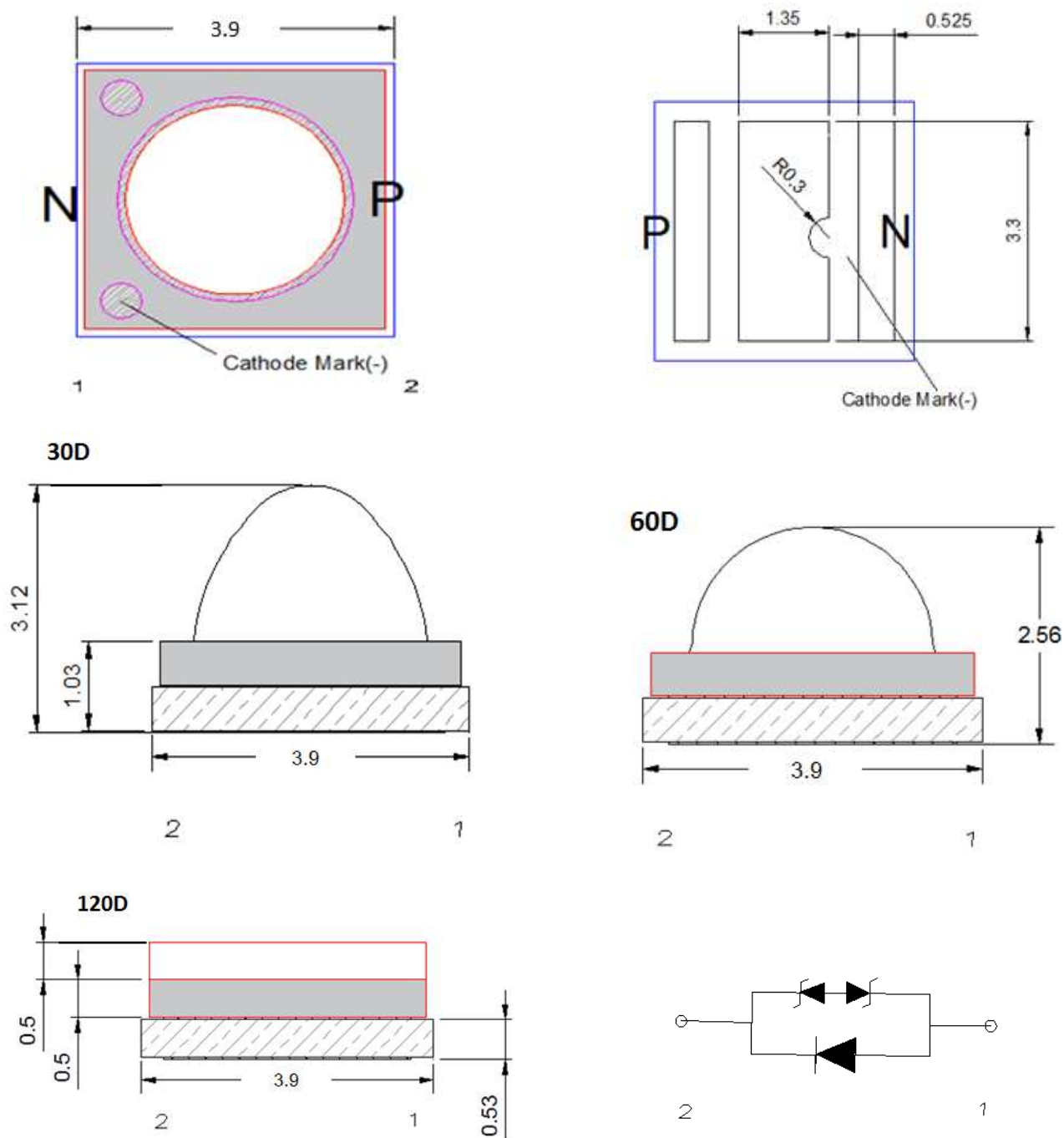


Figure 2. IN-C39ATO / IN-C39BTO / IN-C39CTO Package Dimension

Note:

All dimensions are in millimeters.

Tolerance is $\pm 0.13\text{mm}$ unless other specified.

Absolute Maximum Rating at 25°C

Characteristics	Symbol	Min.	Typical	Max.	Unit
DC Forward Current ¹	I_F	---	1000	1200	mA
Pulse Current (@1/10 duty) ²	I_P	---	---	1800	mA
Forward Voltage	V_F	3.0	---	4.4	V
Reverse Voltage	V_R	---	---	-5	V
Power Dissipation	PD	---	---	6.6	W
Leakage Current (5V)	I_R	---	---	10	μ A
Junction Temperature ³	T_j	---	85	---	°C
Operating Temperature Range	T_{opr}	-40	-	80	°C
Storage Temperature Range	T_{stg}	-40	---	80	°C
Soldering Temperature	T_{sol}	---	---	260	°C
Thermal Resistance Junction / Solder Point	R_{th}	---	4.5	---	°C/W
Viewing Angle ⁴	$2\theta_{1/2}$	---	30/60/120	---	Deg

Notes:

- When operating at other than ambient temperature, maximum allowable current depends on derating curves.
- Pulse width = 0.01s & duty factor = 1/10.
- When operating at maximum allowable current, T_j must be below 85 °C.
- Viewing angle tolerance is $\pm 10^\circ$.

Electrical Characteristics $T_A = 25^\circ\text{C}$ (Note 1)

Product	$V_F(V)@1000\text{mA}$			Viewing Angle	$I_R(\mu\text{A})@V_R=5\text{V}$
	min	typ	max	$2\theta_{1/2}$	max
IN-C39ATO UV Series IN-C39BTO UV Series IN-C39CTO UV Series	3.0	---	4.4	30/60/120	10

Notes:

- Performance guaranteed only under conditions listed in above tables.

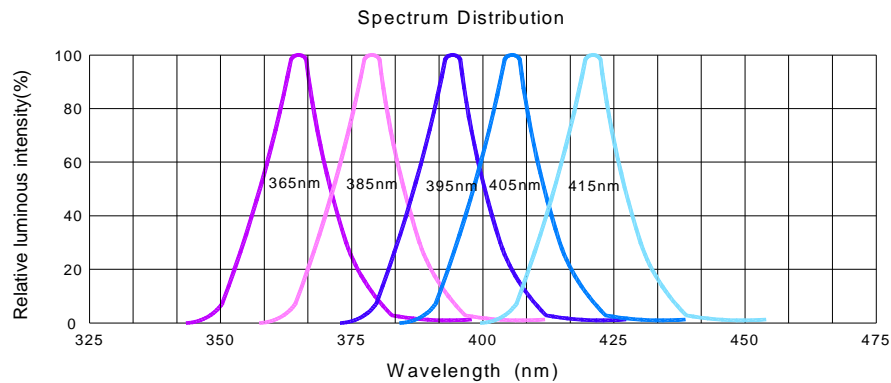
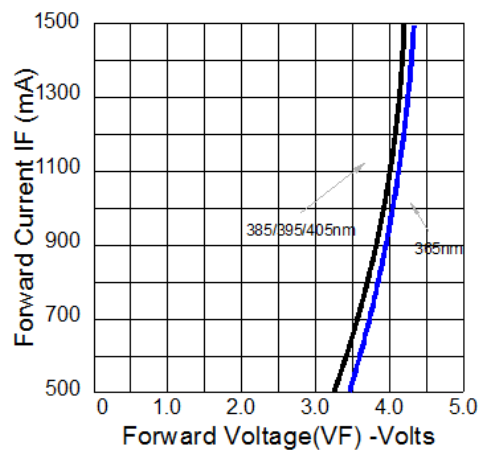
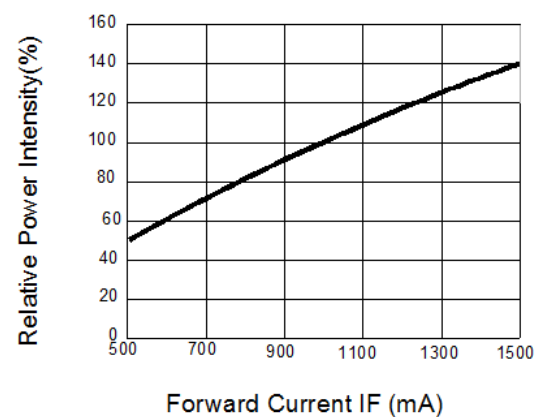
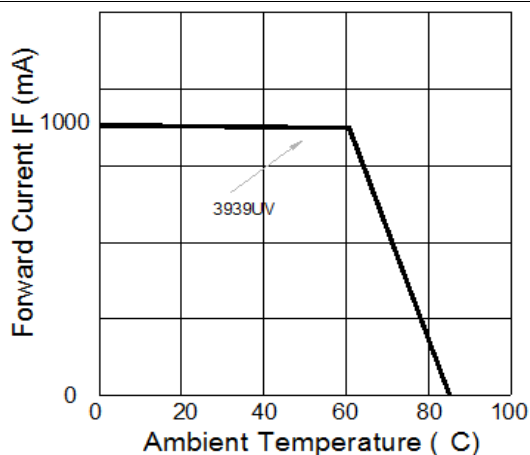
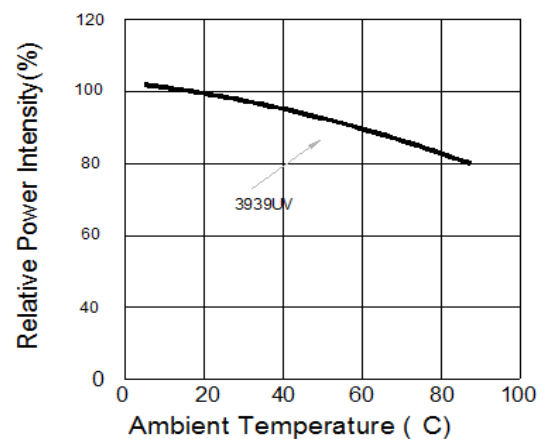
ESD Precaution

ATTENTION: Electrostatic Discharge (ESD) protection

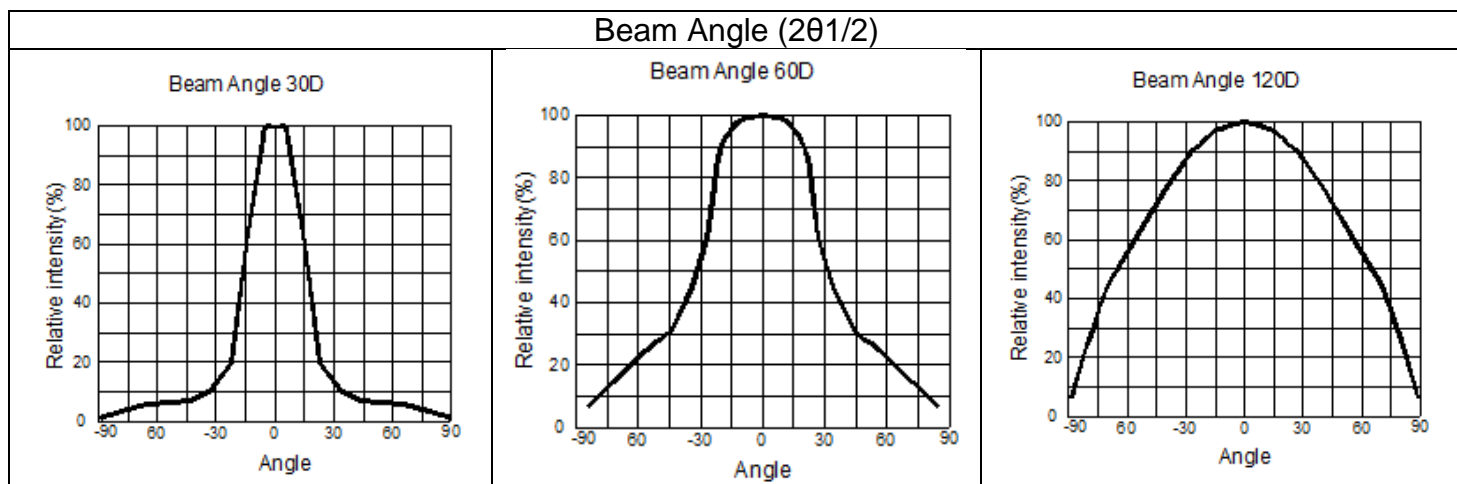


The symbol above denotes that ESD precaution is needed. ESD protection for GaP and AlGaAs based chips is necessary even though they are relatively safe in the presence of low static-electric discharge. Parts built with AlInGaP, GaN, or/and InGaN based chips are STATIC SENSITIVE devices. ESD precaution must be taken during design and assembly. If manual work or processing is needed, please ensure the device is adequately protected from ESD during the process.

Please be advised that normal static precautions should be taken in the handling and assembly of this device to prevent damage or degradation which may be induced by electrostatic discharge (ESD).

Electronic-Optical Characteristics
Relative Spectral Power Distribution

Forward Current vs. Forward Voltage (Ta=25°C)

Relative Radiant Flux vs. Forward Current (Ta=25°C)

Forward Current vs. Ambient Temperature

Radiant Power vs. Ambient Temperature

Notes:

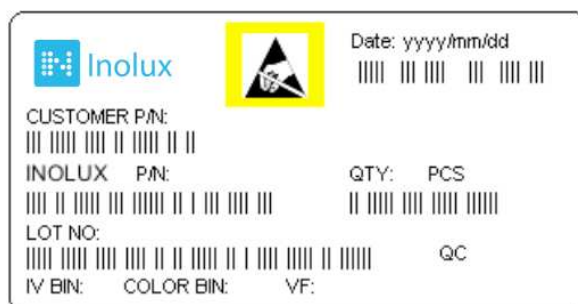
Viewing angle(2θ1/2) ± 10°



Ordering Information

Product	Emission Color	Viewing Angle	Orderable Part Number
IN-C39(X)TO	U2:365~370nm	30°	IN-C39ATOU2
		60°	IN-C39BTOU2
		120°	IN-C39CTOU2
	U4:380~390nm	30°	IN-C39ATOU4
		60°	IN-C39BTOU4
		120°	IN-C39CTOU4
	U5:390~400nm	30°	IN-C39ATOU5
		60°	IN-C39BTOU5
		120°	IN-C39CTOU5

Label Specifications



Inolux P/N:

I	N	-	C	3	9	X	T	O		X	-	X	X	X	X
Inolux SMD			Material	Package		Variation	Orientation	Current	Lens	Color		Customized Stamp-off			
			C = Ceramic Type	39A = 3.9 x 3.9 x 3.12, 30 Deg. 39B = 3.9 x 3.9 x 2.56, 60 Deg. 39C = 3.9 x 3.9 x 1.53, 120 Deg.			T = Top Mount	O = 1000mA	(Blank) = Clear	U5 = 390-400nm U4 = 380-390nm U2 = 365-370nm					

Lot No.:

Z	2	0	1	7	01	24	001
Internal Tracker	Year (2017, 2018,)				Month	Date	Serial

Peak Wavelength Binning

Peak Wavelength unit: nm@1000mA			
Bin Code		Min	Max
U2	R1	365	370
U4	SA	380	385
	SB	385	390
U5	TA	390	395
	TB	395	400

Notes:

1. Binning current is 1000mA
2. Wavelength tolerance $\pm 2\text{nm}$

Voltage Binning

Voltage unit: V@1000mA			
Peak Wavelength	Bin Code	Min	Max
U2: 365~370nm	V1	3.2	3.4
	V2	3.4	3.6
	V3	3.6	3.8
	V4	3.8	4.0
U4:380~390nm / U5:390~400nm	V0	3.0	3.2
	V1	3.2	3.4
	V2	3.4	3.6
	V3	3.6	3.8

Notes:

1. Binning current is 1000mA
2. Voltage tolerance $\pm 0.06\text{nm}$

Radiant flux (Power) binning

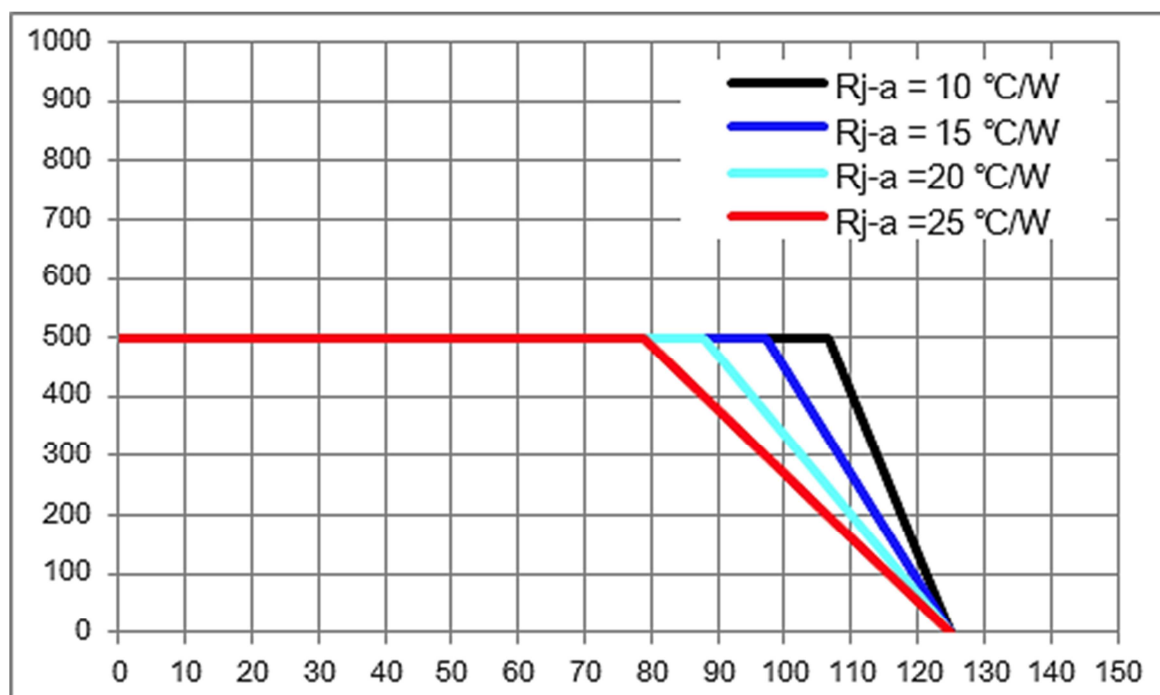
	Radiant flux (Power) unit: mw@1000mA		
Peak Wavelength	Bin Code	Min	Max
U2: 365~370nm	H1	1600	1750
	H2	1750	1900
	H3	1900	2050
U4: 380~390nm	H2	1750	1900
	H3	1900	2050
	H4	2050	2200
U5: 390~400nm	H2	1750	1900
	H3	1900	2050
	H4	2050	2200

Notes:

1. Binning current is 1000mA
2. Power tolerance $\pm 10\%$

Thermal Design

Thermal design of the end product is important. The thermal resistance between the junction and the solder point ($R_{\theta JS}$) and the end product should be designed to minimize the thermal resistance from the solder point to ambient in order to optimize the emitter life and optical characteristics. The maximum operation current is determined by the plot of Allowable Forward Current vs. Ambient Temperature.



The junction temperature can be correlated to the thermal resistance between the junction and ambient (R_{ja}) by the following equation.

$$T_j = T_a + R_{ja} \cdot W$$

T_j = LED junction temperature

T_a = Ambient temperature

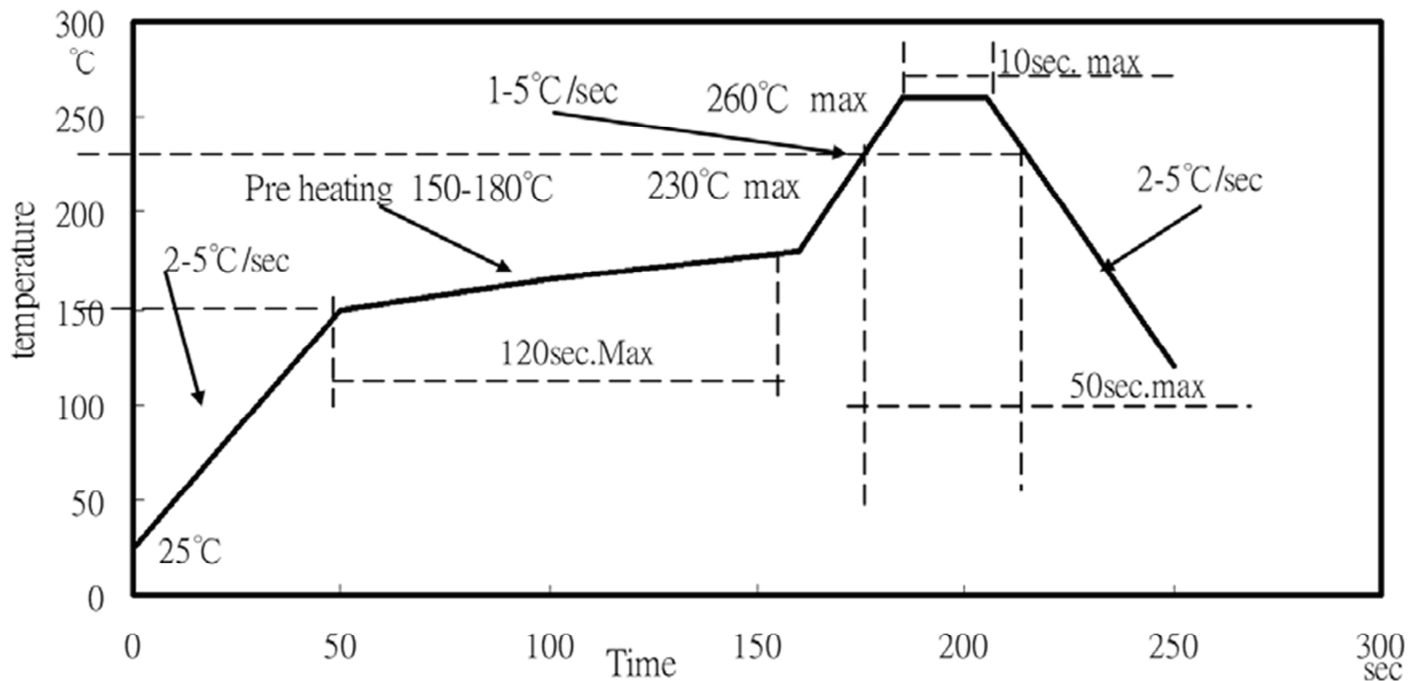
R_{ja} = Thermal resistance between the junction and ambient

W = Input power ($I_F \cdot V_F$)

Reflow Soldering

The LEDs can be soldered using the parameter listed below. As a general guideline, the users are suggested to follow the recommended soldering profile provided by the manufacturer of the solder paste. Although the recommended soldering conditions are specified in the list, reflow soldering at the lowest possible temperature is preferred for the LEDs.

Suggested lead-free soldering profile:

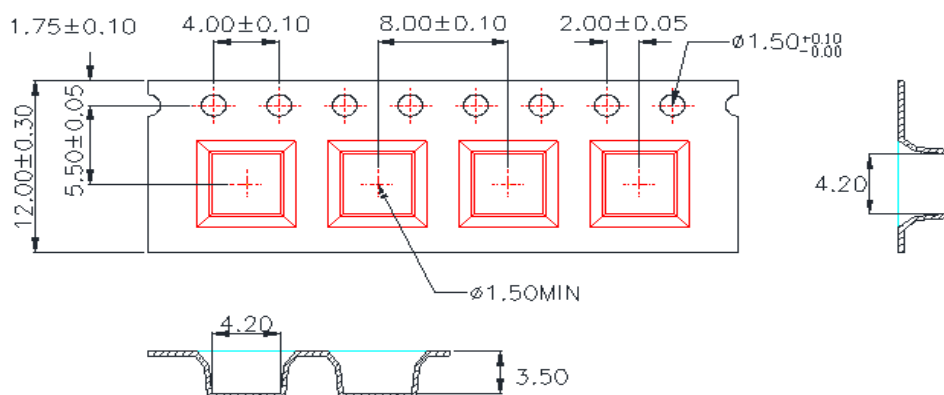


Notes:

1. The recommended reflow temperature is 240°C(±5°C). The maximum soldering temperature should be limited to 260°C.
2. Do not stress the silicone resin while it is exposed to high temperature.
3. The number of reflow process should not exceed 3 times.

Packing

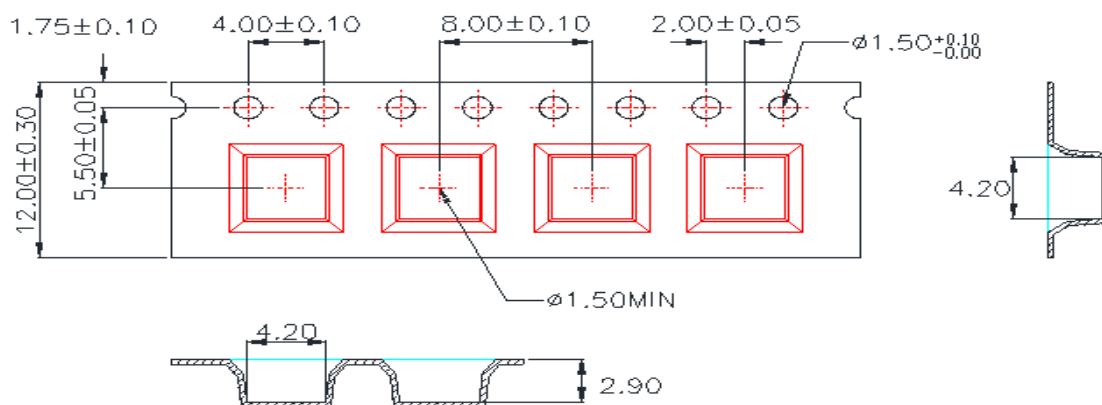
The carrier tape conforms to EIA-481D.



W	A0	B0	K0
12.00±0.30	4.20±0.10	4.20±0.10	3.50±0.10

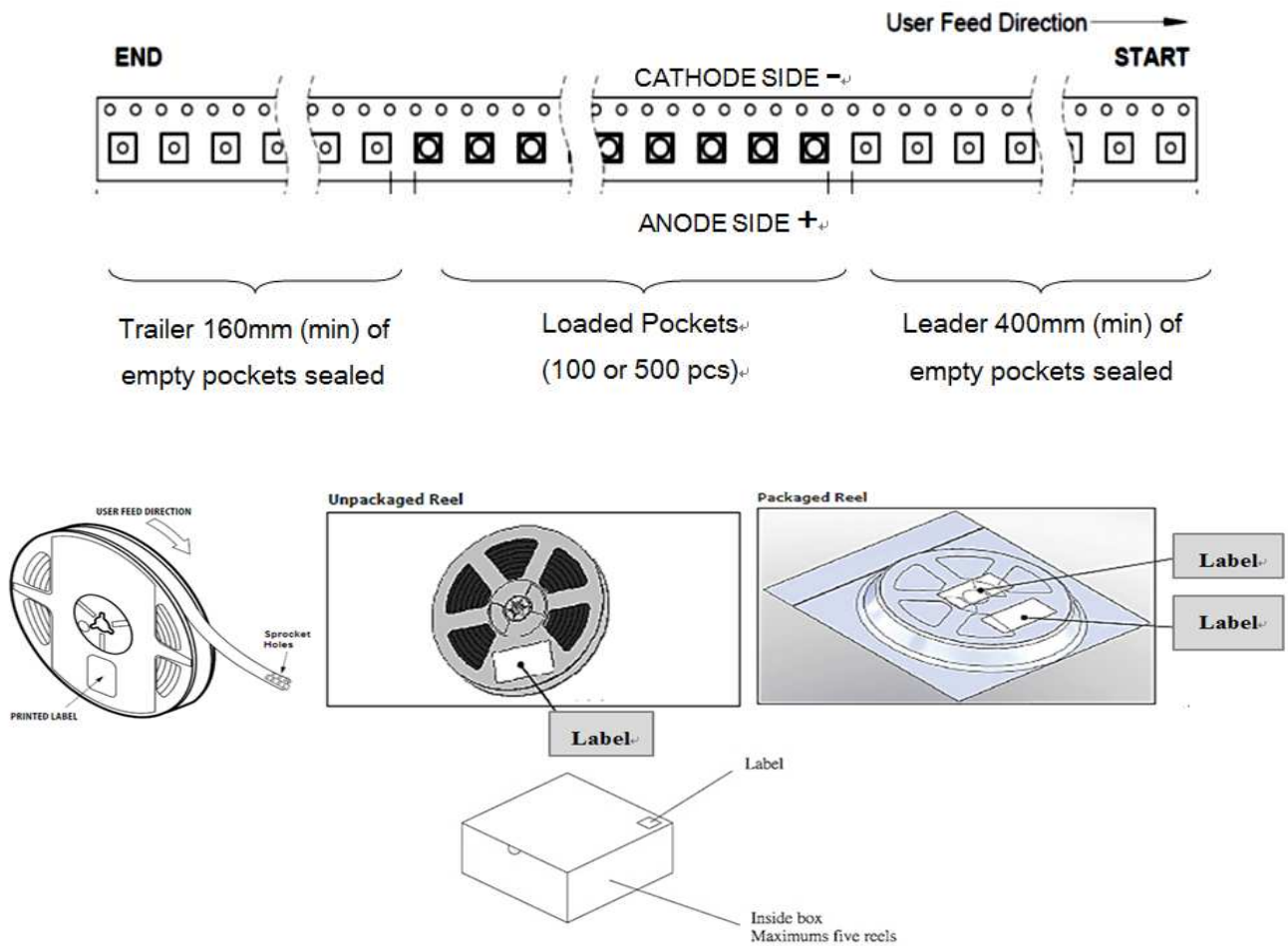
1. 10 sprocket hole pitch cumulative tolerance ± 0.20 .
2. Carrier camber is within 1 mm in 250 mm.
3. Material: Black Conductive Polystyrene Alloy.
4. All dimensions meet EIA-481-D requirements.
5. Thickness: 0.30 ± 0.05 mm.
6. Packing length per 22" reel: 62.5 Meters (1:3).
7. Component load per 13" reel: 2500 pcs.

3939 120° / 60°



W	A0	B0	K0
12.00±0.30	4.20±0.10	4.20±0.10	3.50±0.10

1. 10 sprocket hole pitch cumulative tolerance ± 0.20 .
2. Carrier camber is within 1 mm in 250 mm.
3. Material: Black Conductive Polystyrene Alloy.
4. All dimensions meet EIA-481-D requirements.
5. Thickness: 0.30 ± 0.05 mm.
6. Packing length per 22" reel: 62.5 Meters (1:3).
7. Component load per 13" reel: 2500 pcs.



Notes:

1. Each Reel (minimum number of pieces is 100 and maximum is 500(30D/60D/120D) packed in a moisture-proof bag along with 2 packs of desiccant and a humidity indicator card.
2. A maximum of 5 moisture-proof bags are packed in an inner box (size: 240mm x 200mm x 105mm \pm 5mm).
3. A maximum of 4 inner boxes are put in an outer box (size: 410mm x 255mm x 230mm \pm 5mm).
4. Part No., Lot No., quantity should be indicated on the label of the moisture-proof bag and the cardboard box.

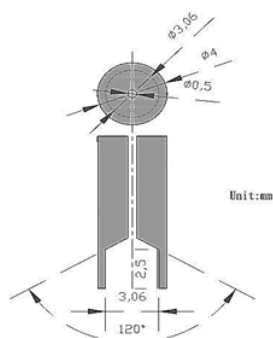
Precautions

1. Recommendation for using LEDs

- 1.1 The lens of LEDs should not be exposed to dust or debris. Excessive dust and debris may cause a drastic decrease in the luminosity.
- 1.2 Avoid mechanical stress on LED lens.
- 1.3 Do not touch the LED lens surface. It would affect the optical performance of the LED due to the LED lens' damage.
- 1.4 Pick & place tools are recommended for the remove of LEDs from the factory tape & reel packaging.

2. Pick & place nozzle

The pickup tool was recommended and shown as below:



3. Lens handling

Please follow the guideline to pick LEDs:

- 3.1 Use tweezers to pick LEDs.
- 3.2 Do not touch the lens by using tweezers.
- 3.3 Do not touch lens with fingers.
- 3.4 Do not apply more than 4N of force (400g) directly onto the lens.

4. Lens cleaning

In the case which a small amount of dirt and dust particles remain on the lens surface, a suitable cleaning solution can be applied.

- 4.1 Try gently wiping with a dust-free cloth.
- 4.2 If needed, use a dust-free cloth and isopropyl alcohol to gently remove the dirt from the lens surface.
- 4.3 Do not use other solvents as they may react with the LED assembly.
- 4.4 Do not use ultrasonic cleaning which will damage the LEDs.

Revision History

Changes since last revision	Page	Version No.	Revision Date
Initial Release		1.0	6-28-2018
Format Adjustment		1.1	10-25-2018

DISCLAIMER

INOLUX reserves the right to make changes without further notice to any products herein to improve reliability, function or design. INOLUX does not assume any liability arising out of the application or use of any product or circuit described herein; neither does it convey any license under its patent rights, nor the rights of others.

LIFE SUPPORT POLICY

INOLUX's products are not authorized for use as critical components in life support devices or systems without the express written approval of the President of INOLUX or INOLUX CORPORATION. As used herein:

1. Life support devices or systems are devices or systems which, (a) are intended for surgical implant into the body, or (b) support or sustain life, and (c) whose failure to perform when properly used in accordance with instructions for use provided in the labeling, can be reasonably expected to result in a significant injury of the user.
2. A critical component in any component of a life support device or system whose failure to perform can be reasonably expected to cause the failure of the life support device or system, or to affect its safety or effectiveness.

Mouser Electronics

Authorized Distributor

Click to View Pricing, Inventory, Delivery & Lifecycle Information:

Inolux:

[IN-C39CTOU4](#) [IN-C39BTOU2](#) [IN-C39BTOU5](#) [IN-C39ATOU4](#) [IN-C39ATOU5](#) [IN-C39CTOU5](#) [IN-C39BTOU4](#) [IN-C39ATOU2](#) [IN-C39CTOU2](#)