

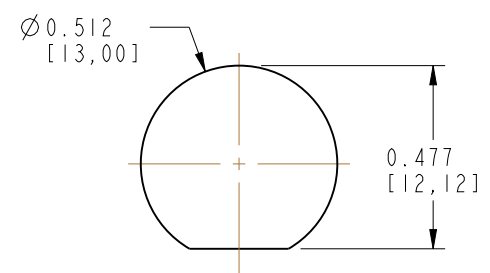
NOTES:

- MATERIALS AND FINISHES:
 BNC STR BHD JACK - BRASS, NICKLE PLATING
 SMA STR PLUG - BRASS, GOLD PLATING
 CABLE - RG 58
- ELECTRICAL:
 A. IMPEDANCE: 50 OHM
- PACKAGING:
 A. QUANTITY: SINGLE PACK
 B. MARKING: BAG TO BE MARKED
 "AMPHENOL RF, 95-850-246-XXX AND DATE CODE".

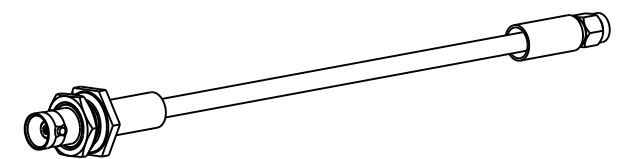
THIRD ANGLE PROJ.

REVISIONS

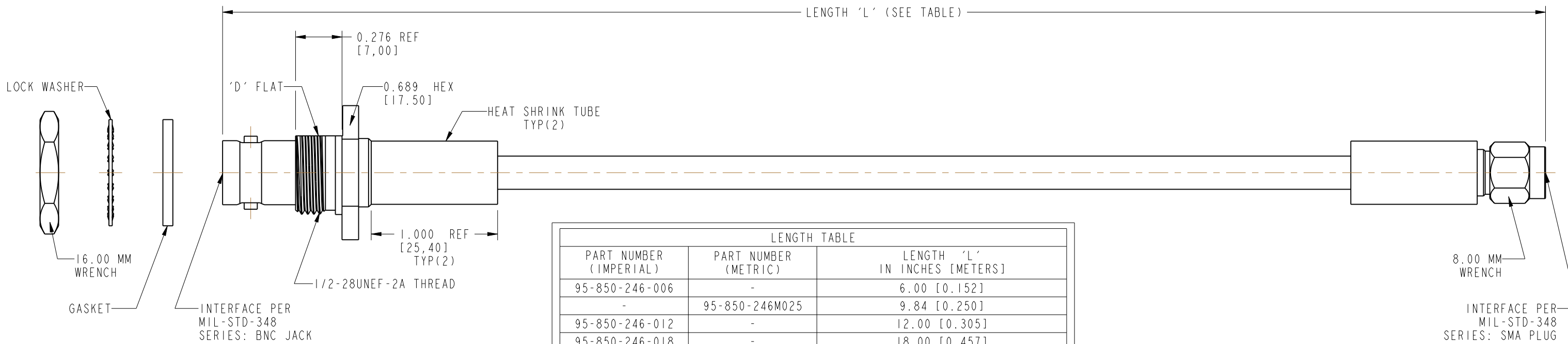
REV	DESCRIPTION	DATE	ECO	APPR
A	RELEASE TO MFG.	27-Jan-20	14301	SKP



RECOMMENDED MOUNTING HOLE DIMENSIONS



SCALE 0.500



LENGTH TABLE		
PART NUMBER (IMPERIAL)	PART NUMBER (METRIC)	LENGTH 'L' IN INCHES [METERS]
95-850-246-006	-	6.00 [0.152]
-	95-850-246M025	9.84 [0.250]
95-850-246-012	-	12.00 [0.305]
95-850-246-018	-	18.00 [0.457]
-	95-850-246M050	19.69 [0.500]
95-850-246-024	-	24.00 [0.610]
-	95-850-246M075	29.53 [0.750]
95-850-246-036	-	36.00 [0.914]
-	95-850-246M100	39.37 [1.000]
95-850-246-048	-	48.00 [1.219]
-	95-850-246M150	59.06 [1.500]
95-850-246-060	-	60.00 [1.524]
-	95-850-246M200	78.74 [2.000]
95-850-246-084	-	84.00 [2.134]
95-850-246-096	-	96.00 [2.438]
-	95-850-246M300	118.11 [3.000]
95-850-246-120	-	120.00 [3.048]
95-850-246-144	-	144.00 [3.658]
-	95-850-246M400	157.48 [4.000]

TOLERANCE TABLE	
LENGTH IN INCHES/FT [METERS]	TOLERANCE
0" - 23.90" [0 - 0.607]	±0.25" [0.006]
24.00" - 59.00" [0.610 - 1.499]	±0.50" [0.013]
5.0' - 24.9' [1.524 - 7.617]	±2.5%
25.0' & UP [7.620 & UP]	±5.0%

DESIGN REQUIREMENTS:

<input checked="" type="checkbox"/> FREQUENCY: DC - 3 GHz	<input checked="" type="checkbox"/> CONTINUITY
<input type="checkbox"/> VSWR: _____ MAX.	<input checked="" type="checkbox"/> HI-POT: 750 VRMS
<input type="checkbox"/> INS. LOSS: _____ dB MAX.	<input type="checkbox"/> OTHER

CUSTOMER OUTLINE DRAWING
 ALL OTHER SHEETS ARE FOR INTERNAL USE ONLY

UNLESS OTHERWISE SPECIFIED, DIMENSIONS ARE IN INCHES AND TOLERANCES ARE: 2 PLACE DECIMAL 3 PLACE DECIMAL ANGLES ±.015 (0.381 mm) ±.005 (0.127 mm) ± 1°	MATERIAL	DRAWN	DATE	TITLE BNC STR BHD JACK TO SMA STR PLUG USING RG 58 CABLE VARIOUS LENGTH SCALE: 1.7:1.0 SHEET 2 OF 2		Amphenol RF www.amphenolrf.com	
	SEE NOTES	KRISHNA S	11-Dec-19				
NOTICE - These drawings, specifications, or other data (1) are, and remain the property of Amphenol corp. (2) must be returned upon request; and (3) are confidential and not to be disclosed to any person other than those to whom they are given by Amphenol Corp. the furnishing of these drawings, specifications, or other data by Amphenol Corp., or to any other person to anyone for any purpose is not to be regarded by implication or otherwise in any manner licensing, granting rights to permitting such holder or any other person to manufacture, use or sell any product, process or design, patented or otherwise, that may in any way be related to or disclosed by said drawings, specifications, or other data.	REFERENCE	ENGINEER	DATE	DRAWING NO. 95-850-246-XXX ITEM NO. 95-850-246-XXX		PART NO. 95-850-246-XXX	
	EAR # 9575	KRISHNA S	11-Dec-19				
	CONFIGURATION LEVEL: In Work	APPROVED	DATE		DWG SIZE B REV A		
FINISH	O.BARTHELMES	27-Jan-20					

Mouser Electronics

Authorized Distributor

Click to View Pricing, Inventory, Delivery & Lifecycle Information:

Amphenol:

[095-850-246-006](#) [095-850-246-012](#) [095-850-246-018](#) [095-850-246-024](#) [095-850-246-036](#) [095-850-246M300](#) [095-850-246M400](#) [095-850-246M025](#) [095-850-246M050](#) [095-850-246M075](#) [095-850-246M100](#) [095-850-246M150](#) [095-850-246M200](#) [095-850-246-048](#) [095-850-246-060](#) [095-850-246-084](#) [095-850-246-096](#) [095-850-246-120](#) [095-850-246-144](#)