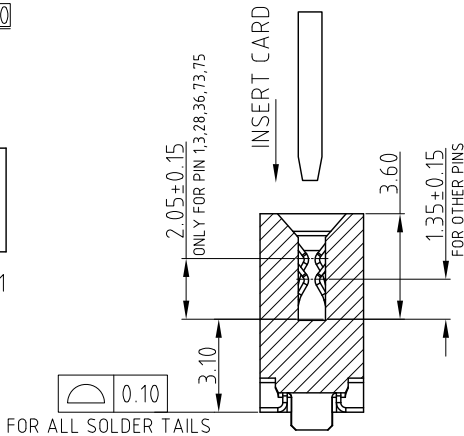
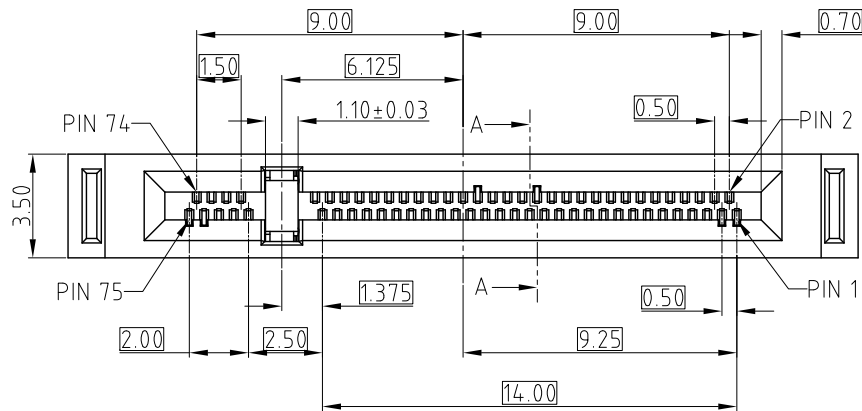
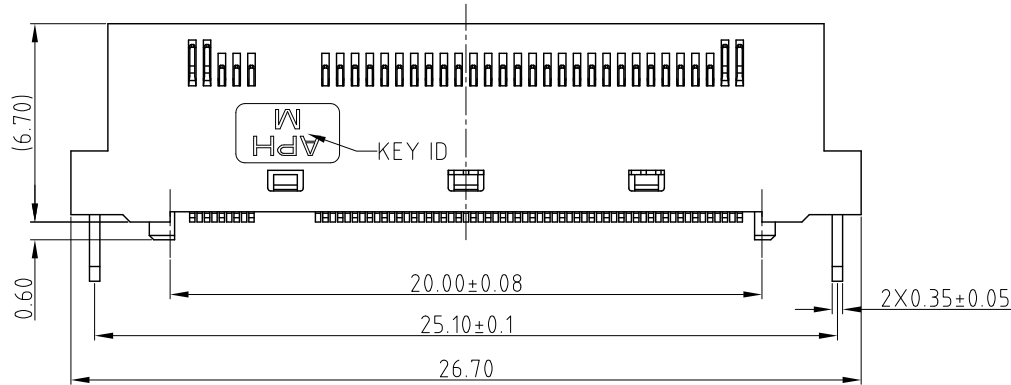


This document is the property of Amphenol Corporation and is delivered on the express condition that it is not to be disclosed, reproduced or used, in whole or in part, for manufacture or sale by anyone other than Amphenol Corporation without its prior consent, & that no right is granted to disclose or to use any information in this document.

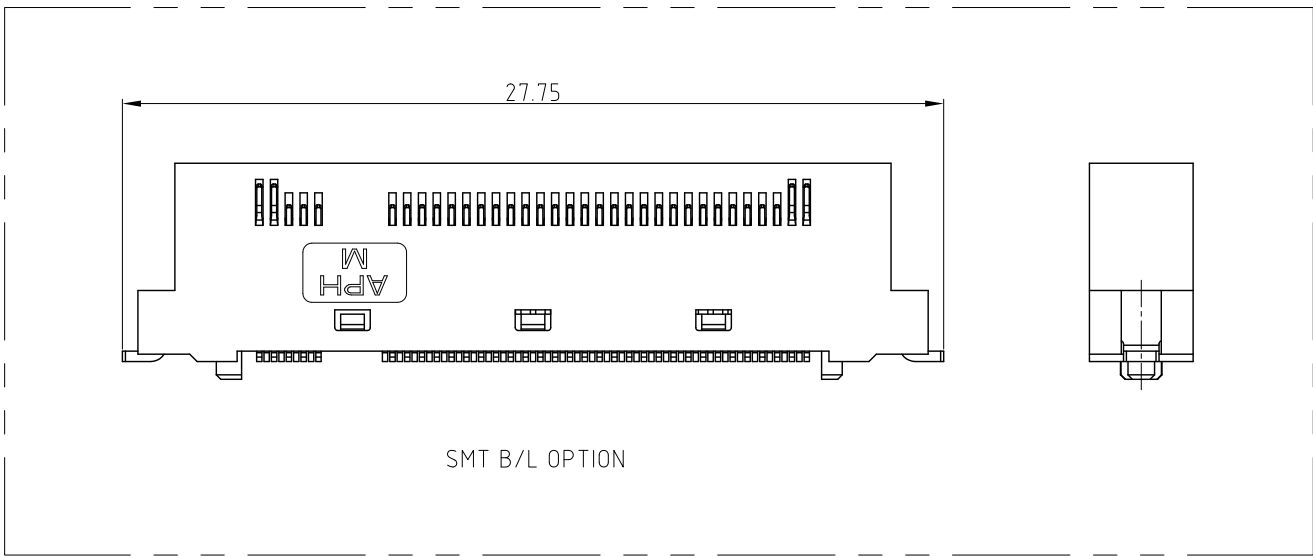
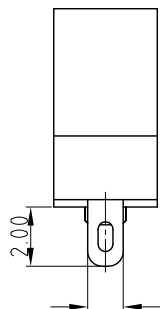
CUSTOMER DRAWING



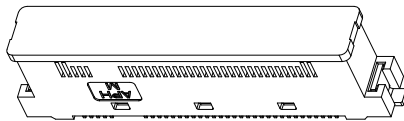
SECTION A-A



T/H B/L OPTION



SMT B/L OPTION



WITH CAP

NOTE:

- MATERIAL:
PLASTIC: LCP, UL 94V-0, BLACK
CONTACT: COPPER ALLOY
KEY METAL: STAINLESS STEEL
BOARD LOCK: ALLOY
- FINISHED:
CONTACT AREA: 30u" MIN Au PLATED
SOLDER AREA: GOLD FLASH
BOARD LOCK: TIN PLATING 2.54um MIN
UNDERPLATED: NI PLATING 1.27um MIN
- ELECTRICAL PERFORMANCE:
3.1 CURRENT RATING: 0.5A PER PIN
3.2 DIELECTRIC STRENGTH: 300V AC FOR 1 MINUTE
3.3 INSULATION RESISTANCE: 500MΩ MIN
3.4 CONTACT RESISTANCE: 55mΩ MAX
3.5 OPERATION TEMPERATURE: -40°C TO +80°C
- DIMENSIONING SHALL BE INTERPRETED PER ASME Y14.5M 1994
- MATERIAL SHOULD BE FULFILLED AMPHENOL SPEC# S-SN-002 FOR HALOGEN FREE PRODUCTS, ALSO NEED TO MEET # S-SN-004

ORDER P/N SYSTEM:

MD3670MX100011X

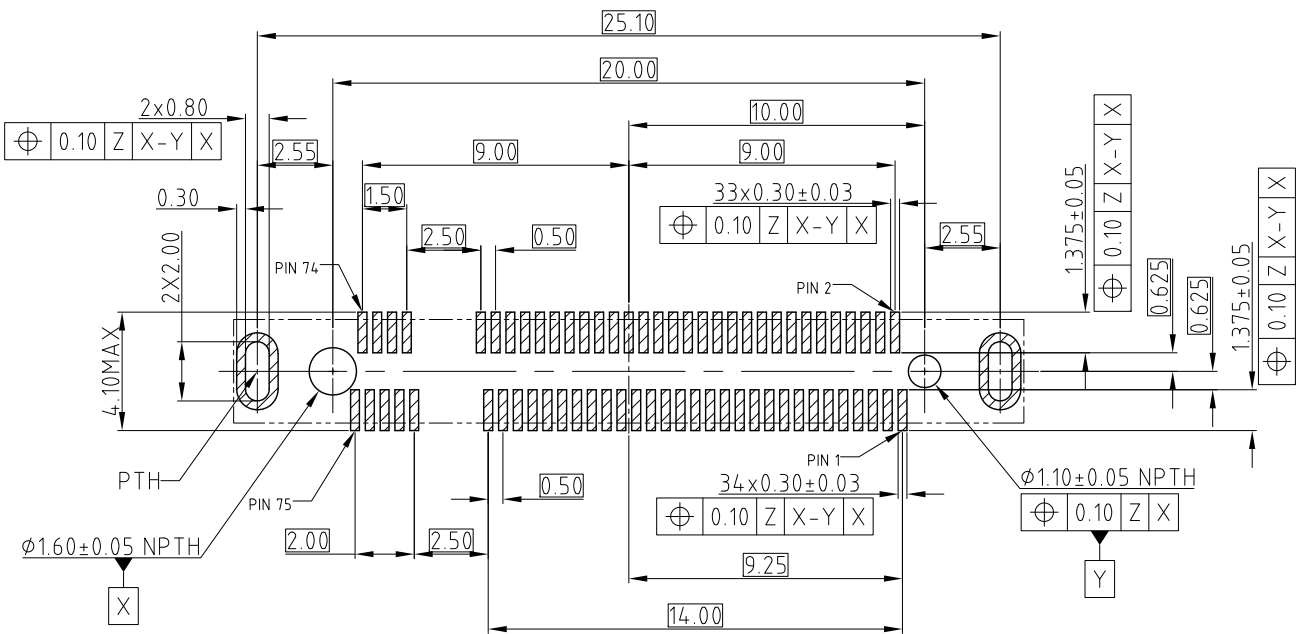
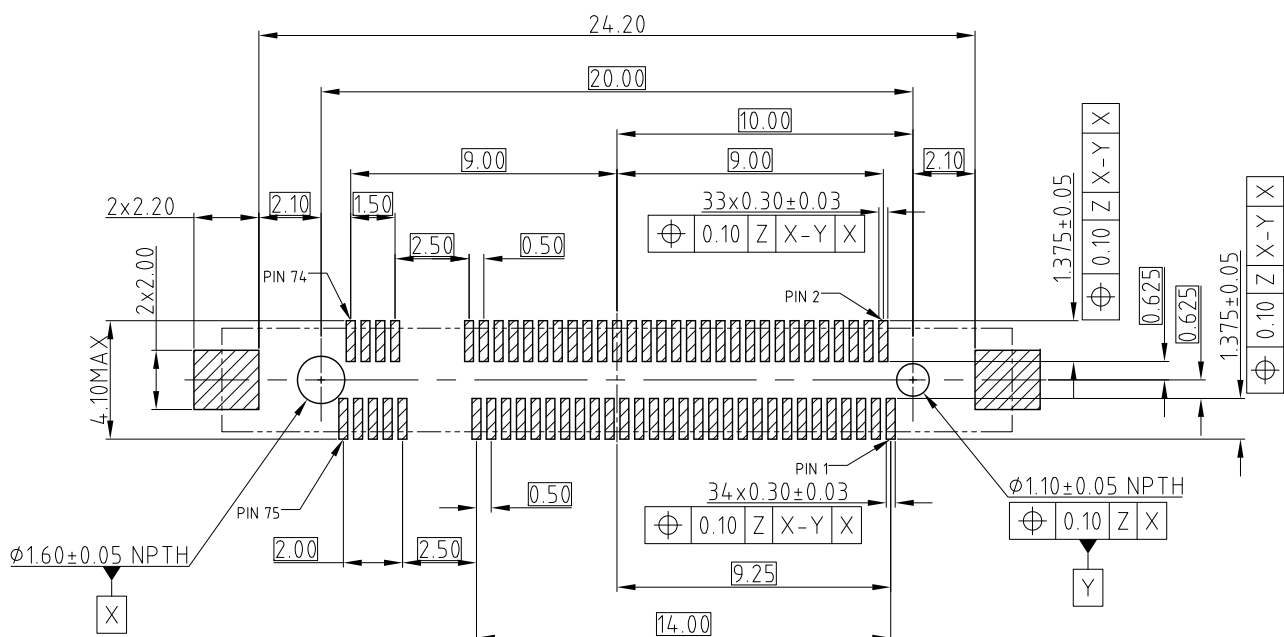
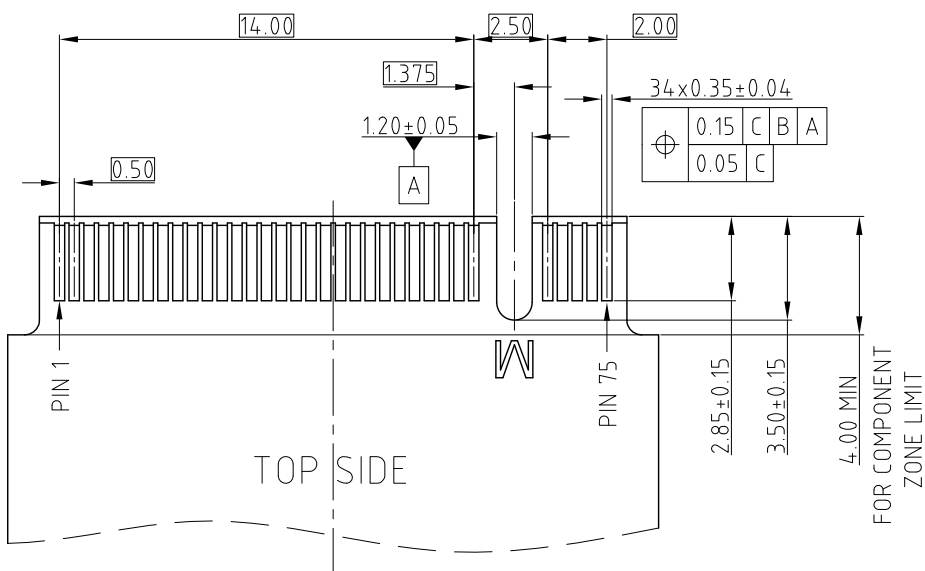
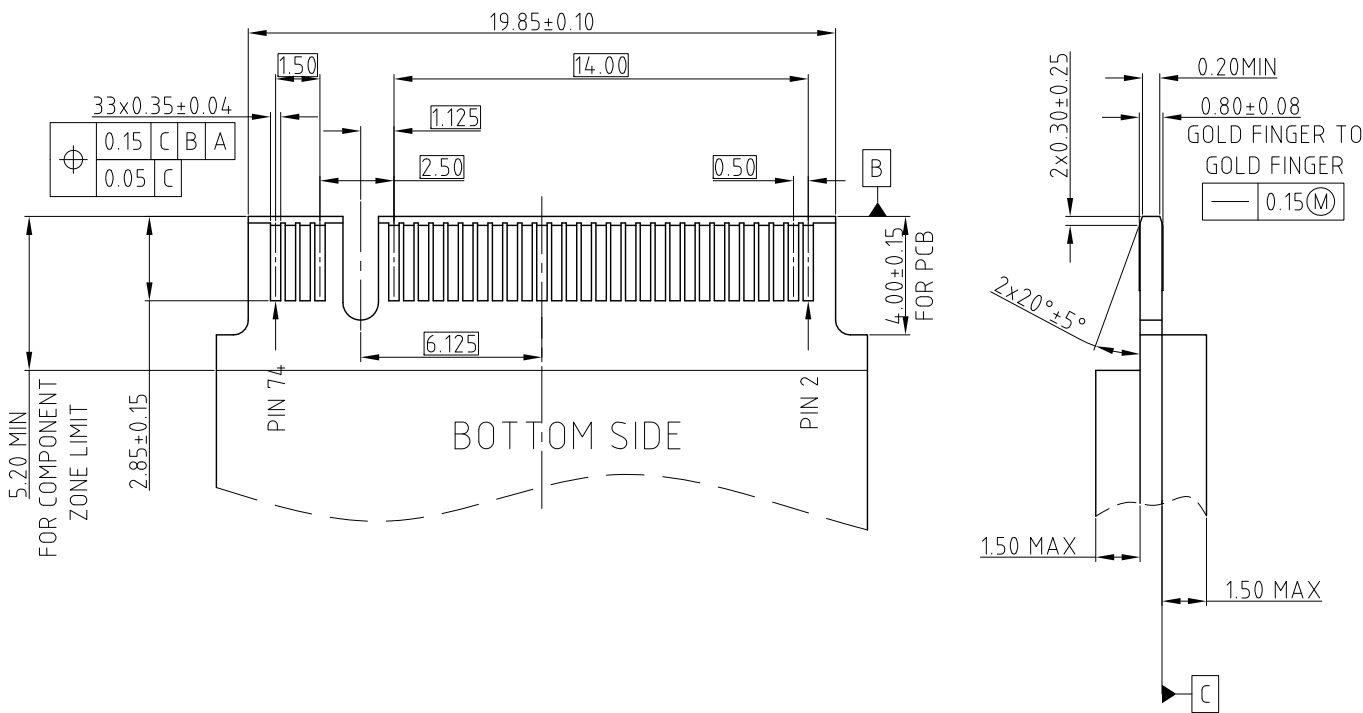
- 0: T/H B/L 1: TAPE & REEL PACKED WITH CAP
1: SMT B/L 2: TRAY PACKED WITHOUT CAP



UNLESS OTHERWISE SPECIFIED TOLERANCES		APPROVAL		DATE		Amphenol							
U.S. METRIC		DRAWN	Yunx.liu	Jul.10,2018									
.X +/—		CHECKED	Ly.yi	Jul.10,2018	TITLE								
.XX +/—		APPROVED											
.XXX +/—		DRAWING FILE : DRAWING\MDT\CMD3670MX100011X				MICRO COOL EDGE 67PIN VERTICAL NF1/NGSFF 0.5mm PITCH CONNECTOR							
FRACTIONS +/—													
ANGLES +/—		ANGLE OF PROJECTION				SIZE DRAWING NO.				REV.			
5°													
FOR MATERIALS AND FINISHES SEE NOTES						A3 C MD3670MX100011X				6			
REMOVE SHARP EDGES													
DIMENSIONS						SCALE				NONE		SHEET 1 OF 2	
— U.S. —		— INCHES —											
(METRIC)		(MM)											

REVISIONS				
SYM	ECN	DESCRIPTION	DATE	APPROVED
		SEE SHEET 1		

MODULE CARD



RECOMMENDED PCB OUTLINE (FOR T/H B/L OPTION)
TOLERANCE: ± 0.05
DATUM Z: PCB SOLDER SURFACE

UNLESS OTHERWISE SPECIFIED TOLERANCES		APPROVAL		DATE		<h1>Amphenol</h1>			
U.S. METRIC		DRAWN Yunx.liu		Jul.10,2018					
.X +/- 0.50		CHECKED Ly.yi		Jul.10,2018		TITLE MICRO COOL EDGE 67PIN VERTICAL NF1/NGSFF 0.5mm PITCH CONNECTOR			
.XX +/- 0.25		APPROVED							
.XXX +/-		DRAWING FILE :				SIZE DRAWING NO. REV. A3 C MD3670MX100011X 6			
FRACTIONS +/-		DRAWING\MDT\CMD3670MX100011X							
ANGLES +/- 5°		ANGLE OF PROJECTION				SCALE NONE SHEET 2 OF 2			
FOR MATERIALS AND FINISHES SEE NOTES									
REMOVE SHARP EDGES									
DIMENSIONS									
U.S. INCHES									
(METRIC)									
(MM)									

Mouser Electronics

Authorized Distributor

Click to View Pricing, Inventory, Delivery & Lifecycle Information:

[FCI / Amphenol:](#)

[MD3670M11000112](#)