

SIGN	DATE	DESCRIPTION	APPROVER
△	2010.04.17	The Grey code changed from RAL7004/P to RAL7035/D	Jacke
△	2010.04.17	Add cULus standard	Jacke
△	2011.08.29	The dimension are added	Aaron
△	2011.08.29	Material is changed from Brass to Steel	Aaron
△	2011.08.29	Poles is changed from 7p-24p to 2p-24p	Aaron
THIS IS CAD DRAWING, DO NOT REVISE MANUALLY!!!			

Material

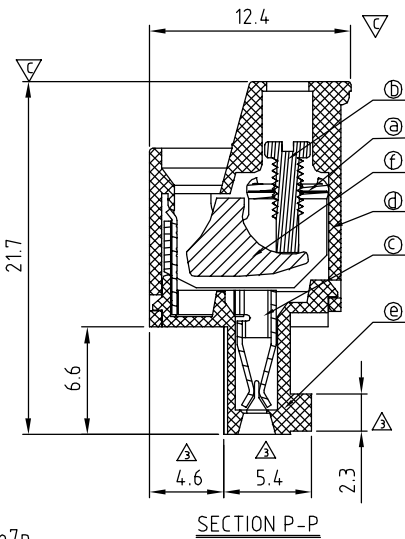
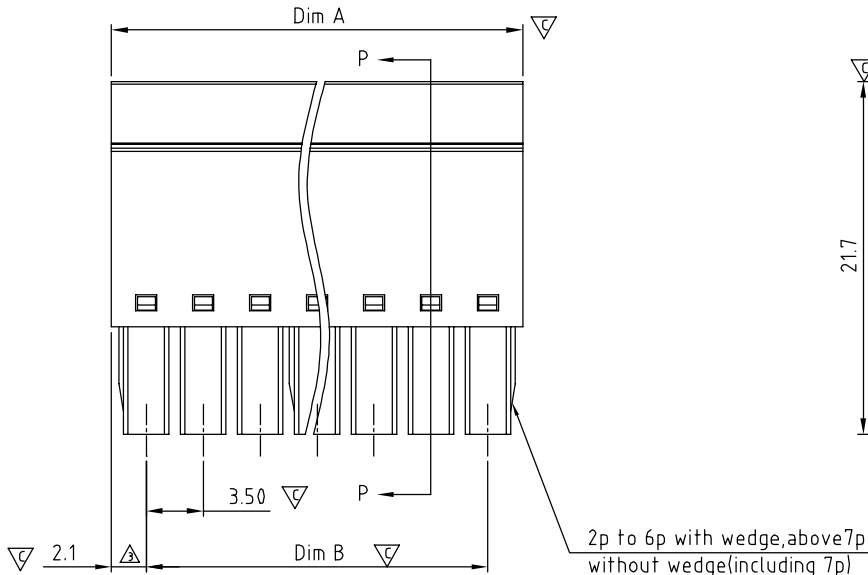
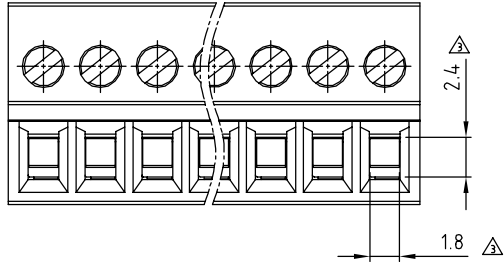
- Item a Clamp: Steel zine plated.
- Item b Terminal screw: Steel Zinc plating “-” slot type
- Item c Female contact: PhBz Tin plated
- Item d Terminal (Up body): Thermoplastic (UL94V-0)
- Item e Terminal (Down body): Thermoplastic (UL94V-0)
- Item f Clampage:Steel Zinc plated

Electrical cULus

- Voltage rating: 300VAC
- Current rating: 10A
- Wire range:
- Solid wire(AWG): 16-28
- Stranded wire(AWG): 16-28
- Torque: 1.7Lb-In
- Screw: M2
- Wire strip length: 6-7mm
- Withstanding Voltage: 1.6KV
- Operating temperature: -40°C to +115°C
- △ ● Safety approval: cULus
- Critical dimension: ∇

VM xx 1 5 x 0 xxxx G

No. OF POLES	G: Pb<40000ppm
02: 2 POLES	0000: “@”logo
∇	000A: “ANYTEK”logo
∇	Any special item by customer request.
∇	please contact sales department.
24: 24 POLES	
0	Black (RAL9005)
△ 5	Green(RAL6018/T)
6	Blue (RAL5015/A)
8	Grey(RAL7035/D)
C	Green(RAL6018/U)



Dimension

Dim A	Nx3.5+0.80	Poles	Tolerance
Dim B	(N-1)x3.5	2p-6p	±0.10
		7p-12p	±0.20
		13p-18p	±0.30
		19p-24p	±0.40

N = Number of poles

ANYTEK

CUSTOMER COPY

ALL RIGHTS RESERVED. REPRODUCTION OR ISSUE TO THIRD PARTIES IN ANY FORM WHATSOEVER IS NOT PERMITTED WITHOUT WRITTEN AUTHORITY FROM THE PROPRIETOR. PROPERTY OF ANYTEK TECHNOLOGY CO., LTD

TITLE	VM 3.5mm W/O Flange Series (2P-24P) △				DWG NO.	8VM0602		
PART NO.	VMxx15x0xxxxG				CUST NO.			
APPROVED	CHECKED	DESIGNED	DRAWN			Tolerance		
		Aaron 2011.08.29	Aaron 2011.08.29			UNIT: mm/in	X.	±0.50
						SCALE: NONE	X.X	±0.30
							X.XX	±0.10
							X°	±1°
SHEET: 01/01				REV.: D				

Mouser Electronics

Authorized Distributor

Click to View Pricing, Inventory, Delivery & Lifecycle Information:

Amphenol:

<u>VM0215500000G</u>	<u>VM0315500000G</u>	<u>VM0415500000G</u>	<u>VM0515500000G</u>	<u>VM0615500000G</u>	<u>VM0715500000G</u>
<u>VM0815500000G</u>	<u>VM0915500000G</u>	<u>VM1015500000G</u>	<u>VM1115500000G</u>	<u>VM1215500000G</u>	<u>VM1315500000G</u>
<u>VM1415500000G</u>	<u>VM1515500000G</u>	<u>VM1615500000G</u>	<u>VM1715500000G</u>	<u>VM1815500000G</u>	<u>VM1915500000G</u>
<u>VM2015500000G</u>	<u>VM2115500000G</u>	<u>VM2215500000G</u>	<u>VM2315500000G</u>	<u>VM2415500000G</u>	<u>VM0415800000G</u>
<u>VM0315800000G</u>	<u>VM0515800000G</u>	<u>VM0215000000G</u>	<u>VM0215800000G</u>	<u>VM0515000000G</u>	<u>VM1915800000G</u>
<u>VM2115800000G</u>	<u>VM1515800000G</u>	<u>VM2115000000G</u>	<u>VM2415000000G</u>	<u>VM1815000000G</u>	<u>VM1715800000G</u>
<u>VM2015000000G</u>	<u>VM2315000000G</u>	<u>VM0615800000G</u>	<u>VM1715000000G</u>	<u>VM2315800000G</u>	<u>VM2415800000G</u>
<u>VM1015800000G</u>	<u>VM2215800000G</u>	<u>VM2215000000G</u>	<u>VM2015800000G</u>	<u>VM1815800000G</u>	<u>VM1915000000G</u>
<u>VM1115000000G</u>	<u>VM1215800000G</u>	<u>VM1515000000G</u>	<u>VM1215000000G</u>	<u>VM1315800000G</u>	<u>VM1115800000G</u>
<u>VM1415000000G</u>	<u>VM1315000000G</u>	<u>VM1415800000G</u>	<u>VM1615000000G</u>	<u>VM0415000000G</u>	<u>VM0915000000G</u>
<u>VM0315000000G</u>	<u>VM0715000000G</u>	<u>VM1015000000G</u>	<u>VM0815800000G</u>	<u>VM0915800000G</u>	<u>VM0615000000G</u>
<u>VM0715800000G</u>	<u>VM0815000000G</u>	<u>VM1615800000G</u>			