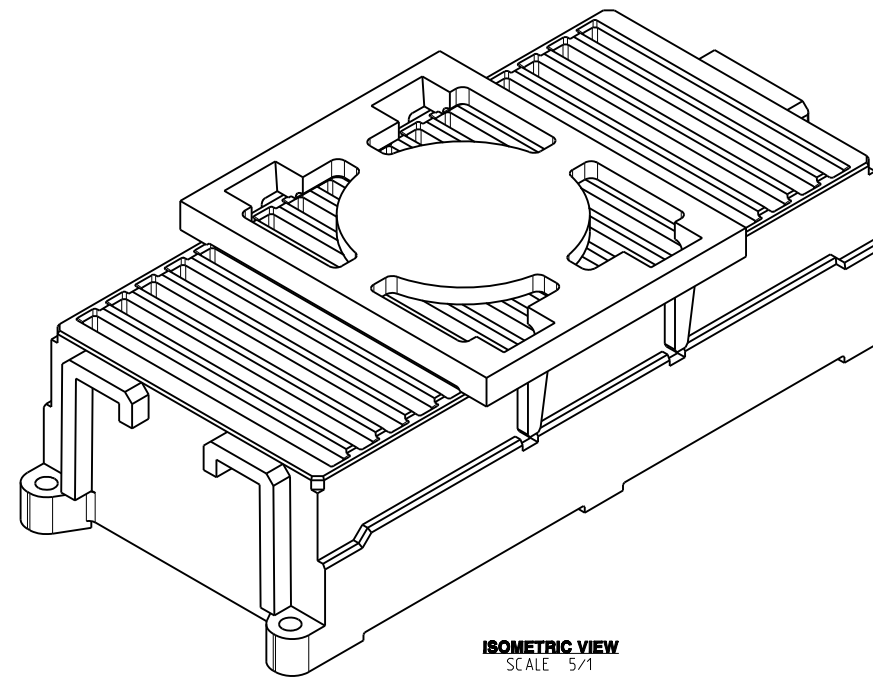


DRW NO. C-380-5342-500 SH 1 REV C

ZONE	REV	SCR NUMBER	DESCRIPTION	BY	DATE	APPROVED
ALL	A	DMAN-8WTGT9.VER01	NEW RELEASE	D.MALOON	08/03/12	D.McNAMARA
SH1	B	MCHH-9UPNUP.VER01	ADDED NOTE 11. ADDED HOLES NOT NECESSARY TO NOTE 4. REMOVED A DRILLED HOLE FROM PAD AND VIA LAYOUTS	M.CHARETH	03/18/2015	D.McNAMARA
SH2.C4-C5	C	MCHH-AAZNT.VER01	CHANGED TWO DIMS TO REFERENCE	M.CHARETH	06/17/2016	D.McNAMARA

TABLE 1	
PART NUMBER ①	DESCRIPTION
380-5342-X00	RECEPTACLE ASSY. 6 PAIR. 12 MM HIGH. 18 WAFERS. 100 OHMS. W/LOSSY
380-5442-X00	RECEPTACLE ASSY. 6 PAIR. 12 MM HIGH. 18 WAFERS. 85 OHMS. W/LOSSY
380-5542-X00	RECEPTACLE ASSY. 6 PAIR. 12 MM HIGH. 18 WAFERS. 100 OHMS. NO LOSSY
380-5642-X00	RECEPTACLE ASSY. 6 PAIR. 12 MM HIGH. 18 WAFERS. 85 OHMS. NO LOSSY



NOTES:

- ① ASSEMBLY PART NUMBER VARIES WITH PLATING OPTION AS FOLLOWS:
FOR NI SULFAMATE UNDERPLATE, 8TH DIGIT OF P/N IS 2.
FOR NANO NI UNDERPLATE, 8TH DIGIT OF P/N IS 4.
2. MAT'L:
HOUSING/WAFERS/VACUUM CAP - LCP.
CONTACTS - HIGH PERFORMANCE COPPER ALLOY. PER MTS-506.
3. 0.71 DIA SOLDER SPHERES WILL NOT BE PERFECTLY SPHERICAL AFTER REFLOW ATTACHMENT.
- ④ HOLES RECOMMENDED FOR VISUAL INSPECTION OF CONNECTOR ALIGNMENT AFTER PLACEMENT AND BEFORE REFLOW. HOLES NOT NECESSARY.
- ⑤ SOLDER BALL PROTRUSION BELOW HOUSING.
- ⑥ SEE TECHNICAL BULLETIN TB-2241 FOR DETAILED SMT PROCESSING AND PCB FOOT PRINT RECOMMENDATIONS.
- ⑦ MAXIMUM CO-PLANARITY OF THE BALL FIELD.
- ⑧ MAXIMUM RADIAL TRUE POSITION OF ANY SOLDER BALL IN RELATION TO AN IDEAL BEST FIT GRID.
9. TOLERANCES DO NOT APPLY TO REFERENCE DIMENSIONS SHOWN IN "Ø" OR BASIC DIMENSIONS SHOWN IN "□".
10. REFER TO FILE 380-5X42-XX0.STP FOR SIMPLIFIED 3D MODEL OF ASSEMBLY.
- ⑪ TOOLING HOLES USED FOR INTERNAL PROCESS ALIGNMENT AND NOT REQUIRED FOR SMT PROCESS ALIGNMENT. QUANTITY OF TOOLING HOLES IS OPTIONAL. AT MANUFACTURERS DISCRETION.

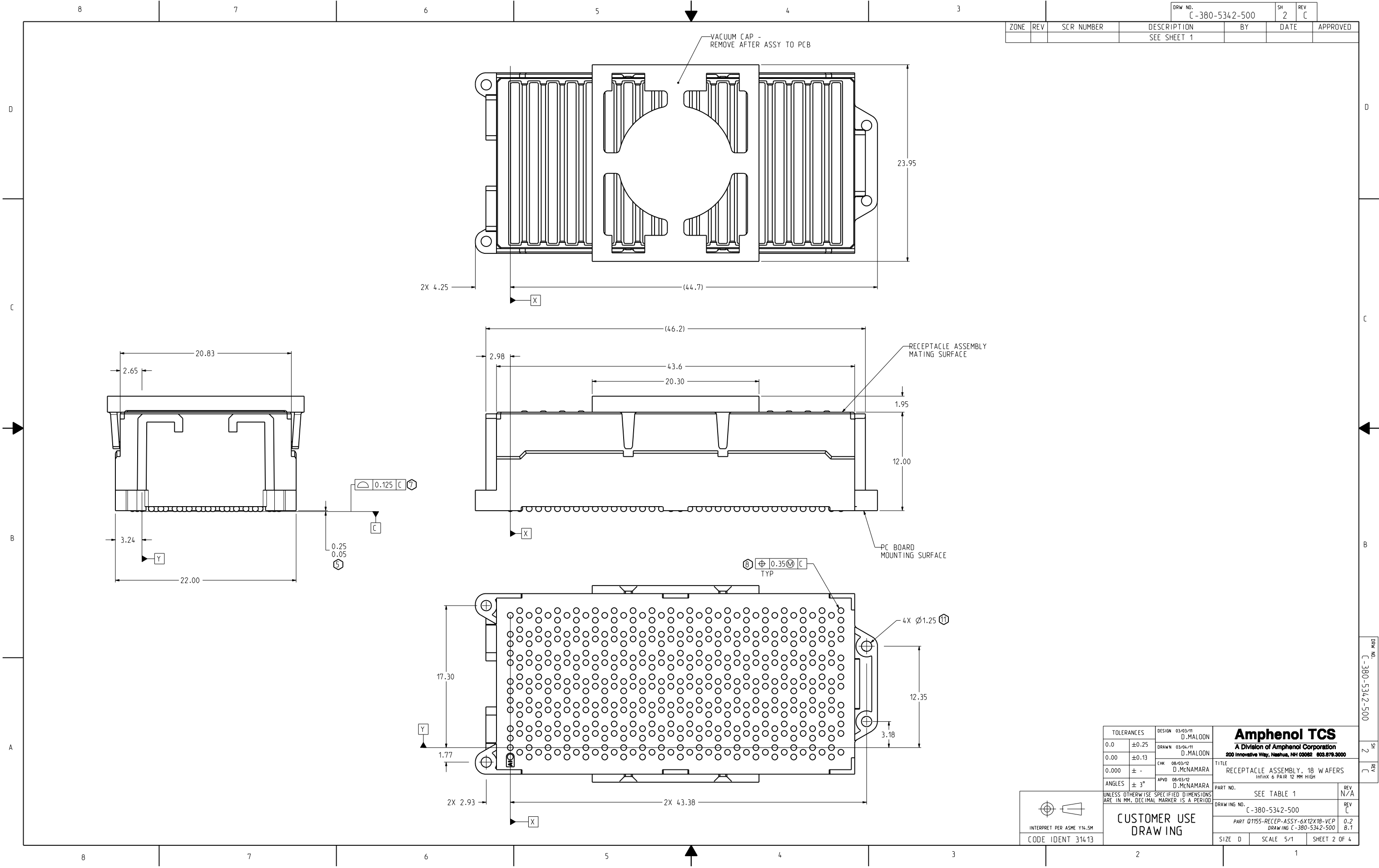
TOLERANCES		DESIGN 03/03/11 D.MALOON	Amphenol TCS A Division of Amphenol Corporation 200 Innovative Way, Nashua, NH 03082 603.879.3000
0.0	±0.25	DRAWN 03/04/11 D.MALOON	
0.00	±0.13	CHK 08/03/12 D.McNAMARA	TITLE RECEPTACLE ASSEMBLY, 18 WAFERS Infinox 6 PAIR 12 MM HIGH
0.000	± -	APVD 08/03/12 D.McNAMARA	PART NO. SEE TABLE 1 REV N/A
ANGLES		± 3°	DRAWING NO. C-380-5342-500 REV C
UNLESS OTHERWISE SPECIFIED DIMENSIONS ARE IN MM. DECIMAL MARKER IS A PERIOD		PART 01155-RECEP-ASSY-6X12X18-VCP DRAWING C-380-5342-500	
<p>INTERPRET PER ASME Y14.5M CODE IDENT 314.13</p>		CUSTOMER USE DRAWING	
		SIZE D	SCALE 5/1

DRW NO. C-380-5342-500

SH 1
REV C

DRW NO. C-380-5342-500 SH 2 REV C

ZONE	REV	SCR NUMBER	DESCRIPTION	BY	DATE	APPROVED
			SEE SHEET 1			



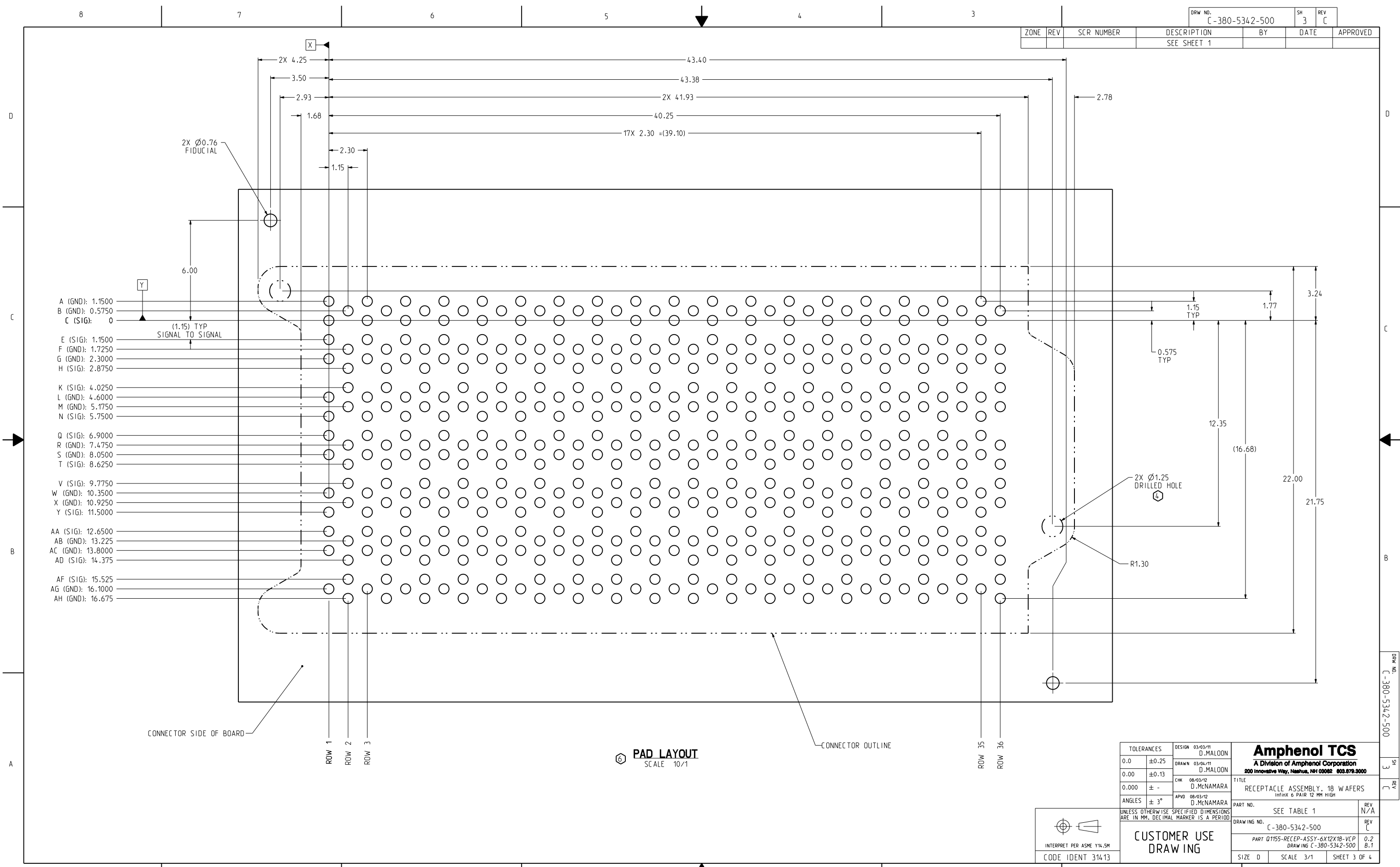
TOLERANCES	DESIGN	DATE	DESIGNER	Amphenol TCS A Division of Amphenol Corporation 200 Innovative Way, Nashua, NH 03062 603.879.3000	TITLE
0.0 ±0.25	DRAWN	03/04/11	D.MALOON		RECEPTACLE ASSEMBLY, 18 WAFERS
0.00 ±0.13	CHK	08/03/12	D.MENAMARA		Infinix 6 PAIR 12 MM HIGH
0.000 ± -	APVD	08/03/12	D.MENAMARA		
ANGLES ± 3°					
UNLESS OTHERWISE SPECIFIED DIMENSIONS ARE IN MM. DECIMAL MARKER IS A PERIOD					PART NO. SEE TABLE 1 DRAWING NO. C-380-5342-500 PART 01155-RECEP-ASSY-6X12X18-VCP DRAWING C-380-5342-500 SIZE D SCALE 5/1 SHEET 2 OF 4

INTERPRET PER ASME Y14.5M
 CODE IDENT 314.13

CUSTOMER USE
 DRAWING

DRW NO. C-380-5342-500 SH 2 REV C

ZONE	REV	SCR NUMBER	DESCRIPTION	BY	DATE	APPROVED
			SEE SHEET 1			



- A (GND): 1.1500
- B (GND): 0.5750
- C (SIG): 0
- E (SIG): 1.1500
- F (GND): 1.7250
- G (GND): 2.3000
- H (SIG): 2.8750
- K (SIG): 4.0250
- L (GND): 4.6000
- M (GND): 5.1750
- N (SIG): 5.7500
- Q (SIG): 6.9000
- R (GND): 7.4750
- S (GND): 8.0500
- T (SIG): 8.6250
- V (SIG): 9.7750
- W (GND): 10.3500
- X (GND): 10.9250
- Y (SIG): 11.5000
- AA (SIG): 12.6500
- AB (GND): 13.225
- AC (GND): 13.8000
- AD (SIG): 14.375
- AF (SIG): 15.525
- AG (GND): 16.1000
- AH (GND): 16.675

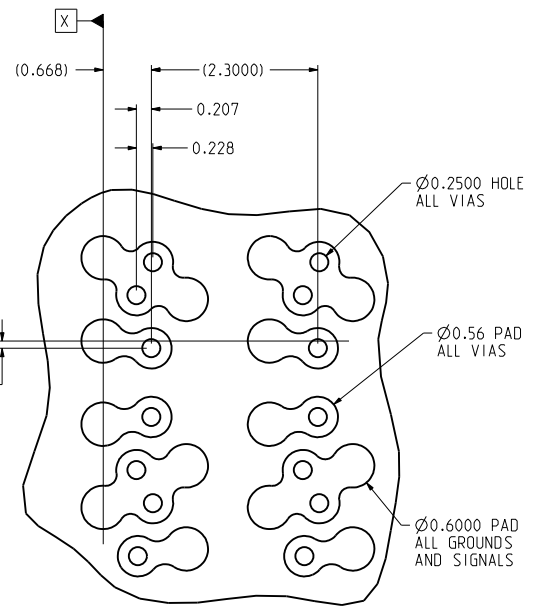
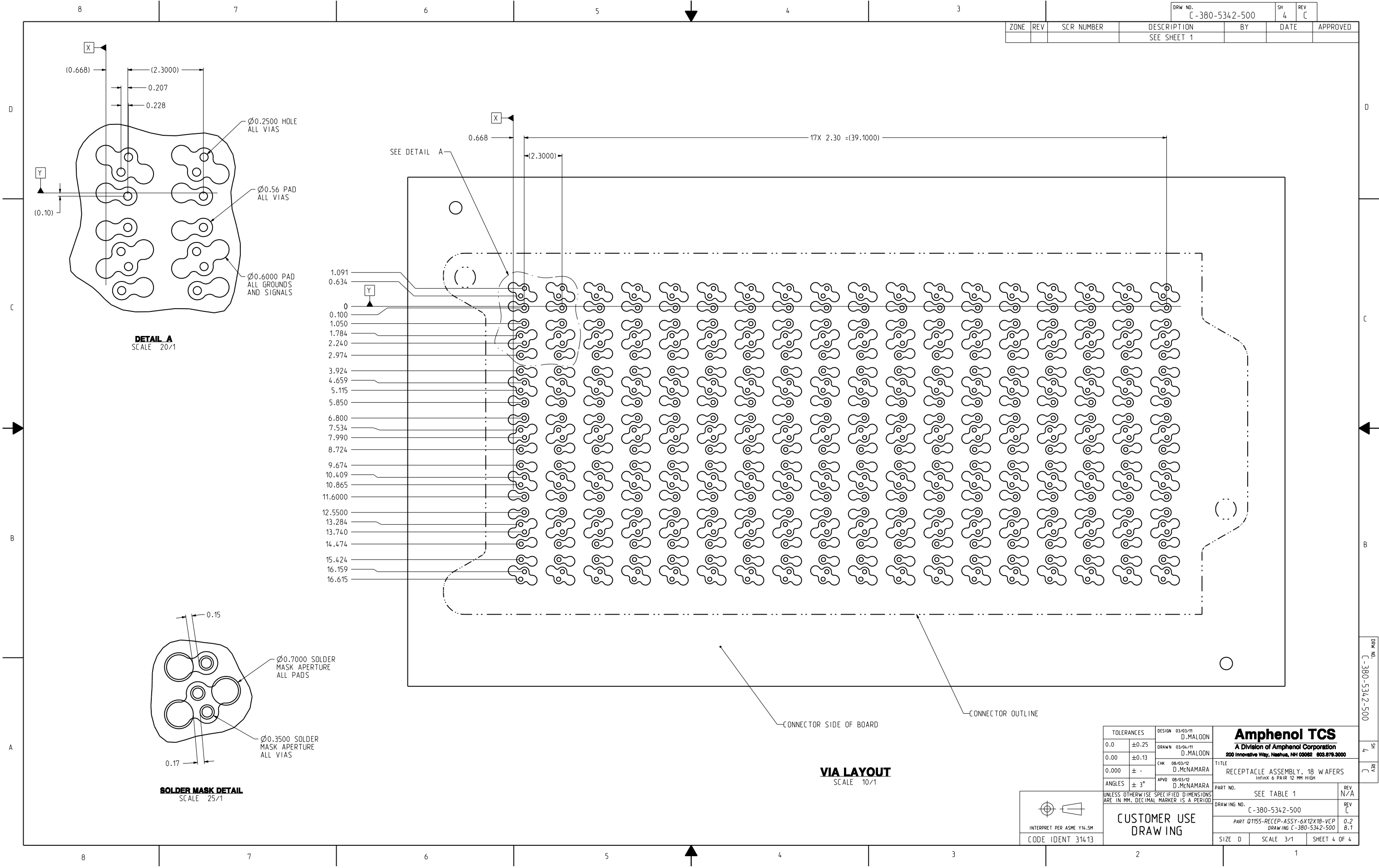
PAD LAYOUT
SCALE 10/1

TOLERANCES		DESIGN 03/03/11	Amphenol TCS	
0.0	±0.25	D.MALOON	A Division of Amphenol Corporation	
0.00	±0.13	D.MALOON	200 Innovative Way, Nashua, NH 03082 603.870.3000	
0.000	±	D.MENAMARA	TITLE RECEPTACLE ASSEMBLY, 18 WAFERS	
ANGLES	± 3°	D.MENAMARA	Infinox 6 PAIR 12 MM HIGH	
UNLESS OTHERWISE SPECIFIED DIMENSIONS ARE IN MM. DECIMAL MARKER IS A PERIOD			PART NO.	REV
			SEE TABLE 1	N/A
DRAWING NO. C-380-5342-500			REV C	
PART 01155-RECEP-ASSY-6X12X18-VCP			0.2	
DRAWING C-380-5342-500			B.1	
SIZE D	SCALE 3/1	SHEET 3 OF 4		

INTERPRET PER ASME Y14.5M
CODE IDENT 314.13

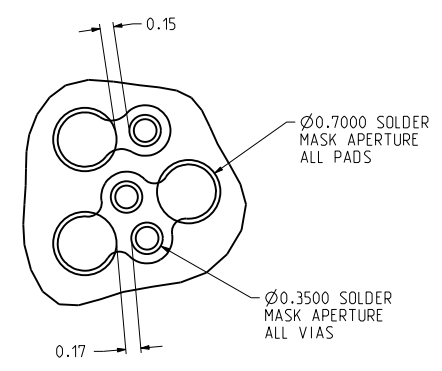
DRW NO. C-380-5342-500
SH 3
REV C

ZONE	REV	SCR NUMBER	DESCRIPTION	BY	DATE	APPROVED
			SEE SHEET 1			



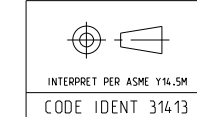
DETAIL A
SCALE 20/1

- 1.091
- 0.634
- 0
- 0.100
- 1.050
- 1.784
- 2.240
- 2.974
- 3.924
- 4.659
- 5.115
- 5.850
- 6.800
- 7.534
- 7.990
- 8.724
- 9.674
- 10.409
- 10.865
- 11.6000
- 12.5500
- 13.284
- 13.740
- 14.474
- 15.424
- 16.159
- 16.615



SOLDER MASK DETAIL
SCALE 25/1

VIA LAYOUT
SCALE 10/1



TOLERANCES	DESIGN	03/03/11	D.MALOON
0.0	±0.25	DRAWN	03/04/11
0.00	±0.13	D.MALOON	
0.000	± -	CHK	08/03/12
		D.MENAMARA	
ANGLES	± 3°	APVD	08/03/12
		D.MENAMARA	

Amphenol TCS A Division of Amphenol Corporation 200 Innovative Way, Nashua, NH 03082 603.870.3000	
TITLE	RECEPTACLE ASSEMBLY, 18 WAFERS Infinox 6 PAIR 12 MM HIGH
PART NO.	SEE TABLE 1
REV	N/A
DRAWING NO.	C-380-5342-500
REV	C
PART	01155-RECEP-ASSY-6X12X18-VCP
SCALE	3/1
SHEET	4 OF 4
SIZE	D

CUSTOMER USE
DRAWING

DRAW NO. C-380-5342-500 SH 4 REV C

Mouser Electronics

Authorized Distributor

Click to View Pricing, Inventory, Delivery & Lifecycle Information:

[Amphenol:](#)

[380-5342-200](#)