

8

7

6

5

4

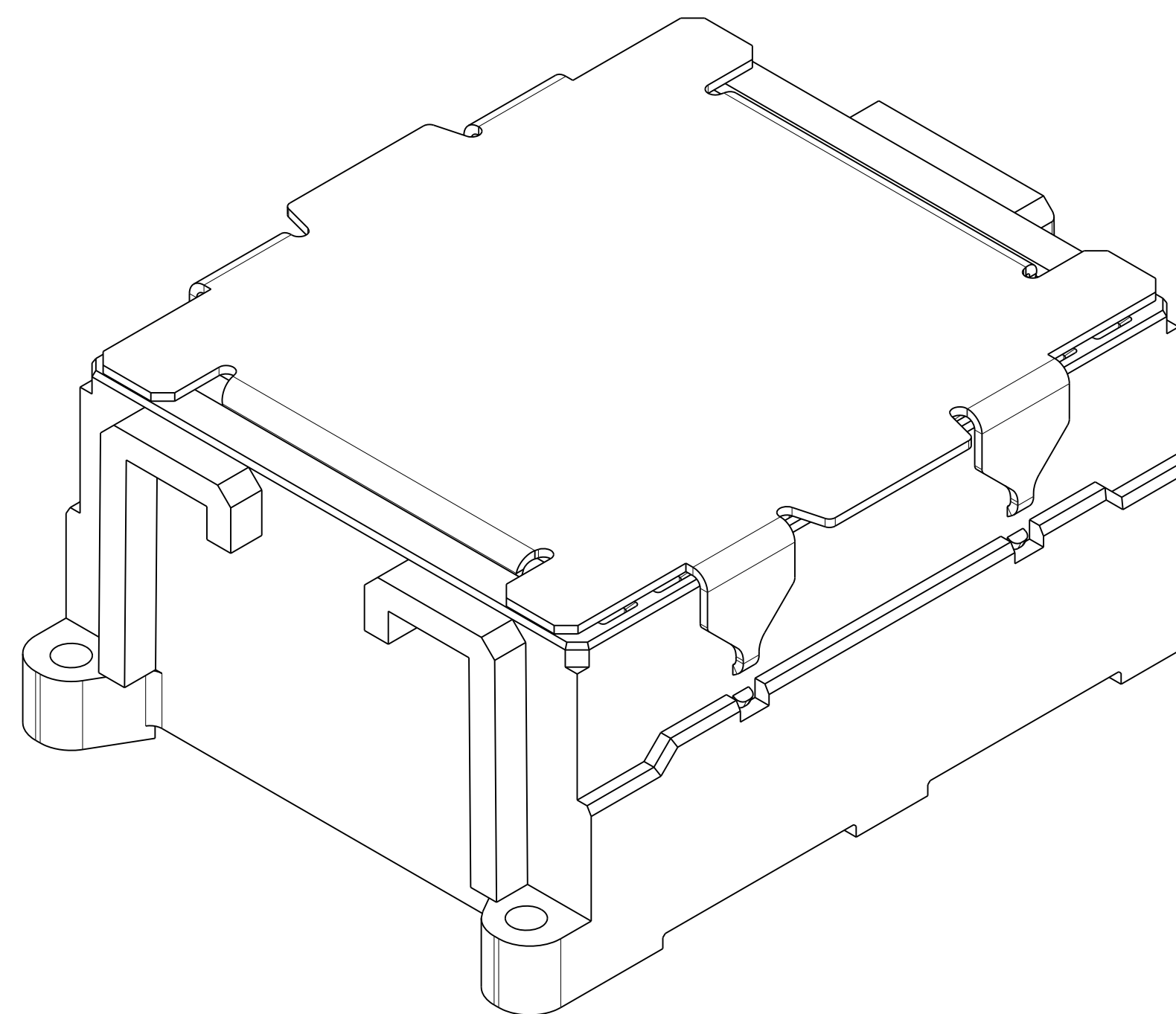
3

DRW NO. C-380-5341-500 SH 1 REV B

ZONE	REV	SCR NUMBER	DESCRIPTION	BY	DATE	APPROVED
ALL	A	DMAN-8W TGT9.VER01	NEW RELEASE	D.MALOON	08/03/12	D.McNAMARA
SHT1 SHT1 SHT3. 4	B	MCHH-9RUREZ.VER01	ADDED NOTE 11. ADDED HOLES NOT NECESSARY TO NOTE 4 ADDED MOUNTING HOLE TO PCB	HCL-AK	12/29/2014	M.CHARETH

TABLE 1

PART NUMBER ①	DESCRIPTION
380-5341-X00	RECEPTACLE ASSY. 6 PAIR. 12 MM HIGH. 10 WAFERS. 100 OHMS. W/LOSSY
380-5441-X00	RECEPTACLE ASSY. 6 PAIR. 12 MM HIGH. 10 WAFERS. 85 OHMS. W/LOSSY
380-5541-X00	RECEPTACLE ASSY. 6 PAIR. 12 MM HIGH. 10 WAFERS. 100 OHMS. NO LOSSY
380-5641-X00	RECEPTACLE ASSY. 6 PAIR. 12 MM HIGH. 10 WAFERS. 85 OHMS. NO LOSSY



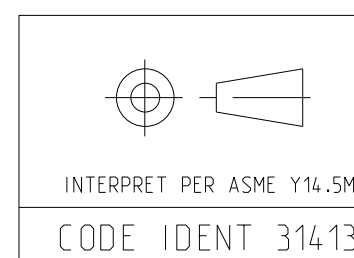
ISOMETRIC VIEW
SCALE 6/1

NOTES:

- ① ASSEMBLY PART NUMBER VARIES WITH PLATING OPTION AS FOLLOWS:
FOR NI SULFAMATE UNDERPLATE, 8TH DIGIT OF P/N IS 2.
FOR NANO NI UNDERPLATE, 8TH DIGIT OF P/N IS 4.
- 2. MAT'L:
HOUSING/WAFERS/VACUUM CAP - LCP.
CONTACTS - HIGH PERFORMANCE COPPER ALLOY. PER MTS-506.
- 3. 0.71 DIA SOLDER SPHERES WILL NOT BE PERFECTLY SPHERICAL AFTER REFLOW ATTACHMENT.
- ④ HOLES RECOMMENDED FOR VISUAL INSPECTION OF CONNECTOR ALIGNMENT AFTER PLACEMENT AND BEFORE REFLOW. HOLES NOT NECESSARY.
- ⑤ SOLDER BALL PROTRUSION BELOW HOUSING.
- ⑥ SEE TECHNICAL BULLETIN TB-2241 FOR DETAILED SMT PROCESSING AND PCB FOOT PRINT RECOMMENDATIONS.
- ⑦ MAXIMUM CO-PLANARITY OF THE BALL FIELD.
- ⑧ MAXIMUM RADIAL TRUE POSITION OF ANY SOLDER BALL IN RELATION TO AN IDEAL BEST FIT GRID.
- 9. TOLERANCES DO NOT APPLY TO REFERENCE DIMENSIONS SHOWN IN "Ø" OR BASIC DIMENSIONS SHOWN IN "□".
- 10. REFER TO FILE 380-5X41-XX0.STP FOR SIMPLIFIED 3D MODEL OF ASSEMBLY.
- ⑪ TOOLING HOLES USED FOR INTERNAL PROCESS ALIGNMENT AND NOT REQUIRED FOR SMT PROCESS ALIGNMENT. QUANTITY OF TOOLING HOLES IS OPTIONAL, AT MANUFACTURERS DISCRETION.

TOLERANCES	DESIGN	12/13/10 D.MALOON
0.0 ±0.25	DRAWN	07/12/11 D.MALOON
0.00 ±0.13	CHK	08/03/12 D.McNAMARA
0.000 ± -	APVD	08/03/12 D.McNAMARA
ANGLES ± 3°		

Amphenol TCS
A Division of Amphenol Corporation
200 Innovative Way, Nashua, NH 03082 603.879.3000



UNLESS OTHERWISE SPECIFIED DIMENSIONS ARE IN MM. DECIMAL MARKER IS A PERIOD		REV
TITLE RECEPTACLE ASSY. 10 WAFERS INFINIX 6 PAIR, 12 MM HIGH		N/A
PART NO. SEE TABLE 1		REV B
DRAWING NO. C-380-5341-500		A.3
SIZE D	SCALE 5/1	SHEET 1 OF 4

DRW NO. C-380-5341-500

SH 1 REV B

8

7

6

5

4

3

2

1

8

7

6

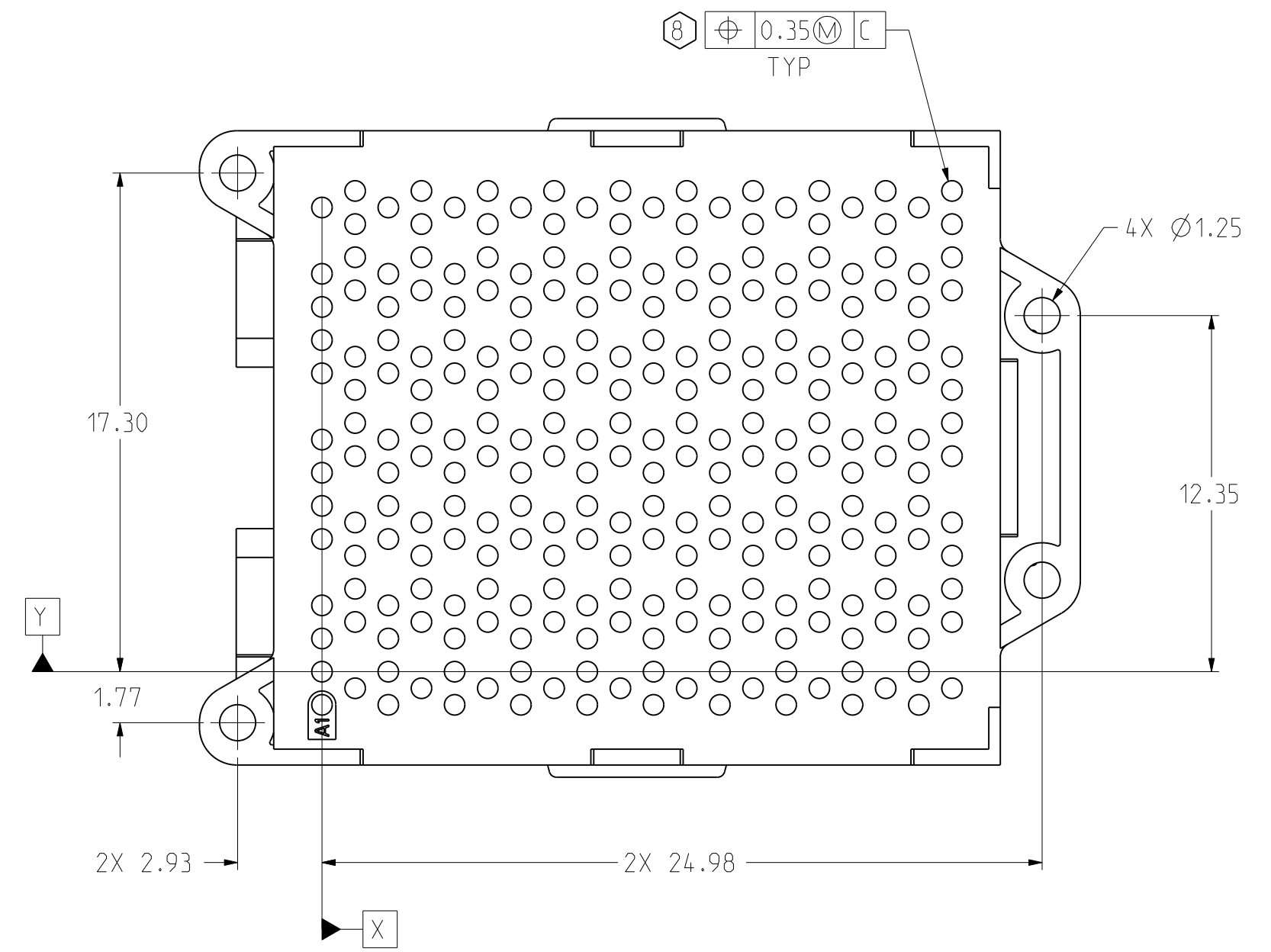
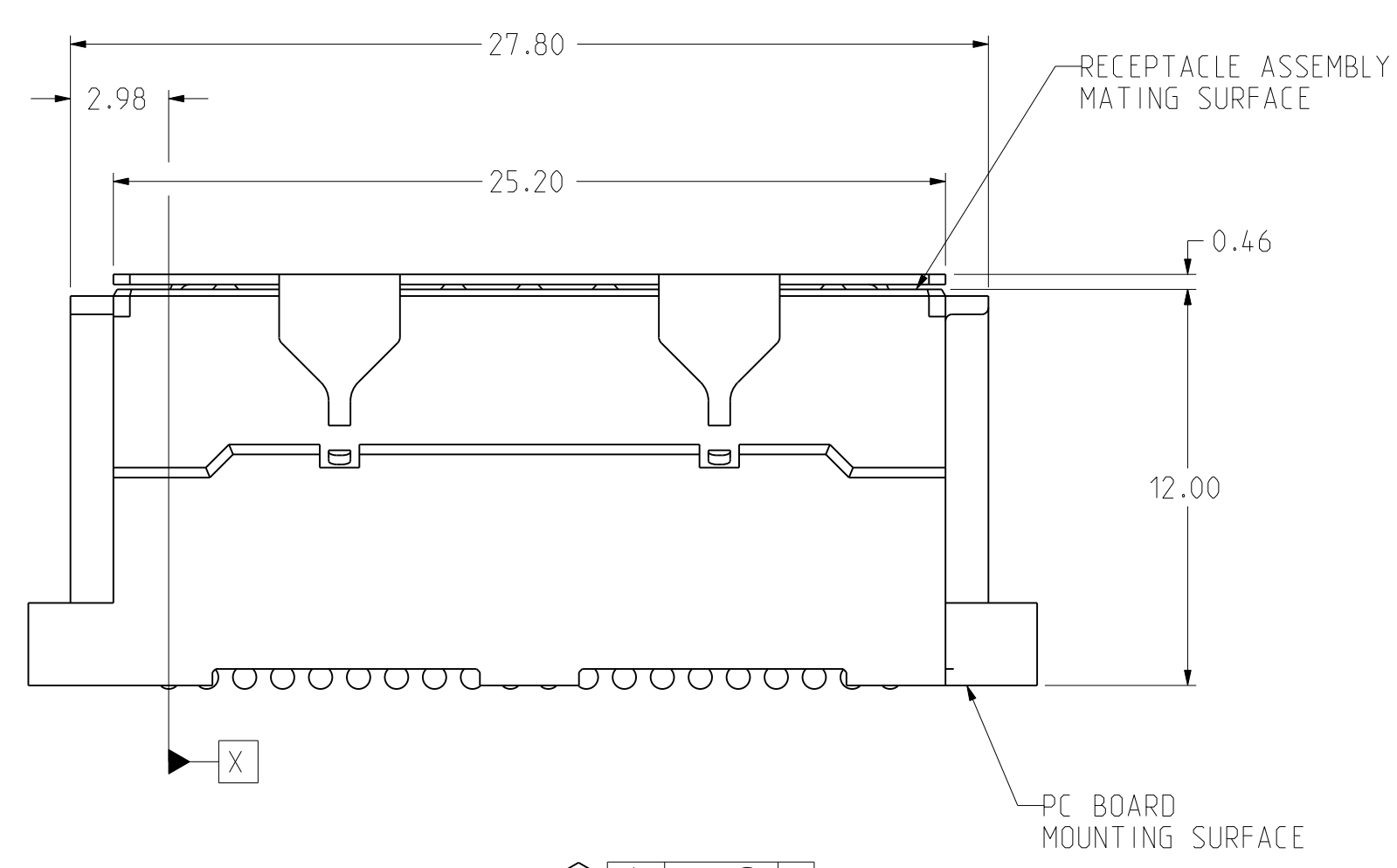
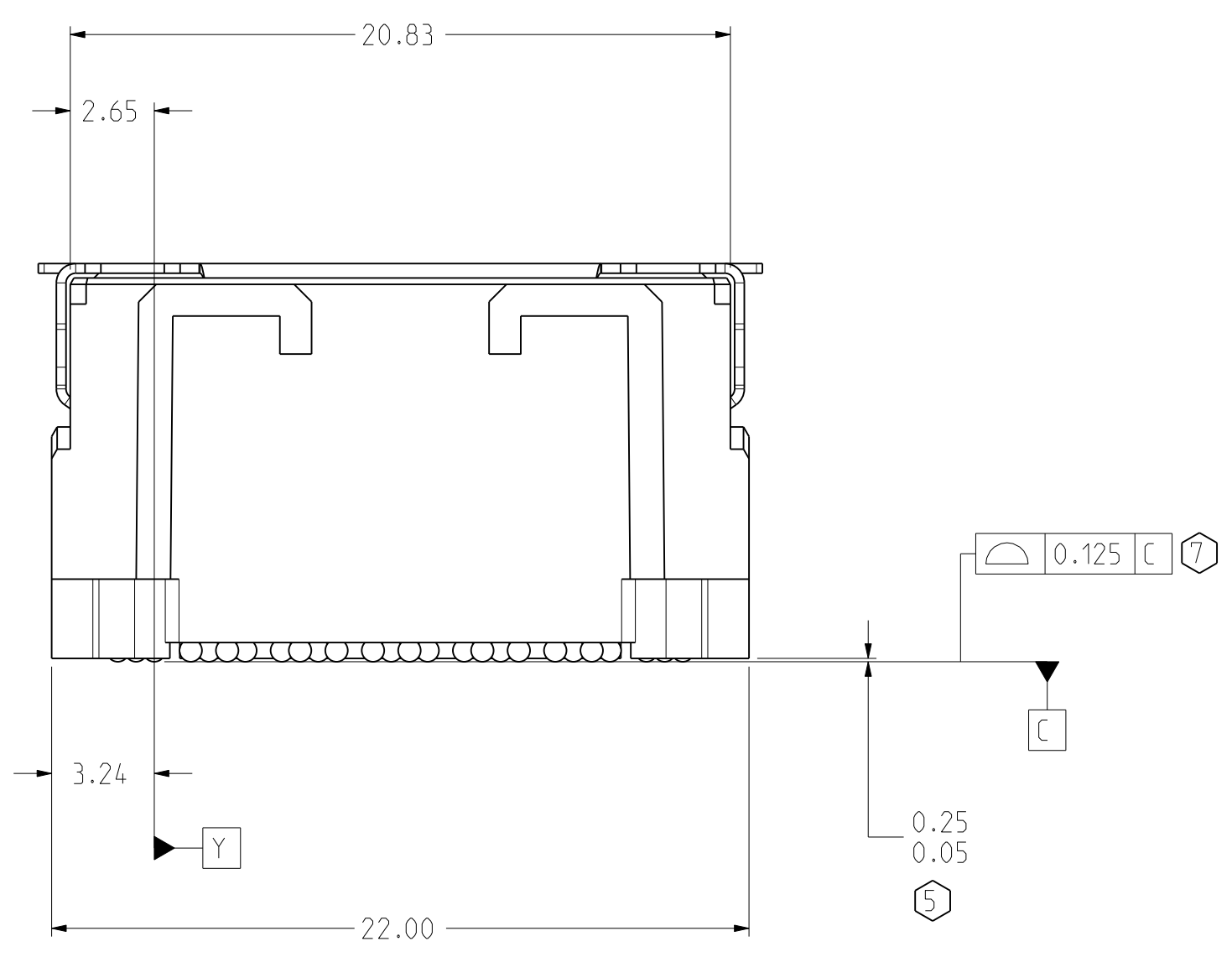
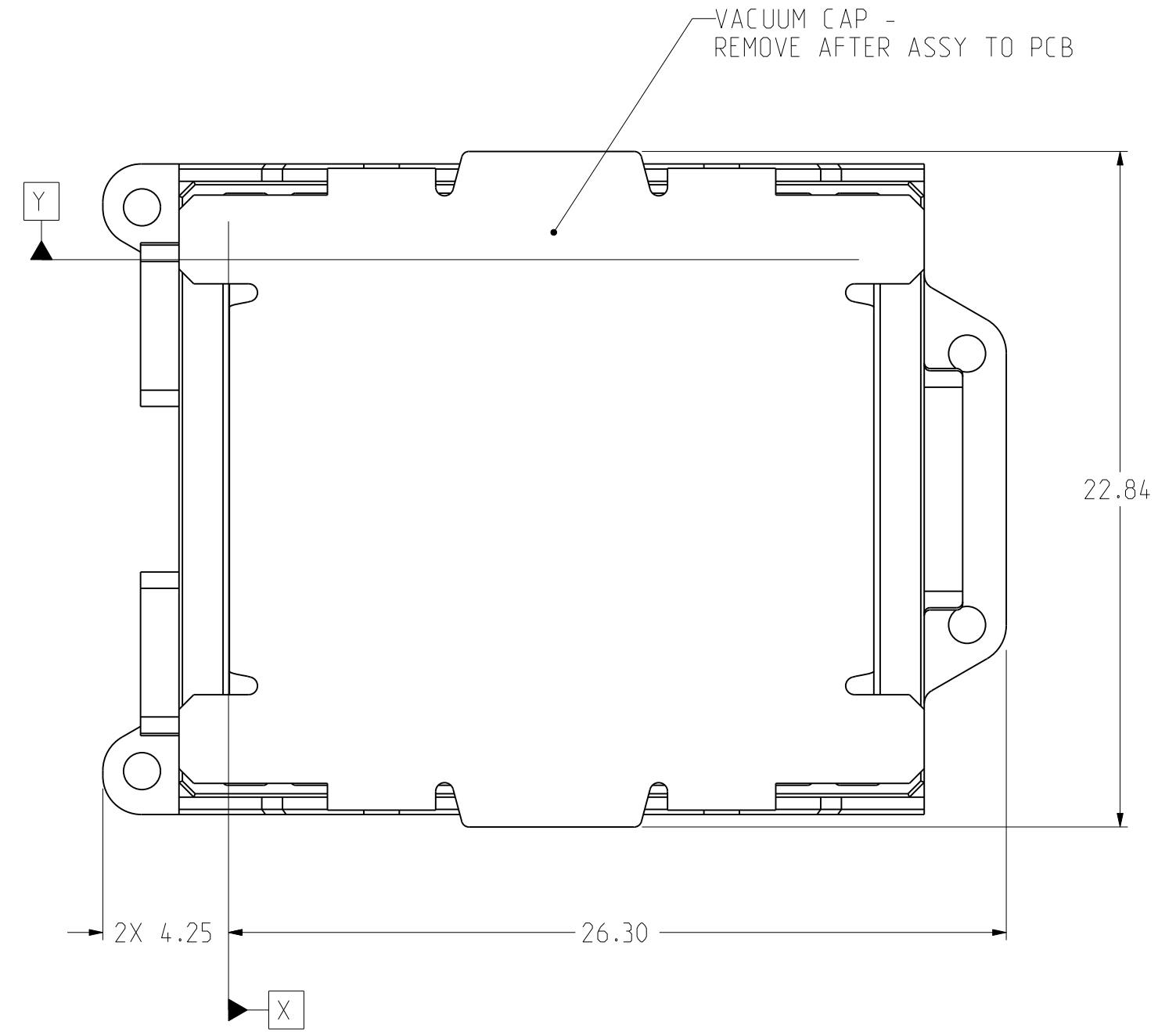
5

4

3

DRW NO. C-380-5341-500 SH 2 REV B

ZONE	REV	SCR NUMBER	DESCRIPTION	BY	DATE	APPROVED
			SEE SHEET 1			

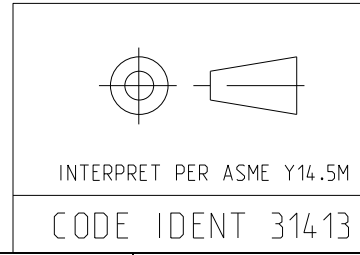


TOLERANCES	DESIGN	12/13/10	D.MALOON
0.0	±0.25	DRAWN	07/12/11
0.00	±0.13	CHK	08/03/12
0.000	± -	APVD	08/03/12
ANGLES	± 3°		

Amphenol TCS
 A Division of Amphenol Corporation
 200 Innovative Way, Nashua, NH 03062 603.879.3000

TITLE: RECEPTACLE ASSY - 10 WAFERS
 IntInX 6 PAIR, 12 MM HIGH

UNLESS OTHERWISE SPECIFIED DIMENSIONS ARE IN MM. DECIMAL MARKER IS A PERIOD.



CUSTOMER USE
 DRAWING

PART NO.	SEE TABLE 1	REV	N/A
DRAWING NO.	C-380-5341-500	REV	B
PART:	Q1155-RECEP-ASSY-6X12X10-VC	1.8	
DRAWING:	C-380-5341-500	A.3	
SIZE	D	SCALE	5/1
		SHEET	2 OF 4

DRW NO. C-380-5341-500

SH 2 REV B

8

7

6

5

4

3

2

1

8

7

6

5

4

3

DRW NO. C-380-5341-500 SH 3 REV B

ZONE	REV	SCR NUMBER	DESCRIPTION	BY	DATE	APPROVED
			SEE SHEET 1			

D

C

B

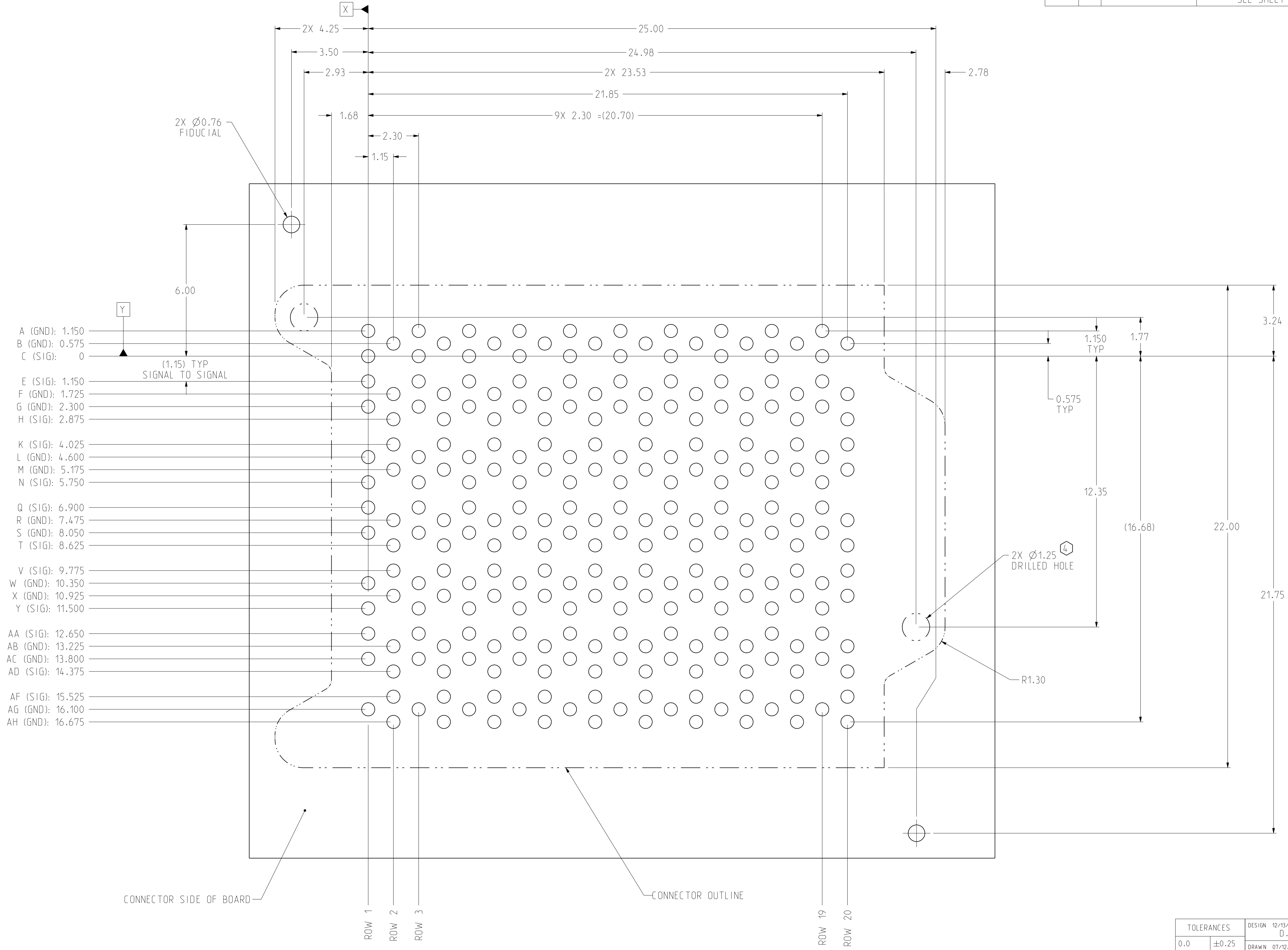
A

D

C

B

A



- A (GND): 1.150
- B (GND): 0.575
- C (SIG): 0
- E (SIG): 1.150
- F (GND): 1.725
- G (GND): 2.300
- H (SIG): 2.875
- K (SIG): 4.025
- L (GND): 4.600
- M (GND): 5.175
- N (SIG): 5.750
- Q (SIG): 6.900
- R (GND): 7.475
- S (GND): 8.050
- T (SIG): 8.625
- V (SIG): 9.775
- W (GND): 10.350
- X (GND): 10.925
- Y (SIG): 11.500
- AA (SIG): 12.650
- AB (GND): 13.225
- AC (GND): 13.800
- AD (SIG): 14.375
- AF (SIG): 15.525
- AG (GND): 16.100
- AH (GND): 16.675

CONNECTOR SIDE OF BOARD

CONNECTOR OUTLINE

ROW 1

ROW 2

ROW 3

ROW 19

ROW 20

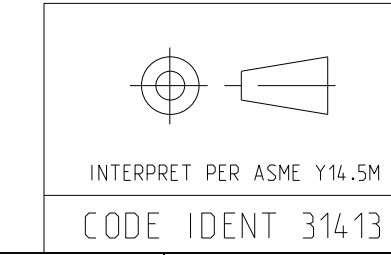
PAD LAYOUT
SCALE 10/1

TOLERANCES	DESIGN	12/13/10
0.0	±0.25	D.MALOON
0.00	±0.13	D.MALOON
0.000	± -	D.McNAMARA
ANGLES	± 3°	D.McNAMARA

Amphenol TCS
A Division of Amphenol Corporation
200 Innovative Way, Nashua, NH 03082 603.879.3000

TITLE: RECEPTACLE ASSY. 10 WAFERS
Infinix 6 PAIR, 12 MM HIGH

PART NO. SEE TABLE 1
DRAWING NO. C-380-5341-500



UNLESS OTHERWISE SPECIFIED DIMENSIONS ARE IN MM. DECIMAL MARKER IS A PERIOD		REV N/A
CUSTOMER USE DRAWING		REV B
PART: Q1155-RECEP-ASSY-6X12X10-VC	SCALE 3/1	1.8
DRAWING: C-380-5341-500	SHEET 3 OF 4	A.3

DRW NO. C-380-5341-500

SH 3

REV B

8

7

6

5

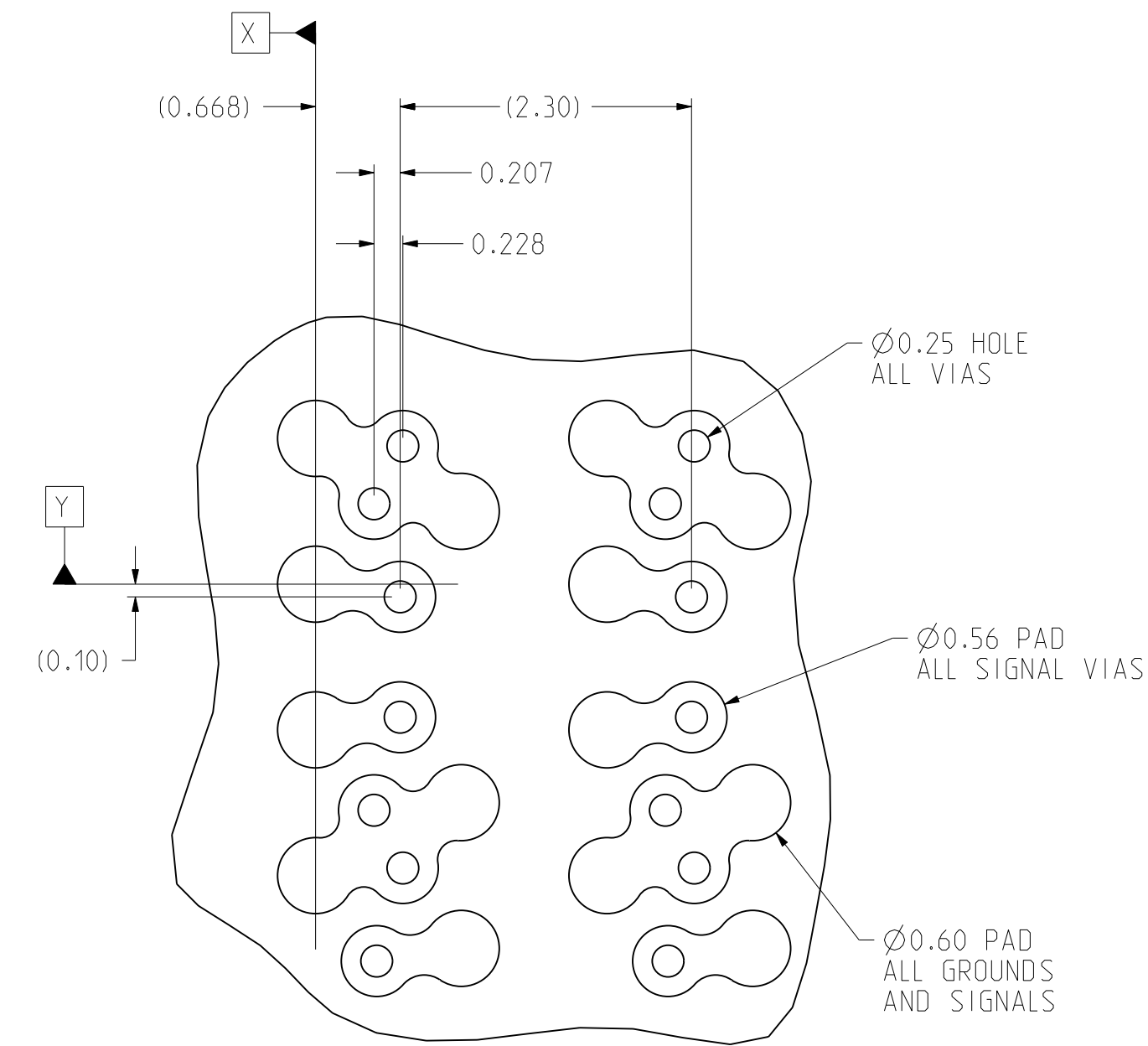
4

3

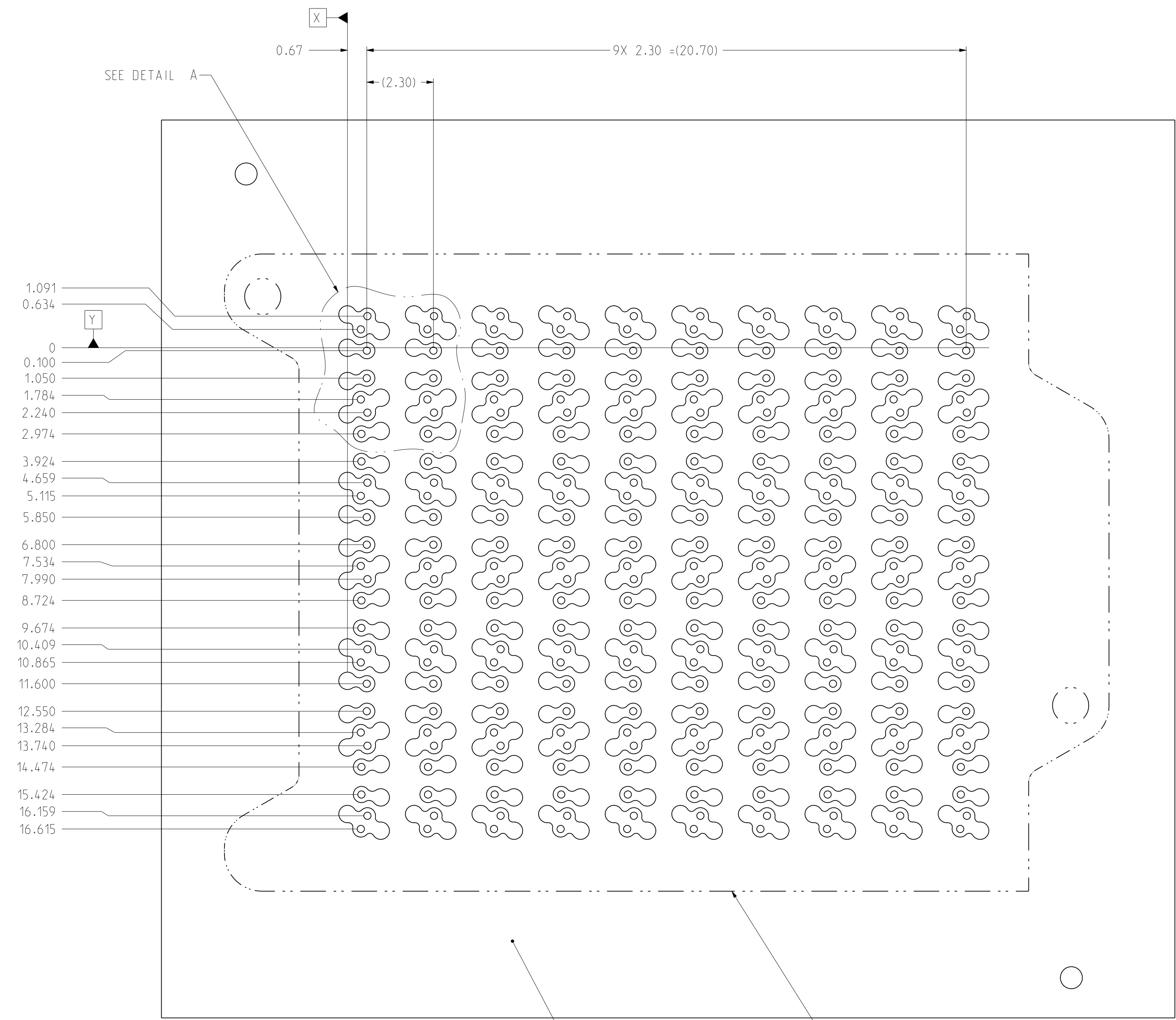
2

1

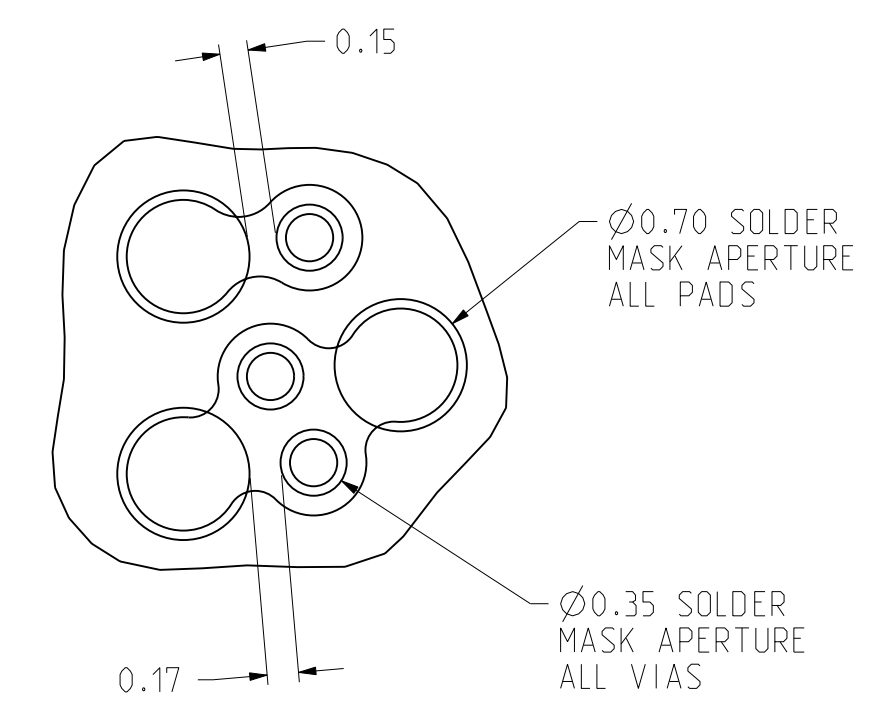
ZONE	REV	SCR NUMBER	DESCRIPTION	BY	DATE	APPROVED
			SEE SHEET 1			



DETAIL A
SCALE 20/1

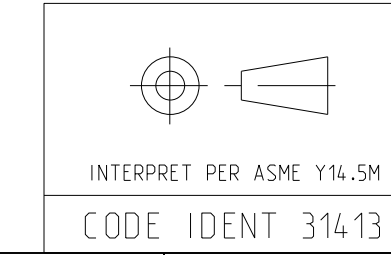


VIA LAYOUT
SCALE 10/1



SOLDER MASK DETAIL
SCALE 25/1

TOLERANCES		DESIGN 12/13/10 D.MALOON	Amphenol TCS A Division of Amphenol Corporation 200 Innovative Way, Nashua, NH 03082 603.879.3000	TITLE RECEPTACLE ASSY - 10 WAFERS IntInX 6 PAIR, 12 MM HIGH	
0.0	±0.25	DRAWN 07/12/11 D.MALOON			
0.00	±0.13	CHK 08/03/12 D.McNAMARA			
0.000	± -	APVD 08/03/12 D.McNAMARA			
ANGLES	± 3°		PART NO.	SEE TABLE 1	
UNLESS OTHERWISE SPECIFIED DIMENSIONS ARE IN MM. DECIMAL MARKER IS A PERIOD			DRAWING NO.	C-380-5341-500	
CUSTOMER USE DRAWING			PART:	Q1155-RECEP-ASSY-6X12X10-VC	
			DRAWING:	C-380-5341-500	
SIZE	D	SCALE	3/1	SHEET	4 OF 4



C-380-5341-500

SH 4
REV B

Mouser Electronics

Authorized Distributor

Click to View Pricing, Inventory, Delivery & Lifecycle Information:

[Amphenol:](#)

[380-5341-200](#)