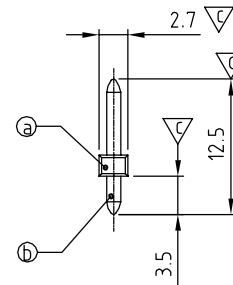
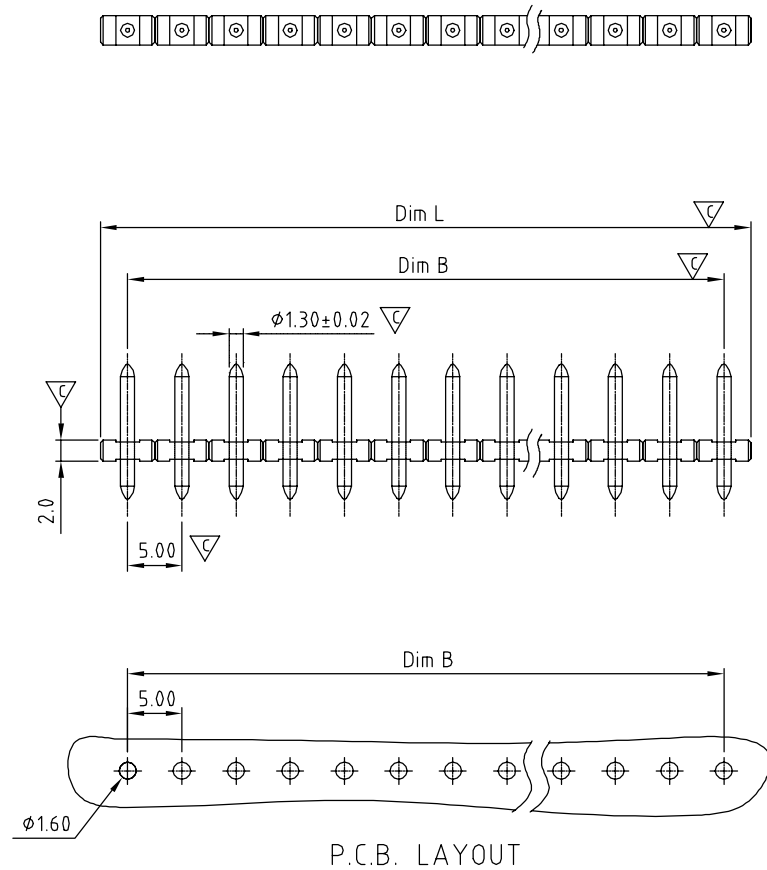






SIGN	DATE	DESCRIPTION	APPROVER
△			
THIS IS CAD DRAWING, DO NOT REVISE MANUALLY!!!			



Material:

- Item ② Terminal(housing): Thermoplastic (UL94V-0)
- Item ③ Contact pin: Brass

Electrical:

	UL / VDE / TUV
● Voltage rating:	300V / 300V /300V
● Current rating:	15A / 12A/ 15A
● Withstanding Voltage:	1.6KV / 2.5KV /2.5KV
● Operating temperature:	-40°C to +115°C (-40°C to +130°C)
● Soldering temperature:	PA66,260°C±5°C/5 Sec (PA46,280°C/10Sec)
● Safety Approval:	  
● Critical dimension:	

OP xx 0 0 x x xxxx G

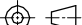
POLES -
02 pole
... ..
24 pole

- G RoHS compliant (lead<4%)
In copper Alloy
- 0000: Standard
Any special item by customer request.
please contact sales department.
- 0 PA 66
- 1 PA46

- 0 Tin plated 200u"
- 1 Gold plateing 10u"
- 2 Gold flash

	Dim L	Dim B
2-5p	± 0.10	± 0.10
6-9p	± 0.15	± 0.15
10-13p	± 0.20	± 0.20
14-17p	± 0.25	± 0.25
18-21p	± 0.30	± 0.30
22-24p	± 0.40	± 0.40

N = Number of poles
Dim L = $N \times 5.0$
Dim B = $(N-1) \times 5.0$ \longleftrightarrow

<h1>ANYTEK</h1>				<h2>CUSTOMER COPY</h2> <p>ALL RIGHTS RESERVED. REPRODUCTION OR ISSUE TO THIRD PARTIES IN ANY FORM WHATEVER IS NOT PERMITTED WITHOUT WRITTEN AUTHORITY FROM THE PROPRIETOR. PROPERTY OF ANYTEK TECHNOLOGY CO., LTD</p>			
TITLE		OP 5.0 Series 12.5mm					
PART NO.		OPxx00xxxxxxG			DWG NO.		80P0085
APPROVED		CHECKED		DESIGNED	DRAWN	CUST NO.	
				Chen Bo 09/24 '12	Chen Bo 09/24 '12		
						UNIT: mm	X. ±0.50
						SCALE: NONE	X.X ±0.30
						REV: B	X.XX ±0.10
				SHEET: 01/01			X° ±1°

Mouser Electronics

Authorized Distributor

Click to View Pricing, Inventory, Delivery & Lifecycle Information:

Amphenol:

<u>OP0300000000G</u>	<u>OP0200000000G</u>	<u>OP0400000000G</u>	<u>OP0500000000G</u>	<u>OP0600000000G</u>	<u>OP0700000000G</u>
<u>OP0800000000G</u>	<u>OP0900000000G</u>	<u>OP1000000000G</u>	<u>OP1100000000G</u>	<u>OP1200000000G</u>	<u>OP1300000000G</u>
<u>OP1400000000G</u>	<u>OP1500000000G</u>	<u>OP1600000000G</u>	<u>OP1700000000G</u>	<u>OP1800000000G</u>	<u>OP1900000000G</u>
<u>OP2000000000G</u>	<u>OP2100000000G</u>	<u>OP2200000000G</u>	<u>OP2300000000G</u>	<u>OP2400000000G</u>	