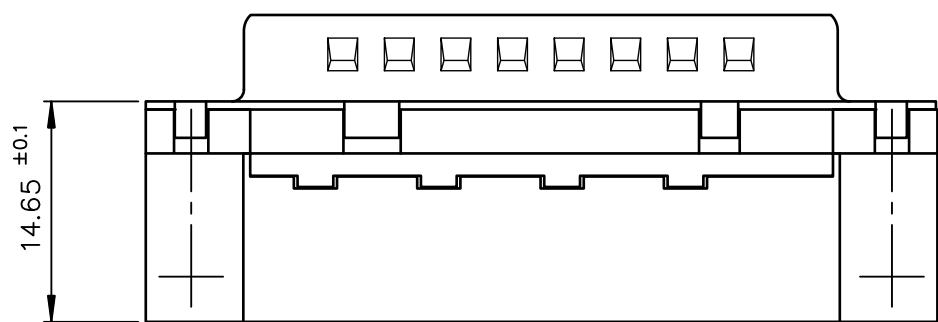
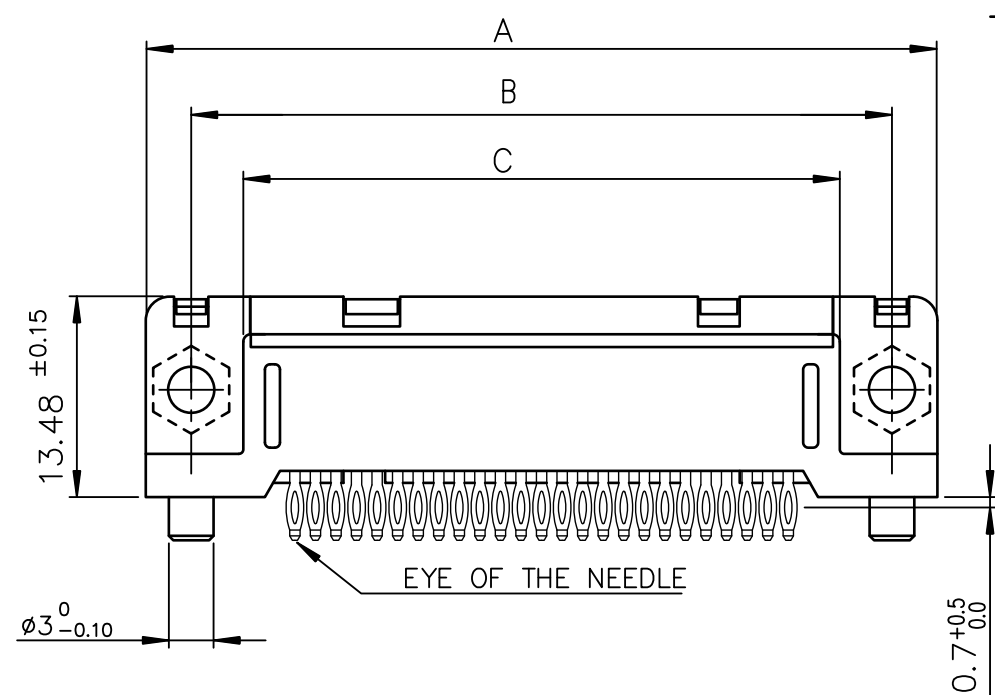




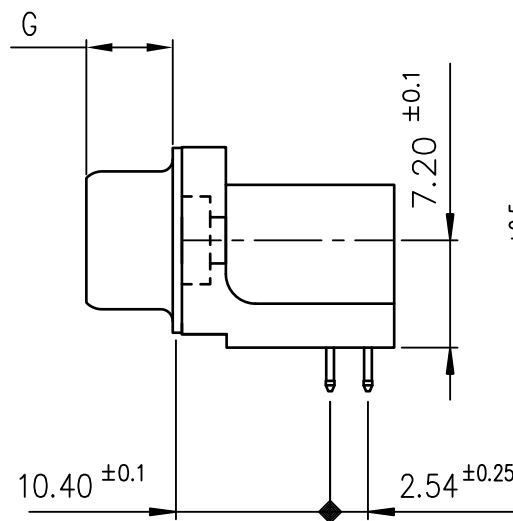
FCIconnect.com

Copyright FCI

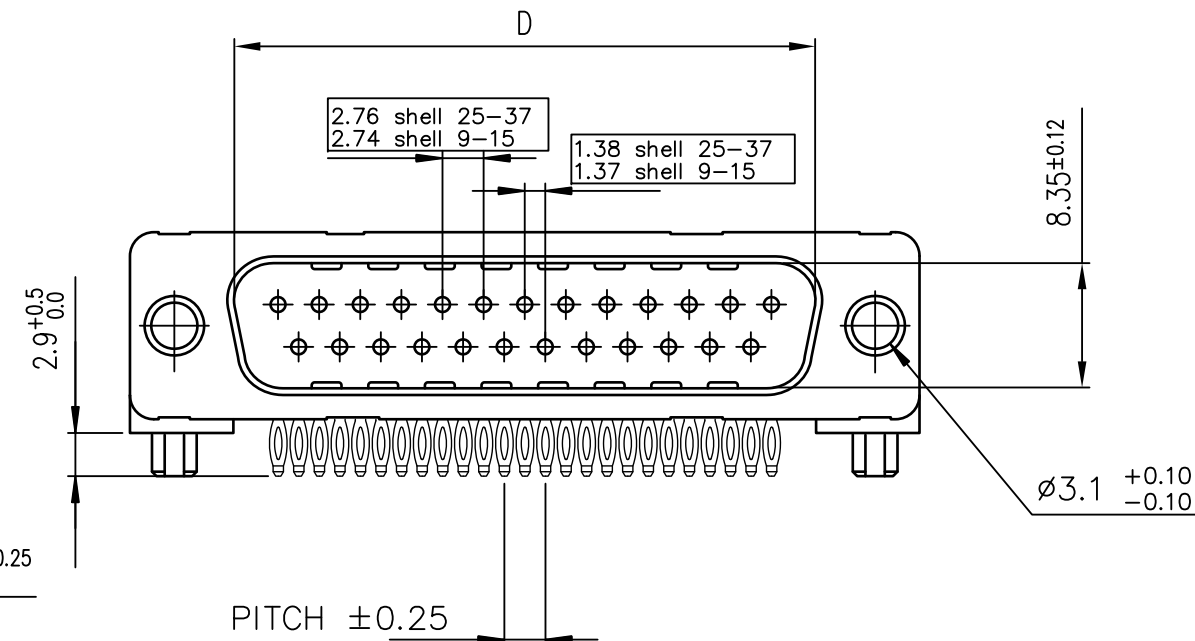
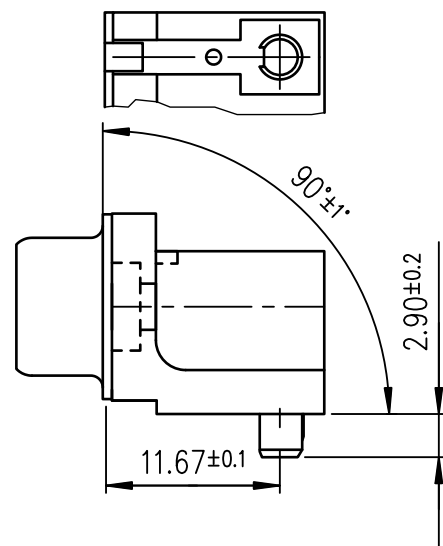
form: A3



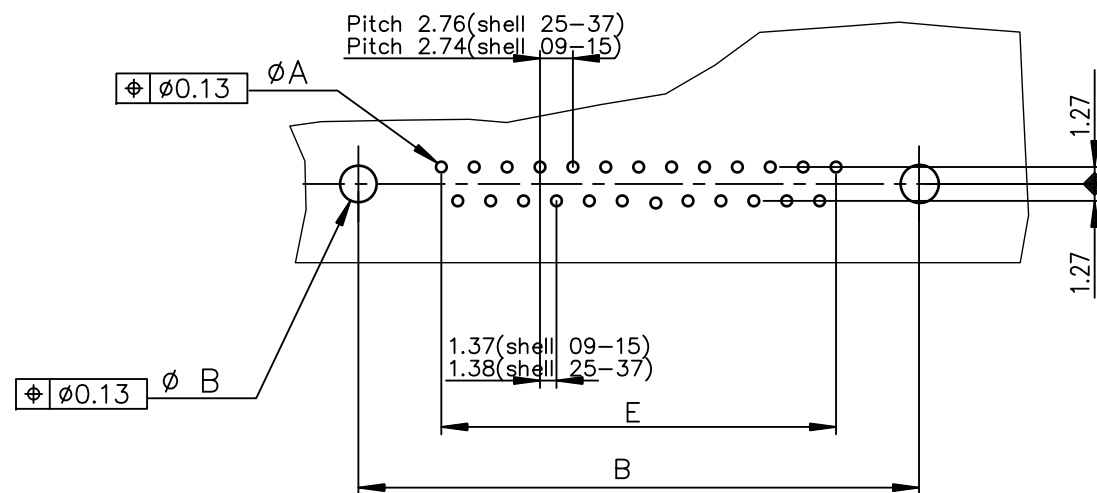
view shown without plastic pin and grounding



Detail of grounding strip



PC card drilling dimensions(after plating)
(thickness 1.60 ±0.20)



TIN LEAD PART NUMBER

SHELL	A±0.38	B±0.12	C±0.10	D +0.25 0	E±0.07	G	PART NUMBER	PART NUMBER
09	30.81	24.99	18.00	16.79	10.96	5.90 +0.15 0	D09P81C4PA00	D09P81C6PA00
15	39.14	33.32	26.32	25.12	19.18	5.90 +0.15 0	D15P81C4PA00	D15P81C6PA00
25	53.03	47.04	40.04	38.84	33.12	5.70 +0.25 0	D25P81C4PA00	D25P81C6PA00
37	69.32	63.50	56.50	55.30	49.68	5.70 +0.25 0	D37P81C4PA00	D37P81C6PA00
Gold flash							0.76 μ gold	

LEAD FREE PART NUMBER

SHELL	A±0.38	B±0.12	C±0.10	D +0.25 0	E±0.07	G	PART NUMBER	PART NUMBER
09	30.81	24.99	18.00	16.79	10.96	5.90 +0.15 0	D09P81C4PA00LF	D09P81C6PA00LF
15	39.14	33.32	26.32	25.12	19.18	5.90 +0.15 0	D15P81C4PA00LF	D15P81C6PA00LF
25	53.03	47.04	40.04	38.84	33.12	5.70 +0.25 0	D25P81C4PA00LF	D25P81C6PA00LF
37	69.32	63.50	56.50	55.30	49.68	5.70 +0.25 0	D37P81C4PA00LF	D37P81C6PA00LF
Gold flash							0.76 μ gold	

GENERAL CHARACTERISTICS AND ROHS INFORMATIONS:

SEE DRAWING C01-8646-0001

mat'l. code				surface	tolerance	projection	product family		
-				ISO 1302	ISO 406 ISO 1101		D-SUB		
ltr	ecn no	dr	date	tolerances unless otherwise specified		MM	title		
D	ELX-I-18050	MP	2014/06/23	angles	linear				
				0°±2°					
				dr	JOUBERT	1999/07/22	MALE CRS DELTA-D EUROPE RIGHT ANGLED PRESS FIT		
				engr	MITHUN PAUL	2014/06/23			
				chr	ALIAS BABU	2014/06/23			
				appd	BIJU K PAUL	2014/06/23	C01-8646-0582		
sheet	revision	D							
index	sheet	1							
							type Product Customer Drawing		
							sheet 1 of 1		
							size A3		

PDS: Rev :D

STATUS:Released

Printed: Jul 04, 2014

Mouser Electronics

Authorized Distributor

Click to View Pricing, Inventory, Delivery & Lifecycle Information:

[FCI / Amphenol:](#)

[D09P81C4PA00LF](#) [D15P81C4PA00LF](#) [D09P81C6PA00LF](#)