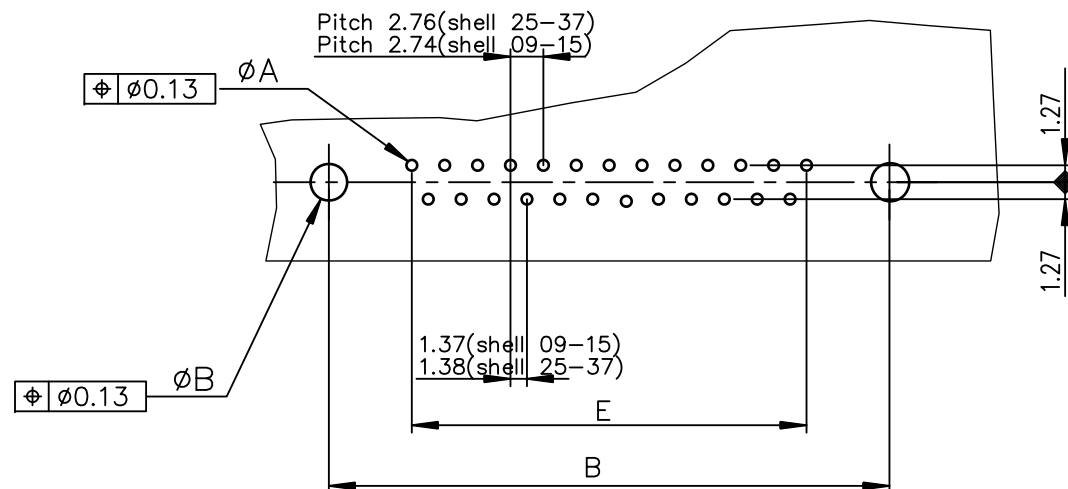




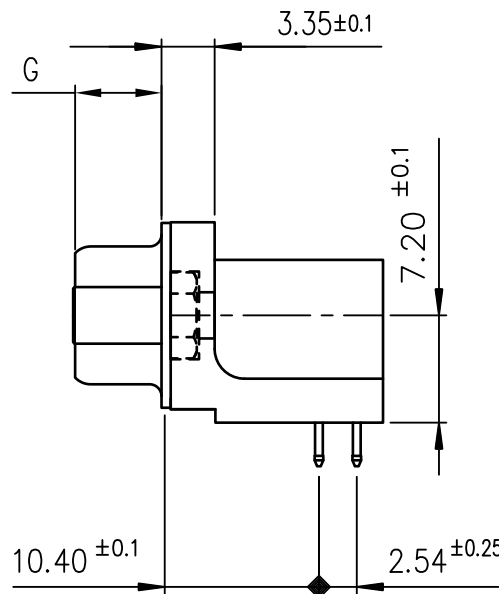
FCIconnect.com

Copyright FCI

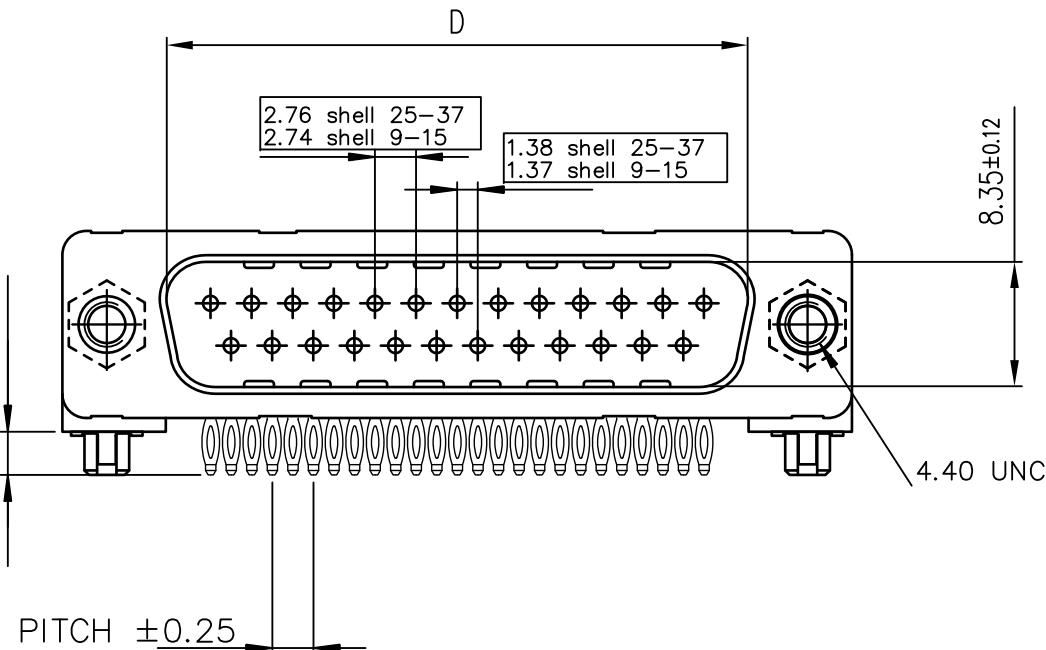
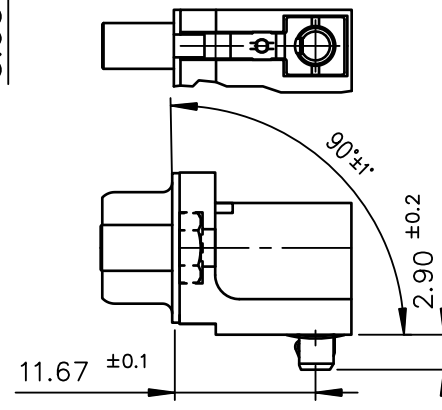
PC card drilling dimensions(after plating)  
(thickness 1.60 ±0.20 )



view shown without plastic pin and grounding



Detail of grounding strip



TIN LEAD PART NUMBER

SHELL	A±0.38	B±0.12	C±0.10	D +0.25 0	E±0.07	G	PART NUMBER	PART NUMBER
09	30.81	24.99	18.00	16.79	10.96	5.90 +0.15 0	D09P81C4GV00	D09P81C6GV00
15	39.14	33.32	26.32	25.12	19.18	5.90 +0.15 0	D15P81C4GV00	D15P81C6GV00
25	53.03	47.04	40.04	38.84	33.12	5.70 +0.25 0	D25P81C4GV00	D25P81C6GV00
37	69.32	63.50	56.50	55.30	49.68	5.70 +0.25 0	D37P81C4GV00	D37P81C6GV00
Gold flash							0.76 μ gold	

LEAD FREE PART NUMBER

SHELL	A±0.38	B±0.12	C±0.10	D +0.25 0	E±0.07	G	PART NUMBER	PART NUMBER
09	30.81	24.99	18.00	16.79	10.96	5.90 +0.15 0	D09P81C4GV00LF	D09P81C6GV00LF
15	39.14	33.32	26.32	25.12	19.18	5.90 +0.15 0	D15P81C4GV00LF	D15P81C6GV00LF
25	53.03	47.04	40.04	38.84	33.12	5.70 +0.25 0	D25P81C4GV00LF	D25P81C6GV00LF
37	69.32	63.50	56.50	55.30	49.68	5.70 +0.25 0	D37P81C4GV00LF	D37P81C6GV00LF
Gold flash							0.76 μ gold	

GENERAL CHARACTERISTICS AND ROHS INFORMATIONS:

SEE DRAWING C01-8646-0001

mat'l. code				surface	tolerance	projection	product family		
-				ISO 1302	ISO 406	ISO 1101	D-SUB		
ltr	ecn no	dr	date	tolerances unless otherwise specified			title		
H	ELX-I-18050	MP	2014/06/23	angles	linear	.0±0.1	MALE CONNECTOR DELTA-D EUROPE RIGHT ANGLED PRESS FIT		
						.00±0.1			
				0°±2°		.000±0.1			
				dr	PESSON	1997/05/15	dwg no		sheet 1 of 1
				engr	MITHUN PAUL	2014/06/23	C01-8646-0543		A3
				chr	ALIAS BABU	2014/06/23			
				appd	BIJU K PAUL	2014/06/23	type		Product Customer Drawing
sheet index	revision sheet	H	1						

# Mouser Electronics

Authorized Distributor

Click to View Pricing, Inventory, Delivery & Lifecycle Information:

[FCI / Amphenol:](#)

[D09P81C4GV00LF](#) [D09P81C6GV00LF](#) [D25P81C4GV00LF](#) [D25P81C6GV00LF](#) [D37P81C6GV00LF](#)  
[D15P81C4GV00LF](#) [D09P81C4GV00](#) [D09P81C6GV00](#) [D25P81C4GV00](#) [D25P81C6GV00](#) [D37P81C6GV00](#)  
[D15P81C6GV00LF](#)