

REFERENCE SPECIFICATIONS

-NFC 93425 (in compliance with HE 507)

PHYSICAL CHARACTERISTICS

- INSULATOR MATERIAL: THERMOPLASTIC ,UL94V0
- ACCESSORIES: BRASS
- SHELLS: STEEL

ELECTRICAL CHARACTERISTICS

- CONTACT/CONTACT : >=1000 V
- CONTACT/GROUND : >=1200 V
- INSULATION RESISTANCE: >=5000 MOhms

ENVIRONMENTAL CHARACTERISTICS

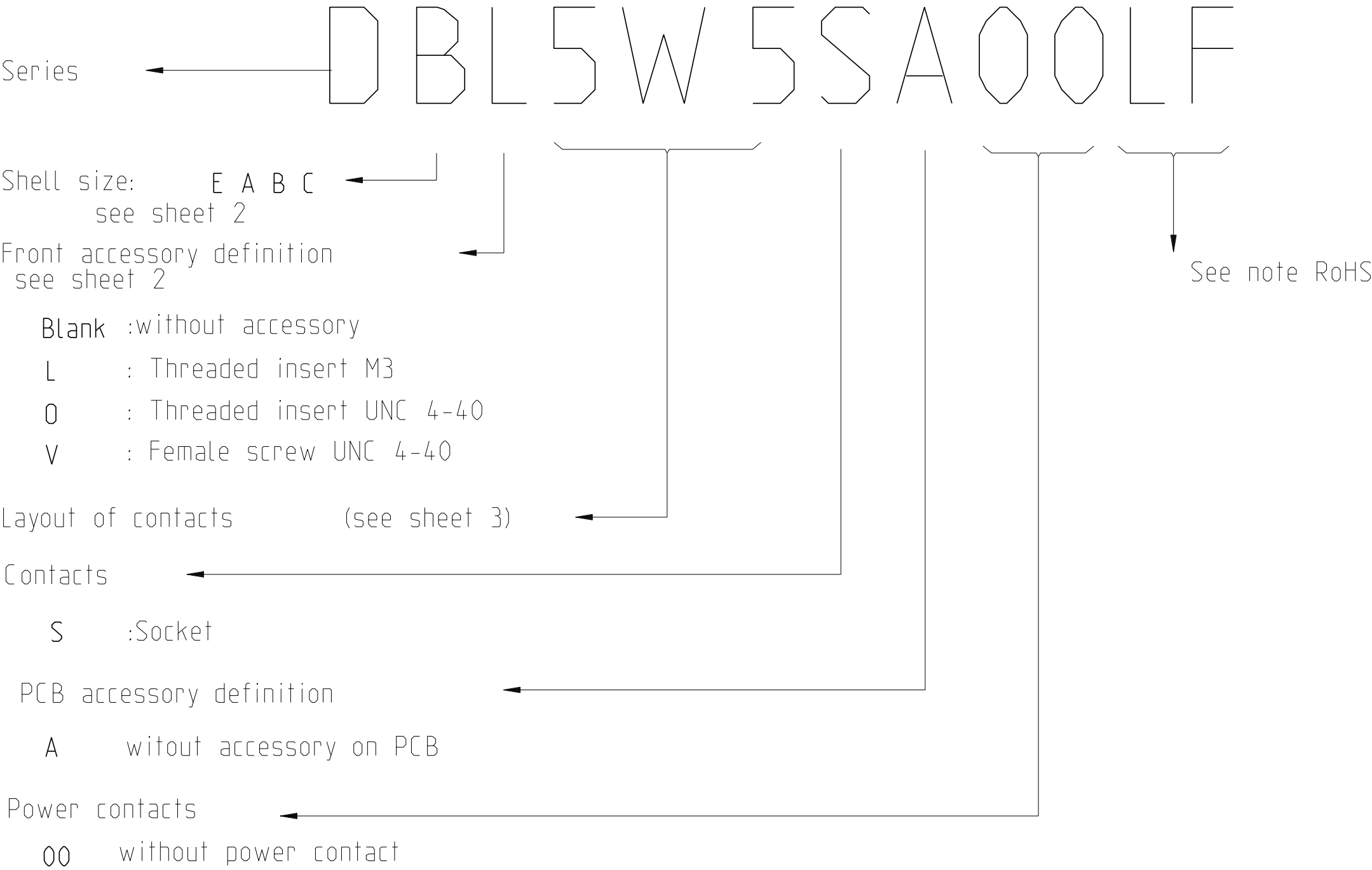
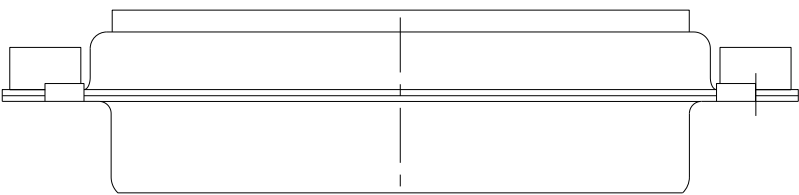
- CLIMATIC CATEGORY: 55/125/21
- TEMPERATURE RANGE -55°C TO +125°C
- DAMP HEAT STEADY STATE 21 DAYS
- SALT SPRAY 24 HOURS

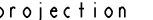


MECHANICAL CHARACTERISTICS

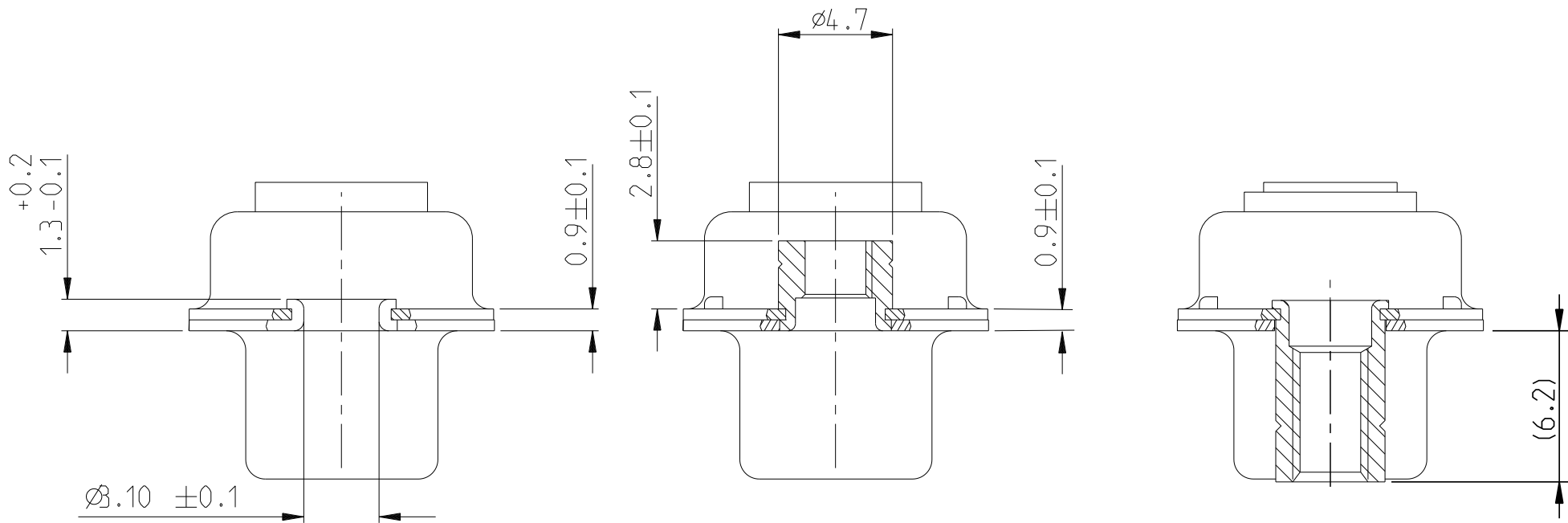
- RETENTION AGAINST TORQUE:
 - Threaded insert: 0.7 N.m minimum
 - Female screw : 0.5 N.m minimum

NOTE ROHS INFORMATION

- The “LF” products meet european union Directives and other country regulations as described in GS-22-008.
- Shell plating :2 to 4µm Cu+ Ni + 3 to 10µmm Sn(pure bright)
- Accessories: Sn pure bright + nickel
- Packaging spec: See GS-14-920



spec ref				dr	Pro Engineer 1	2015/06/16			size	scale
tolerance std	TOLERANCES UNLESS OTHERWISE SPECIFIED			eng	J Dalibard	2016/09/13			A2	2:1
				chr	J Dalibard	2016/09/19			ecn no	ECN-ELX-F-24942-1
				appr	Aymeric Soudy	2016/09/20	product family		-	rel level
surface 	linear	0.X	±0.3	Amphenol FCi	title SUB FEMALE DW full power without contact				dwg no C01-8639-2311	rev E
		0.XX	±0.10							
		0.XXX	±0.05							
		angular	0°							
				cat. no.		-	Product - Customer Drw			sheet 1 of 4



FRONT ACCESSORY	Blank without	L insert M3 O insert UNC 4.40	V Female screw UNC 4-40
PCB ACCESSORIES	A without	A without	A without

PART NUMBER	FRONT ACCESSORY	PCB ACCESSORY
D*W xSA00LF	WITHOUT	WITHOUT
D*VxW xSA00LF	Female screw UNC 4-40	WITHOUT
D*LxW xSA00LF	Insert M3	WITHOUT
D*OxW xSA00LF	Insert UNC 4-40	WITHOUT

shell size LAYOUTS

E	2V2
A	3V3
A	3W3
B	5W5
C	8W8

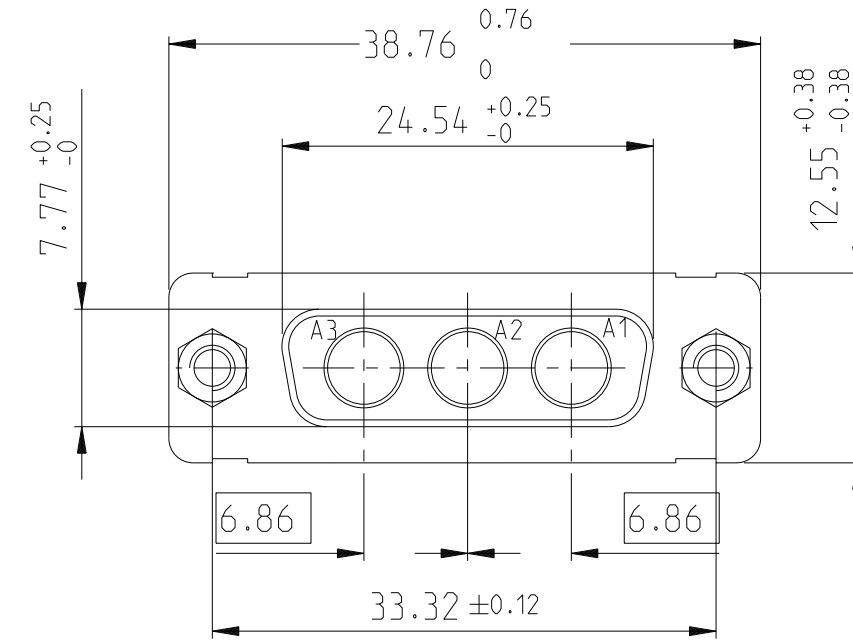
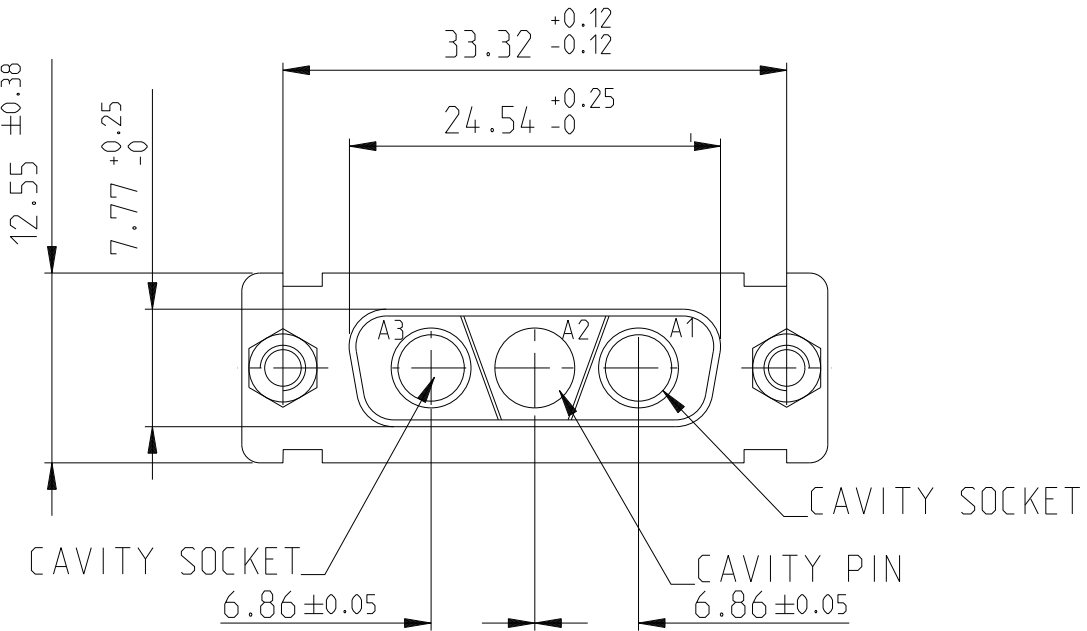
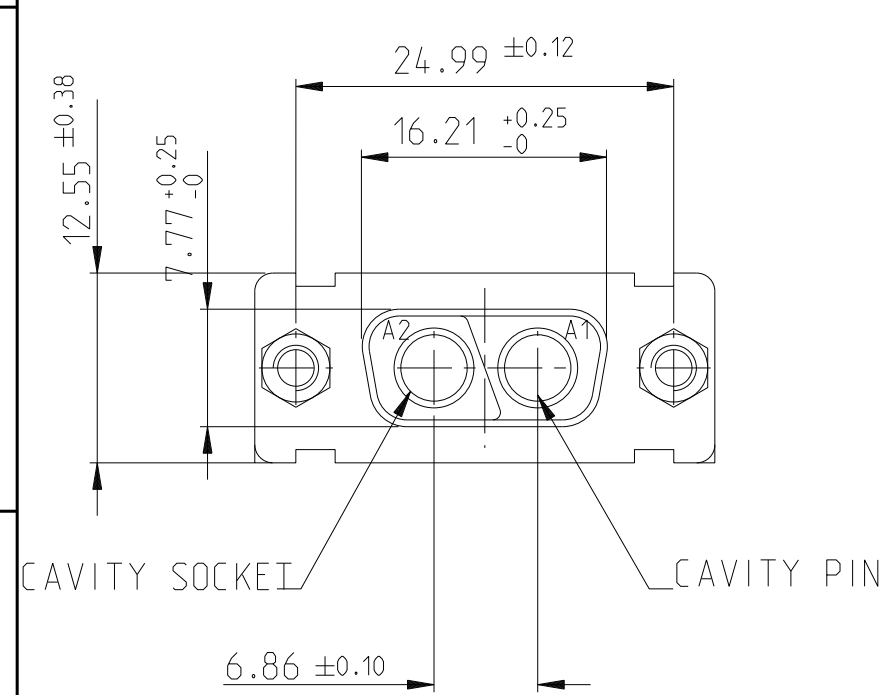
SCALE:4

spec ref		dr		Pro Engineer 1	2015/06/16			size	A2	scale	2:1	
tolerance std	TOLERANCES UNLESS OTHERWISE SPECIFIED		eng	J Dalibard	2016/09/13			ecn no	ECN-ELX-F-24942-1			
			chr	J Dalibard	2016/09/19							
		appr		Aymeric Soudy	2016/09/20	product family		-	rel level		Released	
surface	linear	0.X	±0.3	Amphenol FCI	title SUB FEMALE DW			dwg no	C01-8639-2311			rev
		0.XX	±0.10									
		0.XXX	±0.05									
		angular	0°									
				cat. no.		-	Product - Customer Drw			sheet 2 of 4		

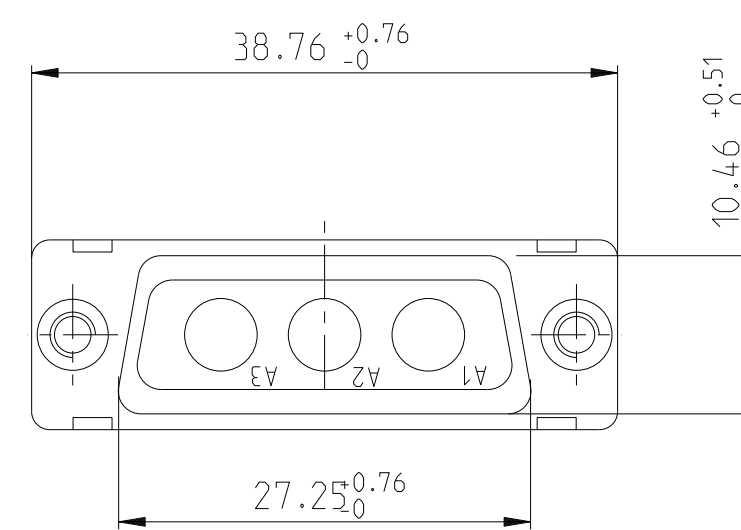
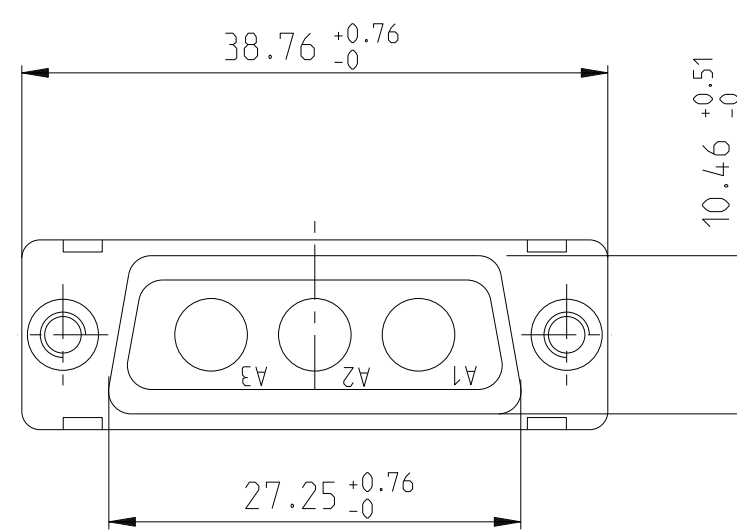
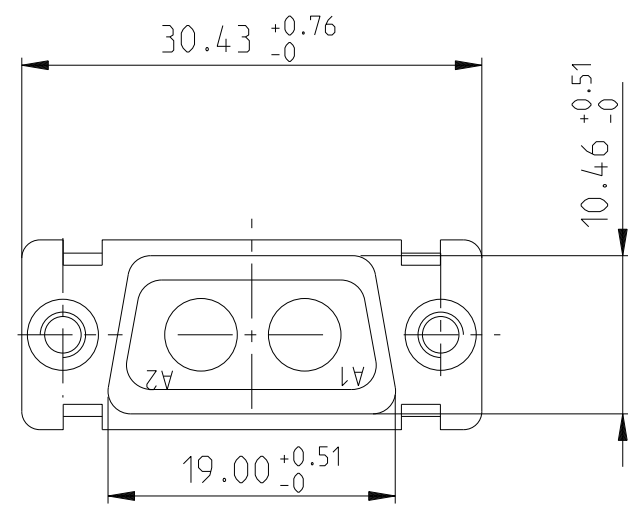
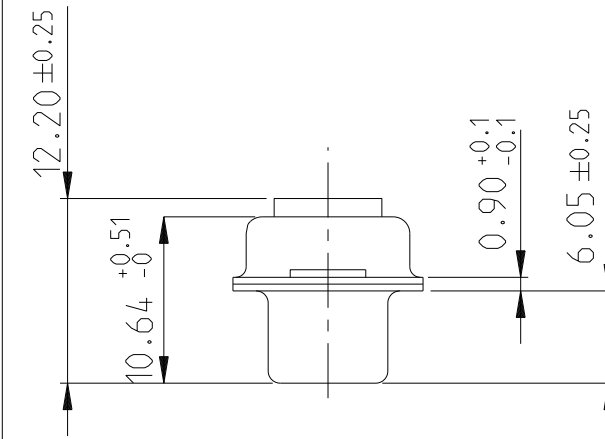
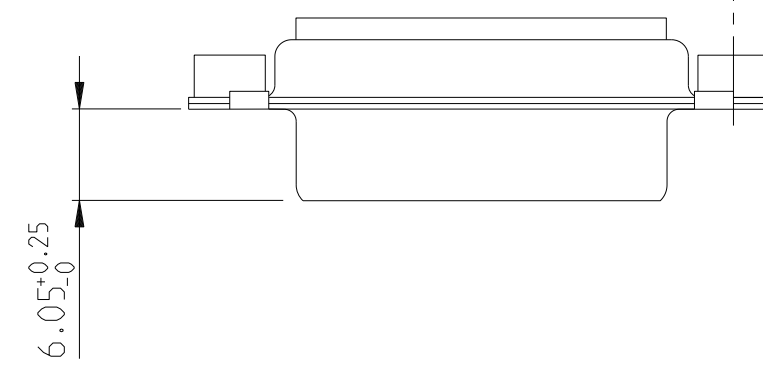
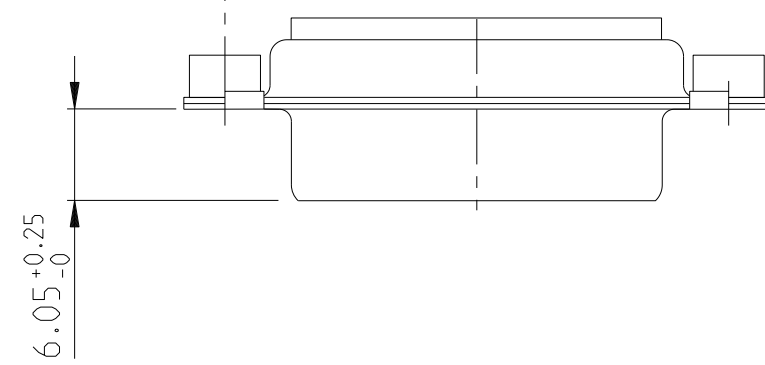
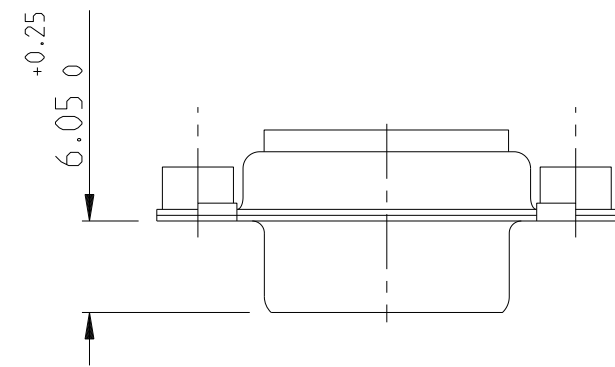
2V2




3V3

3W3

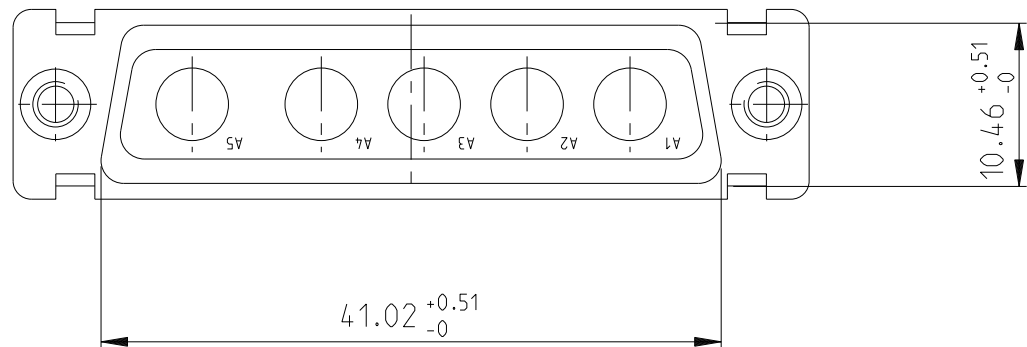
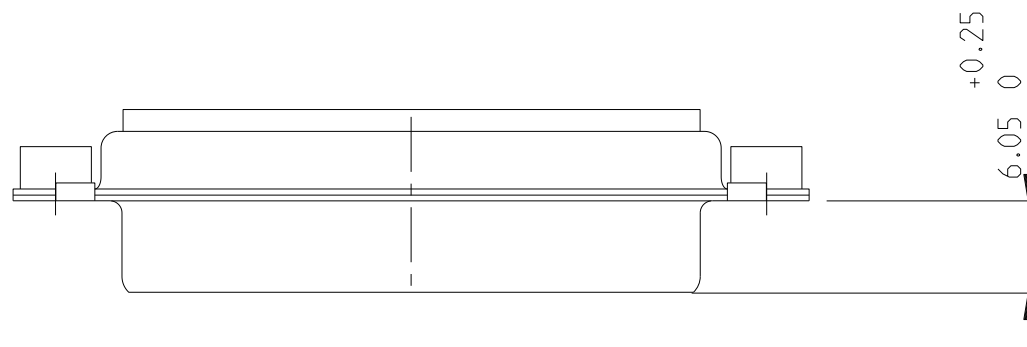
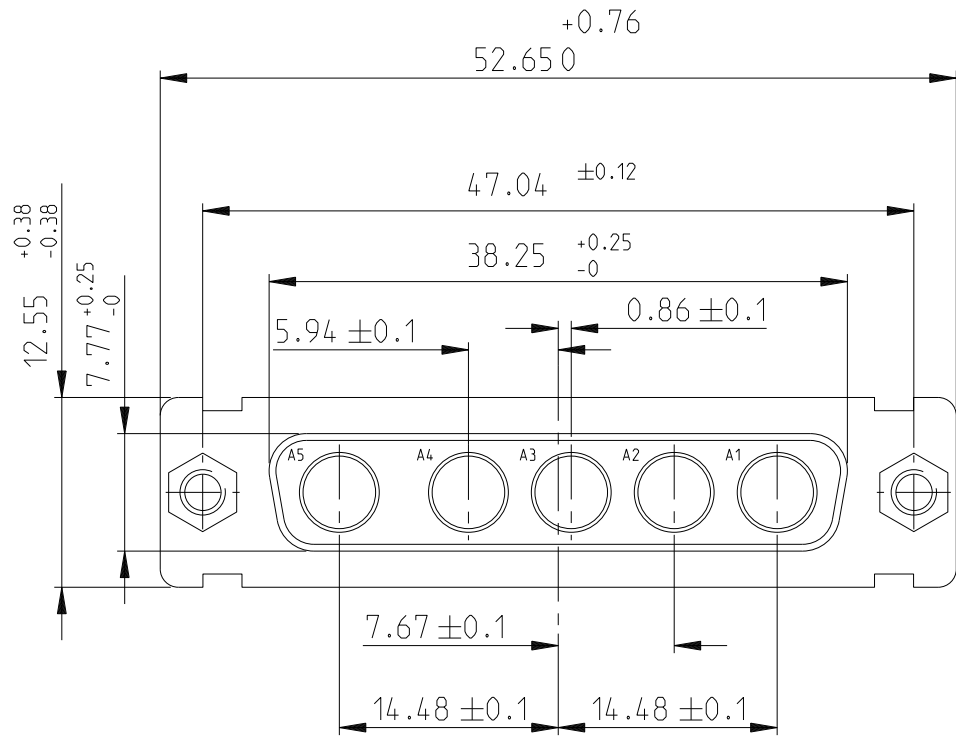


SIDE VIEW FOR
LAYOUTS: E A B C

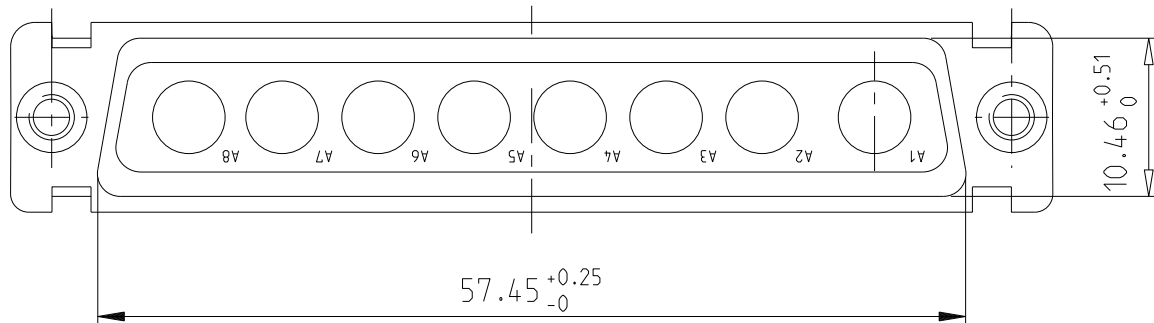
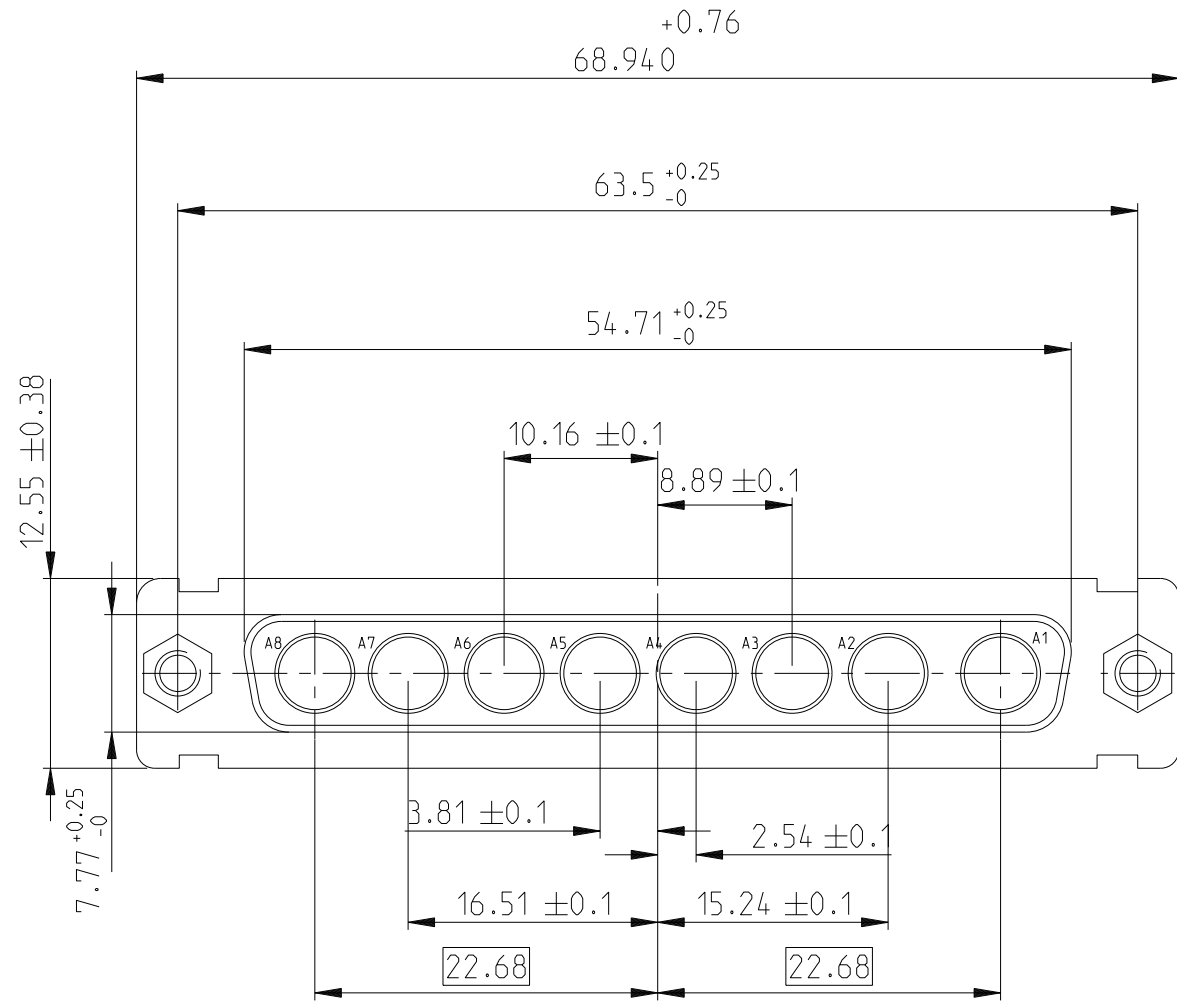




spec ref				dr		Pro Engineer 1		2015/06/16		projection		mm		size		A2		scale		2:1			
tolerance std				eng		J Dalibard		2016/09/13						ecn no		ECN-ELX-F-24942-1							
TOLERANCES UNLESS OTHERWISE SPECIFIED				chr		J Dalibard		2016/09/19						rel level		Released							
				appr		Aymeric Soudy		2016/09/20						product family		-							
surface				linear		0.X		±0.3		Amphenol FCI		title		SUB FEMALE DW		dwg no		C01-8639-2311		rev		E	
						0.XX		±0.10															
						0.XXX		±0.05															
						angular		0°															

5W 5



8W 8



spec ref				dr	Pro Engineer 1	2015/06/16			size	A2	scale	2:1	
tolerance std				eng	J Dalibard	2016/09/13			ecn no	ECN-ELX-F-24942-1			
TOLERANCES UNLESS OTHERWISE SPECIFIED				chr	J Dalibard	2016/09/19			rel level				
				appr	Aymeric Soudy	2016/09/20	product family						
<div>surface</div> <div>✓</div>	linear	0.X	±0.3	Amphenol FCI	SUB FEMALE DW				dwg no	C01-8639-2311		rev	E
		0.XX	±0.10										
		0.XXX	±0.05										
	angular	0°	±2°										

Mouser Electronics

Authorized Distributor

Click to View Pricing, Inventory, Delivery & Lifecycle Information:

[FCI / Amphenol:](#)

[DAO3W3SA00LF](#)