

REFERENCE SPECIFICATIONS

MIL-DTL-24308 FOR DIMENSIONS

NFC-93425 FOR CHARACTERISTICS

PHYSICAL CHARACTERISTICS

-INSULATOR MATERIAL: THERMOPLASTIC UL94V0

-CONTACT MATERIAL: PHOSPHOR BRONZE
GOLD OVER NICKEL

-ACCESSORIES: STEEL FOR METAL BRACKETS,
cadmium plated yellow passivation
THERMOPLASTIC UL94V0 FOR PLASTIC BRACKETS

BRASS FOR OTHERS ACCESSORIES,
cadmium plated yellow passivation

-SHELLS: STEEL,
cadmium plated yellow passivation

ELECTRICAL CHARACTERISTICS

-NOMINAL CURRENT: 7.5A

-CONTACT RESISTANCE: <=7.3 m Ohms

-CONTACT/CONTACT : >=1000 V

-CONTACT/GROUND : >=1200 V

-INSULATION RESISTANCE: >=5000 MOhms

ENVIRONMENTAL CHARACTERISTICS

- CLIMATIC CATEGORY: 55/125/56

TEMPERATURE RANGE -55°C TO +125°C

DAMP HEAT STEADY STATE 56 DAYS

SALT SPRAY 48 HOURS

MECHANICAL CHARACTERISTICS

RETENTION AGAINST TORQUE: -Threaded insert:0.7 N.m min

-Female screw:0.5 N.m min

Series

DBML25S700M

Shell size: **E A B C D**
(see sheet 3)

Front accessory definition
(see sheet 2)

Blank :without accessory
L :threaded insert M3
O :threaded insert UNC 4-40
V :female screw UNC 4-40

Layout of contacts (see sheet 3)

9,15,25,37,50

Contacts

S Socket

Termination type

7 Right angle/US foot print

Plating

00 Right angle 500 matings/unmatings

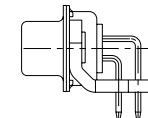
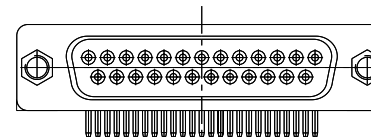
43 Right angle 500 matings/unmatings
for harsh environment

PCB accessories definition(see sheet 2)

Blank :Plastic brackets

C :Without brackets

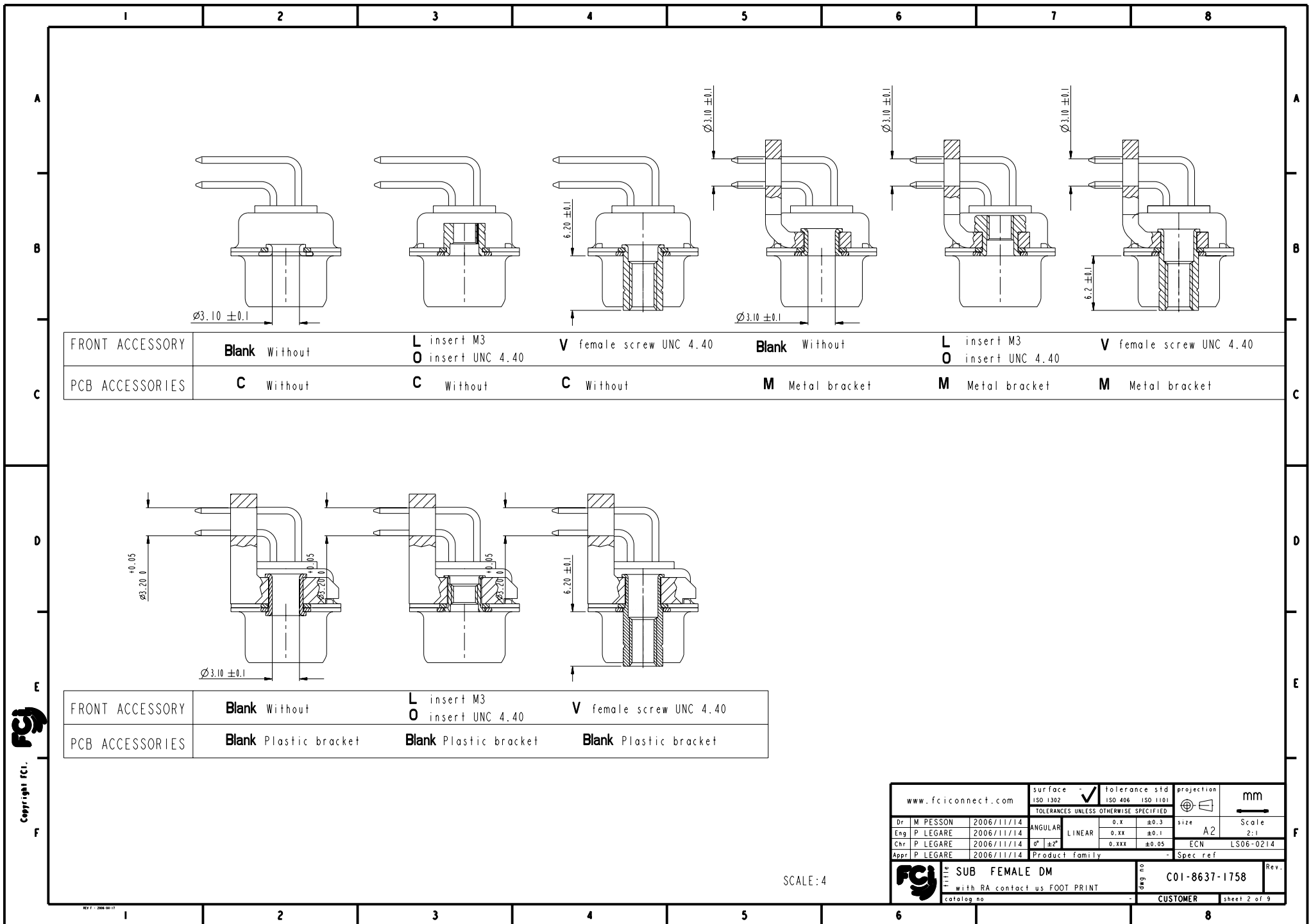
M :Metal brackets



25 WAY for Example

rev	ech no	dr	date
A	LS06-0214 MPE		2006/12/13
-	-	-	-
-	-	-	-
-	-	-	-
-	-	-	-
-	-	-	-
-	-	-	-
-	-	-	-
-	-	-	-

www.fciconnect.com		surface	-	tolerance std	ISO 1302	ISO 406	ISO 1101	projection	mm
		TOLERANCES UNLESS OTHERWISE SPECIFIED							
Dr	M PESSON	2006/11/14	ANGULAR	0.X	±0.3	size	A2	Scale	2:1
Eng	P LEGARE	2006/11/14	LINEAR	0.XX	±0.1	ECN	LS06-0214		
Chr	P LEGARE	2006/11/14	0° ±2°	0.XXX	±0.05	Spec ref			
Appr	P LEGARE	2006/11/14	Product family						
SUB FEMALE DM		deg no	C01-8637-1758		Rev.				
with RA contact us FOOT PRINT		catalog no	CUSTOMER		sheet 1 of 9				



	I	2	3	4	5	6	7	8
A								
B								
C								
D								
E								
F								

PART NUMBER	FRONT ACCESSORY	PCB ACCESSORY
D*MxxS700C	without	without
D*MLxxS700C	insert M3	without
D*MOxxS700C	insert UNC 4.40	without
D*MVxxS700C	female screw UNC 4.40	without
D*MxxS700M	without	Metal bracket
D*MLxxS700M	insert M3	Metal bracket
D*MOxxS700M	insert UNC 4.40	Metal bracket
D*MVxxS700M	female screw UNC 4.40	Metal bracket
D*MxxS700	without	Plastic bracket
D*MLxxS700	insert M3	Plastic bracket
D*MOxxS700	insert UNC 4.40	Plastic bracket
D*MVxxS700	female screw UNC 4.40	Plastic bracket

shell size	Contact number
X	XX
E	09
A	15
B	25
C	37
D	50

PART NUMBER	FRONT ACCESSORY	PCB ACCESSORY
D*MxxS743C	without	without
D*MLxxS743C	insert M3	without
D*MOxxS743C	insert UNC 4.40	without
D*MVxxS743C	female screw UNC 4.40	without
D*MxxS743M	without	Metal bracket
D*MLxxS743M	insert M3	Metal bracket
D*MOxxS743M	insert UNC 4.40	Metal bracket
D*MVxxS743M	female screw UNC 4.40	Metal bracket
D*MxxS743	without	Plastic bracket
D*MLxxS743	insert M3	Plastic bracket
D*MOxxS743	insert UNC 4.40	Plastic bracket
D*MVxxS743	female screw UNC 4.40	Plastic bracket

www.fciconnect.com

Dr M PESSON 2006/11/14

Eng P LEGARE 2006/11/14

Chr P LEGARE 2006/11/14

Appr P LEGARE 2006/11/14

surface -

ISO 1302

tolerance std

ISO 406 ISO 1101

TOLERANCES UNLESS OTHERWISE SPECIFIED

ANGULAR

0.X ±0.3

LINEAR

0.XX ±0.1

0° ±2°

0.XXX ±0.05

projection

size A2

Scale 2:1

ECN LS06-0214

Product family

Spec ref

mm

deg no

C01-8637-1758

Rev.

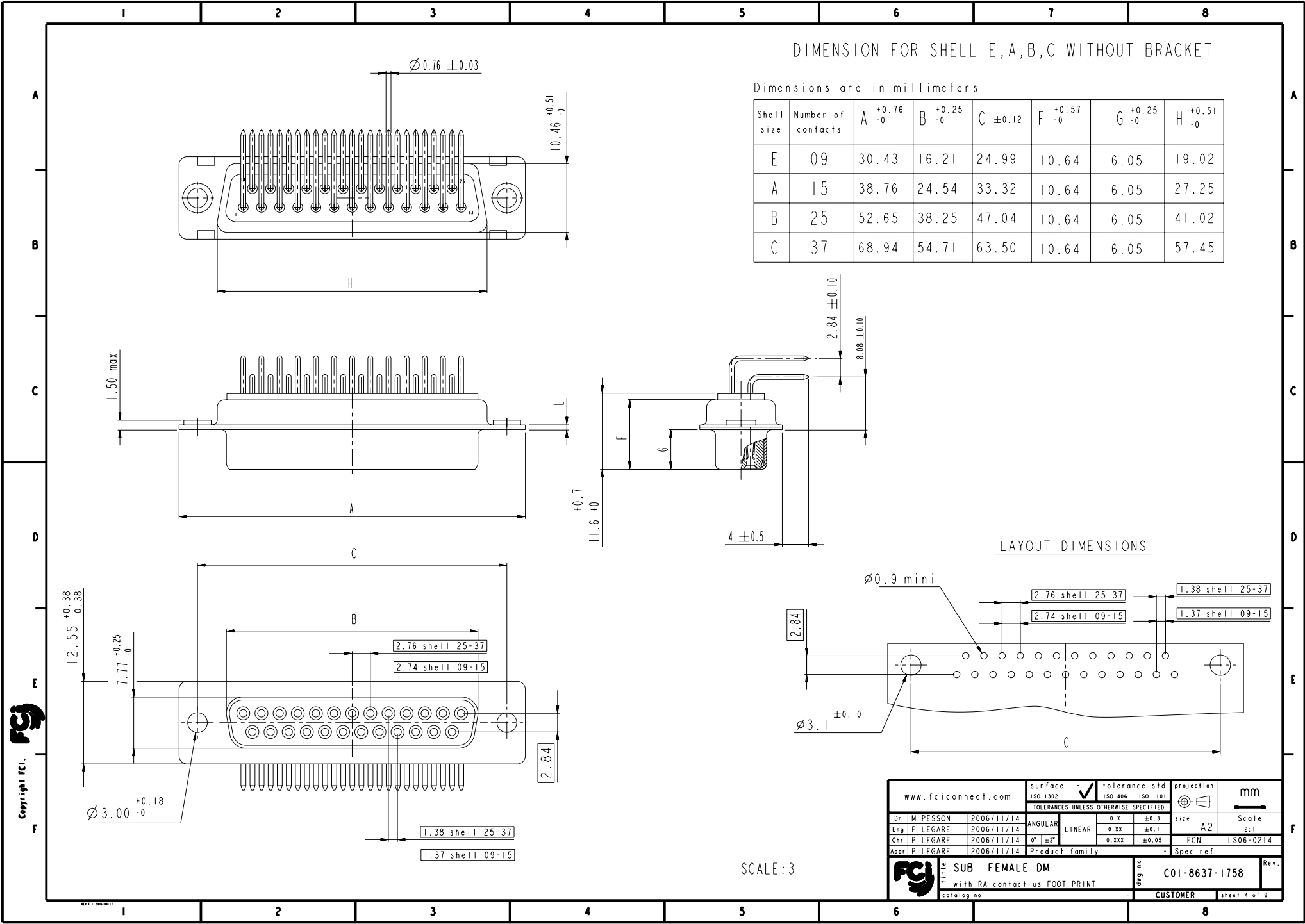
Sub FEMALE DM

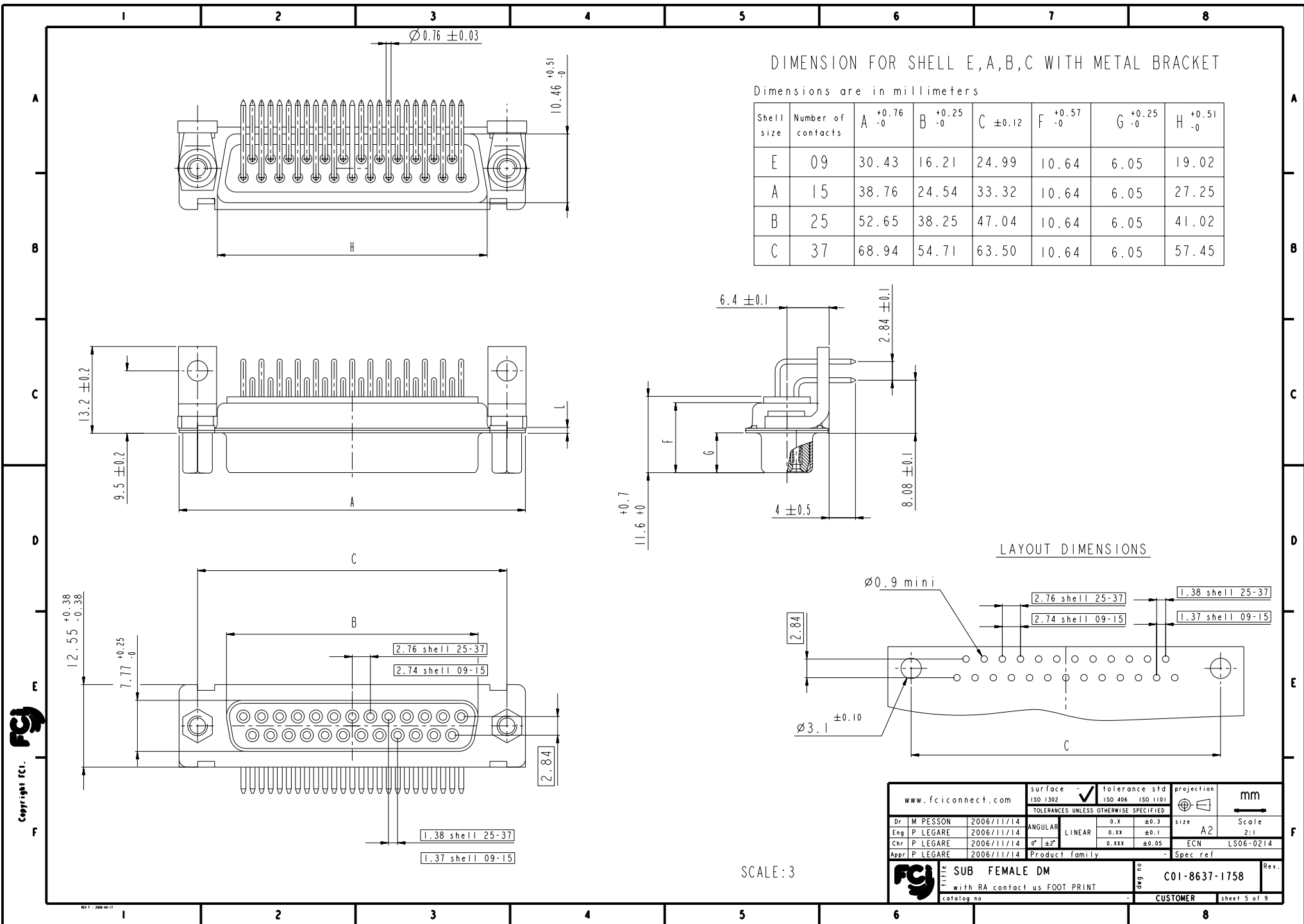
with RA contact us FOOT PRINT

catalog no

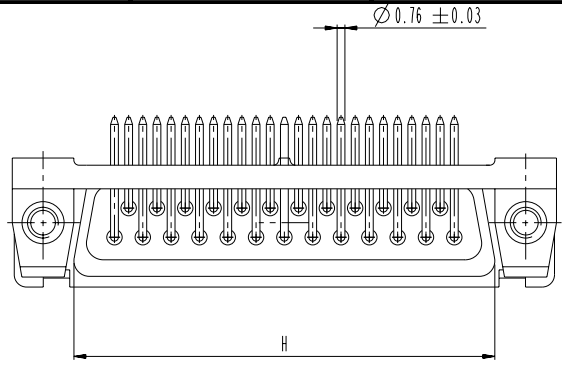
CUSTOMER

sheet 3 of 9





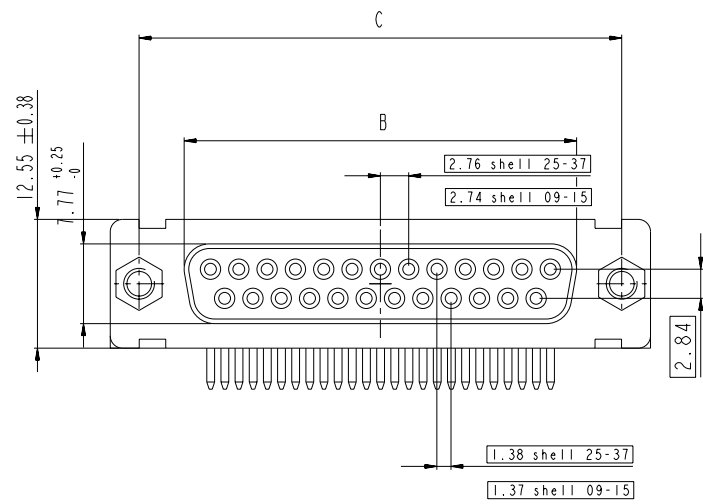
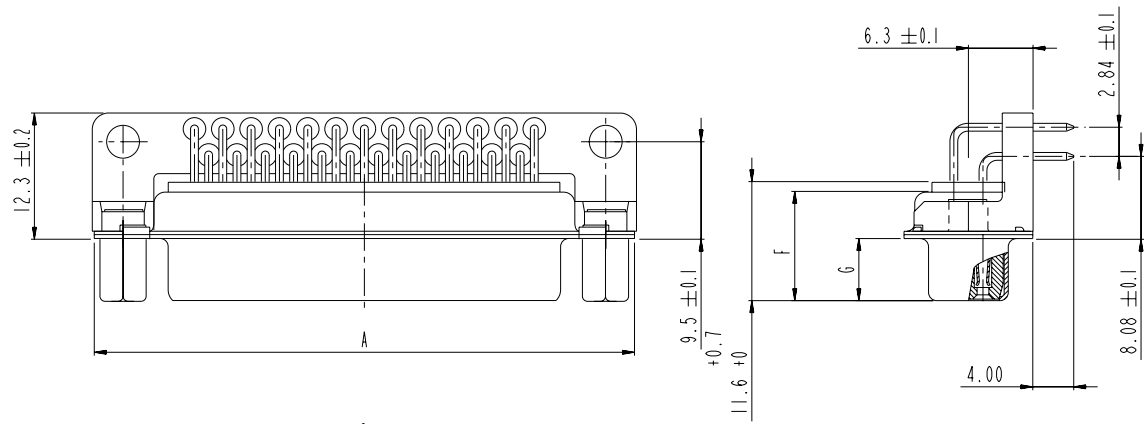
I 2 3 4 5 6 7 8



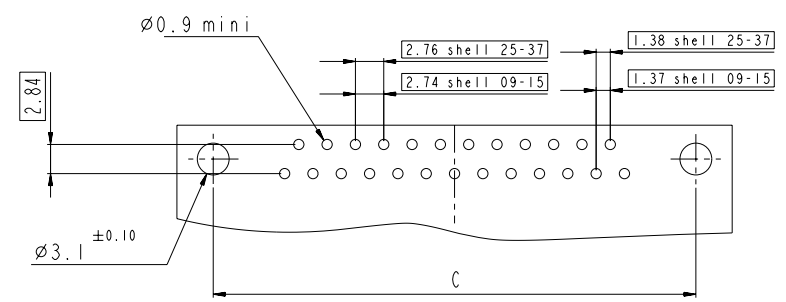
DIMENSION FOR SHELL E,A,B,C WITH PLASTIC BRACKET

Dimensions are in millimeters

Shell size	Number of contacts	A ^{+0.76 -0}	B ^{+0.25 -0}	C ±0.12	F ^{+0.57 -0}	G ^{+0.25 -0}	H ^{+0.51 -0}
E	09	30.43	16.21	24.99	10.64	6.05	19.02
A	15	38.76	24.54	33.32	10.64	6.05	27.25
B	25	52.65	38.25	47.04	10.64	6.05	41.02
C	37	68.94	54.71	63.50	10.64	6.05	57.45



LAYOUT DIMENSIONS

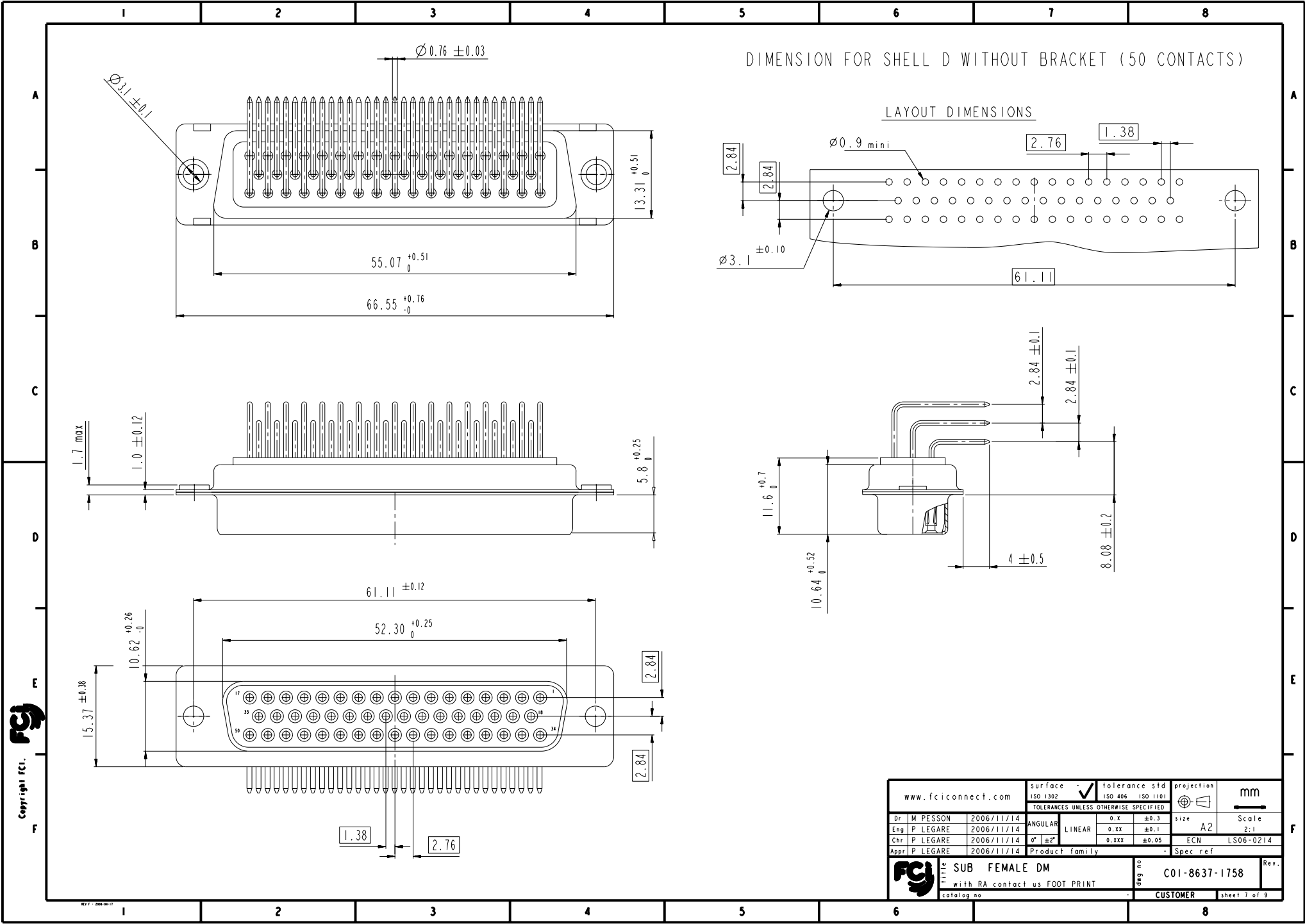


Copyright fci.

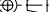

www.fciconnect.com			surface - ISO 1302		tolerance std ISO 406 ISO 1101		projection mm	
			TOLERANCES UNLESS OTHERWISE SPECIFIED					
Dr	M PESSON	2006/11/14	ANGULAR	0.X	±0.3	size	A2	Scale
Eng	P LEGARE	2006/11/14	LINEAR	0.XX	±0.1			2:1
Chr	P LEGARE	2006/11/14	0° ±2°	0.XXX	±0.05	ECN	LS06-0214	
Appr	P LEGARE	2006/11/14	Product family		-		Spec.ref	
SUB FEMALE DM			Title		deg no		Rev.	
with RA contact us FOOT PRINT			catalog no		C01-8637-1758			
			CUSTOMER		sheet 6 of 9			

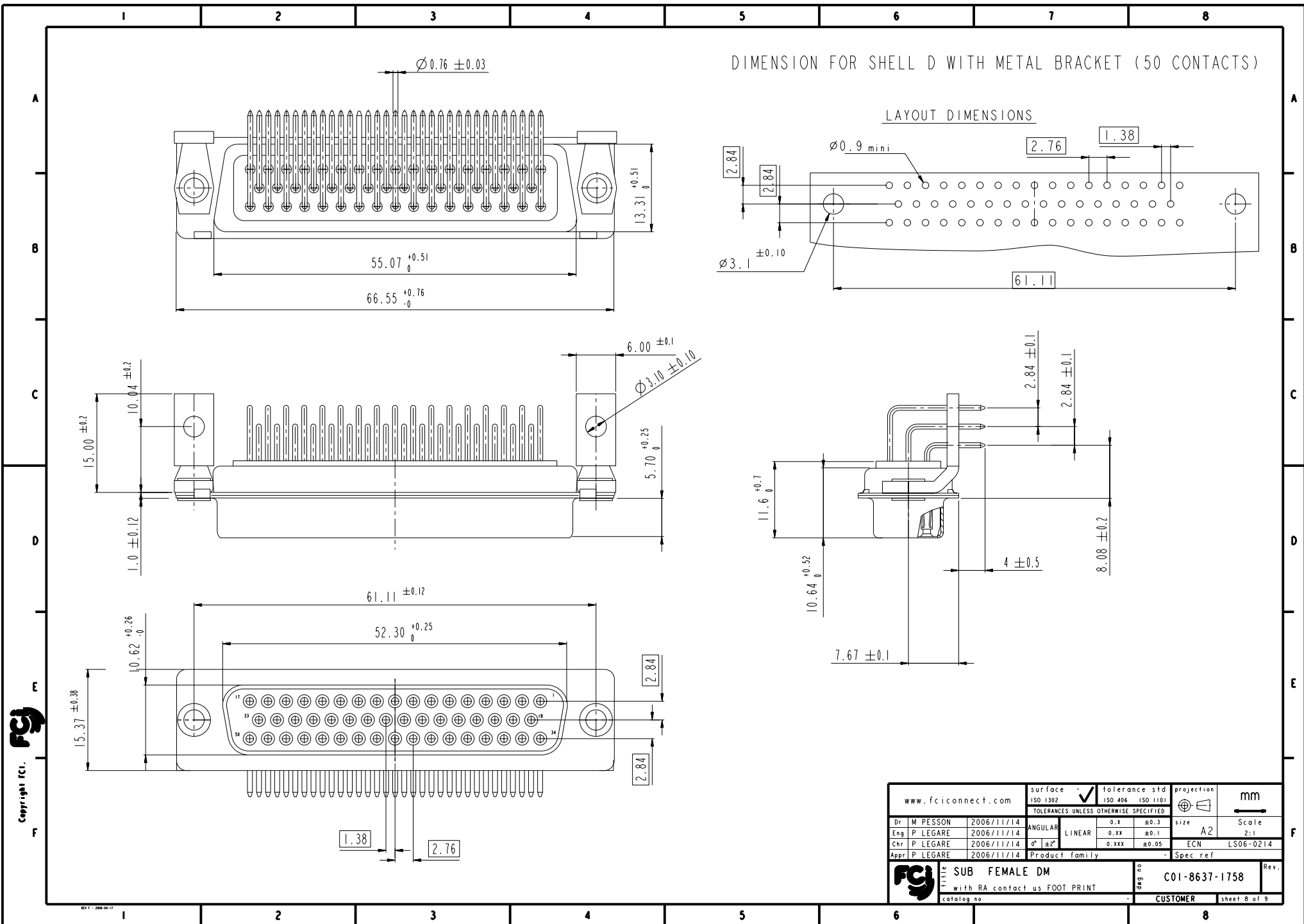
REV 7 - 2006-09-17

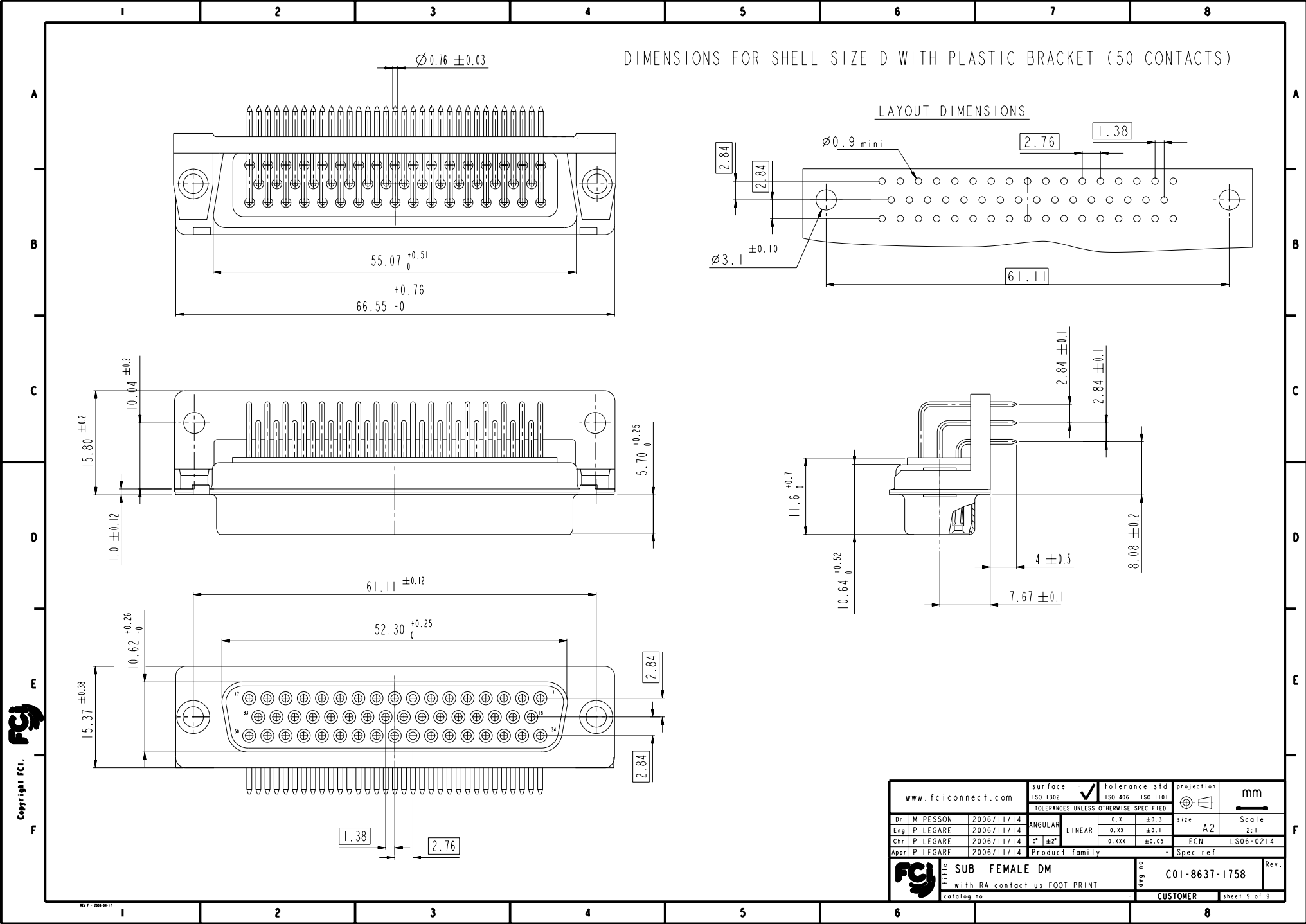
I 2 3 4 5 6 7 8



Copyright fci.




www.fciconnect.com			surface <input checked="" type="checkbox"/> tolerance std ISO 1302 ISO 406 ISO 1101		projection		mm			
			TOLERANCES UNLESS OTHERWISE SPECIFIED							
Dr	M PESSON	2006/11/14	ANGULAR	LINEAR	0.X	±0.3	size	A2		
Eng	P LEGARE	2006/11/14			0.XX	±0.1			Scale	2:1
Chr	P LEGARE	2006/11/14			0° ±2°	0.XXX				
Appr	P LEGARE	2006/11/14	Product family			ECN LS06-0214				
						Spec ref				
			SUB FEMALE DM			C01-8637-1758		Rev.		
			with RA contact us FOOT PRINT							
catalog no						CUSTOMER		Sheet 7 of 9		





DIMENSIONS FOR SHELL SIZE D WITH PLASTIC BRACKET (50 CONTACTS)

LAYOUT DIMENSIONS

www.fciconnect.com			surface - <input checked="" type="checkbox"/> tolerance std ISO 1302 ISO 406 ISO 1101		projection 		mm 	
			TOLERANCES UNLESS OTHERWISE SPECIFIED					
Dr	M PESSON	2006/11/14	ANGULAR	LINEAR	0.X	±0.3	A2	Scale 2:1
Eng	P LEGARE	2006/11/14			0.XX	±0.1		
Chr	P LEGARE	2006/11/14			0 ±2	±0.05		
Appr	P LEGARE	2006/11/14	Product family				- Spec ref	
			SUB FEMALE DM		C01-8637-1758		Rev.	
			with RA contact us FOOT PRINT					
catalog no			-		CUSTOMER		sheet 9 of 9	

Mouser Electronics

Authorized Distributor

Click to View Pricing, Inventory, Delivery & Lifecycle Information:

[FCI / Amphenol:](#)

[DAM15S743M](#) [DBM25S743M](#) [DEM09S743](#) [DEM09S743M](#)